



2025 COMPONENT SPECIFICATION CATALOG



**ARCHITECTURAL
COMMERCIAL
RESIDENTIAL
STEEL BUILDING**

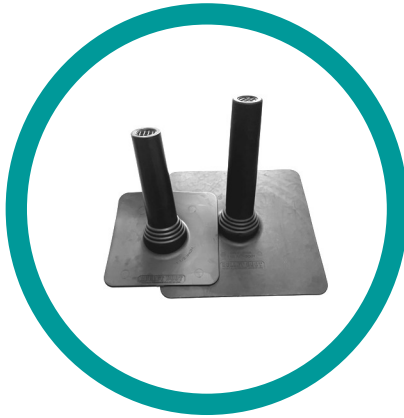
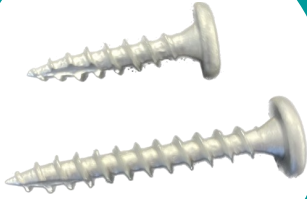


TABLE OF CONTENTS



PG 4-6



PG 7-8



PG 9



PG 10-11,19



PG 12,19



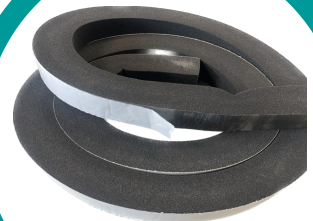
PG 13-15



PG 15-18



PG 24-27



PG 23



PG 20



PG 21-22



PG 28-30

COLORS AND COATINGS

DMG85

MIAMI-DADE COUNTY
LISTED

DMI fasteners with the DMG85 coating system have been tested to surpass testing requirements set forth in the various building codes in the Southeast. This includes resistance to salt spray and acid rain conditions. This multilayer full coating consisting of a specific mixture of a zinc galvanizing, chemical conversion film and ceramic topcoats is standard on WoodZIP FLMD, Panclip, XLP, SDL, CON*ZIP, PAN*CON, SteelZIP and many other DMI products. All DMI Miami-Dade listed fasteners have the DMG85 barrier coating system.



PowderCoat

DMI also offers powder coated head paint systems on many of the Woodzip, Steelzip, Woodzip S.C.A.M.P. and SteelZIP S.C.A.M.P fasteners. Powder coated fasteners have excellent corrosion protection on the head and washer. Powder coating does not coat the whole fastener, so DMG85 coatings or zinc platings are used to provide corrosion resistance on the shank and point portions of these fasteners. Powder coated fastener colors may vary slightly from the color chart.

Painted Rivets

Painted #43 blind rivets are available in 100 piece bags. Color chart to the right notates which colors are available. V100(high volume) R100 (regular volume)



V100	V100	V100	V100	R100
014 Bright White	001 White	348 Bone White	330 Warm White	553 Parchment
V100	R100	R100	V100	R100
422 Taupe/Clay	109 Sand Beige	415 Beige	248 Light Stone	548 Ivory
V100	V100	V100	V100	V100
020 Tan (STD)	629 Sierra Tan	110 Cocoa Brown	1280 Buckskin	537 Medium Bronze
V100	V100	V100	V100	V100
578 Old Town Gray	302 Pearl Gray	850 Ash Gray	324 Dark Bronze	042 Burnished Slate
V100	V100	V100	V100	V100
696 Pewter Gray	091 Zinc Gray	051 Charcoal Gray	416 Slate Gray	1111 Mansard Brown
R100	R100	V100	V100	V100
930 Aged Copper	047 Colony Green	660 Hemlock	232 Evergreen	508 Patina Green
V100	V100	R100	R100	R100
928 Terracotta	102 Crimson Red	798 Hartford/Fern	925 ClassicGreen	228 Forest Green
R100	V100	V100	R100	V100
890 Red (STD)	691 Barn Red	074 Colonial Red	393 Burgundy	432 Blue Teal
V100	V100	V100	V100	V100
023 Gloss Black	507 Matte Black	421 Navy	843 Gallery Blue	012 Caribbean Blue
Metallics	V100	R100	R100	V100
Metallc Paints >	1161 Silver	1160 Champagne	1162 Zactique	1116 Copper Penny

The color chart is representative of our standard color offerings. Colors may vary from actual product due to color variations in the catalog printing process. Actual colored product samples are available on request.

Contact a distributor for pricing and availability

Specification pages available at www.directmetalsinc.com

PANCLIP - for applications that require a low profile head with large flat under head load bearing surface. The Panclip head combines a larger clamping surface than a PFH fastener and a lower profile than a HWH or hex head fastener. Designed primarily for the installation of standing seam metal roofing panel clips. The Panclip has many other applications such as window, door, fixture, liner panel, cladding and siding panel installations. Panclip fasteners are now available for wood (MTW), steel (MTM) or wood to metal (WTM) applications.

#10 PANCLIP MTW 1000 HR MIAMI-DADE

DMI's "standard" fastener for low profile fastening applications to wood substrates. This engineered multi-purpose fastener is a carbon steel fastener with E zinc galvanizing and DMG85 corrosion resistant coating. This fastener meets exceeds the ASTM G85 Miami-Dade corrosion resistance requirement and the Silver parts have a Miami-Dade fastener listing L 21-0630.02. This fastener also meets the Florida Building Code, 2017 FBC R904.5.2, 2014 1505.5 1000 hr ASTM B-1117 requirements. The #10-9 thread pattern performs well in plywood and OSB substrates. All Panclip MTW screws feature #2 square drive and a TP-17 point and are packaged 250 pcs per bag.

Product Selection

Silver DMG85 Coated Miami Dade L21-0630.02

Available Sizes	Qty/Box	Part#
#10 x 1"	TP17 5,000	DMIPD10100T **
#10 x 1-1/2"	TP17 2,500	DMIPD10150T **
#10 x 2"	TP17 2,000	DMIPD10200T **
#10 x 2-1/2"	TP17 2,000	DMIPD10250T **

White DMG85 Coated

Available Sizes	Qty/Box	Part# 1000hr
#10 x 2"	TP17 2,000	DMIPD10200WT *
#10 x 3"	TP17 1,500	DMIPD10300WT *

304 Stainless Steel with Silver DMG85
Miami-Dade L20-0309.02

Available Sizes	Qty/Box	Part#
#10 x 1"	TP17 5,000	DMIP31010D ***
#10 x 1-1/2"	TP17 2,500	DMIP31015D ***
#10 x 2"	TP17 2,000	DMIP31020D ***
#10 x 2-1/2"	TP17 1,500	DMIP31025D ***

316 Stainless Steel Passivated Uncoated

Available Sizes	Qty/Box	Part#
#10 x 1-1/2"	TP17 2,500	DMIP3161015D *

Description

Drive: SQ2
Material: C1022, 304SS, 316SS
Point: TP-17
Finish: DMG85 Silver
Substrate/Use: Wood
Thread: 9 TPI
Thread Diameter: Maj: .185" Min .201"
Head Height .060" - .07"
Head Diameter: .435" - .472"
Country of Origin: Taiwan

Performance Specifications

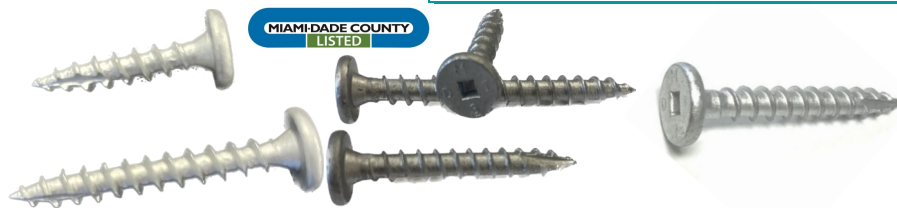
Torsional: 66 in-lbs
Tensile: 1,981 lbs. min.
Shear: 1,428 lbs min.
Pull out / Withdrawal Values:
S. Yellow Pine 944 lbs ult
3/4" PLY 665 lbs ult
1/2" PLY 387 lbs ult
7/16" OSB 192 lbs ult

Corrosion Resistance

TAS114 Appendix E G85 Annex A5:1000 Hour, ASTM B117 1000 Hour.

Code Compliance

*Florida Building Code Compliant 1506.6
**Miami-Dade County # L21-0630.02
***Miami-Dade County # L20-0309.02



PANCLIP SP MTW - 1000 HR COATED

Panclip fastener designed for clip installation into dimensional lumber wood substrates. Full Silver DMG85 coating and sharp point. Meets FBC 1506.6 and Miami Dade requirements. Available in older 11 TPI and 13 TPI design thread patterns specified in some approved systems more specifically suitable for dimensional lumber substrates. Packaged 250 pcs / bag

Product Selection

Blue DMG85 Coated Miami Dade L21-0630.01

Available Sizes	Qty/Box	Part#
#10-13 x 1-1/4" S2	3,500	DMIPDX10114BA **

Silver DMG85 Coated Miami Dade L21-0630.05

Available Sizes	Qty/Box	Part#
#12-11 x 3/4" S2	5,000	DMIPD1203411T ***
#12-11 x 1" P2/S2	5,000	DMIPD121011T ***
#12-11 x 2" S2	2,000	DMIPD122011T ***

304 Stainless Steel Silver DMG85 Coated

Available Sizes	Qty/Box	Part#
#12-11 x 3/4" A	5,000	DMIP31234D *
#14-14 x 3/4" AB	4,000	DMIP31434SDCAB*
#14-14 x 1" AB	3,000	DMIP31410SDCAB*

Corrosion Resistance

TAS114 Appendix E G85 Annex A5:1000 Hour, ASTM B117 1000 Hour.

Code Compliance

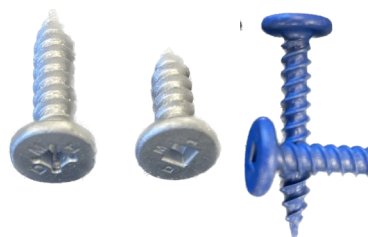
*Florida Building Code Compliant 1506.6
**Miami-Dade County # L21-0630.01
***Miami-Dade County # L21-0630.05

Description

Drive: SQ2
Material: C1022, 304SS
Point: Sharp
Finish: DMG85 Silver or Blue
Substrate/Use: Wood
Thread TPI: #10-13, #12-11, #14-14
Thread Diameter: #10 Maj: .185" Min .132"
Thread Diameter: #12 Maj: .220" Min .156"
Head Height .070" - .080"
Head Diameter: .435" - .472"
Country of Origin: Taiwan

Performance Specifications

Torsional: #10: 81 lbs, #12: 132 lbs
Tensile: #10: 1,981 lbs., #12: 2102 lbs.
Shear: #10: 1,428 lbs, #12: 1994 lbs.
Pull out / Withdrawal Values: lbs Ultimate
SYP 2X #10: 989, #12: 622 lbs.
3/4" PLY #10: 553, #12: 427 lbs.
1/2" PLY #10: 341 lbs, #12: 377 lbs.
7/16" OSB #10: 157 lbs, #12: 326 lbs.
3/4" OSB



PANCLIP XLP WAFER HEAD FASTENER

With extra low profile pancake wafer head for installing nail strip style standing seam panels into wood substrates. XLP MTW comes standard with DMG85 Silver corrosion resistant coating designed to exceed Florida Building Code and Miami-Dade County requirements. The XLP's larger #12-8 diameter provides superior holding strength vs. competing #10 fasteners into wood substrates. The XLP has a sharp point and #2 Square drive for ease of installation.

The #12-8 and #10-13 are available in both coated carbon steel and coated 304 stainless steel. A most economical Zinc plated only option was added for 2025 for use outside of code restricted areas, offering a PH2/SQ Drive. All XLP fasteners are packaged 250 pieces per bag.

Product Selection

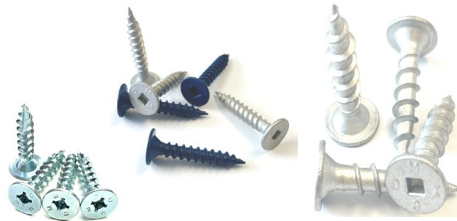
Silver DMG85 Coated Miami Dade L21-0630.04			
Available Sizes	Qty/Box	Part#	
#12 x 1"	SQ2 5,000	DMIPXLP121SD **	
#12 x 1-1/2"	SQ2 2,500	DMIPXLP1215SD **	
#12 x 2-1/2"	SQ2 1,500	DMIPXLP1225SD **	

304 Stainless Steel Silver DMG85 Coated			
Available Sizes	Qty/Box	Part#	
#12 x 1"	SQ2 5,000	DMIPXLP121SS **	
#12 x 1-1/2"	SQ2 2,500	DMIPXLP1215SS **	
#12 x 2-1/2"	SQ2 1,500	DMIPXLP1225SS **	

Blue DMG85 Coated			
Available Sizes	Qty/Box	Part#	
#10-13 x 1-1/8"	3,500	DMIPEX10118BA *	
#10-13 x 2"	2,000	DMIPEX10200BA *	

304 Stainless Steel Silver DMG85 Coated			
Available Sizes	Qty/Box	Part#	
#10-13 x 1-1/8"	3,500	DMIPEX10118SS *	

Econo Zinc Plated Only, PH2/SQ2,			
Available Sizes	Qty/Box	Part#	
#10-8 x 1"	5,000	DMIPEX10100CH	
#10-9 x 1"	5,000	DMIPE1010ZTSPC	



Description

Drive: SQ2
Material: C1022, 304SS
Point: Sharp Point, TP-17
Finish: DMG85 Silver, Zinc Plated
Substrate/Use: Wood
Thread: #10-8, #10-9, #10-13, #12-8
#10-8 Thread Diameter: Maj: .202" Min .132"
#10-13 Thread Diameter: Maj: .194" Min .136"
#12-8 Thread Diameter: Maj: .217" Min .148"

Head Height .038" - .042"
Head Diameter: .428" - .445"
Country of Origin: Taiwan

Performance Specifications

	#10-13	#12-8
Torsional:	60 in-lbs	60 in-lbs
Tensile:	1,981 lbs.	2,000 lbs
Shear:	1,326 lbs.	1,860 lbs
Pull out / Withdrawal Values: lbs ultimate		
3/4" PLY		587 lbs
5/8" PLY		446 lbs
1/2" PLY	380 lbs	395 lbs
23/32 OSB		520 lbs
7/16" OSB	171 lbs	

Corrosion Resistance

TAS114 Appendix E G85 Annex A5:1000
Hour, ASTM B117 1000 Hour.

Code Compliance

*Florida Building Code Compliant 1506.6
**Miami-Dade County # L21-0630.04

PANCLIP-SD-L LONG LENGTH PANCAKE HEAD

#14-13 fastener low profile head fastener designed for applications that require a high strength fastener available in long lengths. Popular for many applications: Panel clip/ Commercial Roofing Stress Plate/Plywood/ Nailboard/ commercial/ Fixture attachment and more...

The multi-purpose nature of the Panclip SDL allows it to be installed into wood, light gauge metal up to 16ga and masonry/ concrete substrates with a 3/16" pre-drill.

Available in Steel or 410 Stainless Steel variants, both with the DMG85 ceramic barrier coating for optimum corrosion and dissimilar metal reaction resistance.

Product Selection

Black DMG85 Coated Miami Dade L21-0630.02			
Available Sizes	Qty/Box	Part#	
#14 x 1-1/2"	2,500	DMIPL1415D **	
#14 x 1-1/2"	100/2,400	DMIPL1415D100 **	
#14 x 2"	100/2,400	DMIPL1420D100 **	
#14 x 3"	1,000	DMIPL1430D *	
#14 x 3"	100/1,600	DMIPL1430D100 *	
#14 x 4"	1,000 B	DMIPL1440D *	
#14 x 4"	100/1,600	DMIPL1440D100 *	
#14 x 5"	1,000 B	DMIPL1450D *	
#14 x 5"	100/1,200	DMIPL1450D100 *	
#14 x 6"	1,000 B	DMIPL1460D *	
#14 x 6"	100/1,200	DMIPL1460D100 *	
#14 x 7"	500 B	DMIPL1470D *	
#14 x 8"	500 B	DMIPL1480D *	
#14 x 10"	100/300	DMIPL14100D100 *	

410 Stainless Steel Silver DMG85 Coated			
Available Sizes	Qty/Box	Part#	
#14 x 1-1/2"	2,500	DMIP41415D *	
#14 x 3"	1,000	DMIP41430D *	
#14 x 5"	500	DMIP41450D *	
#14 x 7"	500	DMIP41470D *	
#14 x 10"	500	DMIP414100D *	



Description

Drive: SQ2
Material: C1022, 410SS
Point: SD1
Finish: DMG85 Black or Silver(SS)
Substrate/Use: Wood, Metal Deck, Concrete
Metal Substrate 22 ga up to 16ga
Thread: 13 TPI, Buttress
Thread Diameter: Maj: .238" Min: .166"
Head Height .060" - .07"
Head Diameter: .49" - .51"
Country of Origin: Taiwan

Performance Specifications

Torsional: 110 in-lbs

Pull out / Withdrawal Values:	
3/4" PLY	630 lbs ult
1/2" PLY	423 lbs ult
7/16" OSB	333 lbs ult
22 ga Steel 102ksi	575 lbs ult
22 ga Steel 80ksi	456 lbs ult
16 ga Steel	1,103 lbs ult
4000 PSI Concrete	675 lbs ult
CMU Block	432 lbs ult

Corrosion Resistance

TAS114 Appendix E G85 Annex A5:1000
Hour, ASTM B117 1000 Hour.

Code Compliance

*Florida Building Code Compliant 1506.6
**Miami-Dade County # L21-0630.03

PANCLIP-SD for applications to that require a low profile head with large flat under head load bearing surface. The Panclip head combines a larger clamping surface than a PFH fastener and a lower profile than a HWH or hex head fastener. Designed primarily for the installation of standing seam metal roofing panel clips and commercial roofing stress and seam plates. The Panclip also has many other applications such as window, door, fixture, liner panel, cladding and siding panel installations.

PANCLIP-SD SELF DRILLING MTM

Panclip low profile pancake head mated to a self drilling drill point for drill and tap performance into metal and steel substrates. PANCLIP-SD features the 1000hr DMG85 ceramic coating over both the zinc plated C1022 and 410 Stainless Steel parts. This barrier coating provides resistance to corrosion and dissimilar metal reactions. DMI headmarkings signify C1022 DMG85 fasteners while a DMI4 head marking signifies 410 Stainless steel with the DMG85 Coating. Most sizes come bulk in the box.



Product Selection

Silver DMG85 Coated, S2 SD2, S2 SD3, S3 SD3			
Available Sizes	Qty/Box	Part#	1000hr
#10-16 x 1" SD2	5,000	DMIPD210100C *	
#10-16 x 1-1/2" SD2	2,500	DMIPD210150C *	
#12-14 x 1" SD3	5,000	DMIPD312100C *	
#12-14 x 2" SD3	2,000	DMIPD312200C *	
1/4-14 x 1-1/4" SD3	3,500	DMIPD314125C *	
1/4-14 x 2" SD3	2,000	DMIPD314200C *	
1/4-14 x 4" SD3	1,000	DMIPD314400C *	
1/4-14 x 6" SD3	500	DMIPD314600C *	
1/4-14 x 8" SD3	500	DMIPD314800C *	
1/4-14 x 10" SD3	500	DMIPD3141000C *	

Silver DMG85 Coated, SQ3, SD4			
Available Sizes	Qty/Box	Part#	1000hr
1/4-20 x 1-1/2" SD4	2,500	DMIP514150TC *	
1/4-20 x 3" SD4	1,500	DMIP514300TC *	
1/4-20 x 5" SD4	1,000	DMIP514500TC *	
1/4-20 x 7" SD4	500	DMIP514700TC *	

410 Stainless Silver DMG85 Coated S2 SD3			
Miami-Dade Listing # L 20-0309.01			
MDC Listed Sizes	Qty/Box	Part#	
#10-16 x 3/4" SD3	5,000	DMIP41075DC **	
#10-16 x 1" SD3	5,000	DMIP41010DC **	
#10-16 x 1-1/2" SD3	2,500	DMIP41015DC **	

410 Stainless Silver DMG85 Coated, S3 SD3			
Available Sizes	Qty/Box	Part#	1000hr
1/4-14 x 1" SD3	3,000	DMIP41410DC *	
1/4-14 x 2" SD3	2,000	DMIPD4314200C *	
1/4-14 x 4" SD3	1,000	DMIPD4314400C *	
1/4-14 x 6" SD3	1,000	DMIPD4314600C *	
1/4-14 x 8" SD3	500	DMIPD4314800C *	
1/4-14 x 10" SD3	250	DMIPD43141000C *	

Code Compliance

*Florida Building Code Compliant 1506.6
**Miami-Dade County # L21-0630.03

Description

Drive: SQ2
Material: C1022, 410SS
Point: #10 SD2, #12 SD3, #14 SD3, SD4
Finish: DMG85 Silver
Substrate/Use: SD2/SD3 Steel .036"-.210"
SD4 Steel 0.12" to 0.25"
Thread: #10-16, #12-24 SD3, 1/4-14 SD3, #14-20 SD4
Thread Diameter #10: Maj: .186" Min: .157"
Thread Diameter #12: Maj: .214" Min: .186"
Thread Diameter #14 (S3): Maj: .246" Min: .215"
Thread Diameter #14 (S4): Maj: .247" Min: .210"
Head Height #10, #12 .060" - .082"
Head Height #14 .112" - .120"
Head Diameter: #10, #12 .432" - .50"
Head Diameter: #14 .490" - .51"
Country of Origin: C1022 Taiwan, 410SS China

Performance Specifications

Tensile Strength (lbs ult)				
#10	#12	#14 (SD3)	#14 (SD5)	
1,900	2,860	3,610	3,870	
Torsional: (in-lbs)				
#10	#12	#14 (SD3)	#14 (SD5)	
76	92	150	150	
Pull out / Withdrawal Values: (lbs ultimate)				
Substrate	#10	#12	#14 (SD3)	#14 (SD5)
1/8"				2,600
12 ga	1,400	1,436	1,290	1,817
14 ga	860	887	1,113	
16 ga	579	680	484	
18 ga	423		390	
20 ga				353
22 ga	216	228	263	

Corrosion Resistance

TAS114 Appendix E G85 Annex A5:1000
Hour, ASTM B117 1000 Hour.

PAN*CON SS - MASONRY

410 Stainless Steel Panclip low profile head fastener designed for installation into predrilled masonry, concrete or wood.

Popular for window, door, roofing panel clip, Duraclad PVC panel and flashing details to concrete substrates. Also popular for use as a removable termination bar anchor into parapet wall applications. The full 410 stainless steel construction with DMG85 Silver corrosion resistant coating exceeds ASTM B117 and FBC 1506.6 standards.

Packaged in 100 piece boxes with a drill bit included.

Product Selection

410 Stainless Steel Silver DMG85 Coating			
Available Sizes	Qty/Case	Part#	
#14 x 1-1/2" SQ2	1,700	DMIPC41415T **	
#14 x 2-3/4" SQ2	1,600	DMIPC414275T *	
#14 x 4" SQ2	1,200	Discontinued	
#14 x 6" SQ2	1,000	DMIPC414600T *	

Code Compliance

*Florida Building Code Compliant 1506.6
**Miami-Dade County # L24-0311.03



Description

Drive: SQ2
Material: 410 Stainless Steel
Point: Diamond, Locating
Finish: DMG85 Silver
Substrate/Use: Concrete, Masonry
Thread: Hi-Lo
Thread Diameter: Maj: .252" Min: .174"
Head Height .07" - .09"
Head Diameter: .49" - .51"
Country of Origin: Taiwan

Performance Specifications

Shear:	1,306 lbs min.
Pull out / Withdrawal Values:	
1/2" OSB	290 lbs Avg
4000 PSI Concrete	790 lbs ult
CMU Block	490 lbs ult

Corrosion Resistance

TAS114 Appendix E G85 Annex A5:1000
Hour, ASTM B117 1000 Hour.

SNAPLOCK PANEL CLIPS

Designed for secure fastening of snap lock style standing seam/concealed fastener metal roofing systems. All DMI panel clips are designed to meet FBC 1506.7 corrosion resistance requirement. Panel clips can be manufactured to fit panels from most brands and styles of roll forming machines. Please specify make and model of machine when ordering. Most styles are designed with built-in fastener relief to help eliminate panel dimpling.


675

1-3/4" Snaplock Ultra Length HD
For 1-3/4" Snaplock Panels multiple versions to fit Quadro, RF, Newtech 675, D175S Knudson, US 175
18 ga steel or SS, 2 hole, 3-1/2" width.

Gauge	Qty/Box	Part#	Height
18G Galv	250	CSN134312G18V-3	1.88"
18G SS	250	CSN134312S18V-3	1.88"


1-3/4\"M

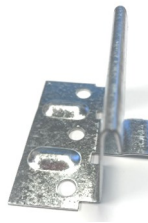
1-3/4" Snaplock Ultra Lgth HD VMOD
For 1-3/4" Snaplock Panels to fit E S2000, PC Snapclad, MS Verticalseam. Modified with lower fastener relief and screw holes to accommodate XLP fasteners.
18 ga steel or SS, 2 hole, 3-1/2" width.

Gauge	Qty/Box	Part#	Height
18G Galv	250	CSN134312G18VMOD	1.88"
18G SS	250	CSN134312S18VMOD	1.88"



1-1/2" Snaplock Ultra Length QSL HD
Fits 1-1/2" Snaplock Panels
fits Quadro, E 1500
18 ga steel or SS, 2 hole, 3-1/2" width

Gauge	Qty/Box	Part#
18G Galv	125	CSN112312G18QV
18G Galv	125	CSN112312G18QVMOD
18G SS	125	CSN112312S18QV



1-1/2" Snaplock Econo QSL LD
Fits Quadro 1-1/2" Snaplock Panels
E 1500
20 ga steel or SS, 3 hole, 2-1/4" width

Gauge	Qty/Box	Part#
20G Galv	500	CSN112214G20QV


675

1-3/4" Snaplock Econo LD
Fits 1-3/4" Snaplock Panels (1-7/8")
fits Quadro, Rollformer, Newtech 675, Knudson, E US 175
18 ga steel or SS, 3 hole, 2-1/4" width

Gauge	Qty/Box	Part#
18G Galv	400	CSN134214G18V
18G SS	400	CSN134214S18V



1-1/4" Snaplock Econo QSL LD
Fits Utility Panels, fits Quadro
24 ga steel 2" width

Gauge	Qty/Box	Part#
24G Galv	600	CSN11420G24QSLV


550

1-1/2" Snaplock NT550 HD
Fits Newtech 550, D550S
20 ga steel or SS, 2 hole, 3-1/2" width

Gauge	Qty/Box	Part#
20G Galv	250	CSN112916G20NHDV
20G SS	250	CSN112916S20NHDV



1" Snaplock Econo QSL LD
Fits Quadro 1" Snaplock Panel
24 ga steel, 2" width

Gauge	Qty/Box	Part#
24G Galv	1,000	CSN10020G24QSLV


450

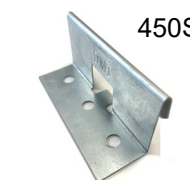
1-1/2"/1-1/4" Snaplock Newtech 450HD
no fastener relief dimples and flat tongue.
Fits 450, Plusmax, D450, SOP15
24 ga steel or SS, 3 hole, 3" width

Gauge	Qty/Box	Part#
24G Galv	500	CSN11430G24V
24G SS	500	CSN11430S24V



1-3/4" Zimmermann SL HD
For 1-3/4" Snaplock Panels multiple versions to fit Zimmermann Z175 Panels
18 ga steel or SS, 2 hole, 3-1/2" width

Gauge	Qty/Box	Part#	Height
18G Galv	250	CSN134312G18V	1.83"
18G SS	250	CSN134312S18V	1.83"


450SL

1-1/2" Snaplock 450SL HD (1-1/4")
Fits Newtech 450SL, DMC 450SL
24 ga steel or SS, 3 hole, 3" width

Gauge	Qty/Box	Part#
24G Galv	500	CSN1143SLU24GNKOV
24G SS	500	CSN1143SLU24SNKOV



1" Snaplock Rollformer Corp Clip
Fits 1" Snaplock Panels (1-1/8")
Fits Rollformer
22 ga steel or 304SS, 2 hole, 2" width

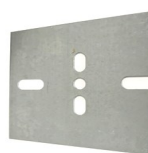
Gauge	Qty/Box	Part#
22G Galv	1,000	CSN118200G22RFV
22G SS	1,000	CSN118200S22RFV



1-1/4" Snaplock Utility Panel Clip
Fits 1-1/4", 1-1/2" Snaplock Panels
Actual clip size 1-3/8" x 2", w/dog ears
24 ga steel, 2 hole, 2" width

Gauge	Qty/Box	Part#
24G Galv	600	DMIUPCGV
24G 304SS	600	DMIUPCSV

DMI UNIVERSAL BEARING PLATES - Create a load bearing surface for panel clips or fasteners overtop of insulation boards.



Universal 4" x 5" slotted for Panel Clips

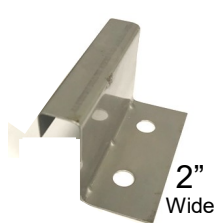
Size	Gauge	Qty/Box	Part#
4" x 5"	20ga G90	250	UBP4620GV
4" x 5"	24ga G90	250	UBP4624GV
4" x 5"	20ga 304SS	250	UBP4520S

MECHANICAL LOCK STANDING SEAM FIXED METAL PANEL CLIPS



MECHANICAL LOCK FIXED PANEL CLIPS

Designed for secure fastening of mechanical lock style standing seam / concealed fastener metal roofing systems. All DMI panel clips are designed to meet FBC 1506.7 corrosion resistance requirement. Panel clips can be manufactured to fit panels from most brands and styles of roll forming machines. Please specify make and model of machine when ordering. Most styles are engineered to give fastener relief, and heights of clips are listed in panel height. 1" tall panel would use 1-1/8" tall clip, 1-1/2" panel would use 1-5/8" clip, etc.



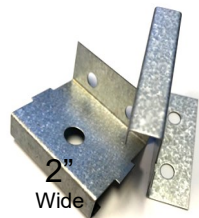
1" Mechanical Lock (1-1/8")
7/16" Top fits RF, NT, KN, D100SS,
EA1301, Galv or SS, 2 hole, 2" width

Gauge	Qty/Box	Part#
26G Galv	1,000	CMF1002716G26V
24G SS	1,000	CMF1002716S24
26G SS	1,000	CMF1002716S26



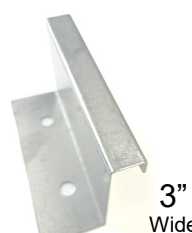
1-1/2" Mechanical Lock (1-5/8")
7/16" Top fits RF, NT, KN, EA1300, D150SS
Galv or Stainless, 2 hole, 2" width

Gauge	Qty/Box	Part#
24G Galv	1,000	CMF1502716G24V
24G SS	1,000	CMF1502716S24V
26G Galv	1,000	CMF1502716G26V
26G SS	1,000	CMF1502716S26V



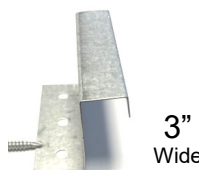
1-1/2" Mechanical Lock NFR (1-1/2")
7/16" Top fits Z1500, KR12, EA1300
US 1505, D150SS 2 hole, 2" width
NFR= No built in fastener relief this
1-1/2" panel clip is 1-1/2" in height.

Gauge	Qty/Box	Part#
26G Galv	1,000	CMF1372716G26
24G SS	1,000	CMF1502716S24NFR
26G SS	350	CMF1502716S26NFR



1-1/2" Mechanical Lock HD (1-5/8")
7/16" Top fits Z1500, EA1300, KR24, RF,
US 1505 D150SS, 2 or 3 hole, 3" width

Gauge	Qty/Box	Part#
24G Galv	500	CMF1503716G24V
24G SS	500	CMF1503716S24V



2" (2-1/8") Newtech Mechanical Lock
3/4" Top fits RF, NT Ultraseam,
Knudson, E, 3 hole, 3" width.

Gauge	Qty/Box	Part#
24G Galv	600	CMF218334G24
24G SS	300	CMF218334S24



1-1/2" Mechanical Lock XHD (1-5/8")
7/16" Top fits Z1500, EA1300, KR24, RF,
US 1505 D150SS, 4 hole, 6" width

Gauge	Qty/Box	Part#
22G Galv	250	CMF1506716G22V
24G SS	250	CMF1506716S24V

EXPANSION CLIPS FOR MECHANICAL LOCK PANEL CLIPS

Designed to allow for thermal expansion while providing secure fastening of mechanical lock style standing seam / concealed fastener metal roofing systems. The expansion style clips are available in 3 different styles; one piece pre-assembled style, a two piece job site assembled and a butterfly style two piece job site assembled. All panel clips are designed to meet FBC 1506.7 corrosion resistance requirements.



1-1/2" One Piece Expansion
fits Quadro, Newtech SS150, RF VS150
2 hole, 4-3/8" width, 1/2" standoff.
Galvanized G90 Top 22ga, Base 16G.
Stainless 304S Top 24ga, Galv Base 16G
Stainless 304S Top 26ga, Galv Base 16G

Gauge	Qty/Box	Part#	Top/Base
Galvanized	100	CMEMLG150	22/16
Stainless	100	CMEMLS150	24/16
Stainless	100	CMEMLS150LD	26/16



2" Newtech 1 PC Expansion
3/4" Top fits Newtech Machines, SSQ200, NT
SS200, NT SS200, ZIM SS2000, SL/DL
2 hole, 4-3/8" width, 1/2" standoff.
Galvanized G90 Top 22ga, Base 16G.
Stainless 304S Top 24ga, Galv Base 16G

Type	Qty/Box	Part#
Galvanized	100	CMEMLG200NT
Galvanized	80	1020252
Stainless	100	CMEMLS200NT



1-1/2" Two Piece Expansion Assembled
7/16" Top fits Newtech and Quadro, SS150
5 hole, 5 base width. Ideal for wood sub-
strates, 24 ga base, 26 ga top assembled

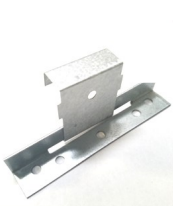
Qty/Box	Part#	24ga Base	Material
500	CMEMLG1502426	GALV	
500	CMEMLS1502426	Stainless	

Qty/Box	Part#	16ga Base	Material
500	CMEMLS1501626	Stainless	



2" Quadro 1PC Expansion
5/8" Top fits Quadro Machines
2 hole, 4-3/8" width, 1/2" standoff.
Galvanized G90 Top 22ga, Base 16G.
Stainless 304S Top 24ga, Galv Base 16G

Gauge	Qty/Box	Part#
Galvanized	100	CMEMLG200QP
Galvanized	100	CMEMLG200QPV
Galvanized	100	1069206
Stainless	100	CMEMLS200QP



2" Newtech 2PC Expansion
3/4" Top fits Newtech Machines, SSQ200
5 hole, 5 base width. Field assembly required
Ideal for wood substrates.

Desc	Qty/Box	Part#	Material
Top 24G	1,000	CMT2003416G24	GALV
Top 24S	1,000	CMT2003416S24	304 SS
Top 26S	1,000	CMT2003416S26	304 SS
Base 18G	500	CMB500G18	GALV



2" Newtech 1PC NT SS210
3/4" Top fits RF23C, ZIM SS2000, US-
200, US-200C E S2500, 2 hole, 4-3/8"
width, Galvanized G90 Top 22ga, Base
16G. Low Float Style

Type	Qty/Box	Part#
Galvanized	100	753279



DOME HEAD BLIND RIVETS

Blind rivets fasten joints without access to the reverse side of the sheet metal. DMI stainless steel rivets are manufactured of corrosion resistant 304 stainless steel. DMI SS rivets exceed the corrosion resistant standards put forth in Florida Building Code section 1506.6. DMI also offers unpainted rivets in 304 stainless steel, 316 stainless steel, aluminum and copper/brass. Rivet length is measured to the end of the rivet body. Some DMI2L 1290V (CCC)100 series rivets are painted on the "business end" on the head only so that once installed only the painted portion is exposed, some colors are dip painted which covers the "business end" and the unseen portion on the rivet.

V100 series painted rivets come packaged in card hanger packaging suitable for peg board stocking.



Product Selection

Stainless Steel Rivet 250 / bag		
<u>Sizes</u>	<u>Qty/Box</u>	<u>Part#</u>
#43 304SS	6,000	DMI2L1290CV (3)
#44 304SS	6,000	DMI2L1300CV (3)
#43 316SS	6,000	DMI43316SS (3)
Stainless Steel Rivet 100/Bag		
<u>Sizes</u>	<u>Qty/Box</u>	<u>Part#</u>
#43 Mill	5,000	DMI2L1290CV100(2)
#43 Standard Colors	5,000	DMI2L1290(color code)100 (1)
#43 Popular Colors	5,000	DMI2L1290V(color code)100(2)
Copper Rivet w/Brass Mandrel 100/bag		
<u>Sizes</u>	<u>Qty/Box</u>	<u>Part#</u>
#42 Copper	5,000	DMI2L4300C
#43 Copper	5,000	DMI2L4300C
#44 Copper	5,000	DMI2L4300C
Aluminum Rivet w/Alum Mandrel 250 / bag		
<u>Sizes</u>	<u>Qty/Box</u>	<u>Part#</u>
#43 Alum Silver	6,000	DMI2L43A1116
#43 Alum Br White	6,000	DMI2L43A014

Color Selection

V100	V100	V100	V100	R100
014 Bright White	001 White	348 Bone White	330 Warm White	553 Parchment
V100	R100	R100	V100	R100
422 Taupe/Clay	109 Sand Beige	415 Beige	248 Light Stone	548 Ivory
V100	V100	V100	V100	V100
020 Tan (STD)	629 Sierra Tan	110 Cocoa Brown	1280 Buckskin	537 Medium Bronze
V100	V100	V100	V100	V100
302 Pearl Gray	850 Ash Gray	324 Dark Bronze	042 Burnished Slate	
V100	V100	V100	V100	V100
091 Zinc Gray	051 Charcoal Gray	416 Slate Gray	1111 Mansard Brown	
R100	R100	V100	V100	
047 Colony Green	660 Hemlock	232 Evergreen	508 Patina Green	
V100	V100	R100	R100	
928 Terracotta	102 Crimson Red	798 Hartford/Fern	228 Forest Green	
R100	V100	R100	V100	
890 Red (STD)	074 Colonial Red	393 Burgundy	432 Blue Teal	
V100	V100	V100	V100	
023 Gloss Black	507 Matte Black	843 Gallery Blue	012 Caribbean Blue	
Metallics				
V100	R100	R100	V100	
Metallic Paints >	1161 Silver	1160 Champagne	1162 Zachtique	1116 Copper Penny

Description	STSS
Head:	Domed Head
Material:	304SS, 304SS Mandrell
Finish:	Unpainted or Poly Painted
Substrate/Use:	Sheet Metal
Size:	#43 #44
Rivet Diameter:	1/8" 1/8"
Rivet Length:	0.337" 0.400"
Head Diameter:	0.238" 0.238"
Head Thickness:	0.040 0.040
Country of Origin:	China(2), Taiwan(3), U.S.A.(1)

Performance Specifications

Tensile:	530 lbs
Shear:	420 lbs

Corrosion Resistance

TAS114 Appendix E G85 Annex A5:1000 Hour, ASTM B117 1000 Hour.

Code Compliance

*Florida Building Code Compliant 1506.6
**Miami-Dade County – Pending

Description	Copper
Head:	Domed Head
Material:	Copper, Brass Mandrell
Finish:	Unpainted
Substrate/Use:	Copper Sheet Metal
Size:	#42 #43 #44
Rivet Diameter:	1/8" 1/8" 1/8"
Rivet Length:	0.275 0.337" 0.400"
Head Diameter:	0.238" 0.238" 0.238"
Head Thickness:	0.040 0.040 0.040
Country of Origin:	China

Description	Aluminum
Head:	Domed Head
Material:	Aluminum
Finish:	Unpainted
Substrate/Use:	Painted
Rivet Diameter:	1/8"
Rivet Length:	0.337"
Head Diameter:	0.238"
Head Thickness:	0.040
Country of Origin:	Taiwan

Rivet Grip Ranges:

#42	0.063" - 0.125"
#43	0.126" - 0.187"
#44	0.188" - 0.250"
#46	0.313" - 0.375"
#48	0.376" - 0.500"

The color chart is representative of our standard color offerings. Colors may vary from actual product due to color variations in the catalog printing process. Actual colored product samples are available on request.

#10 WOODZIP™

Metal to Wood Screw

Designed for the installation of metal roofing and sidewall panels into wood substrates. The WoodZip features a vulcanized bonded E.P.D.M. washer for a positive seal against steel panels. The TP-17 slotted cut point helps to reduce driving torque while the 1/4" HWH drive provides a stable driving platform. The #10 WOODZIP™ FLMD adds a full DMG85 corrosion resistant coating that is FBC compliant and Miami-Dade County Listed. Popular for post frame building panel installation. All colors and lengths are packaged in convenient 250 count bags. Woodzip offers 27 powder coated color options in most lengths. Mill finish Woodzip features a full 1000 hr silver coating. All Woodzip screws are bagged in 250 count bags.

Product Selection

Zinc Plated, Clear Coat, Powder Coat 1/4" Head

Available Sizes	Qty/Box	Part#
#10 x 1"	3,000	DME10H100W
#10 x 1-1/2"	2,500	DME10H150W
#10 x 2"	2,000	DME10H200W
#10 x 2-1/2"	1,500	DME10H250W
#10 x 3"	1,000	DME10H300W

Silver DMG85 Coated, Miami-Dade L21-0630.06

Available Sizes	Qty/Box	Part#
#10 x 1"	2,500	DMI4H100 **
#10 x 1-1/2"	2,500	DMI4H150 **
#10 x 2"	2,000	DMI4H200 **
#10 x 4" Silver	1,000	DMI4HCS400*
#10 x 4" Br White	1,000	DMI4HCW400*

Zinc Plated, Clear Coat, Powder Coat 5/16" Head

Available Sizes	Qty/Box	Part#
#14 x 1"	2,500	DME14H100W
#14 x 1-1/2"	2,000	DME14H150W
#14 x 2"	1,500	DME14H200W



Description

Drive: 1/4" HWH, 5/16 CHWH (#14)
Material: C1022
Point: TP-17
Finish: Zinc Plate, DMG85 Silver
Substrate/Use: Wood
Thread: HILO 14 TPI, 15 TPI (FLMD)
Thread Diameter: Maj: .193" Min .131"
Washer Diameter: 0.468"
Country of Origin: China, Taiwan (FLMD)

Performance Specifications

	Woodzip	WoodZIP FLMD
Torsional:	60 in-lbs	60 in lbs
Tensile:		1,530 lbs. min.
Shear:		1,298 lbs min.
Pull out / Withdrawal Values: lbs ultimate		
S. Yellow Pine	810 lbs	999 Ult
3/4" PLY	665 lbs ult	571 Avg
1/2" PLY	429 lbs ult	412 Ult
1/2" OSB	223 lbs ult	192 Ult

Corrosion Resistance

Woodzip FLMD: TAS114 Appendix E G85
Annex A5:1000 Hour, ASTM B117 1000 Hour.

Code Compliance

*Florida Building Code Compliant 1506.6
**Miami-Dade County # L21-0630.06



#12 DIRECT*SEAL MP

MULTI-PURPOSE FASTENERS: Applications include wood, metal deck, and masonry. Popular fastener for replacing #9 and #10 wood screws.

This fastener is designed for a multitude of applications including panel and fixture attachment to wood, masonry and light gauge metal substrates. 1/4" Drive Hex head with a bonded sealing washers and DMG85 100 full silver corrosion resistant coating. Packaged in point of sale plastic pails. Lengths up to 8"

Product Selection

Silver DMG85 coating, 1/4" Head

Length	Qty/Box	Part#
3/4"	400/Pail	DMI3DSF12034DP1WT *
1-1/2"	300/Pail	DMI3DSF12150DP1WT *
2-1/4"	150/Pail	DMI3DSF12214DP1WT *
3-3/4"	700/Pail	DMI3DSF12334DP1WT *
4-1/2"	600/Pail	DMI3DSF12412DP1WT *
5"	600/Pail	DMI3DSF12500DP1WT *
6"	300/Pail	DMI3DSF12600DP1WT *
8"	300/Pail	DMI3DSF12800DP1WT *

Code Compliance

*Florida Building Code Compliant 1506.6

Corrosion Resistance

ASTM B117 1000 Hour.



Description

Drive: SQ2
Material: C1022, 410SS
Point: SD1
Finish: DMG85 Black or Silver(SS)
Substrate/Use: Wood, Metal Deck, Concrete
Metal Substrate: 22 ga up to 16ga
Thread: 13 TPI, Buttress
Thread Diameter: Maj: .236" Min: .160"
Washer Diameter: 0.628"
Country of Origin: Taiwan

Performance Specifications

Torsional:	110 in-lbs
Pull out / Withdrawal Values:	
3/4" PLY	630 lbs ult
1/2" PLY	423 lbs ult
7/16" OSB	333 lbs ult
22 ga Steel 102ksi	575 lbs ult
22 ga Steel 80ksi	456 lbs ult
16 ga Steel	1,103 lbs ult
4000 PSI Concrete	675 lbs ult
CMU Block	432 lbs ult

#9-15 WOODZIPSS-A

Designed for the installation of aluminum roofing panels and aluminum liner panels to wood substrates. This fastener comes standard with a full DMG85 silver coating for additional protection from dissimilar metal reactions. This fastener is assembled with a 304SS/EPDM 12mm bonded washer. The WoodZipSS-A is Miami-Dade Counted listed and certified for corrosion resistance and shear strength. Pilot hole pre-drill and sealing suggested. Full 304 series stainless steel screws will not penetrate steel panels please be sure to pre-drill.

Pull out Substrate	Pull out Ultimate Value
1" x 4" Pine	542 lbs
1/2" Plywood	285 lbs
3/4" Plywood	466 lbs



#9-15 w/12mm washer 1/4" Hex Drive

Size	Qty/Box	Part#
1" Bright White 014	2,500	DMI4HSS9100S014
1-1/2" Silver	2,500	DMI4HSS9150SA
1-1/2" Bright White	2,500	DMI4HSS9150SA014
1-1/2" Charcoal	2,500	DMI4HSS9150SA051
1-1/2" Dark Bronze	2,500	DMI4HSS9150SA324
1-1/2" Mansard Brown	2,500	DMI4HSS9150SA714
1-1/2" Pearl Gray	2,500	DMI4HSS9150SA302
1-1/2" Slate Gray	2,500	DMI4HSS9150SA416
1-1/2" Zinc Gray	2,500	DMI4HSS9150SA091



#12 WOODZIP S.C.A.M.P. 304 STAINLESS STEEL 5/16" CAP HEAD

This little devil of a fastener was designed for original panel installation of 5V Crimp and other metal roofing panels to wood substrates. The #12 Woodzip SCAMP has proven to be a great performer into oriented strand board (OSB) providing higher pullout values than competing #10 fasteners. It has also found widespread use as a replacement fastener for old worn or backed out #9/#10 metal to wood roofing fasteners. The SCAMP has been tested for installation into plywood, OSB, and dimensional pine lumber as well as standard concrete and CMU block substrates. This 304 stainless steel capped head fastener features an EPDM/304 Stainless steel washer designed to tuck under the cap head and free spin on installation eliminating washer spit out.

Product Selection

304SSC, DMG85, 5/16" Head, MD L24-0311.02

Available Sizes	Qty/Box	Part#
#12 x 3/4"	2,500	DMI4SSC12034M*
#12 x 1"	2,500	DMI4SSC12100M*
#12 x 1-1/2"	2,000	DMI4SSC12150M**
#12 x 2"	1,500	DMI4SSC12200M**
#12 x 2-1/2"	1,000	DMI4SSC12250M**
#12 x 4"	1,000	DMI4SSC12400M*

Corrosion Resistance

TAS114 Appendix E G85 Annex A5:1000 Hour, ASTM B117 1000 Hour.

Code Compliance



*Florida Building Code Compliant 1506.6

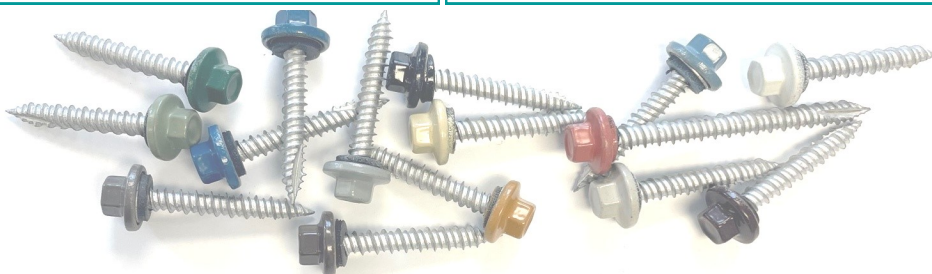
**Miami-Dade County # L24-0311.02

Description

Drive: 5/16 CHWH
Material: 304SS Head, C1022 Body
Point: TP-17
Finish: Zinc Plate, DMG85 Silver
Substrate/Use: Wood, Masonry
Thread: HILO 15 TPI
Thread Diameter: Maj: .221" Min .158"
Country of Origin: Taiwan

Performance Specifications

Shear - Double Shear: 4,622 lbs avg.
Pull out / Withdrawal Values: lbs ultimate
S. Yellow Pine 2x 1,712 lbs Avg
3/4" PLY 727 lbs ult
1/2" PLY 425 lbs ult
1/2" OSB 352 lbs ult
4000 PSI Concrete 971 lbs ult
CME Concrete Block 841 lbs ult



Available painted to complement many metal roofing panel colors. These fasteners are exclusively available in our weather resistant powder coated finish in 1-1/2" and 2-1/2" lengths.



REPLACEMENT SCREWS 304 STAINLESS STEEL HEAD S.C.A.M.P. TAPPER

The answer to your needs for a higher performance retrofit or replacement fastener for wood substrates. Using the SCAMP replacement fasteners to refresh old, corroded or loosened fasteners can extend the life of your metal roofing system, while saving the cost of installing an entirely new roof system. The unique availability of #12, #14, #17 and #20 provides a fastener retrofit most commercially available fasteners, with a lifetime warranted stainless steel head protection.

Product Selection

304SSC, DMG85

Available Sizes	Qty/Box	Part#
#14 x 1-1/2"	1,500	DMI4SSC14150M *
#17 x 1-1/2"	1,000	DMI4SSC17150M *
#20" x 1"	2,000	DMI4SSC516100M*
#20 x 2"	1,000	DMI4SSC516200M*
#28 x 1"	1,000	DMI4SSC38100M *

Description

Material: 304SS Head, C1022 Body
Finish: Zinc Plate, DMG85 Silver
Substrate/Use: Wood
Country of Origin: Taiwan

Corrosion Resistance

TAS114 Appendix E G85 Annex A5:1000 Hour, ASTM B117 1000 Hour.

Code Compliance

*Florida Building Code Compliant 1506.6

Specifications

#14 SCAMP TAPPER - 5/16 CHWH 304SS, HI-LO TP-17 Point. Assembled with EPDM Sealing Washer, Metal to Wood.
Outside thread diameter: 0.254"
Inside shank diameter: 0.171"
Pullout-Testing @ 2in/min Average Ultimate
3/4" CDX Plywood 579 lbs 648 lbs
1/2" CDX Plywood 456 lbs 507 lbs
1/2" OSB 291 lbs 361 lbs

#20 SCAMP TAPPER - 3/8" CHWH 304SS, HI-LO TP-17 Point. Assembled with EPDM Sealing Washer, Metal to Wood.
Outside thread diameter: 0.313"
Inside shank diameter: 0.208"
Pullout-Testing @ 2in/min Average Ultimate
3/4" CDX Plywood 730 lbs 860 lbs
1/2" CDX Plywood 498 lbs 578 lbs
1/2" OSB 365 lbs 397 lbs



#10 WOODZIP S.C.A.M.P. 304 SSC 1/4" CAP HEAD

This is DMI's entry level long life metal to wood fastener. Featuring a 1/4" stainless steel cap head that encapsulates an seal style EPDM rubber washer. DMG85 coated shank for additional corrosion protection. Use with dimensional lumber for best pull out performance.

Product Selection

Available Sizes	Qty/Box	Part#
#10 x 1"	2,500	DMI4SSC100M *
#10 x 1-1/2"	2,500	DMI4SSC150M *
#10 x 2"	2,000	DMI4SSC200M *
#10 x 2-1/2"	1,000	DMI4SSC250M *
#10 x 3"	1,000	DMI4SSC300M *
#10 x 3-1/2"	1,000	DMI4SSC350M *

Material: 304SS Head, C1022 Body
Finish: Zinc Plate, DMG85 Silver
Substrate/Use: Wood
Country of Origin: Taiwan

Description

Drive: 1/4" CHWH
Material: 304SS Head, C1022 Body
Finish: Zinc Plate, DMG85 Silver
Thread: HILO 15 TPI
Thread Diameter: Maj: .198" Min .142"
Country of Origin: Taiwan

Performance Spec Pull Out

S. Yellow Pine 2x 753 lbs ult
3/4" PLY 587 lbs ult
1/2" PLY 384 lbs ult
1/2" OSB 198 lbs ult



CHWH STEELZIP SELF DRILL - MTM

Precision self drilling point for metal to metal fastening of metal panels to steel substrates. Copper hex washer head with a EPDM seal washer.

Galvanized electro plating plus clear shank coating. Unpainted mill finish SteelZip has a full DMG85 Silver coating. Cut washer style provides a positive seal against metal panels even when driven at an angle.

Powder coat head paint is available on over 23 standard colors.

Packaged 250 pcs / bag.

Product Selection

Light/Medium steel drill up to 8 ga. 5/16" CHWH

Available Sizes	Qty/Box	Part#
#12 x 3/4" SD3	2,500	DMICSD312034M
#12 x 1" SD3	2,500	DMICSD312100M
#12 x 1-1/4" SD3	2,500	DMICSD312125M
#12 x 1-1/2" SD3	2,000	DMICSD312150M
#12 x 2" SD3	1,500	DMICSD312200M
#12 x 2" SD3	1,500	DMICSD312200M
#12 x 3" SD3	1,000	DMICSD312300M

Stitch Panel Lap up to 16 ga Steel, 5/16" CHWH

Available Sizes	Qty/Box	Part#
#14 x 7/8" SD1	2,500	DMICSD114078M

Mill Finish part numbers shown, painted fastener part codes would replace the M with a 3 or 4 digit paint code.

Description

Drive: 5/16 CHWH
Screw Material: C1022
Washer Material: E.P.D.M. Cut Seal Washer
Point: SD3
Finish: Zinc Plate, DMG85 Silver
Substrate/Use: Steel 0.059" - 0.210" Thick
Thread: 14 TPI
Thread Diameter: Maj: .212" Min .155"
Country of Origin: China

Performance Specifications

Torsional: 92 in lbs.
Shear : 2,080 lbs avg.
Tensile: 2,900 lbs avg.
Pull out / Withdrawal Values: lbs ultimate
12 ga 1,540 lbs ult
14 ga 920 lbs ult
16 ga 680 lbs ult



#12SD5

HWH STEELZIP FLMD SELF DRILL - MTM

Precision self drilling point for metal to metal fastening of metal panels to steel substrates. HWH bonded washer head style. Galvanized electro plating plus DMG85 Silver full fastener corrosion protection. G90 Galvanized and coated / EPDM washers are assembled for a positive seal against metal panels.

Product Selection

Light/Medium steel drill up to 8 ga. 5/16" CHWH

Available Sizes	Qty/Box	Part#
#12 x 3/4" SD3	2,500	DM14SD3WC12034M *
#12 x 1" SD3	2,500	DM14SD3WC12100M *
#12 x 1-1/4" SD3	2,500	DM14SD3WC12125M *
#12 x 1-1/2" SD3	2,000	DM14SD3WC12150M *
#12 x 2" SD3	1,500	DM14SD3WC12200M *
#12 x 3" SD3	1,000	DM14SD3WC12300M *
#14 x 1-1/2" SD3	1,500	DM14SD3WC14150M *
#14 x 1-1/2" SD3(LW)	1,000	DM14SD3WC14150W114 *

Stitch Panel Lap up to 16 ga Steel, 5/16" CHWH

Available Sizes	Qty/Box	Part#
#14 x 7/8" SD1	2,500	DM14SD1WC14078M *

Medium/Heavy steel drill up to 1/2" Steel

Available Sizes	Qty/Box	Part#
#12 x 1-1/2" SD5	2,000	DM14SD5WC12150M *

Description

Drive: 5/16 HWH
Screw Material: C1022
Washer Material: G90 Bonded E.P.D.M.
Finish: Zinc Plate, DMG85 Silver
Country of Origin: Taiwan

Description

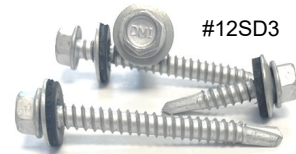
#12-14 SD3 Point: SD3
Substrate/Use: Steel 0.059" - 0.210" Thick
Thread: 14 TPI
Thread Diameter: Maj: .212" Min .155"
#12-24 SD5 Point: SD5
Substrate/Use: Steel 0.210" - 0.500" Thick
Thread: 24 TPI
Thread Diameter: Maj: .212" Min .192"

Performance Specifications

	#12-14 SD3	#12-24 SD5
Torsional:	92 in lbs.	100 in lbs.
Shear :	2,080 lbs avg.	2,200 lbs avg
Tensile:	2,900 lbs avg.	3,200 lbs avg
Pull out / Withdrawal Values: lbs ultimate		
12 ga	1,540	12 ga 1,300
14 ga	920	3/16" 3,200
16 ga	680	1/4" 3,200

Code Compliance

*Florida Building Code Compliant 1506.6



#12SD3

STEELZIP S.C.A.M.P. 304 STAINLESS STEEL CAP HEAD

The SteelZip SCAMP is a self drilling and tapping fastener with a protective 304 series stainless steel cap head shaped to hold and protect the EPDM long life rubber washer underneath for a positive seal to the metal panel. The corrosion protection does not end with the exposed cap and is backed up with the DMG85 long life barrier coating on the strong carbon steel shank.

The SteelZip SCAMP is now Miami-Dade Product Listed And is protected by a limited Lifetime warranty.



Product Selection

Light/Medium steel drill up to 8 ga. 5/16" CHWH

Available Sizes	Qty/Box	Part#
#12 x 1" SD3	2,500	DM14SSCSD3100M **
#12 x 1-1/4" SD3	2,500	DM14SSCSD3125M **
#12 x 1-1/2" SD3	2,000	DM14SSCSD3150M **
#12 x 2" SD3	1,500	DM14SSCSD3200M *
#14 x 1-1/4" SD3	1,500	DM14SSCSD314125M**
#20 x 1-1/4" SD3	1,000	DM14SSCSD3516125M*

Stitch Panel Lap up to 16 ga Steel, 5/16" CHWH

Available Sizes	Qty/Box	Part#
#14 x 7/8" SD1	2,500	DM14SSCSD114078M **

Medium/Heavy steel drill up to 1/2" Steel

Available Sizes	Qty/Box	Part#
1/4-20 x 1-3/4"	1,000	DM14SSCSD514134M **
1/4-20 x 1-3/4"	1,000	DM14SSCSD514134001 **

Description

Drive: 5/16" CHWH , 3/8" HWH (#20)
Screw Material: C1022
Washer Material: G90 Bonded E.P.D.M.
Finish: Zinc Plate, DMG85 Silver
Country of Origin: Taiwan
Point: SD3
Substrate/Use: Steel 0.059" - 0.210" Thick
Thread: 14 TPI
Thread Diameter: Maj: .212" Min .166"

Performance Specifications

Torsional: 92 in lbs.
Shear : 2,080 lbs avg.
Tensile: 2,900 lbs avg.
Pull out / Withdrawal Values: lbs ultimate
12 ga 1,540
14 ga 920
16 ga 680

Code Compliance

*Florida Building Code Compliant 1506.6

**Dade County Listing #12 # L 20-1105.02

**Dade County Listing #14 # L 20-1105.01

#14-10 DEK*ZIP FASTENER (PH3)

The #14-10 DEK*ZIP fastener is designed for insulation or membrane attachment to wood, concrete and light gauge metal decking. Popular for use in low slope, built up and commercial roofing applications. Also used as a metal roofing panel clip fastener through multi-thickness insulation into metal deck or wood substrates.

- PRECISION SD#1 DRILL POINT
- BLACK 1000 HR COATING, CORROSION RESISTANT TO FM 4470 STANDARD, ASTM D6294, DIN50018 SFW2.0S.
- COMPATIBLE WITH STANDARD SEAM AND STRESS PLATES
- PACKAGED IN JOBSITE FRIENDLY; RE-SEALABLE PLASTIC PAILS
- PHILLIPS #3 DRIVE
- COMPATIBLE WITH DMI METAL ROOFING PANEL CLIPS

Strength	Average Value
Tensile	3,980 lbs
Shear	2,768 lbs
Torsional	141 in lbs

Pull Out, Withdrawal	Steel Substrate Avg Value
16 ga	940 (50.0 KSI)
18 ga	453 (33.0 KSI)
22 ga	405 (80.0 KSI)
24 ga	301 (36.5 KSI)



Size	Part #	Qty/Pail
#14 x 2"	DMICRS114200	1,000
#14 x 3"	DMICRS114300	1,000
#14 x 4"	DMICRS114400	1,000
#14 x 5"	DMICRS114500	1,000
#14 x 6"	DMICRS114600	1,000
#14 x 7"	DMICRS114700	500
#14 x 8"	DMICRS114800	500
#14 x 9"	DMICRS114900	500
#14 x 10"	DMICRS1141000	500
#14 x 11"	DMICRS1141100	500
#14 x 12"	DMICRS1141200	500



Pull Out, Withdrawal	Wood Substrate Avg Value
2X SYP Pine	1647 lbs (1.5" Embedment)
1/2" Plywood	551 lbs

#15-13 DEK*ZIP XHD FASTENER (PH3)

The #15-13 XHD DEK*ZIP fastener is designed for insulation or EPDM, TPO or PVC membrane attachment to wood, concrete and light gauge metal decking. Popular for use in low slope, built up, modified bitumen and commercial roofing applications. The #15 Extra Heavy duty DEK*ZIP fastener is our high strength fastener offering for the most demanding of applications.

- PRECISION SD#1 DRILL POINT
- BLACK 1000 HR COATING, CORROSION RESISTANT TO FM 4470 STANDARD, ASTM D6294, DIN50018 SFW2.0S.
- COMPATIBLE WITH STANDARD SEAM AND STRESS PLATES
- PACKAGED IN JOBSITE FRIENDLY RE-SEALABLE PLASTIC PAILS
- PHILLIPS #3 DRIVE

Strength	Average Value
Tensile	4,183 lbs
Shear	2,838 lbs
Torsional	152 in lbs

Pull Out, Withdrawal	Steel Substrate Avg Value
16 ga	1352 lbs (50.0 KSI)
18 ga	730 lbs (33.0 KSI)
22 ga	565.5 lbs (80.0 KSI)
24 ga	367 lbs (36.5 KSI)

Pull Out, Withdrawal	Wood Substrate Avg Value
2X SYP Pine	1506 lbs (1.5" Embedment)
1/2" Plywood	554 lbs



Size	Part #	Qty/Pail
#15 x 1.25"	DMICRS115114	1,000
#15 x 2"	DMICRS115200	1,000
#15 x 3"	DMICRS115300	1,000
#15 x 4"	DMICRS115400	1,000
#15 x 5"	DMICRS115500	500
#15 x 6"	DMICRS115600	500
#15 x 7"	DMICRS115700	500
#15 x 8"	DMICRS115800	500
#15 x 9"	DMICRS115900	500
#15 x 10"	DMICRS1151000	500
#15 x 11"	DMICRS1151100	500
#15 x 12"	DMICRS1151200	250

Size	Part #	Qty/Box
#15 x 14"	DMICRS1151400	250
#15 x 16"	DMICRS1151600	250
#15 x 18"	DMICRS1151800	250
#15 x 20"	DMICRS1152000	250
#15 x 22"	DMICRS1152200	250
#15 x 24"	DMICRS1152400	250



#14 STAINLESS STEEL PANCLIP-SD-SS-L
Light gauge applications up to 18 ga

#14-13 Stainless Steel fastener designed for clip, stress plate, nailbase and fixture attachment to metal decking from 22ga to 18ga in thickness. The Silver DMG85 coating provides a high level of corrosion & dissimilar metal reaction resistance. Panclip SD-SS-L comes bulk packaged and has a #2 square drive. DMG85 coated 410 Stainless steel exceeds 1506.6 & MDC standards.



SILVER STAINLESS STEEL PARTS		
PANCLIP SD-SS-L 410SS DMG85 SILVER		
Available Sizes	Qty/Box	Part#
#14 x 1-1/2"	2,500	DMIP41415D
#14 x 3"	1,000	DMIP41430D
#14 x 5"	500	DMIP41450D
#14 x 7"	500	DMIP41470D
#14 x 10"	500	DMIP414100D

Performance Specifications

Pull out / Withdrawal Values:	
3/4" PLY	630 lbs ult
1/2" PLY	423 lbs ult
7/16" OSB	333 lbs ult
22 ga Steel 102 ^{ksi}	575 lbs ult
22 ga Steel 80 ^{ksi}	456 lbs ult
16 ga Steel	1,103 lbs ult
4000 PSI Concrete	675 lbs ult
CMU Block	432 lbs ult

Corrosion Resistance

TAS114 Appendix E G85 Annex A5:1000 Hour, ASTM B117 1000 Hour.

1/4-14 PANCLIP-SD SELF DRILLING SD3
"DMI PURLIN SCREWS"

Medium gauge applications .036"- .210"

Panclip low profile pancake head mated to a self drilling drill point for drill and tap performance into metal and steel substrates. Designed to secure stress and membrane plates into metal substrates up to 8 ga steel. SD3 point fasteners are designed to self drill and tap into metal substrates from 22ga up to 8 ga steel. PANCLIP-SD features the 1000hr DMG85 silver coating to meet FBC1506.6 and other corrosion resistance requirements. 410 stainless steel coated DMG85 coating. Offering high strength with a higher level of corrosion resistance.



PANCLIP SD - DMI SILVER COATED S3		
Available Sizes	Qty/Box	Part# 1000hr
1/4-14 x 1-1/4" SD3	3,500	DMIPD314125C*
1/4-14 x 2" SD3	2,000	DMIPD314200C*
1/4-14 x 4" SD3	1,000	DMIPD314400C*
1/4-14 x 6" SD3	1,000	DMIPD314600C*
1/4-14 x 8" SD3	500	DMIPD314800C*
1/4-14 x 10" SD3	500	DMIPD3141000C*

Stainless Steel	Qty/Box	Part# SS
1/4-14 x 1" SD3	3,000	DMIPD4314125C*
1/4-14 x 2" SD3	2,000	DMIPD4314200C*
1/4-14 x 4" SD3	1,000	DMIPD4314400C*
1/4-14 x 6" SD3	500	DMIPD4314600C*
1/4-14 x 8" SD3	500	DMIPD4314800C*
1/4-14 x 10" SD3	250	DMIPD43141000C*

Performance Specifications

Substrate:	.036" - .210"
Head Height	.112" - .120"
Thread Diameter Maj:	.246" Min: .215"

Pull out / Withdrawal Values:

22 ga Steel	263 lbs avg
18 ga Steel	390 lbs ult
16 ga Steel	484 lbs ult
14 ga Steel	1,113 lbs ult
12 ga Steel	1,290 lbs ult

Corrosion Resistance

ASTM B117 1000 Hour.

Code Compliance

*Florida Building Code Compliant 1506.6

1/4-20 PANCLIP-SD HD SELF DRILL SD4
"DMI HEAVY DUTY PURLIN SCREWS"

Heavy gauge/purlin applications .12" - .250"

Panclip low profile pancake head designed for stress plates, bearing plates and clips into steel substrates. PANCLIP-SD HD features a SD4 heavy drill point and square drive #3 for driving stability. Fine thread shank for engagement into medium to heavy steel substrates. Fully coated with DMG85 1000hr silver coating to meet FBC1506.6 and other corrosion resistance requirements.



PANCLIP SD4 HD - DMI SILVER COATED SQ3		
Available Sizes	Qty/Box	Part# 1000hr
1/4-20 x 1-1/2"	2,500	DMIP514150TC *
1/4-20 x 3"	1,500	DMIP514300TC *
1/4-20 x 5"	1,000	DMIP514500TC *
1/4-20 x 7"	500	DMIP514700TC *
Bulk packaged (not bagged)		

Code Compliance

*Florida Building Code Compliant 1506.6

Performance Specifications

Substrate:	.12" - .250"
Head Height	.112" - .120"
Thread Diameter Maj:	.247" Min: .210"

Pull out / Withdrawal Values:

20 ga Steel	353 lbs ult
12 ga Steel	1,817 lbs ult
1/8" Steel	2,600 lbs ult

Corrosion Resistance

ASTM B117 1000 Hour.



DEK*ZIP 3" GALVALUME
STEEL ROUND 3"
INSULATION STRESS
PLATE

The 3" round steel DEK-ZIP stress plates are designed to distribute clamping force of commercial roofing fasteners. Popular for insulation board and coverboard attachment to steel, wood or masonry roof decks. Our most popular plate for holding rigid insulation / ISO boards.

Galvalume Insulation Stress Plate		
Sizes	Qty/Pail	Part#
3" Insulation	1,000	DMIP3GVVP
3" Insulation	1,000	DMIP3GVPFM

Compatible with: #12 Dekfast, #14 DEK*ZIP, #15 DEKZIP, #14 Dekfast, #15 Dekfast, 1/4" Dekfast Spike, TPR Peel Rivet, #12-24 Purlin fasteners, #10 #12 or #14 Panclip SDL and Panclip SD

Performance Specifications

Material Thickness:	0.019"
Material:	AZ50 Galvalume
Material Specification:	SAE J1392
Outside Diameter:	3"
Inside Diameter:	0.268"
Pull Over Values:	
#14 Dekzip:	482 lbs Ult
#14 Panclip SD-L:	749 lbs Ult



DEK*ZIP MEMBRANE SEAM
PLATES
20-GA GALVALUME STEEL
ROUND 2-3/8" BARBED
MEMBRANE PLATE

The 2-3/8" round steel DEK-ZIP Membrane stress plates are designed to attached single ply and modified bituminous membranes to the to steel, wood or masonry roof decks. Multiple rib design for strength with barbs. Recessed fastener hole of low profile installation.

Galvalume Membrane Seam Plate		
Sizes	Qty/Pail	Part#
2-3/8"	1,000	DMIP2GVVP
2-3/8"	500	DMIP2GVPFM

Compatible with: #12 Dekfast, #14 DEK*ZIP, #15 DEKZIP, #14 Dekfast, #15 Dekfast, 1/4" Dekfast Spike, TPR Peel Rivet, #12-24 Purlin fasteners, #10 #12 or #14 Panclip SDL and Panclip SD

Performance Specifications

Material Thickness:	0.038"
Material:	AZ50 Galvalume
Material Specification:	SAE J1392
Outside Diameter:	2.375"
Pull Over Values:	
#14 Dekzip:	1,397 lbs Ult
#14 Panclip SD-L:	1,942 lbs Ult

DEK*ZIP RIBBED TERMINATION BAR WITH LIP (KICK)

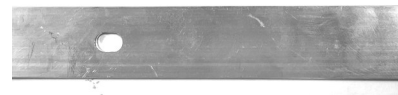
Dimensions: 0.050" thick x 0.922" wide x 10' long
 Holes: 0.268" x 0.380" slotted at 6" on center standard
 For use with: PAN*CON, #14 or #15 DEK*ZIP, #14 or #15 Dekfast, ZAC Anchor, Zinc Nailin Anchor, CON*ZIP, and Direct*Seal MP.

500 LNFT / Tube (50 pieces x 10') **PART# DMI9RTBK10A**


DEK*ZIP RIBBED TERMINATION BAR FLAT

Dimensions: 0.075" edge x 0.100" ribs x 1" wide x 10' long
 Holes: 0.268" x 0.380" slotted at 6" on center standard
 For use with: PAN*CON, #14 or #15 DEK*ZIP, #14 or #15 Dekfast, ZAC Anchor, Zinc Nailin Anchor, CON*ZIP, and Direct*Seal MP.

500 LNFT / Tube (50 pieces x 10') **Part# DMI9RTBF10A**


**CON*ZIP SCAMP - WASHERED
REMOVABLE TERM BAR ANCHOR**

The CONZIP SCAMP features a 304 Stainless steel capped head and HILO concrete threaded shank. This 304 Stainless Steel head and DMG85 Silver corrosion resistant shank coating exceeds ASTM B117 and FBC 1506.6 standards for excellent corrosion protection. 5/16" Hex drive. 7/32" Drill bit required for installation.

Product Selection

Length	Qty/Box	Part#
1-1/2"	1,000	DMICSSC14150M


Description

Drive: 5/16" Hex
 Material: 304 SS CHWH Head, C1022 Shank
 Point: Diamond, Locating
 Finish: DMG85 Silver Shank
 Substrate/Use: Concrete, Masonry
 Thread: Hi-Lo
 Thread Diameter: Maj: .252" Min: .174"
 Country of Origin: Taiwan

**REMOVABLE TERM BAR ANCHOR
PAN*CON SS - MASONRY OR WOOD**

The PAN*CON is the combination of the low profile Panclip head and a HILO concrete threaded shank. This 410 Stainless Steel PAN*CON features a DMG85 Silver corrosion resistant coating exceeds ASTM B117 and FBC 1506.6 standards for excellent corrosion protection. SQ2 drive. Packaged in 100 piece boxes with a drill bit included. Popular for termination bar, Duraclad and standing seam attachment to masonry. The PAN*CON is also an excellent substitute for HWH masonry screw applications. See page 6 for specifications.


Pan*Con 410 SS C Point SQ2 Drive

Available Sizes	Qty/Case	Part#
#14 x 1-1/2" SQ2	1,700	DMIPC41415T
#14 x 2-3/4" SQ2	1,600	DMIPC414275T
#14 x 6" SQ2	1,200	DMIPC414600T

One drill bit comes in every 100 count box
 S.O. sizes are available by special order minimums & lead times will apply. Imported.

S.O. Sizes	Qty/Case	Part#
#14 x 4" SQ2	1,200	DMIPC414400T


HAMMER DRIVE ANCHORS

Termination bar fastener designed for installation into concrete, block, brick and stone. Zinc composition to prevent corrosion with zinc plated nail/pin. Stainless steel nailin anchors have a 304 stainless steel pin with the same zinc body to resist corrosion. Pre-drill and hammer pin for installation.
 * Now available in plastic pails with drill bit

Product Selection

Zinc Pin Sizes	Qty/Box	Part#
3/16" x 7/8"	100/1,000	DMI4N31678
1/4" x 1"	100/1,000	DMI4N7100
1/4" x 1-1/4"	100/1,000	DMI4N7110
1/4" x 1-1/2"	100/1,000	DMI4N7115
1/4" x 2"	100/1,000	DMI4N7120
1/4" x 3"	100/Box	DMI4N7130

Stainless Pin Sizes	Qty/Box	Part#
1/4" x 1-1/4"	100/1000	DMI4N7112

Pailed Product ZP	Qty/Pail	Part#
1/4" x 1"	300	DMINZ100300P
1/4" x 1-1/4"	250	DMINZ125250P
1/4" x 1-1/2"	200	DMINZ150200P
1/4" x 2"	150	DMINZ200150P

Description

Drive: Nail / Hammer Pin
 Body Material: Zinc
 Pin Material: Zinc Plated 1022 Steel or 316 Stainless
 Country of Origin: Vietnam
 Substrate/Use: Masonry, Concrete
 Head Height:
 Diameter:

Performance Specifications

Performance in 4000 psi concrete:
 7/8" Embedment depth;
 tension load: 820 lbs, shear load: 1,500 lbs
 1-3/8" Embedment depth;
 tension load: 1,150 lbs, shear load: 1,500 lbs

Aluminator Aluminum Retrofit Drain.

- All aluminum retrofit roof drain
- Heavy duty cast aluminum ring designed for maximum drainage
- Cast aluminum strainer
- Larger stud diameter for increased strength
- Includes ProSeal for a strong mechanical seal to prevent water back-up issues

Options: 2" aluminum combination clamping ring/overflow dam, 2" and 4" aluminum overflow insert, 2-3/4" Aluminum low profile strainer TPO coated flange, PVC coated flange,
 Available in sizes of 3", 4", 5", 6" w/ ProSeal Rubber Seal. Certified to conform with ASME 112.6.4 and CSA B79 standards, 2" & 8" supplied with Tape Seal, Non standard sizes also available - 2.5", 3.5" and 4.5". All supplied with Tape Seal.

STANDARD ALUMINUM FLANGE

SIZE	PART #	SEAL
2"	BALUM2CR	PROSEAL
3"	BALUM3CRP	PROSEAL
4"	BALUM4CRP	PROSEAL
5"	BALUM5CRP	PROSEAL
6"	BALUM6CRP	PROSEAL
8"	BALUM8CRDPM	PROSEAL
2.5"	BALUM200CRS	TAPE SEAL
3.5"	BALUM300CRS	TAPE SEAL
4.5"	BALUM400CRS	TAPE SEAL



HEX HEAD HWH, PFH PHILLIPS FLAT HEAD, CONCRETE SCREW

Carbon Steel Masonry screw type anchor with blue TFL corrosion resistant coating. Designed for medium duty application in C.I.P concrete, hollow core block, solid block, brick or any other masonry material. Drill bit included in each box of 100 pieces. After predrill this anchor cuts threads into concrete and can be removed for adjustment, shimming, leveling and re-driven in to the same hole. Slotted hex head drive popular for non-low profile and non-countersink applications such as attachment of metal junction boxes to masonry. Imported. Popular PFH installations include: wood headers and furring strips to masonry, HVAC strapping to masonry, plywood backer boards to masonry, and exterior insulation systems to masonry. 410 Stainless Steel parts are available in limited HWH sizes.

Product Selection

HWH Blue	Qty/Box	Qty/Ctn	Part#
1/4" x 1-1/4"	100	1000	DMI4HWHB14114
1/4" x 1-3/4"	100	1000	DMI4HWHB14134
1/4" x 2-1/4"	100	1000	DMI4HWHB14214
1/4" x 2-3/4"	100	1000	DMI4HWHB14234
1/4" x 3-1/4"	100	1000	DMI4HWHB14314
1/4" x 3-3/4"	100	500	DMIT3163407
1/4" x 4"	100	500	DMIT3165407

PFH Blue	Qty/Box	Qty/Ctn	Part#
1/4" x 1-1/4"	100	1000	DMI4PFHB14114
1/4" x 1-3/4"	100	1000	DMI4PFHB14134
1/4" x 2-3/4"	100	1000	DMI4PFHB14234
1/4" x 3-1/4"	100	1000	DMI4PFHB14314
1/4" x 3-3/4"	100	500	DMIT3193407

HWH SS	Qty/Box	Qty/Ctn	Part#
1/4" x 1-1/2"	100	1700	DMICSH41415T

One drill bit comes in every 100 count box



Description

Drive: Slotted 5/16" HWH , #3 PFH
Material: C1020
Coating: Blue Ceramic, 720 Hr
Country of Origin: Taiwan, Vietnam
Substrate/Use: Masonry, Concrete
Thread,Point: Hilo, Sharp Point
Thread Diameter: Maj: .250" Min .176"

Performance Specifications

In lbs Ultimate	Pull out	Shear
2000 PSI Concrete 1"	750	900
Light Weight Block	250	620
Medium Weight Block	500	1,000

Corrosion Resistance

ASTM B117 700 Hours.

Description - Stainless Steel Parts

Drive: Slotted 5/16" HWH
Material: 410 Stainless Steel
Coating: Silver DMG85
Country of Origin: Taiwan
Substrate/Use: Masonry, Concrete
Thread,Point: Hilo, Diamond Locator
Thread Diameter: Maj: .251 Min .168"

Corrosion Resistance

TAS114 Appendix E G85 Annex A5:1000 Hour,
ASTM B117 1000 Hour.

PAN*CON XLP

1/4" (#14) diameter shank with a special XLP head taper and flange designed to better fit predrilled fastening points in popular single hung windows. Used as a roofing stress plate to masonry fastener and is also popular for securing 2x dimensional lumber to masonry substrates. Coated with a DMG95 1500 hour tested coating that exceeds Florida and Miami-Dade fastener corrosion resistance requirements. Conveniently packaged in 100 piece boxes that include 1 drill bit. Expect easier installation and better performance from the #2 square drive.

Product Selection

White 014			
Size	Qty/Box/Case	Part#	
#14 x 2-3/4"	100/box/2000	DMIPCX234WW	
#14 x 3-1/4"	100/box/1600	DMIPCX325WW	
Bronze 042			
Size	Qty/Box/Case	Part#	
#14 x 2-3/4"	100/box/2000	DMIPCX234WB	
#14 x 3-1/4"	100/box/1600	DMIPCX325WB	

Code Compliance

Florida Building Code Compliant 1506.6
Miami-Dade County # L24-0311.04



MIAMI-DADE COUNTY
LISTED

#L24-0311.04

Description

Drive: #2 Square
Material: C1020
Coating: DMG95, 1,500 Hour
Country of Origin: Taiwan
Substrate/Use: Masonry, Concrete
Thread,Point: Hilo, Diamond Locator
Head Thickness: .040"
Head Diameter: .436"
Thread Diameter: Maj: .252" Min .185"

Performance Specifications

In lbs Ultimate	Pull out
SPF 2x 1" Pen	475
4000 PSI Concrete 1"	1,134
CMU Masonry Block	927

Corrosion Resistance

TAS114 Appendix E G85 Annex A5:1500 Hour

WEDGE ANCHOR BOLTS

Used for anchoring points in concrete slab construction. Wedge anchor bolts with zinc plating. Assembled with nut and washer. Anchor diameter equals hole diameter. Comes complete with nut and washer ready to use. Collar expander offers optimum contact with masonry. Projections on collar immediately grip concrete. Collar design expands on first turn of the nut. High quality import. Standard parts are Zinc plated carbon steel but these parts are available by special order in HDG, 304, 303 or 316 Stainless Steel.

Product Selection

Import ZP Sizes	Qty/Box	Part#
1/2" x 5-1/2"	125	DMI4A12512Z
1/2" x 7"	125	DMI4A12700Z
1/2" x 8"	25/50	STB250812
1/2" x 8-1/2"	125	DMI4A12812Z
5/8" x 3-1/2"	125	DMI4NFC725
5/8" x 4-1/2"	100	DMI4WA58412Z
5/8" x 5"	100	DMI4WA58500Z
5/8" x 6"	100	DMI4WA58600Z
5/8" x 8-1/2"	100	DMI4WA58812Z
3/4" x 7"	40	DMI4WA34700Z
3/4" x 8-1/2"	40	DMI4WA34812Z

Stainless Sizes	Qty/Box	Part#
3/8" x 3-3/4"	50	STB2373346SS
3/8" x 5"	50	STB2375004SS
3/4" x 7"	10	STB2757004SS



Description

Material: Carbon Steel or 304 Stainless
Plating: Zinc Plated to ASTM B533-78
Country of Origin: China
Substrate/Use: Masonry, Concrete

Performance Specifications

Tension (Embedment 4"	6"	6-1/2")	
In lbs Ultimate 1/2"	5/8"	3/4"	
2000 PSI Concrete	5,950	8,117	11,450
4000 PSI Concrete	8,679	13,358	16,270
6000 PSI Concrete	11,019	17,657	21,153

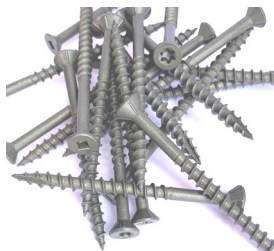
Shear (Embedment 4"	6"	6-1/2"
In lbs Ultimate 1/2"	5/8"	3/4"
2000 PSI Concrete 8,042	8,500	18,022
4000 PSI Concrete 8,050	11,085	17,585
6000 PSI Concrete 10,051	13,163	21,849

Compliance

Zinc Plating complies with QQ-Z-325-C and ASTM B633-78 requirements, Meets or exceeds U.S. G.S.A. FF-S-325 Group II, Type 4, Class 1

PREMIUM DECKING FASTENERS (T-25BAGGED)

Decking screws are used in wood to wood applications such as 1" x 4" to plywood. Other popular uses include installation of tile and shake roofing, exterior fencing and exterior wood deck structures. Premium decking screws have a countersink style bugle head with a T-25 6 lobe drive packaged 250 pieces per bag or a #2 square drive, packaged in bulk carton. Green longlife ceramic coating for exterior performance.



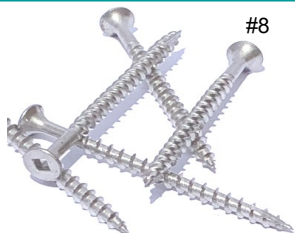
Bulk Packaged Square Drive Parts

<u>Stock</u>	<u>Sizes</u>	<u>Drive</u>	<u>Qty/Box</u>	<u>Part#</u>
#7 x 1-5/8"	SQ2	5,000	DMIAEGDS7158S2B	
#8 x 2"	SQ2	3,500	DMIAEGDS8200S2B	
#9 x 2-1/2"	SQ2	2,500	DMIAEGDS9250S2B	
#9 x 2-1/2"	T25	2,000	DMI4DA9250T25B	
#9 x 3"	SQ2	2,000	DMIAEGDS9300S2B	
#9 x 3"	T25	1,500	DMI4DA9300T25B	
#10 x 3-1/2"	SQ2	1,000	DMIAEGDS10312S2B	
#10 x 4"	SQ2	750	DMIAEGDS10400S2B	

305 STAINLESS STEEL TILE FASTENERS / 305 STAINLESS STEEL DECKING FASTENERS

When you need true corrosion resistance for applications such as clay or concrete tile installation into wood substrates, choose our full 305 stainless steel decking screws. Square flat head #2 Sq drive, #8 x 2" and 2-1/2" feature a TP-17 cutpoint.

Available in full box quantities only.



Stock	Sizes	Qty/Box	Part#
#8 x 2"		3,000	DMI1SS08200
#8 x 2-1/2"		2,500	DMI1SS08212
#10 x 2-1/2"		2,000	DMI1SS10212
#10 x 3"		1,500	DMI1SS10300

Special Order Sizes	Qty/Box	Part#
#8 x 1-1/4"	5,000	DMI1SS08114
#8 x 1-5/8"	4,000	DMI1SS08158
#10 x 3-1/2"	1,000	DMI1SS10312

WOOD TO METAL FASTENERS

XLP WTM SD3 with extra low profile XLP wafer head for installing plywood, OSB, MDF and dimensional lumber to metal deck and steel up to 14 ga in thickness. Silver DMG85 w/wings, white DMG85 without wings.

WTM SD4 is designed to install dimensional lumber (2x) to steel substrates up to 1/4" thick. Breakaway wings and countersink head allows for a flush surface after installation. Green DMG85 coating is designed for use with pressure treated lumber. 250/bag

Product Selection

XLP WTM to metal up to 6 ga SQ2, SD3			
Size	Qty/Box/Case	Part#	
#10-16 x 1-7/8"	2,000	DMIPXLP10178SD3SD	
#10-16 x 1-7/8"	2,000	DMIPXLP10178SD3WD	

WTM from 14 ga to 1/4" SQ3, SD4 Green			
Size	Qty/Box/Case	Part#	
#14-20 x 2-3/4"	1,500	DMIPXLP14234SD4WWD	
#14-20 x 3-1/4"	1,000	DMIPXLP14314SD4WWD	



Description

Material: C1022 Carbon Steel
Country of Origin: Taiwan

Size	#10-16 SD3	1/4-20 SD4
Drive:	SQ2	SQ3
Coating:	Silver DMG85	Green DMG85
Steel Substrate:	.059"-.210"	14 ga - 1/4"
Thread, Point:	16 TPI, SD3	20 TPI, SD4
Thread Major Diam:	.187"	.245"
Thread Minor Diam:	.142"	.221"
Head Diameter:	.455"	.472"
Head Type:	Wafer	SFH

Corrosion Resistance
ASTM B117 1000 Hour

LIGHT TRANSMITTING PANEL FASTENERS FOR POLYCARBONATE OR FIBERGLASS PANELS



LIGHT TRANSMITTING PANEL TO WOOD STAINLESS SCREW

Full 304 Stainless Steel protection with the added protection of DMG85 coating. Special 3/4" diameter cupped style washer for standard applications to wood substrates. Designed to meet DMI and Sunsky installation guidelines. Pre-drill of polycarbonate panel required.



LD LIGHT TRANSMITTING PANEL TO WOOD CARBON STEEL

Carbon Steel that is zytec coated for corrosion resistance. Winged fastener that performs thermal poly predrill on 0.8mm and 1.0mm sheets. Designed for dimensional lumber substrate, mill finish only.



LIGHT TRANSMITTING PANEL TO STEEL STAINLESS SCREW

Full 304 Stainless Steel protection with the added protection of DMG85 coating for resistance to dissimilar metal reactions in aluminum substrates. Special 3/4" diameter cupped style washer for standard applications to steel substrates. Pre-drill substrate and panel.



LIGHT TRANSMITTING PANEL TO STEEL FBC FASTENER

Oversized #14 fasteners with an oversized 304SS 1/8" EPDM x 1.125" diameter washer. This fastener is for installation of translucent panels to light to medium gauge metal substrate up to 8 ga steel to meet Florida Building Code Approval installation guidelines. Pre-drill of polycarbonate panel required.



TRANSLUCENT PANEL TO PC PANEL OR STEEL PANEL TO PC PANEL OVERLAP FASTENER - SS GROMMET SEAL

Stainless Steel 304 with EPDM grommet. Used for panel overlaps of polycarbonate and fiberglass panels. Hex head machine screw with rubber grommet that seals around top and bottom of panel penetrations. Predrill required for installation.

3/8" Drive head with sealing washer.

Available Sizes	Qty/Box	Part#
14 x 3/4" TPA 3/4C	1,000	DMIREPL14034SSA
14 x 1-1/2" TPA 3/4C	1,000	DMIREPL14150SSA
14 x 2-1/2" TPA 3/4C	1,000	DMIREPL14250SSA

250 PIECES PER BAG

5/16" Drive head with Bonded sealing washer.

Available Sizes	Qty/Jar	Part#
#9 x 1-3/16"	95 pcs	675454309520

Available in 1 lb jars or 20 lb Keg box

3/8" Drive head with sealing washer.

Available Sizes	Qty/Box	Part#
14 x 1-1/2" TPB 3/4C	1,000	DMIREPL14150SSB
14 x 2-1/2" TPB 3/4C	1,000	DMIREPL14250SSB

250 PIECES PER BAG
or by the piece

3/8" Drive head with Bonded sealing washer.

Available Sizes	Qty/Box	Part#
1/4-14 x 1-1/2" SD3	1,000	DMIPSD14150W114

250 PIECES PER BAG
or by the piece

Sizes	Qty/Box	Part#
1/4" x 1"	2500	DMI410F100NWESN

By the case or by the piece

UNWASHERED HEX (HWH) HEAD SELF DRILLING FASTENERS



STEELZIP HWH ECONO SELF DRILLING FASTENERS

Self drill fasteners for metal to metal applications such as ductwork assembly, metal framing, gusset plate and steel tube fastening. The SteelZIP Econo line of self drilling fasteners are imported from Taiwan and have a zinc plating. Available in mill finish only. Available for order in full box quantities only.

Product Selection

Hex Head (HWH) Light to Medium Gauge

Size	Point	Qty/Box	Part#
#8 x 1/2"	SD2	10,000	DMI4HWKZ08012
#8 x 3/4"	SD2	10,000	DMI4HWKZ08034
#10 x 3/4"	SD3	6,000	DMISDNH10034
#10 x 1"	SD3	5,000	DMI4HWKZ10100
#10 x 2"	SD3	2,000	DMI4HWKZ10200
#12 x 3/4"	SD3	5,000	DMI4HWKZ12034
#12 x 1"	SD3	3,000	DMI4HWKZ12100
#12 x 1-1/2"	SD3	3,000	DMI4HWKZ12112
#14 x 1"	SD3	3,000	DMI4HWKZ14100
#14 x 1-1/2"	SD3	2,000	DMI4HWKZ14112
#14 x 2"	SD3	1,000	DMI4HWKZ14200

Heavy Ga Applications up to 1/2" thick steel

Size	Point	Qty/Box	Part#
#12 x 1-1/4"	SD5	2,000	DMI4HWKZ121145
#12 x 1-1/2"	SD5	2,000	DMI4HWKZ121125
#12 x 2"	SD5	2,000	DMI4HWKZ122005

Description

Drive: Hex 5/16", Hex 3/8"
Material: C1022
Point: #10 & #12 SD3, #14 SD3, #12 SD5
Finish: E Zinc Plated
Substrate/Use: SD2/SD3 Steel .036"-.210"
SD5 Steel 0.12" to 0.500"
Thread: #10-16, #12-14 SD3, 1/4-14 SD3, #12-24 SD5
Thread Diameter #10: Maj: .186" Min: .157"
Thread Diameter #12: Maj: .214" Min: .186"
Thread Diameter #14 (S3): Maj: .246" Min: .215"
Thread Diameter #12 (S5): Maj: .214" Min: .186"
Country of Origin: Taiwan, China

Performance Specifications

Pull out / Withdrawal Values: (lbs ultimate)
Substrate #8 #10 #12 (SD3) #14
16 ga 705 786 842 910



STEELZIP CTD & IMPAX SD COATED HWH SELF DRILLING SCREWS

Used for attachment of metal to metal applications such as steel framing and hat channel and metal deck attachment. Similar to the SteelZIP Econo self drill fasteners with the added corrosion protection of thicker galvanizing and VistaCoat or DMG85 corrosion resistant coatings. Most sizes of coated fasteners also come bagged in 250 count bags for easy distribution. B=Bulk

Hex Head (HWH) Light to Medium Gauge

Size	Point	Qty/Box	Part#
#8-16 x 3/4"	SD2	10,000 B	DMISDNHC834 *
#10-16 x 3/4"	SD3	5,000	DMI2793362 *
#12-14 x 1"	SD3	2,500	DMI2794234 *
#12-14 x 1-1/4"	SD3	2,500	DMI2795053 *
#12-14 x 1-1/2"	SD3	2,500	DMI2796234 *
#12-14 x 2"	SD3	2,000	DMI2796909 *
1/4-14 x 7/8"	SD1	2,500	DMI2797805 Lap *
1/4-14 x 1"	SD3	2,500	DMI2798553 *
1/4-14 x 1-1/4"	SD3	2,000	DMI2798810 *
1/4-14 x 1-1/2"	SD3	2,000	DMI2798973 *

Hex Head (HWH) Heavy Gauge up to .500"

Size	Point	Qty/Box	Part#
#12-24 x 1-1/4"	SD5	2,500	DMI2795839 *
#12-24 x 1-1/2"	SD5	2,500	DMI2796618 *
#12-24 x 2"	SD5	2,000	DMI2783126 *
1/4-20 x 3"	SD5	1,000B	DMI21356393 *
1/4-20 x 4"	SD5	1,000B	DMI21356395 *
1/4-20 x 5"	SD5	600 B	DMI21356396 *
1/4-20 x 6"	SD5	500 B	DMI21356398 *
1/4-20 x 7"	SD5	500 B	DMI21356399 *
1/4-20 x 8"	SD5	500 B	DMI21356400 *

Description

#12-14 SD3 Point: SD3
Substrate/Use: Steel 0.059" - 0.210" Thick
Thread: 14 TPI
Thread Diameter: Maj: .212" Min: .155"

#12-24 SD5 Point: SD5
Substrate/Use: Steel 0.210" - 0.500" Thick
Thread: 24 TPI
Thread Diameter: Maj: .212" Min: .192"

Performance Specifications

	#12-14 SD3	#12-24 SD5
Torsional:	92 in lbs.	100 in lbs.
Shear :	2,080 lbs avg.	2,200 lbs avg
Tensile:	2,900 lbs avg.	3,200 lbs avg
Pull out / Withdrawal Values: lbs ultimate		
12 ga	1,540	12 ga 1,300
14 ga	920	3/16" 3,200
16 ga	680	1/4" 3,200

Code Compliance

*Florida Building Code Compliant 1506.6

STEELZIP RETRO-DRILLER Used for attachment of metal to metal applications such as steel framing and hat channel and metal deck attachment when a longer than typical fastener is needed. There is a 1/2" un-threaded section beneath the HWH head of this fastener. This smooth shank section is designed to combat panel jacking/ thread riding in hat channel applications. The complete fastener is electro zinc plated and then coated with our DMG85 Silver 1,000 hr protective barrier coating. #3 drill point will self drill and tap steel thicknesses up to 0.210".

Size	Qty/Box	Part#
1/4-14 x 3"	1,000	DMI4SDNHC14300R
1/4-14 x 4"	750	DMI4SDNHC14400R



304 STAINLESS STEEL BI-METAL SD

The fused Bi-Metal self drilling point allows you to achieve the corrosion resistance of austenitic 304 stainless steel without having to pre-drill your fastener. The head and shank of the screw is austenitic 304 series stainless steel. A 25 year warranty against red rust on head and body of screw is available. LSC spring clip drivers are suggested. Available to be painted.

100 Pieces per box	Drill Point	Part#
#10 x 7/8"	SD1	DMISDNHSSD110078
#10 x 1-3/8"	SD1	DMISDNHSSD10435
#10 x 2-3/8"	SD1	DMISDNHSSD10438
#10 x 3-1/16"	SD1	DMISDNHSSD18235
#12 x 7/8"	SD1	DMISDNHSSD10451
#10 x 3/4"	SD2	DMISDNHSSD12662
#12 x 1"	SD2+	DMISDNHSSD10452
#12 x 1-1/2"	SD2+	DMISDNHSSD15698
#12 x 1-5/8"	SD2+	DMISDNHSSD10455
#12 x 2-1/4"	SD2+	DMISDNHSSD10457
#12 x 2-3/8"	SD2+	DMISDNHSSD16524
#12 x 1-5/8"	SD5	DMISDNHSSD512158
#12 x 2-3/8"	SD5	DMISDNHSSD16342

Description

Drive: Hex 5/16"
Material: 300 Stainless Body, CS Point
Finish: E Zinc Plated
Substrate/Use: SD2+ Steel .06"-.157"
SD5 Steel .075" to .505"
Thread Diameter #10: Maj: .186" Min: .157"
Thread Diameter #12: Maj: .214" Min: .186"
Country of Origin: Poland, Czech Republic

HWH No Washer	Drill Point	Part#
1/4-14 x 1"	SD3	DMI21558126
1/4-14 x 1-1/2"	SD3	DMI21558128
1/4-14 x 2"	SD3	DMI21558129
1/4-20 x 1-1/8"	SD4	DMI21558132
1/4-20 x 1-1/2"	SD4	DMI21558133
1/4-20 x 2"	SD4	DMI21558134
1/4-20 x 2"	SD5	DMI21558130
1/4-20 x 4"	SD5	DMI21558131

#12 Performance Specifications

Torsional: 70 in-lbs
Tensile: 2,743 lbs
Shear: 2,149 lbs
Pull out / Withdrawal Values:
12 ga 1,282 lbs ult
14 ga 908 lbs ult
16 ga 703 lbs ult

Replacement Fasteners Metal to Wood (Longlife Lifetime Head)

Replace ↓ with →	WoodZIP SCAMP Screw 5/16" HWH (Wood, Concrete with Predrill)	Qty/Box	Part# Mill
#8,#9,#10	Stainless Cap Head #12 x 3/4" SCAMP	2,500	DMI4SSC12034M
#8,#9,#10	#12 x 1" SCAMP	2,500	DMI4SSC12100M
#8,#9,#10	#12 x 1-1/2" SCAMP	2,000	DMI4SSC12150M
#8,#9,#10	#12 x 2" SCAMP	1,500	DMI4SSC12200M
#8,#9,#10	#12 x 2-1/2" SCAMP	1,000	DMI4SSC12250M
#8,#9,#10	#12 x 4" SCAMP	1,000	DMI4SSC12400M
#12,#14	#17 x 1" SCAMP	1,500	DMI21643454
#12,#14,#17	#20 (5/16") x 1" SCAMP (3/8h)	2,000	DMI4SSC516100M (3/8h)
#12,#14,#17	#20 (5/16") x 2" SCAMP (3/8h)	1,000	DMI4SSC516200M (3/8h)
#17, .343", .351"	#28 (3/8") x 1" SCAMP (3/8h)	1,000	DMI4SSC38100M (3/8h)


Replacement Fasteners Metal to Wood (Econo No Warranty)

Replace ↓ with →	WoodZAC Tapper Screw 3/8 HWH (Wood, *steel with pre-drill)	Qty/Box	Part# Mill
#8,#9,#10	Size #14 x 1" ZAC Tapper	1,500	DMI2A4395FMF
#8,#9,#10	#14 x 1-1/2" ZAC Tapper* AB	1,500	DMI2A4485FMF
#8,#9,#10	#14 x 1-1/2" ZAC Tapper A	1,500	DMI2A4485FMF-TPA
#8,#9,#10	#14 x 2" ZAC Tapper	1,000	DMI2A4513FMF
#12,#14,1/4	#17 x 1" ZAC Tapper *	1,500	DMI2A6045LFF
#12,#14,1/4	#17 x 1-1/2" ZAC Tapper*	1,000	DMI2A8066LFF


Replacement Fasteners Metal to Wood (Econo No Warranty)

Replace ↓ with →	Direct*Seal MP Screw 1/4 HWH (wood, steel deck, concrete)	Qty/Pail, /Case	Part#
#8,#9,#10	Size #12 x 3/4"	400/Pail, 4 Pail/Case	DMI3DSF12034DP1WT
#8,#9,#10	#12 x 1-1/2"	300/Pail, 4 Pail/Case	DMI3DSF12150DP1WT
#8,#9,#10	#12 x 2-1/4"	150/Pail, 4 Pail/Case	DMI3DSF12214DP1WT
#8,#9,#10	#12 x 3-3/4"	700/Pail, 1 Pail Loose	DMI3DSF12334DP1WT


Replacement Fasteners Metal to Wood (Econo No Warranty)

Replace ↓ with →	Woodgrip Tapper Screw 1/4 HWH (Wood, * Steel with pre-drill)	Qty/Box	Part# Mill
#8,#9,#10	Size #14 x 1" Tapper MPA	2,500	DMI2V3321GBF
#8,#9,#10	#14 x 1-1/2" Tapper MPA	2,000	DMI2V3438GBF
#8,#9,#10	#14 x 2" Tapper MPA	1,500	DMI2V3531GBF
#8,#9,#10	#14 x 2-1/2" Tapper MPA	1,000	DMI2V3597GBF


Stainless Steel Replacement Fasteners Metal to Wood

Replace ↓ with →	WoodZIPSS TAPPER Screw 3/8 HWH (Wood, * Steel with pre-drill)	Qty/Box	Part# Mill
#8,#9,#10,#12	Size #14 x 1-1/2" PC2W REP	1000/bx	DMIREPL14150SSA
#8,#9,#10,#12	#14 x 2-1/2" PC2W REP	1000/bx	DMIREPL14250SSA
#8,#9,#10,#12	#14 x 2-1/2" Flat Washer	1000/bx	DMI4HHASS1425034


Replacement Fasteners Metal to Metal (Longlife Lifetime Head)

Replace ↓ with →	SteelZIP SCAMP Self Drill and Tapping Screws 5/16" HWH	Qty/Box	Part# Mill
#8,#10,#12 SD3	Size #14 x 1-1/4"	SD3 2,000	DMI4SSCSD314125M
#8,#10,#12 SD5	#14 x 1-3/4"	SD5 1,000	DMI4SSCSD514134M
#12,#14,#17	#20(5/16") x 1-1/4"	SD3 1,000	DMI4SSCSD3516114M (3/8h)
#12,#14	#17 x 1"	TPA 1,500	DMI21643454
#17, .343", .351"	#28 (3/8") x 1"	TPA 1,000	DMI4SSC38100M (3/8h)


Replacement Fasteners Metal to Metal (Econo, No Warranty)

Replace ↓ with →	ZAC Self Drill and *Tapping Screws Screw	Qty/Box	Part# Mill
#8,#10,#12 SD3	Size #14 x 1-1/4"	SD3 2,000	DMI2S5211FMF
#8,#10,#12 SD3	#14 x 1-1/2"	SD2 1,500	DMI2S5287FMF
#12,#14	#17 x 1" ZAC TapperTPA*	1,500	DMI2A6045LFF


Replacement Fasteners Metal to Metal (Econo, No Warranty)

Replace ↓ with →	Impax and SteelZIP Coated Self Drill and *Tapping Screws Screw	Qty/Box	Part# Mill
#8,#10,#12 SD3	Size #14 x 1-1/4"	SD3 2,000	DMI2S5201GBF/DMI2798777
#8,#10,#12 SD3	#14 x 1-1/2"	SD3 2,000	DMI2798957
#12,#14	#17 x 1"	TPA * 2,000	DMI2A6041KJF
#12 SD5	1/4-20 x 3"	SD5 1,000	DMI21356420
#8,#10,#12 SD3	#14 x 1-1/2" W1-1/8"W SD3	1,000	DMIPOS14150W114 - Large Washer


Stainless Steel Replacement Fasteners Metal to Metal

Replace ↓ with →	304 STAINLESS TPB TAPPER Screw 3/8 HWH (Steel with pre-drill)	Qty/Box	Part# Mill
#12	Size #14 x 1-1/2"	1000/bx	DMIREPL14150SSB
#12	#14 x 2-1/2"	1000/bx	DMIREPL14250SSB



BUTYL SEALANT TAPES MEMBRANE ROLLS



Butyl*Roll PREMIUM BUTYL TAPE SEALANT ROLL

Designed for sealing and preventing the entry of moisture, air and dust into metal lap joints, Butyl*Roll has expanded to serve a wide range of applications. Unlike tube sealants, Butyl*Roll provides a consistent shaped bead, and is quick and easy to apply. Meets or exceeds the following specifications: MIL-C-18959B TIICB, TT-C-1996A TIICB, AAMA 904.3-92 and AAMA 807.3-92 and is Made in the U.S.A.

ADVANTAGES:

A premium quality sealant roll made of 100% solids, highly rubbery, sticky and easy to apply. It shows excellent performance over a wide range of temperatures and conditions. Excellent adhesion to Galvalume and Kynar 500, non-staining and permanently flexible. Butyl*Roll is mold and mildew resistant. Unlike many of the competitors Butyl*Roll is **Approved for use on Polycarbonate Panels**.

Stock Sizes	Qty/Box	Part#	Representation of profile
Single bead styles			
3/32 x 3/8" x 45'	40	DMBT3323845	
3/32 x 1/2" x 45'	32	DMBT3321245	
3/32 x 3/4" x 45'	24	DMBT3323445	
3/32 x 1" x 45'	20	DMBT332145	
1/8" x 1" x 45'	14	DMBT18150	
1/8" x 2" x 50'	4	DMBT18250	
Double bead styles			
3/16 x 7/8" x 40'	10	DMBT31678D	
Triple bead styles			
3/16 x 7/8" x 25'	14	DMBT31678M	
3/16 x 2-1/2" x 20'	6	DMBT3162122	



MADE IN
USA

3/8"
Shown

BT-13 BUTYL TAPE SEALANT ROLL

BT-13 / Butyl*Roll TP-13 is the second DMI formularization of elastomeric butyl tape formulated for use in the metal building industry. BT-13 is a non-drying compound that does not stain and remains permanently flexible. In addition to providing superb adhesion to a variety of substrates, this material also prevents or reduces galvanic corrosion, electrolysis, noise transmission, and thermal transfer vibration. BT-13 is different than standard Butyl*Roll in that it offers more 200% more elongation and a slightly stringier consistency. BT-13 is **not** approved for use on Polycarbonate Panels.

ADVANTAGES:

BT-13 is mold and mildew resistant.
Service Temp -40degF to 180 degF
ASTM D412 Elongation 1000%
18 month shelf life.
Made in the U.S.A.



MADE IN
USA

Single Bead

Size	Box Qty	Part #
3/32" x 3/8" x 45'	16	DMBT133323845
3/32" x 3/8" x 45'	24	DMBT13332384524
3/32" x 1/2" x 45'	16	DMBT133321245
3/32" x 1/2" x 45'	24	DMBT13332124524
3/32" x 3/4" x 45'	16	DMBT133323445
3/32" x 1" x 45'	14	DMBT13332145

Double Bead

Size	Box Qty	Part #
3/16" x 7/8" x 40'	14	DMBT1331678D

Triple Bead

Size	Box Qty	Part #
3/16" x 2-1/2" x 20'	6	DMBT133162122

DMI T3 ECONO BUTYL TAPE - BLACK TAPE

T3 Econo butyl tape is the 3rd formularization of elastomeric butyl tape formulated specifically for use in the HVAC, curtain wall & sheet metal industry. This tape has more fillers than typical Butyl*Roll tapes allowing it to be our price leader. The color is black

ADVANTAGES:

Low cost, American Made
Service Temp -40degF to 180 degF, Tensile Strength 12-14 PSI, Shelf Life 2 yrs.
ASTM D412 Elongation 600%, Odorless.

MADE IN
USA



Single Bead

Size	Box Qty	Part #
3/32" x 3/4" x 50'	14	DMBTERVTB33203450
3/32" x 1" x 35'	16	DMBTERVTB33210035

Multi Bead

Size	Box Qty	Part #
3/16" x 7/8" x 20' T	16	DMBTERVTB31607820
3/16" x 2-1/2" x 20'	8	DMBTERVTB31625020

Sold in full pallets only, 2 pallet minimum for production, 24 boxes per pallet, Made to order.

DMI30 SSR SEALANT NON-SKINNING STANDING SEAM SEALANT

DMI30 is a non-hardening, self-healing sealant that provides superb adhesion in all conditions; including extreme temperatures and moisture levels. DMI30 does not string during application, and exhibits outstanding webbing and cut-off characteristics. DMI30 is intended for concealed application away from sunlight. This material remains permanently tacky and flexible after curing, and provides a long-lasting and resilient seal.

Packaging: (30) 10.1oz plastic tubes / case, Part# N104001TDMI



Product Uses: DMI30 adheres to a wide variety of substrates, and as such serves as a trusted sealant in a multitude of markets. In the metal building industry, DMI30 is often used as a standing seam sealer. It adheres to painted metals, Zincalume, Galvalume, and Kynar 500. DMI30 is also used as a joint sealant in foam glass applications. Not for applications that expose the sealant to sunlight.

DMI PIPE FLASHINGS FOR METAL ROOFING - UNIVERSAL ROUND BASE

Used to waterproof roof penetrations in metal roofing panels. Made of pliable rubber with a 20 year limited warranty. Our flashings feature an aluminum fastening ring with grooved sealant holding base that is adjustable to most common roof pitches. These parts are 100% North American Made. The #3 pipe flashings have a UPC Approval and Florida Building Code.

Standard (STD) flashings are made of Light Gray E.P.D.M. rubber with an application temperature range of -67 degF to 212 degF

High Temperature (High Temp) flashings are made of gray or red silicone with an application temperature range of -101 degF to 437 degF.

Size	Fits Pipes	Base	Qty/Box	STD Grey
#1	0.25" - 2.5"	4.75"	15	DML1GR
#2	1.75" - 3"	6.25"	15	DML2GR
#3	0.25" - 5"	7.75"	15	DML3GR
#4	3" - 6.25"	9.25"	10	DML4GR
#5	4.25" - 7.75"	10.5"	10	DML5GR
#6	5" - 9"	13"	10	DML6GR
#7	6" - 11"	14.5"	10	DML7GR
#8	7" - 13"	16.5"	5	DML8GR
#9	9" - 19"	25-1/4"	5	DML9GR
#10	12" to 28"	34" square	5	DML10GS

STD Black
DML1BR
DML2BR
DML3BR
DML4BR
DML5BR
DML6BR
DML7BR
DML8BR
DML9BR

High Temp Grey
DML1HTG
DML2HTG
DML3HTG
DML4HTG
DML5HTG
DML6HTG
DML7HTG
DML8HTG
DML9HTG
DML10HTR

High Temp Red (Special order)
DML1HT
DML2HT
DML3HT
DML4HT
DML5HT
DML6HT
DML7HT
DML8HT
DML9HT

#3 COLORS PIPE FLASHINGS FOR METAL ROOFING

Now available in 14 colors to complement popular metal roofing panel color choices.

Used to waterproof roof penetrations in metal roofing panels. Made of pliable rubber with a 20 year limited warranty. Our flashings feature an aluminum fastening ring with grooved sealant holding base that is adjustable to most common roof pitches. The #3 fit pipes 1/4" up to 5" in diameter and have an 8" round base. These pipe flashings have a UPC Approval and Florida Building Code Approval.

Color
Black
Bright Red
Cocoa Brown
Charcoal
Copper
Dark Blue
Dark Bronze
Dark Green
Light Blue
Medium Bronze
Tan
Taupe / Clay
Terracotta
White

Part#
DML3BR
DMLRD301BR
DMLRD301BN
DMLRD301NG
DMLRD301CP
DMLRD301DB
DMLRD301324
DMLRD301DG
DMLRD301LB
DMLRD301537
DMLRD301TAN
DMLRD301422
DMLRD301TC
DMLRD301WT

DMI SQUARE BASE RETROFIT FLASHINGS

Designed to waterproof electrical conduit, masts, service poles and collared pipe penetrations through metal roofing panels. Includes corrosion resistant band and rivets for fastening. Accurate side markings make it easy to cut for a specific size. Light gray, square base E.P.D.M. rubber construction with UPC approval and 20 year warranty. Standard color is gray, however these parts are available by special order in black E.P.D.M. or red high temp silicone. 100% North American Made.

FL 28400.3 R1

GREY E.P.D.M.

Size	Fits	Base	Qty/Box	Part#
#101	1/2" - 4"	8"	5	DML101G
#201	4" - 9-1/4"	14"	5	DML201G
#301	9-1/4" - 16-1/4"		5	DML301G

RED HIGH TEMP SILICONE

Size	Fits	Base	Qty/Box	Part#HT
#102	1/2" - 4"	8"	5	DML102H
#202	4" - 9-1/4"	14"	5	DML202H
#302	9-1/4" - 16-1/4"		5	DML302H

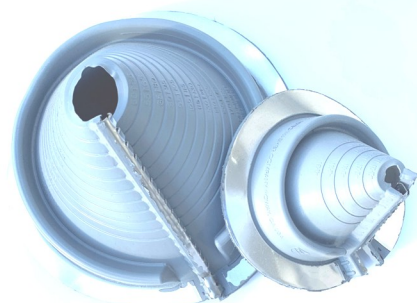
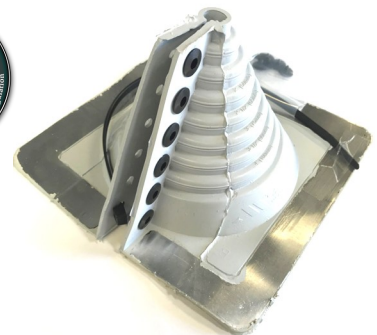
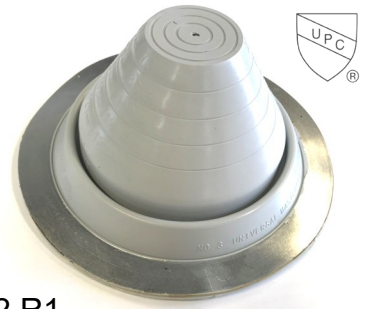
DMI ROUND RETROFIT FLASHINGS - (Zipperboot)

Designed to waterproof electrical conduit, masts, service poles and collared pipe penetrations through metal roofing panels. Stainless steel fastening teeth interlock with the rubber for fastening at the split. E.P.D.M. rubber construction with UPC approval and 20 year warranty. Standard gray to be used on mill finish metal roofing. #802 are available for special order in black EPDM or a white high temperature silicone.

Size	Fits	Base	Qty/Box	Part#GR
*#1	1/4" - 2-3/4"	6-3/10"	10	DM801G
*#2	2" - 7-1/4"	10-3/4"	10	DM802G
*#3	3-1/4" - 10"	14-1/2"	5	DM803G

Size	Fits	Base	Qty/Box	Part#WT
#802	2" - 7-1/4"	10-3/4"	5	DM802W

#802 White High Temp is not North American Made and is made of white silicone <500 deg F.



SIDE WALL FLASHING

This low profile flashing is available in standard or retrofit (as shown). This is designed to flash in pipe or wire penetrations in metal sidewall penetrations. Available in Gray or Black EPDM in standard and white silicone in a high temperature retrofit version.

Packaged 10 pcs/box
Special order / Made to order.



MR VENT-FLASH

Designed to flash turbine vents, roof exhaust fans and goose neck vents. Inside opening 11.75" x 11.75" outside base is 24" x 24". Adaptable base designed to mold to most panel configurations and roof pitches. Made of UV protected EPDM that has an application temperature range up to 212 degF. Standard parts are gray.

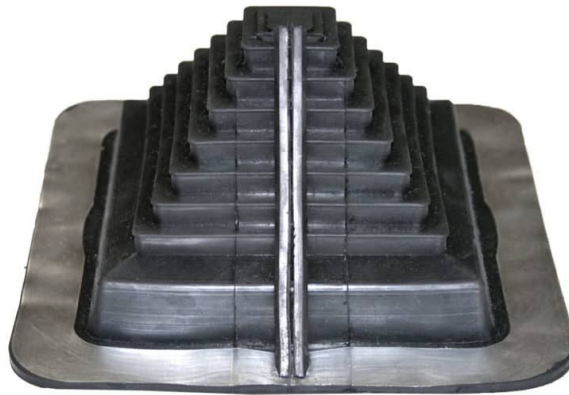
Packaged 1/box , Part# DMLVFLG24



MULTI-FLASH SQUARE VENT , SQUARE PIPE BOOT

Fits standard square pipes and vents from 3/4" to 5" and retrofit applications for 1-1/2" up to 4". High quality black E.P.D.M. with 20 year warranty. Adaptable base and no hassle stainless steel gripper to secure in retrofit applications. Square base.

Packaged 10 pcs/box
Part# DMLMFSQ101BA

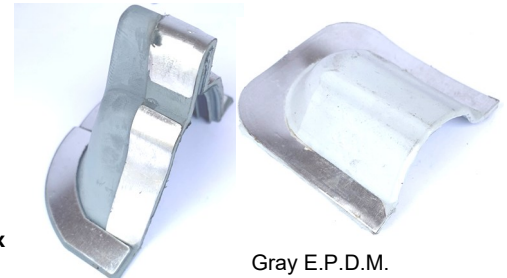


CAP FLASHINGS MASTERCAP & RIBCAP

Designed to seal up-slope profile ends. Popular applications such as: HVAC curb penetrations, skylight curb penetrations and chimney flashing points.

The MASTERCAP1 measures 3" high x inner Depth of 2" and Base width of 4-1/2" will accommodate many standing seam metal roofing profiles from 1-1/4" to 3" and popular commercial roofing panels with an 1-1/4" to 2" tall rib such as MR12 / R Panel / PBR Panel. (Old Part#DSLMO101BA/GA, DMLMC051/MC101NG) *** New Part number and packaging, **Packaged 20 pcs per box Gray part# MC101BA**

THE RIBCAP is designed specifically for 3/4" rib profile ends. **Packaged 10 pcs per box Part# DMRIBCAP** Size: 3/4" overall height x inner wall width 2" inner depth of 2-3/4".



Gray E.P.D.M.

LIGHTNING ROD PIPE FLASHING

Designed to weatherproof lightning rod or wire penetrations through metal roofing panels or ridge caps. Easy to use, with the perfect low profile design. Also used in some solar stand applications on metal roofing. Packaged 40 pieces per box. Imported. Fits 0" to 1-3/8" Part# DM1RRG



END CAP FLASHING

Constructed of gray E.P.D.M. with a 20 year warranty. Applications include skylight, cupola and ridge ends. Flexible, corrosion resistant aluminum base conforms large standing seam and trapezoidal metal roof panels. Imported. 10 pcs per box

Part# DM1DC1



FIX-A-FLASH MASTERFLASH

Solution for smaller pipes with an oversized hole in your metal panel, and solution for overflash application of old pipe flashings. E.P.D.M. Black 20yr warranty rubber and adaptable base. Fits 0" to 15" pipes with a 19-1/2" base. Buy American Plan.

5 pcs per box Part# FF851BC



MULTI-PORT MASTER FLASH™

Easy to use 4 in 1 flashing, up to 4 cables or wires per flashing. Stainless steel gripper to secure in retrofit applications. Accommodates four 1/4" lines and 1 pipe 1/4" - 2-3/4". B.A.P.

Black E.P.D.M.
10/box
DMLMP101BA

Red high temp
10/box
DMLMP102RA



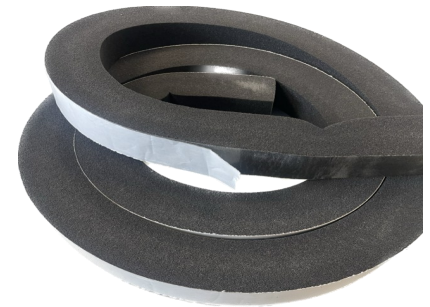
DIRECT*SEAL LONG LIFE UNIVERSAL CLOSURE ROLLS

Universal closure rolls designed to seal gaps in metal roofing, window and door installations. When compressed, Direct*Seal will become a water, pest, wind, and dust barrier in valley, hip and other panel to panel or panel to trim applications. Direct*Seal can also be used to close in gaps around windows and doors to help increase the energy efficiency of your building. Direct*Seal comes fully expanded in a single wrapped roll and is compressed at time of application.

Application Guide: Compression of the product is required to achieve the following:
 25% Compression required for dust & sound protection, pest resistance and thermal insulation.
 50% Compression required for wind, air and rain protection up to 20 psf.

Advantages:

- UV protected foam with no asphalt content (non-streaking, non-staining)
- Designed for any pitch from 2/12 to 20/12
- Will not scratch panel finishes
- Easy to apply with a full width peel back adhesive strip



Available Sizes	Qty/Box	Part#	MADE IN USA
1" x 1" x 20'	20	DDS101020	
1-1/2" x 1-1/2" X 20'	10	DDS151520	
2" x 2" x 10'	10	DDS202010	

BG1 EXPANDING UNIVERSAL CLOSURE ROLLS

Precompressed, self-expanding polyurethane foam with acrylate dispersion impregnation. Used for sealing joints and seams in metal panels, gaps around door and window frames and expansion joints in buildings/construction. Ships in a compressed roll, expands to fill gaps between mechanically fixed panels and trim. Typical expansion occurs in 8-10 hours. Made in Europe.

Application Guide: Compression of the product is required to achieve the following:

20% Compression required for dust & sound protection, and thermal insulation
 50% Compression required for wind, air, dust & sound resistance, and insulation
 70% Compression required for rain protection up to 6.25 psf
 80% Compression required for rain protection up to 21.57 psf



Available Sizes	Qty/Box	Part#
(1/4) 1" x 1" x 20'	12	DMI21305091
(3/8") 1" x 1-1/2" X 15'	12	DMI21305092

Full carton sales only. Color: Black

FILLERSTRIP DIE CUT CLOSURE STRIPS

Die cut foam closure strips with UV inhibitors. Designed to fit popular profiles and close the gap between trims and panels. Each piece is cut to fit specific panel profiles and most are made to your panel width. Available with or without adhesive for an easy, quick, and accurate installation. Flat block rectangular shaped closure strips available to fit standing seam metal roofing panels.

Outside closures:

fit at the ridge line between the outside of the panel and the ridge cap.

Inside closures:

fit at the eve of the roof to seal the inside of the panel profile.

Available Sizes	Qty/Box	With Adhesive	Without Glue
5V inside	100	DCL5VIG	DCL5VIN
5V outside	100	DCL5VOG	DCL5VON
3/4"rib inside	100	DCL3436IG	DCL3436IN
3/4"rib outside	100	DCL3436OG	DCL3436ON
PBR/MR12 inside	100	DCL1236IG	DCL1236IN
PBR/MR12 outside	100	DCL1236OG	DCL1236ON
PBU inside	100		799605
PBU outside	100		799609
2.67 Corrugated	100		799405
4.2 Corrugated	100		799414
7.2 Corrugated	100		799433
1" x 1" x 40" Block	100		DMI2T0003AB
1" x 1.5" x 36" Block	100		DMI2799390



RAZORBACK RIDGE VENT PLUS

Long life universal ridge vent rolls for metal roofing panels. Quick and easy installation directly to ridge cap with full width positioning adhesive tape strip. Long term heat resistant coatings and flame retardants for extended product life. Full width adhesive designed for higher adhesion in cold climates. Made in the U.S.A. with all American Made components. This product has not been tested for Building Code Compliance, not for use in the State of Florida. Please allow a minimum of 25% compression on installation. Standard Razorback ridge vent is available with FBC testing approval #, inquire with your salesperson if desired.

Advantages include:

- Inexpensive, quick and easy to install
- 40 year limited warranty, with fire retardant longlife coatings
- Designed for many roof panel configurations and pitches from 2/12 to 20/12
- Low profile attractive installed appearance
- Does not scratch painted metal surfaces



Available Sizes	Qty/Box	Part#	MADE IN USA
1-1/2" x 2" x 10'	10 **	DMIRB1122010P	
1-3/4" x 2" x 10'	10 **	DMIRB1342010P	
2" x 2" x 10'	10 *	DMIRB2002010P	
2.12" x 2" x 10'	10 *	DMIRB2122010P	

Flat Top * , With Expansion Fingers **

Quick and easy, designed for original or retrofit installations



DOUBLE LAYERED HAND SEAMERS

Professional series hand seamers with double-layered non-slip handles and long-lasting heat-treated steel jaws.



Double-Layered Hand Seamer		
Description	Part#	Qty/Box
1" x 3"	03-535	2/36
1" x 6"	03-539	2/24
1" x 9"	03-540	2/16
1" x 12"	03-541	2/12
2" x 3"	03-549	2/12
2" x 6"	03-546	2/12
3" x 6"	03-547	2/24
4" x 6"	03-511	2/12
4" x 9"	03-512	2/8



Double-Layered Angled Hand Seamer		
Description	Part#	Qty/Box/Case
1" x 3" 45 deg	03-528	2/36
1" x 6" 45 deg	03-530	2/24
1" x 3" 90 deg	03-529	2/36
1" x 6" 90 deg	03-531	4/24

DOUBLE STAGE LOCKING SEAMER

2-in-1 locking seamer for standing seam roof applications. This tool combines the two stages of a double lock seam into a single tool. Powder-coated Steel for durability, lightweight and easy to use.



Double-Stage Locking Seamer		
Description	Part#	Qty/Box
DSLS	03-522	1

FOLDING BARS

Designed as two steel plates welded together with slits running along the length. Perfect for 3/8" and 1" bends.



Folding Tool Description	Part#	Quantity/Box/Case
12"	03-532	4/24
18"	03-533	3/18
24"	03-534	2/12

STANDING SEAM HEMMING TOOLS

Hemming tools are designed to facilitate the quick and precise hemming of metal panel edges for standing seam roofs and can be used to close the high side of panels. Constructed from 10 ga steel and powder-coated for durability. Makes 1" or 1-1/2" bends in metal up to 10" wide, 1/8" throat gap allows use with up to 15 ga material.



Hemming Tool Description	Part#	Quantity/Box/Case
1" x 14.5"	03-560	2/12
1-1/2" x 17.25"	03-561	2/12
1-1/2" x 19"	03-562	2/12
1-1/2" x 20"	03-563	2/12

DRIP EDGE AND VALLEY BENDERS

High leverage Drip Edge Benders are designed to make bends in metal panel edges. Two-handed bar handle design allows two handed use for extra leverage. Lightweight and can easily be used overhead on installed panels to bend up to 18ga material. Constructed from 14 ga steel and powder-coated for durability. Makes 1" or 1-1/2" bends in metal up to 10" wide, 2mm throat gap allows use with up to 18 ga material.



Drip Edge Bender Description	Part#	Quantity/Box
18"	03-564	2
24"	03-565	2
36"	03-566	2

HAMMERS' & HATCHETS

18OZ TINNER'S HAMMER

The perfect hammer for light to medium duty jobs and works well for striking common and finishing nails. Forged single piece steel head and handle for unsurpassed strength and durability. Finely polished head creates a smooth surface. Bonded shock reduction grip reduces shock significantly and lowers hand and arm fatigue. Part # 04-880 6 per box, 18 per case.



16OZ CLAW HAMMER

Standard multi-purpose claw hammer with a forged steel head and fiberglass handle. Durable forged steel head. Super strong, ultra-light and anti-vibration fiberglass ergonomic handle. Sharp claw for precision and efficiency, ideal for masonry, walls, bricks and concrete. Part # 04-175



16OZ HICKORY SHINGLING HATCHET

Durable construction, lightweight and ergonomic handle design. High carbon steel head with hardened face, premium hickory handle with lacquered finish. Fixed blade and replaceable gauge, triple wedge construction and milled face. Premium hickory handle, flame and lacquer finish. Part # 04-442 1 per box, 24 per case.





AVIATION SNIPS

Ideal snips for cutting light stock. High-quality chrome-vanadium alloy steel. Rubber comfort grip handles and safety latch. Non-slip serrated jaws for efficient cutting, spring action for fast, effortless feed. Standardized handle colors are easy to identify.

	Aviation Snips		Quantity
	<u>Description</u>	<u>Part#</u>	<u>Box/Case</u>
	Straight Cut	36-317	6/48
	Left Cut	36-318	6/48
	Right Cut	36-319	6/48



OFFSET LONG CUT AVIATION SNIPS

Offset snips with 3" blades ideal for long cuts. Ideal snips for cutting light stock. Rubber comfort grip handles and safety latch. Non-slip serrated jaws for efficient cutting, spring action for fast, effortless feed. Standardized handle colors are easy to identify.

	Offset Long Cut Snips		Quantity
	<u>Description</u>	<u>Part#</u>	<u>Box/Case</u>
	Offset Long Left Cut	36-323	6/36
	Offset Long Right Cut	36-324	6/36



OFFSET AVIATION SNIPS

Offset jaws to keep hands up and away from sharp metal edges. Ideal snips for cutting light stock. Rubber comfort grip handles and safety latch. Non-slip serrated jaws for efficient cutting, spring action for fast, effortless feed. Standardized handle colors are easy to identify.

	Offset Aviation Snips		Quantity
	<u>Description</u>	<u>Part#</u>	<u>Box/Case</u>
	Straight Cut	36-328	6/48
	Left Cut	36-327	6/48
	Right Cut	36-329	6/48

VERTICLE OFFSET AVIATION SNIPS

Vertical offset snips ideal for increased reach in overhead projects, tight spaces or ground level cutting. Cut straight and left curves in 24 gauge cold-rolled steel and 28ga stainless steel. Offset blades keep hands safely away from material and provide increased reach in tight situations.

	Aviation Snips		Quantity
	<u>Description</u>	<u>Part#</u>	<u>Box/Case</u>
	Vertical Offset Left Cut	36-325	6/36
	Vertical Offset Right Cut	36-326	6/36


TINSNIPS

Ideal for cutting low carbon cold-rolled steel. Cut straight and wide curves when trimming light gauge stock. Cushion grip and hand-edged forged steel blades.

	Tin Snips		Quantity/
	<u>Description</u>	<u>Part#</u>	<u>Box/Case</u>
	8" Tinsnips	36-352	6/24
	10" Tinsnips	36-353	5/30
	12" Tinsnips	36-354	6/24



DRILL-OPERATED AVIATION SNIPS

Converts a power drill into aviation snips. Has applications in metal roofing, building panels, metal duct work and sheet metal. Comes as a complete kit, snip attachment, 1 nut, 3 screws, 2 drill clamps, 1 soft grip hand, 5mm and 10mm wrench.

	Drill-Operated Aviation Snips		Quantity
	<u>Description</u>	<u>Part#</u>	<u>Box/Case</u>
	Kit	36-320	1



MULTI-PURPOSE/MULTI FUNCTION SHEARS SCISSORS

Shears are ideal for cutting sheet metal and leather, stainless steel serrated blade, lightweight and durable. Multi-Function Scissors are ideal for cutting sheet metal, polycarbonate, and plastic.

	Shears		Quantity/
	<u>Description</u>	<u>Part#</u>	<u>Box/Case</u>
	8" Multi Purpose Straight	36-480	6/36
	8" Multi Function	36-481	6/36
	10" Multi Purpose Offset	36-480	6/36


ALUMINUM & ALUMINUM COMPOUND SCISSORS

Ideal for vinyl siding and can be used to cut sheet metal, roofing materials, plastic and canvas. Cuts straight right and left curves in up to 22 ga cold-rolled steel or .032 aluminum. 3" cutting length and multiple handle openings. Blue compound style has protruding blade for tighter cuts.

	Aluminum Scissors		Quantity/
	<u>Description</u>	<u>Part#</u>	<u>Box/Case</u>
	12"	36-374	3/24
	14"	36-375	4/24
	12" Compound	36-373	4/24


HAND RIVET GUN

Ideal for pulling blind rivets. Rubber grip handles, 4 size adjustments.

	Rivet Gun - Hand Riveter		Quantity/
	<u>Description</u>	<u>Part#</u>	<u>Box</u>
	Rivet Gun	36-300	6

SNAP LOCK PUNCH

Makes tabs in the cut edge of a siding panel used as a finishing course. Punch impression spaced 3/8" for edge of metal. Non-slip vinyl cushion handle.

	Snap Lock Punch		Quantity/
	<u>Description</u>	<u>Part#</u>	<u>Box</u>
	SLP	33-640	6/48

SPECIALTY TEAR-OFF TOOLS NUTSETTERS & BITS



BEST DAMN RIPPER ROOFING SHOVEL

Lightweight and durable, pries forwards and backwards for increased productivity. Center wing at the base of the handle allows shingles to slide off effortlessly. Patented EZ-Gliders under the blade allow seamless gliding and increased leverage for prying nails, resulting in up to 75% less effort and more efficiency. D Grip or Long handle.

Best Damn Ripper	Part#	Quantity/ Package
<u>Description</u>		
36" with D Handle	83-306	3/300
48" Long Handle	83-307	3/300



BEST DAMN RIPPER PRO ROOFING SHOVEL

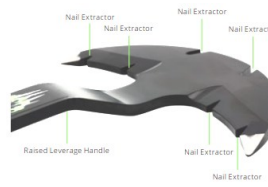
A unique redesign of the Best Damn Ripper features deep angled side slots on the blade that allow it to easily locate and pry nails from the base of side walls and under step flashing without having to bend over and switch out tools to complete the task. The sharp rear teeth with reduced spacing facilitate complete removal of thinner nails and underlayment staples. Pries forwards and backwards

Best Damn Ripper Pro	Part#	Quantity/ Package
<u>Description</u>		
36" with D Handle	83-309	3/300



CLAWVERINE

This patented tool is the ultimate solution for cleaning nails from step flashing. Use the prying end to locate nails hidden under step flashing and lift them up slightly. Simply hook the nail into one of the slits in the extractor head, and pivot horizontally against the wall to pull the nail out. Reduces effort and saves money by avoiding damaged step flashing.



CLAWVERINE	Part#	Quantity/ Package
<u>Description</u>		
15" Clawverine	09-276	3/300

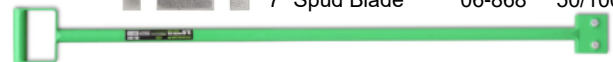


SPUD BARS AND BLADES

Ideal for removal of gravel, slag and old roofing. Welded steel for maximum strength, replaceable pre-hardened carbon steel blades.



Description	Part#	Quantity/ Package
3-1/2" Spud Bar	06-865	1/6
3-1/2" Spud Blade	06-867	50/200
7" Spud Bar	06-866	1/4
7" Spud Blade	06-868	50/100



15" UTILITY BAR

Contoured shape makes pulling nails, prying, lifting and scraping easier, mail slots at both ends for easy nail removal. Forged high carbon steel for increased strength and durability.



Description	Part#	Quantity/ Package
<u>15" Bar</u>	09-201	12/24

HEX NUT-SETTERS AND BIT TIPS

DMI distributors offer magnetic and LSC Hex drivers for the installation of hex and HWH fasteners. LSC has a pressure spring instead of a magnetic disc to hold the fastener making them the choice for driving stainless steel and other non-magnetic hex head fasteners. We also offer a variety of Phillips, Square, and T-25 Drive bit tips. New retail shelf packaging now in sealable plastic bins.



LSC = Non Magnetic Nut-Setters



Plastic Bins/Pailed	Bin/Case	Part#
1/4" x 2.5" Hex LSC	100/400	DMIPSSHL14V
5/16"x 2.5" Hex LSC	100/400	DMIPSSHL516V
5/16" SCAMP MAG	100/400	SCAMP516PD
3/8" x 2.5" Hex LSC	100/400	DMIPSSHL38V
Bagged	Bag/Box	Part#
1/4" x 3" Hex Mag	25/100	DMI3LMSHL14
1/4" x 6" Hex Mag	1/100	DMI9TIP146
5/16" x 3" Hex Mag	25/100	DMI3LMSHL516
5/16" x 6" Hex Mag	1/100	DMI9TIP5166
3/8" x 3" Hex Mag	25/100	DMI3LMSHL38
#2 Phillips x 2"	10/100	DMI9TIP2P2
#3 Phillips x 2"	10/100	DMI9TIP3P2
#2 Square x 2"	10/100	DMI9TIP2S2
T-25 x 1"	10/100	DMI9TIP25T1

DRILL BITS

Direct Metals, Inc offers quality drill bits from a variety of high quality manufacturers. Double ended drill bits for steel panels, SDS drill bits for masonry. Full package orders only.



Available Sizes	Use	Useable	Qty	Part #
1/8" x 2" #30 DE	Steel	1"	12	DMI9DEDB2ATF
1/4" x 6-3/8" SDS	Concrete	4"	25	DMI9DB14638SDS
7/32" x 2.5"	Steel		12	DMI9SWSN7/32
1/8" x 2.5"	Polycarbonate		12	DMI9SWSN1/8
3/8" x 4"	Polycarbonate		6	DMI9DB384

TOOLS

BITS, NUT SETTERS, BENDING AND CUTTING

Below is a in stock list of tools.

Please visit our website to find a larger selection of tools available to you at [DMI-PRIMELINE-FULL-LINE-ROOFING-TOOL-PRODUCT-LISTING-2023-NP.pdf](https://directmetalsinc.com/DMI-PRIMELINE-FULL-LINE-ROOFING-TOOL-PRODUCT-LISTING-2023-NP.pdf) (directmetalsinc.com)



GENERAL ROOFING AND LOW SLOPE TOOLS

	PART #
SEAM PROBE	72-010
ROOF KNIFE - FIXED BLADE ROOFERS KNIFE	36-274
ROOFERS SHARK KNIFE	36-280
2" CORE CUTTER	22-402
BEST DAM RIPPER ROOFING SHOVEL W/D HANDLE	83-306
BEST DAM RIPPER ROOFING SHOVEL W/48" STRAIGHT HANDLE	83-307
BEST DAM RIPPER PRO ROOFING SHOVEL	83-309
1/4" BRASS PENNY ROLLER	72-029
1-1/4" X 1-3/4" SILICONE ROLLER SINGLE FORK (BLACK/RED)	72-001
2-IN-1 SILICONE ROLLER/PENNY ROLLER	72-030
2" X 4" DOUBLE FORK SILICONE ROLLER	72-002
2" X 2" SINGLE FORK STEEL ROLLER	72-032
2" X4" DOUBLE FORK STEEL ROLLER	72-035
2-NOTCH STRAIGHT BLADES - 5 PACK	36-253
2-NOTCH DEEP HOOK BLADES - 5 PACK	36-256
15" UTILITY BAR	09-201
TEFLON-COATED SCISSORS	36-470
SKELETON-TYPE CAULKING GUN 10 oz	45-121
2" X 5" MARGIN TROWEL	71-005
18" MAGNET BROOM	73-218
36" MAGNET BROOM W/ U-HANDLE	73-255
20" SURE-PICK MAGNET BROOM	73-222
2 NOTCH STRAIGHT BLADES - 100 PACK	36-263
2-NOTCH DEEP HOOK BLADES - 100 PACK	36-266
9-1/2" PAINT ROLLER CAGE FRAME	38-198
9-1/2" PAINT ROLLER COVER 3/8" NAP	38-197
13" 28OZ SKELETON-TYPE CAULKING GUN	45-127
1/4" x 50' POLYURETHANE AIR HOSE (GREEN)	31-010
MAG HATCH BEST DAMN HAMMER ROOF HATCHET MAGNETIC	04-460
16OZ HICKORY SHINGLING HATCHET	04-442
16OZ CLAW HAMMER - FIBERGLASS HANDLE	04-175
LADDER STABILIZER STRAPS - PAIR	73-343
3-1/2" SPUD BAR	06-865
7" SPUD BAR	06-866
3-1/2" SPUD BAR BLADE	06-867
7" SPUD BLADE	06-868
CLAWVERINE 09-276	09-276
TITANIUM FIELD TORCH KIT	88-344
EXTENDABLE ALUMINUM ROLL PULLER	72-207

*****NEW NOW IN STOCK*****

20" SURE-PICK MAGNET BROOM

The Bullet Boot

The Bullet Boot is designed to be an aesthetically pleasing and environmentally responsible alternative to old style toxic lead pipe boot flashings for single roofing pipe penetrations.

Features & Benefits:

- Fast Installation, no painting needed, colored throughout
- 100% UV protected flexible TPE construction
- Non Staining and adapts to almost any roof pitch
- Very affordable with a 35 year manufacturers warranty
- Made in the U.S.A., Ft Myers, Florida.
- FBC Code Approval # FL 25870 R1
- Covers the pipe inside and out
- No clamp needed
- Built in removable pest screen



Specifications

UV Protected TPE Material with plastic removable pest screen.

Tensile Strength: 1825 psi ASTM D412
 Tear Strength: 195 lbs/in ASTM D624
 Service Temp: -74 deg F to 190 deg F
 Wind Uplift Resistance: -45 PSF (8 fasteners) -160 PSF (16 fasteners)

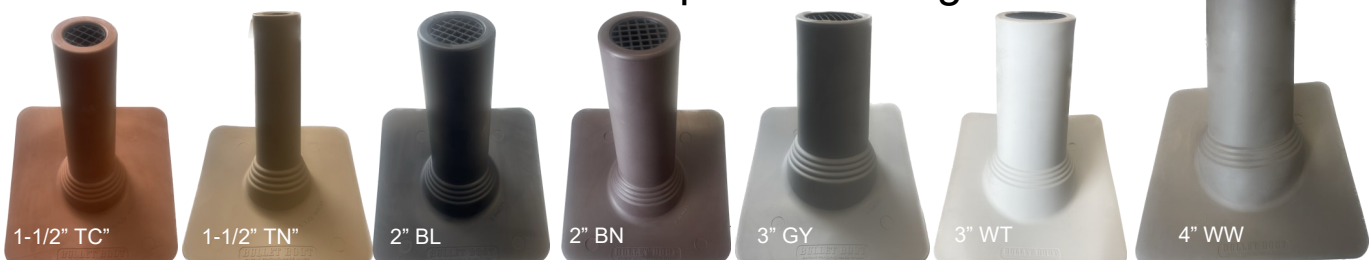
Design wind uplift pressure resistance in ASD with safety factor of 2-1.
 Evaluation Report 17-209-BB-ER
 Environmental Resistance: Excellent resistance to Ozone, UV, water, alcohol, weak acids & chlorine.

Bullet Boots complement Bullet Goose Neck and off-ridge vents for a clean long life installation.



FL 25870 R1

6 colors choices available to complement shingle and tile



Selection

Available Size/Color	Qty/Box
1-1/2" White	16
1-1/2" Brown	16
1-1/2" Gray	16
1-1/2" Black	16
1-1/2" Weathered wood	16
1-1/2" Tan	16
1-1/2" Terracotta	16
2" White	16
2" Brown	16
2" Gray	16
2" Black	16
2" Weathered wood	16
2" Tan	16
2" Terracotta	16
3" White	16
3" Brown	16
3" Gray	16
3" Black	16
3" Weathered wood	16
3" Tan	16
3" Terracotta	16
4" White	8
4" Brown	8
4" Gray	8
4" Black	8
4" Weathered wood	8
4" Tan	8
4" Terracotta	8

The California Bullet Boot

The Bullet Boot is designed to be an aesthetically pleasing and environmentally responsible alternative to old style toxic lead pipe boot flashings for single roofing pipe penetrations. The California Bullet boot is similar to the standard bullet boot with a larger base and a taller stack.

Features & Benefits:

- Fast Installation , no painting needed, colored throughout
- 100% UV protected flexible TPE construction
- Non Staining and adapts to almost any roof pitch
- Very affordable with a 35 year manufacturers warranty
- Made in the U.S.A. , Ft Myers, Florida.



Selection

Available Size/Color	Qty/Box
1-1/2" Brown	8
1-1/2" Black	8
1-1/2" Weathered wood	8
2" Brown	8
2" Black	8
2" Weathered wood	8
3" Brown	8
3" Black	8
3" Weathered wood	8

The Bullet Gooseneck Vent

The Bullet Gooseneck Vent is designed to be a no leak and aesthetically pleasing alternative to old style metal Gooseneck Vents. This innovative product comes with a built in cricket, a debris screen and rain damper. Structural Testing done per ASTM E330-02

Features & Benefits:

- Fast Installation , no painting needed, colored throughout
- 100% UV protected HD Polypropylene carbonate material
- Will not crack in hot or cold installations
- Very affordable with a 35 year manufacturers warranty
- Built in cricket to enhance water flow-around
- Made in the U.S.A.
- Florida Building Code Approval FL 25870 R1



www.directmetalsinc.com

5 colors available to in 8" and 10"



Selection

Std neck for shingle installations

Available Size/Color	Qty/Box
8" White	8
8" Brown	8
8" Gray	8
8" Black	8
10" White	8
10" Brown	8
10" Gray	8
10" Black	8

12.5" neck for tile installations

Available Size/Color	Qty/Box
9" Terracotta	4
9" Tan	4
9" Weathered Wood	4
9" Gray	4



Galvalume Goose Neck Vents

Assembled with a removable screen, peel back underside adhesive. Quality galvalume construction, now available with or without damper. Made in the U.S.A. No warranty, no returns on this product. This product has no approvals or testing, please check with your local building department before ordering.

10" Tall x 10" deep x width.

Standard stock sizes are 4" and 10" other widths can be made to order.

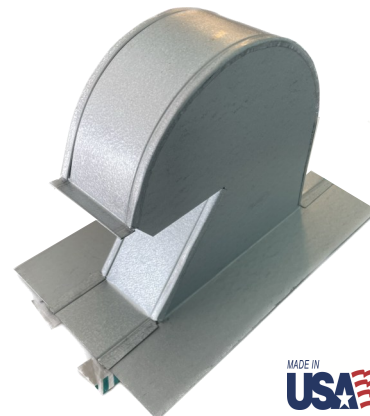
Also available to be made to order in copper, aluminum or in painted colors of galvalume. Made in the U.S.A.

Without Damper

Size	Qty/Box	Part #
4"	14	DMI4GNVCOGLMES
10"	6	DMI10GNVCOGLMES

With Damper and Screen

Size	Qty/Box	Part #
4"	14	DMI4GNVDPCOGLMES
6"	10	DMI6GNVDPCOGLMES
10"	6	DMI10GNVDPCOGLMES



SHINGLE ROOFING EMC/ RETROFIT, ROOF VENT BOOT GUARDS, TPO BOOTS



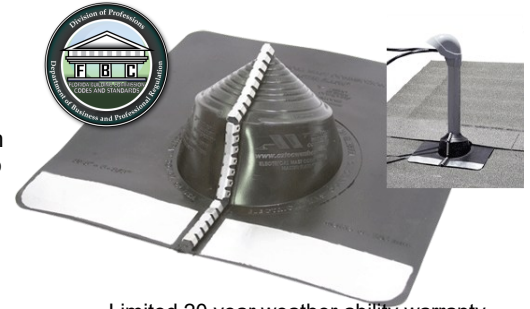
RETROFIT RESIDENTIAL MASTERFLASH™ FOR ELECTRICAL MAST CONNECTIONS

The new solution for flashing electrical mast connections on shingle roofing. Specifically designed for the residential roofing industry, compounded for maximum resistance to weathering due to ozone and ultraviolet light. The base is designed to mold to most configurations and roof pitches regardless of pipe location. Easy to see pipe diameter markings make for an easy on-site installation. Built in 20 deg pitch allows adaptability to almost any pitch including 45 deg angles. No hassle stainless steel grippers to secure in retrofit applications. Tested to continuous 212 deg F and - 67 deg F. Not designed for use on metal roofing.

100% Made in N. America, over 50% U.S.A content B.A.P.

<u>Fits</u>	<u>Base</u>	<u>Part#</u>	<u>Approvals</u>
0" to 5-3/8"	15" x15"	DMLEMC101BS	FBC FL 28400.1 R1

10 Pieces per carton.



Limited 20 year weather-ability warranty.

ROOF VENT BOOT GUARD, LEAD BOOT COVER

Permanently stops squirrel and rodent damage to lead boot stack flashings. This one piece molded guard slides over existing lead flashings. The extra thick sturdy design is expected to last for the life of your roof. This guard is colored throughout in popular shingle colors and UV protected for durability. It Improves appearance of roofing systems and installs in minutes without special tools, only a PH screw driver is needed.

Size	Fits Stacks	Qty/Box	Standard colors
Small	1-1/2" to 2"	25	Gray, White, Brown, and Black
Large	3"	16	Gray, White, Brown, and Black
XLarge	4"	12	Gray, White, Brown, and Black



Special order colors include: Terracotta, Cream, Tan and Hunter Green.



Bullet Weldable TPO Boots 12"

The Bullet Products solution for TPO flat roofing pipe penetrations. This flashing is made with white Polyolefin Elastomer (TPO) and can be heat welded to TPO roofing systems. Easy installation with no sealants or clamps needed. The boot is designed to be an aesthetically pleasing is oil resistant and features a removable pest screen.

Features & Benefits:

- Fast Installation, new 80mil weldable base
 - 100% UV protected flexible TPO construction, covers the pipe inside and out.
- Tensile Strength: 1800 psi ASTM D412 , Shore Hardness: 90 A ASTM D2240
Service Temp: -74 deg F to 190 deg F Environmental Resistance: Excellent resistance to Ozone, UV, water, alcohol, weak acids & chlorine.

Available Sizes	Qty/Box	Part#
1-1/2"	10	DMITPOBWT150
2"	10	DMITPOBWT200
3"	10	DMITPOBWT300
4"	5	DMITPOBWT400



There is no specific approval number or system manufactures warranty coverage on this item. Please check local building codes and roofing system manufacturers requirement prior to ordering.

NOTES:**2025 Sales Policies and Conditions:**

Direct Metals, Inc. has worked diligently to set up a distribution network including wholesale roofing supply locations, building products distributors, and OEM Manufacturers. As DMI is not set up for one time purchases or direct to market sales to the public, building owners, builders, contractors, installers or end users, we rely on this network to bring our products to market. Direct Metals, Inc. sells materials directly to our registered distributor network. We do not offer direct sales however we can assist you in finding the right product and your closest distributor.

Return Policy:

*All DMI distributors have the right to set their own policies with their customers including but not limited to: return, re-stock, pricing and terms of sale. DMI policy to our distributors is that all sales are considered final (**ALL SALES FINAL**). No returns on sales older than **45 days**, regardless of circumstance. Prior approval from Direct Metals, Inc management is required for any and all returns. If DMI management will accept a return, it must be a standard stock product returned in original un-opened packaging, with a non-negotiable restocking fee. Any painted or special order product sales are final, no returns. No returns on items 2' or larger in any dimension including translucent panels, termination bar, windows and doors. **Re-stocking fee is 25%** of the invoice amount, in addition to all shipping costs to send original shipment and return product to a Direct Metals, Inc service center. All credits for qualifying returns will be given in the form of an account credit against new purchases. **No cash refunds available***

Information Policy:

DMI works to maintain to the best of our abilities, correct and current information in our catalogs and on our websites. However data and information on our products and services can quickly become out of date without prior warning. Part numbers and box labels may change or vary from this catalog or DMI websites. The information presented is from sources believed to be reliable but no warranty (expressed or implied) is made regarding accuracy, adequacy, completeness, legality, reliability or usefulness of any of the information contained within this catalog or DMI websites.



3 REGIONAL SERVICE CENTERS TO PROVIDE FAST SERVICE ON QUALITY PRODUCTS

Mid-Atlantic U.S.A.



South Eastern U.S.A.

North Eastern U.S.A.



Mid Western U.S.A.

South Central U.S.A.



South Western U.S.A.

Corporate Offices :

Ft Myers, FL 33905 Toll Free: 855-800-8878

Southeast Service Center:

1719 Baseline Ct. Ft Myers, FL 33905

Midwest Service Center:

1800 Jim Neu Drive, Suite 3 Plymouth, IN 46563

South Central Service Center:

16501 Central Green Boulevard, Suite 200 Houston, TX 77032

Low Slope Roofing Fastener Service Center:

4244 Edison Ave. Ft Myers, FL 33916

Residential Roofing Flashing Service Center:

4244 Edison Ave. Ft Myers, FL 33916

Customer Support:

Telephone

Email

Customers Service:

239-599-8527

orders@directmetalsinc.com

Credit Services:

239-599-8527 ext. 27

credit@directmetalsinc.com

Account Receivable:

239-599-8527 ext. 14

ar@directmetalsinc.com

Your distributor is:

