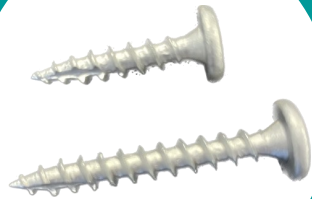




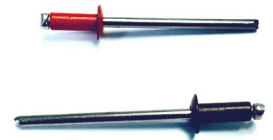
2025 STANDING SEAM COMPONENT CATALOG



PG 2-4



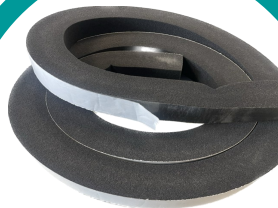
PG 5-6



PG 7



PG 8



PG 11



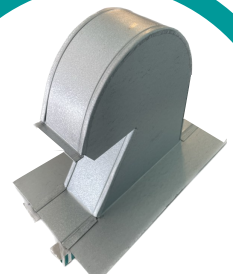
PG 12-13



PG 9



PG 8



PG 14

PANCLIP - for applications that require a low profile head with large flat under head load bearing surface. The Panclip head combines a larger clamping surface than a PFH fastener and a lower profile than a HWH or hex head fastener. Designed primarily for the installation of standing seam metal roofing panel clips. The Panclip has many other applications such as window, door, fixture, liner panel, cladding and siding panel installations. Panclip fasteners are now available for wood (MTW), steel (MTM) or wood to metal (WTM) applications.

#10 PANCLIP MTW 1000 HR MIAMI-DADE

DMI's "standard" fastener for low profile fastening applications to wood substrates. This engineered multi-purpose fastener is a carbon steel fastener with E zinc galvanizing and DMG85 corrosion resistant coating. This fastener meets exceeds the ASTM G85 Miami-Dade corrosion resistance requirement and the Silver parts have a Miami-Dade fastener listing L 21-0630.02. This fastener also meets the Florida Building Code, 2017 FBC R904.5.2, 2014 1505.5 1000 hr ASTM B-1117 requirements. The #10-9 thread pattern performs well in plywood and OSB substrates. All Panclip MTW screws feature #2 square drive and a TP-17 point and are packaged 250 pcs per bag.

Product Selection

Silver DMG85 Coated Miami Dade L21-0630.02

Available Sizes	Qty/Box	Part#
#10 x 1"	TP17 5,000	DMIPD10100T **
#10 x 1-1/2"	TP17 2,500	DMIPD10150T **
#10 x 2"	TP17 2,000	DMIPD10200T **
#10 x 2-1/2"	TP17 2,000	DMIPD10250T **

White DMG85 Coated

Available Sizes	Qty/Box	Part# 1000hr
#10 x 2"	TP17 2,000	DMIPD10200WT *
#10 x 3"	TP17 1,500	DMIPD10300WT *

304 Stainless Steel with Silver DMG85
Miami-Dade L20-0309.02

Available Sizes	Qty/Box	Part#
#10 x 1"	TP17 5,000	DMIP31010D ***
#10 x 1-1/2"	TP17 2,500	DMIP31015D ***
#10 x 2"	TP17 2,000	DMIP31020D ***
#10 x 2-1/2"	TP17 1,500	DMIP31025D ***

316 Stainless Steel Passivated Uncoated

Available Sizes	Qty/Box	Part#
#10 x 1-1/2"	TP17 2,500	DMIP3161015D *

Description

Drive: SQ2
Material: C1022, 304SS, 316SS
Point: TP-17
Finish: DMG85 Silver
Substrate/Use: Wood
Thread: 9 TPI
Thread Diameter: Maj: .185" Min .201"
Head Height .060" - .07"
Head Diameter: .435" - .472"
Country of Origin: Taiwan

Performance Specifications

Torsional: 66 in-lbs
Tensile: 1,981 lbs. min.
Shear: 1,428 lbs min.
Pull out / Withdrawal Values:
S. Yellow Pine 944 lbs ult
3/4" PLY 665 lbs ult
1/2" PLY 387 lbs ult
7/16" OSB 192 lbs ult

Corrosion Resistance

TAS114 Appendix E G85 Annex A5:1000 Hour, ASTM B117 1000 Hour.

Code Compliance

*Florida Building Code Compliant 1506.6
**Miami-Dade County # L21-0630.02
***Miami-Dade County # L20-0309.02



PANCLIP SP MTW - 1000 HR COATED

Panclip fastener designed for clip installation into dimensional lumber wood substrates. Full Silver DMG85 coating and sharp point. Meets FBC 1506.6 and Miami Dade requirements. Available in older 11 TPI and 13 TPI design thread patterns specified in some approved systems more specifically suitable for dimensional lumber substrates. Packaged 250 pcs / bag

Product Selection

Blue DMG85 Coated Miami Dade L21-0630.01

Available Sizes	Qty/Box	Part#
#10-13 x 1-1/4" S2	3,500	DMIPDX10114BA **

Silver DMG85 Coated Miami Dade L21-0630.05

Available Sizes	Qty/Box	Part#
#12-11 x 3/4" S2	5,000	DMIPD1203411T ***
#12-11 x 1" P2/S2	5,000	DMIPD121011T ***
#12-11 x 2" S2	2,000	DMIPD122011T ***

304 Stainless Steel Silver DMG85 Coated

Available Sizes	Qty/Box	Part#
#12-11 x 3/4" A	5,000	DMIP31234D *
#14-14 x 3/4" AB	4,000	DMIP31434SDCAB*
#14-14 x 1" AB	3,000	DMIP31410SDCAB*

Corrosion Resistance

TAS114 Appendix E G85 Annex A5:1000 Hour, ASTM B117 1000 Hour.

Code Compliance

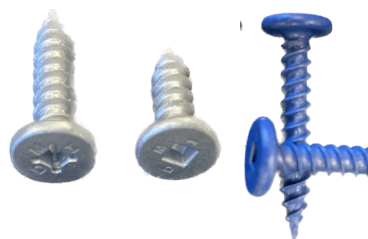
*Florida Building Code Compliant 1506.6
**Miami-Dade County # L21-0630.01
***Miami-Dade County # L21-0630.05

Description

Drive: SQ2
Material: C1022, 304SS
Point: Sharp
Finish: DMG85 Silver or Blue
Substrate/Use: Wood
Thread TPI: #10-13, #12-11, #14-14
Thread Diameter: #10 Maj: .185" Min .132"
Thread Diameter: #12 Maj: .220" Min .156"
Head Height .070" - .080"
Head Diameter: .435" - .472"
Country of Origin: Taiwan

Performance Specifications

Torsional: #10: 81 lbs, #12: 132 lbs
Tensile: #10: 1,981 lbs., #12: 2102 lbs.
Shear: #10: 1,428 lbs, #12: 1994 lbs.
Pull out / Withdrawal Values: lbs Ultimate
SYP 2X #10: 989, #12: 622 lbs.
3/4" PLY #10: 553, #12: 427 lbs.
1/2" PLY #10: 341 lbs, #12: 377 lbs.
7/16" OSB #10: 157 lbs, #12: 326 lbs.
3/4" OSB



PANCLIP XLP WAFER HEAD FASTENER

With extra low profile pancake wafer head for installing nail strip style standing seam panels into wood substrates. XLP MTW comes standard with DMG85 Silver corrosion resistant coating designed to exceed Florida Building Code and Miami-Dade County requirements. The XLP's larger #12-8 diameter provides superior holding strength vs. competing #10 fasteners into wood substrates. The XLP has a sharp point and #2 Square drive for ease of installation.

The #12-8 and #10-13 are available in both coated carbon steel and coated 304 stainless steel. A most economical Zinc plated only option was added for 2025 for use outside of code restricted areas, offering a PH2/SQ Drive. All XLP fasteners are packaged 250 pieces per bag.

Product Selection

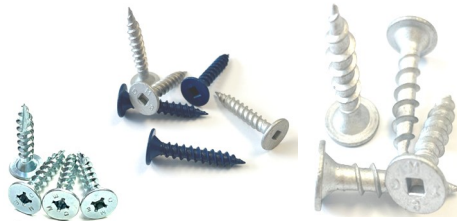
Silver DMG85 Coated Miami Dade L21-0630.04			
Available Sizes	Qty/Box	Part#	
#12 x 1"	SQ2 5,000	DMIPXLP121SD **	
#12 x 1-1/2"	SQ2 2,500	DMIPXLP1215SD **	
#12 x 2-1/2"	SQ2 1,500	DMIPXLP1225SD **	

304 Stainless Steel Silver DMG85 Coated			
Available Sizes	Qty/Box	Part#	
#12 x 1"	SQ2 5,000	DMIPXLP121SS **	
#12 x 1-1/2"	SQ2 2,500	DMIPXLP1215SS **	
#12 x 2-1/2"	SQ2 1,500	DMIPXLP1225SS **	

Blue DMG85 Coated			
Available Sizes	Qty/Box	Part#	
#10-13 x 1-1/8"	3,500	DMIPX10118BA *	
#10-13 x 2"	2,000	DMIPX10200BA *	

304 Stainless Steel Silver DMG85 Coated			
Available Sizes	Qty/Box	Part#	
#10-13 x 1-1/8"	3,500	DMIPX10118SS *	

Econo Zinc Plated Only, PH2/SQ2,			
Available Sizes	Qty/Box	Part#	
#10-8 x 1"	5,000	DMIPX10100CH	
#10-9 x 1"	5,000	DMIPX10100ZTSPC	



Description

Drive: SQ2
Material: C1022, 304SS
Point: Sharp Point, TP-17
Finish: DMG85 Silver, Zinc Plated
Substrate/Use: Wood
Thread: #10-8, #10-9, #10-13, #12-8
#10-8 Thread Diameter: Maj: .202" Min .132"
#10-13 Thread Diameter: Maj: .194" Min .136"
#12-8 Thread Diameter: Maj: .217" Min .148"

Head Height .038" - .042"
Head Diameter: .428" - .445"
Country of Origin: Taiwan

Performance Specifications

	#10-13	#12-8
Torsional:	60 in-lbs	60 in-lbs
Tensile:	1,981 lbs.	2,000 lbs
Shear:	1,326 lbs.	1,860 lbs
Pull out / Withdrawal Values: lbs ultimate		
3/4" PLY		587 lbs
5/8" PLY		446 lbs
1/2" PLY	380 lbs	395 lbs
23/32 OSB		520 lbs
7/16" OSB	171 lbs	

Corrosion Resistance

TAS114 Appendix E G85 Annex A5:1000
Hour, ASTM B117 1000 Hour.

Code Compliance

*Florida Building Code Compliant 1506.6
**Miami-Dade County # L21-0630.04

PANCLIP-SD-L LONG LENGTH PANCAKE HEAD

#14-13 fastener low profile head fastener designed for applications that require a high strength fastener available in long lengths. Popular for many applications: Panel clip/ Commercial Roofing Stress Plate/Plywood/ Nailboard/ commercial/ Fixture attachment and more...

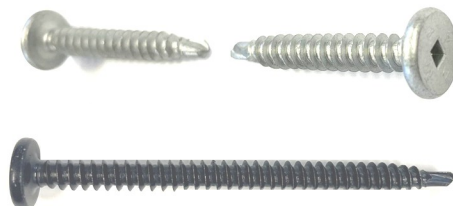
The multi-purpose nature of the Panclip SDL allows it to be installed into wood, light gauge metal up to 16ga and masonry/ concrete substrates with a 3/16" pre-drill.

Available in Steel or 410 Stainless Steel variants, both with the DMG85 ceramic barrier coating for optimum corrosion and dissimilar metal reaction resistance.

Product Selection

Black DMG85 Coated Miami Dade L21-0630.02			
Available Sizes	Qty/Box	Part#	
#14 x 1-1/2"	2,500	DMIPL1415D **	
#14 x 1-1/2"	100/2,400	DMIPL1415D100 **	
#14 x 2"	100/2,400	DMIPL1420D100 **	
#14 x 3"	1,000	DMIPL1430D *	
#14 x 3"	100/1,600	DMIPL1430D100 *	
#14 x 4"	1,000 B	DMIPL1440D *	
#14 x 4"	100/1,600	DMIPL1440D100 *	
#14 x 5"	1,000 B	DMIPL1450D *	
#14 x 5"	100/1,200	DMIPL1450D100 *	
#14 x 6"	1,000 B	DMIPL1460D *	
#14 x 6"	100/1,200	DMIPL1460D100 *	
#14 x 7"	500 B	DMIPL1470D *	
#14 x 8"	500 B	DMIPL1480D *	
#14 x 10"	100/300	DMIPL14100D100 *	

410 Stainless Steel Silver DMG85 Coated			
Available Sizes	Qty/Box	Part#	
#14 x 1-1/2"	2,500	DMIP41415D *	
#14 x 3"	1,000	DMIP41430D *	
#14 x 5"	500	DMIP41450D *	
#14 x 7"	500	DMIP41470D *	
#14 x 10"	500	DMIP414100D *	



Description

Drive: SQ2
Material: C1022, 410SS
Point: SD1
Finish: DMG85 Black or Silver(SS)
Substrate/Use: Wood, Metal Deck, Concrete
Metal Substrate 22 ga up to 16ga
Thread: 13 TPI, Buttress
Thread Diameter: Maj: .238" Min: .166"
Head Height .060" - .07"
Head Diameter: .49" - .51"
Country of Origin: Taiwan

Performance Specifications

Torsional: 110 in-lbs

Pull out / Withdrawal Values:	
3/4" PLY	630 lbs ult
1/2" PLY	423 lbs ult
7/16" OSB	333 lbs ult
22 ga Steel 102ksi	575 lbs ult
22 ga Steel 80ksi	456 lbs ult
16 ga Steel	1,103 lbs ult
4000 PSI Concrete	675 lbs ult
CMU Block	432 lbs ult

Corrosion Resistance

TAS114 Appendix E G85 Annex A5:1000
Hour, ASTM B117 1000 Hour.

Code Compliance

*Florida Building Code Compliant 1506.6
**Miami-Dade County # L21-0630.03

PANCLIP-SD for applications to that require a low profile head with large flat under head load bearing surface. The Panclip head combines a larger clamping surface than a PFH fastener and a lower profile than a HWH or hex head fastener. Designed primarily for the installation of standing seam metal roofing panel clips and commercial roofing stress and seam plates. The Panclip also has many other applications such as window, door, fixture, liner panel, cladding and siding panel installations.

PANCLIP-SD SELF DRILLING MTM

Panclip low profile pancake head mated to a self drilling drill point for drill and tap performance into metal and steel substrates. PANCLIP-SD features the 1000hr DMG85 ceramic coating over both the zinc plated C1022 and 410 Stainless Steel parts. This barrier coating provides resistance to corrosion and dissimilar metal reactions. DMI headmarkings signify C1022 DMG85 fasteners while a DMI4 head marking signifies 410 Stainless steel with the DMG85 Coating. Most sizes come bulk in the box.



Product Selection

Silver DMG85 Coated, S2 SD2, S2 SD3, S3 SD3			
Available Sizes	Qty/Box	Part#	1000hr
#10-16 x 1" SD2	5,000	DMIPD210100C *	
#10-16 x 1-1/2" SD2	2,500	DMIPD210150C *	
#12-14 x 1" SD3	5,000	DMIPD312100C *	
#12-14 x 2" SD3	2,000	DMIPD312200C *	
1/4-14 x 1-1/4" SD3	3,500	DMIPD314125C *	
1/4-14 x 2" SD3	2,000	DMIPD314200C *	
1/4-14 x 4" SD3	1,000	DMIPD314400C *	
1/4-14 x 6" SD3	500	DMIPD314600C *	
1/4-14 x 8" SD3	500	DMIPD314800C *	
1/4-14 x 10" SD3	500	DMIPD3141000C *	

Silver DMG85 Coated, SQ3, SD4			
Available Sizes	Qty/Box	Part#	1000hr
1/4-20 x 1-1/2" SD4	2,500	DMIP514150TC *	
1/4-20 x 3" SD4	1,500	DMIP514300TC *	
1/4-20 x 5" SD4	1,000	DMIP514500TC *	
1/4-20 x 7" SD4	500	DMIP514700TC *	

410 Stainless Silver DMG85 Coated S2 SD3			
Miami-Dade Listing # L 20-0309.01 <small>MIAMI-DADE COUNTY LISTED</small>			
MDC Listed Sizes	Qty/Box	Part#	
#10-16 x 3/4" SD3	5,000	DMIP41075DC **	
#10-16 x 1" SD3	5,000	DMIP41010DC **	
#10-16 x 1-1/2" SD3	2,500	DMIP41015DC **	

410 Stainless Silver DMG85 Coated, S3 SD3			
Available Sizes	Qty/Box	Part#	1000hr
1/4-14 x 1" SD3	3,000	DMIP41410DC *	
1/4-14 x 2" SD3	2,000	DMIPD4314200C *	
1/4-14 x 4" SD3	1,000	DMIPD4314400C *	
1/4-14 x 6" SD3	1,000	DMIPD4314600C *	
1/4-14 x 8" SD3	500	DMIPD4314800C *	
1/4-14 x 10" SD3	250	DMIPD43141000C *	

Code Compliance

*Florida Building Code Compliant 1506.6
 **Miami-Dade County # L21-0630.03

Description

Drive: SQ2
 Material: C1022, 410SS
 Point: #10 SD2, #12 SD3, #14 SD3, SD4
 Finish: DMG85 Silver
 Substrate/Use: SD2/SD3 Steel .036"-.210"
 SD4 Steel 0.12" to 0.25"
 Thread: #10-16, #12-24 SD3, 1/4-14 SD3, #14-20 SD4
 Thread Diameter #10: Maj: .186" Min: .157"
 Thread Diameter #12: Maj: .214" Min: .186"
 Thread Diameter #14 (S3): Maj: .246" Min: .215"
 Thread Diameter #14 (S4): Maj: .247" Min: .210"
 Head Height #10, #12 .060" - .082"
 Head Height #14 .112" - .120"
 Head Diameter: #10, #12 .432" - .50"
 Head Diameter: #14 .490" - .51"
 Country of Origin: C1022 Taiwan, 410SS China

Performance Specifications

Tensile Strength (lbs ult)				
#10	#12	#14(SD3)	#14 (SD5)	
1,900	2,860	3,610	3,870	
Torsional: (in-lbs)				
#10	#12	#14(SD3)	#14 (SD5)	
76	92	150	150	
Pull out / Withdrawal Values: (lbs ultimate)				
Substrate	#10	#12	#14(SD3)	#14 (SD5)
1/8"				2,600
12 ga	1,400	1,436	1,290	1,817
14 ga	860	887	1,113	
16 ga	579	680	484	
18 ga	423		390	
20 ga				353
22 ga	216	228	263	

Corrosion Resistance

TAS114 Appendix E G85 Annex A5:1000
 Hour, ASTM B117 1000 Hour.

PAN*CON SS - MASONRY

410 Stainless Steel Panclip low profile head fastener designed for installation into predrilled masonry, concrete or wood.

Popular for window, door, roofing panel clip, Duraclad PVC panel and flashing details to concrete substrates. Also popular for use as a removable termination bar anchor into parapet wall applications. The full 410 stainless steel construction with DMG85 Silver corrosion resistant coating exceeds ASTM B117 and FBC 1506.6 standards.

Packaged in 100 piece boxes with a drill bit included.

Product Selection

410 Stainless Steel Silver DMG85 Coating			
Available Sizes	Qty/Case	Part#	
#14 x 1-1/2" SQ2	1,700	DMIPC41415T **	
#14 x 2-3/4" SQ2	1,600	DMIPC414275T *	
#14 x 4" SQ2	1,200	Discontinued	
#14 x 6" SQ2	1,000	DMIPC414600T *	

Code Compliance

*Florida Building Code Compliant 1506.6
 **Miami-Dade County # L24-0311.03



Description

Drive: SQ2
 Material: 410 Stainless Steel
 Point: Diamond, Locating
 Finish: DMG85 Silver
 Substrate/Use: Concrete, Masonry
 Thread: Hi-Lo
 Thread Diameter: Maj: .252" Min: .174"
 Head Height .07" - .09"
 Head Diameter: .49" - .51"
 Country of Origin: Taiwan

Performance Specifications

Shear:	1,306 lbs min.
Pull out / Withdrawal Values:	
1/2" OSB	290 lbs Avg
4000 PSI Concrete	790 lbs ult
CMU Block	490 lbs ult

Corrosion Resistance

TAS114 Appendix E G85 Annex A5:1000
 Hour, ASTM B117 1000 Hour.

SNAPLOCK PANEL CLIPS

Designed for secure fastening of snap lock style standing seam/concealed fastener metal roofing systems. All DMI panel clips are designed to meet FBC 1506.7 corrosion resistance requirement. Panel clips can be manufactured to fit panels from most brands and styles of roll forming machines. Please specify make and model of machine when ordering. Most styles are designed with built-in fastener relief to help eliminate panel dimpling.


675

1-3/4" Snaplock Ultra Length HD
For 1-3/4" Snaplock Panels multiple versions to fit Quadro, RF, Newtech 675, D175S Knudson, US 175
18 ga steel or SS, 2 hole, 3-1/2" width.

Gauge	Qty/Box	Part#	Height
18G Galv	250	CSN134312G18V-3	1.88"
18G SS	250	CSN134312S18V-3	1.88"



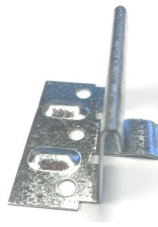
1-1/2" Snaplock Ultra Length QSL HD
Fits 1-1/2" Snaplock Panels
fits Quadro, E 1500
18 ga steel or SS, 2 hole, 3-1/2" width

Gauge	Qty/Box	Part#
18G Galv	125	CSN112312G18QV
18G Galv	125	CSN112312G18QVMOD
18G SS	125	CSN112312S18QV


1-3/4" M

1-3/4" Snaplock Ultra Lgth HD VMOD
For 1-3/4" Snaplock Panels to fit E S2000, PC Snapclad, MS Verticalseam. Modified with lower fastener relief and screw holes to accommodate XLP fasteners.
18 ga steel or SS, 2 hole, 3-1/2" width.

Gauge	Qty/Box	Part#	Height
18G Galv	250	CSN134312G18VMOD	1.88"
18G SS	250	CSN134312S18VMOD	1.88"



1-1/2" Snaplock Econo QSL LD
Fits Quadro 1-1/2" Snaplock Panels
E 1500
20 ga steel or SS, 3 hole, 2-1/4" width

Gauge	Qty/Box	Part#
20G Galv	500	CSN112214G20QV


675

1-3/4" Snaplock Econo LD
Fits 1-3/4" Snaplock Panels (1-7/8")
fits Quadro, Rollformer, Newtech 675, Knudson, E US 175
18 ga steel or SS, 3 hole, 2-1/4" width

Gauge	Qty/Box	Part#
18G Galv	400	CSN134214G18V
18G SS	400	CSN134214S18V



1-1/4" Snaplock Econo QSL LD
Fits Utility Panels, fits Quadro
24 ga steel 2" width

Gauge	Qty/Box	Part#
24G Galv	600	CSN11420G24QSLV


550

1-1/2" Snaplock NT550 HD
Fits Newtech 550, D550S
20 ga steel or SS, 2 hole, 3-1/2" width

Gauge	Qty/Box	Part#
20G Galv	250	CSN112916G20NHDV
20G SS	250	CSN112916S20NHDV



1" Snaplock Econo QSL LD
Fits Quadro 1" Snaplock Panel
24 ga steel, 2" width

Gauge	Qty/Box	Part#
24G Galv	1,000	CSN10020G24QSLV


450

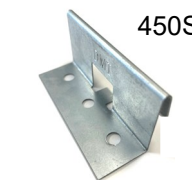
1-1/2"/1-1/4" Snaplock Newtech 450HD
no fastener relief dimples and flat tongue.
Fits 450, Plusmax, D450, SOP15
24 ga steel or SS, 3 hole, 3" width

Gauge	Qty/Box	Part#
24G Galv	500	CSN11430G24V
24G SS	500	CSN11430S24V



1-3/4" Zimmerman SL HD
For 1-3/4" Snaplock Panels multiple versions to fit Zimmerman Z175 Panels
18 ga steel or SS, 2 hole, 3-1/2" width

Gauge	Qty/Box	Part#	Height
18G Galv	250	CSN134312G18V	1.83"
18G SS	250	CSN134312S18V	1.83"


450SL

1-1/2" Snaplock 450SL HD (1-1/4")
Fits Newtech 450SL, DMC 450SL
24 ga steel or SS, 3 hole, 3" width

Gauge	Qty/Box	Part#
24G Galv	500	CSN1143SLU24GNKOV
24G SS	500	CSN1143SLU24SNKOV



1" Snaplock Rollformer Corp Clip
Fits 1" Snaplock Panels (1-1/8")
Fits Rollformer
22 ga steel or 304SS, 2 hole, 2" width

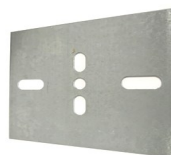
Gauge	Qty/Box	Part#
22G Galv	1,000	CSN118200G22RFV
22G SS	1,000	CSN118200S22RFV



1-1/4" Snaplock Utility Panel Clip
Fits 1-1/4", 1-1/2" Snaplock Panels
Actual clip size 1-3/8" x 2", w/dog ears
24 ga steel, 2 hole, 2" width

Gauge	Qty/Box	Part#
24G Galv	600	DMIUPCGV
24G 304SS	600	DMIUPCSV

DMI UNIVERSAL BEARING PLATES - Create a load bearing surface for panel clips or fasteners overtop of insulation boards.



Universal 4" x 5" slotted for Panel Clips

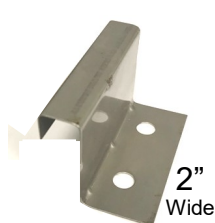
Size	Gauge	Qty/Box	Part#
4" x 5"	20ga G90	250	UBP4620GV
4" x 5"	24ga G90	250	UBP4624GV
4" x 5"	20ga 304SS	250	UBP4520S

MECHANICAL LOCK STANDING SEAM FIXED METAL PANEL CLIPS



MECHANICAL LOCK FIXED PANEL CLIPS

Designed for secure fastening of mechanical lock style standing seam / concealed fastener metal roofing systems. All DMI panel clips are designed to meet FBC 1506.7 corrosion resistance requirement. Panel clips can be manufactured to fit panels from most brands and styles of roll forming machines. Please specify make and model of machine when ordering. Most styles are engineered to give fastener relief, and heights of clips are listed in panel height. 1" tall panel would use 1-1/8" tall clip, 1-1/2" panel would use 1-5/8" clip, etc.



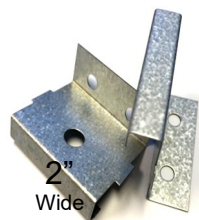
1" Mechanical Lock (1-1/8")
7/16" Top fits RF, NT, KN, D100SS,
EA1301, Galv or SS, 2 hole, 2" width

Gauge	Qty/Box	Part#
26G Galv	1,000	CMF1002716G26V
24G SS	1,000	CMF1002716S24
26G SS	1,000	CMF1002716S26



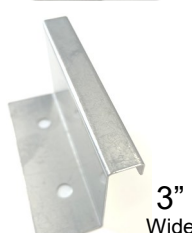
1-1/2" Mechanical Lock (1-5/8")
7/16" Top fits RF, NT, KN, EA1300, D150SS
Galv or Stainless, 2 hole, 2" width

Gauge	Qty/Box	Part#
24G Galv	1,000	CMF1502716G24V
24G SS	1,000	CMF1502716S24V
26G Galv	1,000	CMF1502716G26V
26G SS	1,000	CMF1502716S26V



1-1/2" Mechanical Lock NFR (1-1/2")
7/16" Top fits Z1500, KR12, EA1300
US 1505, D150SS 2 hole, 2" width
NFR= No built in fastener relief this
1-1/2" panel clip is 1-1/2" in height.

Gauge	Qty/Box	Part#
26G Galv	1,000	CMF1372716G26
24G SS	1,000	CMF1502716S24NFR
26G SS	350	CMF1502716S26NFR



1-1/2" Mechanical Lock HD (1-5/8")
7/16" Top fits Z1500, EA1300, KR24, RF,
US 1505 D150SS, 2 or 3 hole, 3" width

Gauge	Qty/Box	Part#
24G Galv	500	CMF1503716G24V
24G SS	500	CMF1503716S24V



2" (2-1/8") Newtech Mechanical Lock
3/4" Top fits RF, NT Ultraseam,
Knudson, E, 3 hole, 3" width.

Gauge	Qty/Box	Part#
24G Galv	600	CMF218334G24
24G SS	300	CMF218334S24



1-1/2" Mechanical Lock XHD (1-5/8")
7/16" Top fits Z1500, EA1300, KR24, RF,
US 1505 D150SS, 4 hole, 6" width

Gauge	Qty/Box	Part#
22G Galv	250	CMF1506716G22V
24G SS	250	CMF1506716S24V

EXPANSION CLIPS FOR MECHANICAL LOCK PANEL CLIPS

Designed to allow for thermal expansion while providing secure fastening of mechanical lock style standing seam / concealed fastener metal roofing systems. The expansion style clips are available in 3 different styles; one piece pre-assembled style, a two piece job site assembled and a butterfly style two piece job site assembled. All panel clips are designed to meet FBC 1506.7 corrosion resistance requirements.



1-1/2" One Piece Expansion
fits Quadro, Newtech SS150, RF VS150
2 hole, 4-3/8" width, 1/2" standoff.
Galvanized G90 Top 22ga, Base 16G.
Stainless 304S Top 24ga, Galv Base 16G
Stainless 304S Top 26ga, Galv Base 16G

Gauge	Qty/Box	Part#	Top/Base
Galvanized	100	CMEMLG150	22/16
Stainless	100	CMEMLS150	24/16
Stainless	100	CMEMLS150LD	26/16



2" Newtech 1 PC Expansion
3/4" Top fits Newtech Machines, SSQ200, NT
SS200, NT SS200, ZIM SS2000, SL/DL
2 hole, 4-3/8" width, 1/2" standoff.
Galvanized G90 Top 22ga, Base 16G.
Stainless 304S Top 24ga, Galv Base 16G

Type	Qty/Box	Part#
Galvanized	100	CMEMLG200NT
Galvanized	80	1020252
Stainless	100	CMEMLS200NT



1-1/2" Two Piece Expansion Assembled
7/16" Top fits Newtech and Quadro, SS150
5 hole, 5 base width. Ideal for wood sub-
strates, 24 ga base, 26 ga top assembled

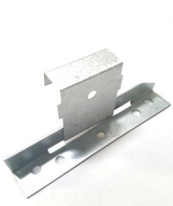
Qty/Box	Part#	24ga Base	Material
500	CMEMLG1502426	GALV	
500	CMEMLS1502426	Stainless	

Qty/Box	Part#	16ga Base	Material
500	CMEMLS1501626	Stainless	



2" Quadro 1PC Expansion
5/8" Top fits Quadro Machines
2 hole, 4-3/8" width, 1/2" standoff.
Galvanized G90 Top 22ga, Base 16G.
Stainless 304S Top 24ga, Galv Base 16G

Gauge	Qty/Box	Part#
Galvanized	100	CMEMLG200QP
Galvanized	100	CMEMLG200QPV
Galvanized	100	1069206
Stainless	100	CMEMLS200QP



2" Newtech 2PC Expansion
3/4" Top fits Newtech Machines, SSQ200
5 hole, 5 base width. Field assembly required
Ideal for wood substrates.

Desc	Qty/Box	Part#	Material
Top 24G	1,000	CMT2003416G24	GALV
Top 24S	1,000	CMT2003416S24	304 SS
Top 26S	1,000	CMT2003416S26	304 SS
Base 18G	500	CMB500G18	GALV



2" Newtech 1PC NT SS210
3/4" Top fits RF23C, ZIM SS2000, US-
200, US-200C E S2500, 2 hole, 4-3/8"
width, Galvanized G90 Top 22ga, Base
16G. Low Float Style

Type	Qty/Box	Part#
Galvanized	100	753279



DOME HEAD BLIND RIVETS

Blind rivets fasten joints without access to the reverse side of the sheet metal. DMI stainless steel rivets are manufactured of corrosion resistant 304 stainless steel. DMI SS rivets exceed the corrosion resistant standards put forth in Florida Building Code section 1506.6. DMI also offers unpainted rivets in 304 stainless steel, 316 stainless steel, aluminum and copper/brass. Rivet length is measured to the end of the rivet body. Some DMI2L 1290V (CCC)100 series rivets are painted on the "business end" on the head only so that once installed only the painted portion is exposed, some colors are dip painted which covers the "business end" and the unseen portion on the rivet.

V100 series painted rivets come packaged in card hanger packaging suitable for peg board stocking.



Product Selection

Stainless Steel Rivet 250 / bag		
<u>Sizes</u>	<u>Qty/Box</u>	<u>Part#</u>
#43 304SS	6,000	DMI2L1290CV (3)
#44 304SS	6,000	DMI2L1300CV (3)
#43 316SS	6,000	DMI43316SS (3)
Stainless Steel Rivet 100/Bag		
<u>Sizes</u>	<u>Qty/Box</u>	<u>Part#</u>
#43 Mill	5,000	DMI2L1290CV100(2)
#43 Standard Colors	5,000	DMI2L1290(color code)100 (1)
#43 Popular Colors	5,000	DMI2L1290V(color code)100(2)
Copper Rivet w/Brass Mandrel 100/bag		
<u>Sizes</u>	<u>Qty/Box</u>	<u>Part#</u>
#42 Copper	5,000	DMI2L4300C
#43 Copper	5,000	DMI2L4300C
#44 Copper	5,000	DMI2L4300C
Aluminum Rivet w/Alum Mandrel 250 / bag		
<u>Sizes</u>	<u>Qty/Box</u>	<u>Part#</u>
#43 Alum Silver	6,000	DMI2L43A1116
#43 Alum Br White	6,000	DMI2L43A014

Color Selection

V100	V100	V100	V100	R100
014 Bright White	001 White	348 Bone White	330 Warm White	553 Parchment
V100	R100	R100	V100	R100
422 Taupe/Clay	109 Sand Beige	415 Beige	248 Light Stone	548 Ivory
V100	V100	V100	V100	V100
020 Tan (STD)	629 Sierra Tan	110 Cocoa Brown	1280 Buckskin	537 Medium Bronze
V100	V100	V100	V100	V100
302 Pearl Gray	850 Ash Gray	324 Dark Bronze	042 Burnished Slate	
V100	V100	V100	V100	V100
091 Zinc Gray	051 Charcoal Gray	416 Slate Gray	1111 Mansard Brown	
R100	R100	V100	V100	
047 Colony Green	660 Hemlock	232 Evergreen	508 Patina Green	
V100	V100	R100	R100	
928 Terracotta	102 Crimson Red	798 Hartford/Fern	228 Forest Green	
R100	V100	R100	V100	
890 Red (STD)	074 Colonial Red	393 Burgundy	432 Blue Teal	
V100	V100	V100	V100	
023 Gloss Black	507 Matte Black	843 Gallery Blue	012 Caribbean Blue	
Metallics				
V100	R100	R100	V100	
Metallic Paints >	1161 Silver	1160 Champagne	1162 Zafrique	1116 Copper Penny

Description	STSS
Head:	Domed Head
Material:	304SS, 304SS Mandrell
Finish:	Unpainted or Poly Painted
Substrate/Use:	Sheet Metal
Size:	#43 #44
Rivet Diameter:	1/8" 1/8"
Rivet Length:	0.337" 0.400"
Head Diameter:	0.238" 0.238"
Head Thickness:	0.040 0.040
Country of Origin:	China(2), Taiwan(3), U.S.A.(1)

Performance Specifications

Tensile:	530 lbs
Shear:	420 lbs

Corrosion Resistance

TAS114 Appendix E G85 Annex A5:1000 Hour, ASTM B117 1000 Hour.

Code Compliance

*Florida Building Code Compliant 1506.6
**Miami-Dade County – Pending

Description	Copper
Head:	Domed Head
Material:	Copper, Brass Mandrell
Finish:	Unpainted
Substrate/Use:	Copper Sheet Metal
Size:	#42 #43 #44
Rivet Diameter:	1/8" 1/8" 1/8"
Rivet Length:	0.275 0.337" 0.400"
Head Diameter:	0.238" 0.238" 0.238"
Head Thickness:	0.040 0.040 0.040
Country of Origin:	China

Description	Aluminum
Head:	Domed Head
Material:	Aluminum
Finish:	Unpainted
Substrate/Use:	Painted
Rivet Diameter:	1/8"
Rivet Length:	0.337"
Head Diameter:	0.238"
Head Thickness:	0.040
Country of Origin:	Taiwan

Rivet Grip Ranges:

#42	0.063" - 0.125"
#43	0.126" - 0.187"
#44	0.188" - 0.250"
#46	0.313" - 0.375"
#48	0.376" - 0.500"

The color chart is representative of our standard color offerings. Colors may vary from actual product due to color variations in the catalog printing process. Actual colored product samples are available on request.

BUTYL SEALANT TAPES MEMBRANE ROLLS



Butyl*Roll PREMIUM BUTYL TAPE SEALANT ROLL

Designed for sealing and preventing the entry of moisture, air and dust into metal lap joints, Butyl*Roll has expanded to serve a wide range of applications. Unlike tube sealants, Butyl*Roll provides a consistent shaped bead, and is quick and easy to apply. Meets or exceeds the following specifications: MIL-C-18959B TIICB, TT-C-1996A TIICB, AAMA 904.3-92 and AAMA 807.3-92 and is Made in the U.S.A.

ADVANTAGES:

A premium quality sealant roll made of 100% solids, highly rubbery, sticky and easy to apply. It shows excellent performance over a wide range of temperatures and conditions. Excellent adhesion to Galvalume and Kynar 500, non-staining and permanently flexible. Butyl*Roll is mold and mildew resistant. Unlike many of the competitors Butyl*Roll is **Approved for use on Polycarbonate Panels**.

Stock Sizes	Qty/Box	Part#	Representation of profile
Single bead styles			
3/32 x 3/8" x 45'	40	DMBT3323845	
3/32 x 1/2" x 45'	32	DMBT3321245	
3/32 x 3/4" x 45'	24	DMBT3323445	
3/32 x 1" x 45'	20	DMBT332145	
1/8" x 1" x 45'	14	DMBT18150	
1/8" x 2" x 50'	4	DMBT18250	
Double bead styles			
3/16 x 7/8" x 40'	10	DMBT31678D	
Triple bead styles			
3/16 x 7/8" x 25'	14	DMBT31678M	
3/16 x 2-1/2" x 20'	6	DMBT3162122	



MADE IN
USA

3/8"
Shown

BT-13 BUTYL TAPE SEALANT ROLL

BT-13 / Butyl*Roll TP-13 is the second DMI formularization of elastomeric butyl tape formulated for use in the metal building industry. BT-13 is a non-drying compound that does not stain and remains permanently flexible. In addition to providing superb adhesion to a variety of substrates, this material also prevents or reduces galvanic corrosion, electrolysis, noise transmission, and thermal transfer vibration. BT-13 is different than standard Butyl*Roll in that it offers more 200% more elongation and a slightly stringier consistency. BT-13 is **not** approved for use on Polycarbonate Panels.

ADVANTAGES:

BT-13 is mold and mildew resistant.
Service Temp -40degF to 180 degF
ASTM D412 Elongation 1000%
18 month shelf life.
Made in the U.S.A.



MADE IN
USA

Single Bead

Size	Box Qty	Part #
3/32" x 3/8" x 45'	16	DMBT133323845
3/32" x 3/8" x 45'	24	DMBT13332384524
3/32" x 1/2" x 45'	16	DMBT133321245
3/32" x 1/2" x 45'	24	DMBT13332124524
3/32" x 3/4" x 45'	16	DMBT133323445
3/32" x 1" x 45'	14	DMBT13332145

Double Bead

Size	Box Qty	Part #
3/16" x 7/8" x 40'	14	DMIBT1331678D

Triple Bead

Size	Box Qty	Part #
3/16" x 2-1/2" x 20'	6	DMBT133162122

DMI T3 ECONO BUTYL TAPE - BLACK TAPE

T3 Econo butyl tape is the 3rd formularization of elastomeric butyl tape formulated specifically for use in the HVAC, curtain wall & sheet metal industry. This tape has more fillers than typical Butyl*Roll tapes allowing it to be our price leader. The color is black

MADE IN
USA



ADVANTAGES:

Low cost, American Made
Service Temp -40degF to 180 degF, Tensile Strength 12-14 PSI, Shelf Life 2 yrs.
ASTM D412 Elongation 600%, Odorless.

Single Bead

Size	Box Qty	Part #
3/32" x 3/4" x 50'	14	DMBTERVTB33203450
3/32" x 1" x 35'	16	DMBTERVTB33210035

Multi Bead

Size	Box Qty	Part #
3/16" x 7/8" x 20' T	16	DMBTERVTB31607820
3/16" x 2-1/2" x 20'	8	DMBTERVTB31625020

Sold in full pallets only, 2 pallet minimum for production, 24 boxes per pallet, Made to order.

DMI30 SSR SEALANT NON-SKINNING STANDING SEAM SEALANT

DMI30 is a non-hardening, self-healing sealant that provides superb adhesion in all conditions; including extreme temperatures and moisture levels. DMI30 does not string during application, and exhibits outstanding webbing and cut-off characteristics. DMI30 is intended for concealed application away from sunlight. This material remains permanently tacky and flexible after curing, and provides a long-lasting and resilient seal.

Packaging: (30) 10.1oz plastic tubes / case, Part# N104001TDMI



Product Uses: DMI30 adheres to a wide variety of substrates, and as such serves as a trusted sealant in a multitude of markets. In the metal building industry, DMI30 is often used as a standing seam sealer. It adheres to painted metals, Zincalume, Galvalume, and Kynar 500. DMI30 is also used as a joint sealant in foam glass applications. Not for applications that expose the sealant to sunlight.

DMI PIPE FLASHINGS FOR METAL ROOFING - UNIVERSAL ROUND BASE

Used to waterproof roof penetrations in metal roofing panels. Made of pliable rubber with a 20 year limited warranty. Our flashings feature an aluminum fastening ring with grooved sealant holding base that is adjustable to most common roof pitches. These parts are 100% North American Made. The #3 pipe flashings have a UPC Approval and Florida Building Code.

Standard (STD) flashings are made of Light Gray E.P.D.M. rubber with an application temperature range of -67 degF to 212 degF

High Temperature (High Temp) flashings are made of gray or red silicone with an application temperature range of -101 degF to 437 degF.

Size	Fits Pipes	Base	Qty/Box	STD Grey
#1	0.25" - 2.5"	4.75"	15	DML1GR
#2	1.75" - 3"	6.25"	15	DML2GR
#3	0.25" - 5"	7.75"	15	DML3GR
#4	3" - 6.25"	9.25"	10	DML4GR
#5	4.25" - 7.75"	10.5"	10	DML5GR
#6	5" - 9"	13"	10	DML6GR
#7	6" - 11"	14.5"	10	DML7GR
#8	7" - 13"	16.5"	5	DML8GR
#9	9" - 19"	25-1/4"	5	DML9GR
#10	12" to 28"	34" square	5	DML10GS

STD Black
DML1BR
DML2BR
DML3BR
DML4BR
DML5BR
DML6BR
DML7BR
DML8BR
DML9BR

High Temp Grey
DML1HTG
DML2HTG
DML3HTG
DML4HTG
DML5HTG
DML6HTG
DML7HTG
DML8HTG
DML9HTG
DML10HTR

High Temp Red (Special order)
DML1HT
DML2HT
DML3HT
DML4HT
DML5HT
DML6HT
DML7HT
DML8HT
DML9HT

#3 COLORS PIPE FLASHINGS FOR METAL ROOFING

Now available in 14 colors to complement popular metal roofing panel color choices.

Used to waterproof roof penetrations in metal roofing panels. Made of pliable rubber with a 20 year limited warranty. Our flashings feature an aluminum fastening ring with grooved sealant holding base that is adjustable to most common roof pitches. The #3 fit pipes 1/4" up to 5" in diameter and have an 8" round base. These pipe flashings have a UPC Approval and Florida Building Code Approval.

Color
Black
Bright Red
Cocoa Brown
Charcoal
Copper
Dark Blue
Dark Bronze
Dark Green
Light Blue
Medium Bronze
Tan
Taupe / Clay
Terracotta
White

Part#
DML3BR
DMLRD301BR
DMLRD301BN
DMLRD301NG
DMLRD301CP
DMLRD301DB
DMLRD301324
DMLRD301DG
DMLRD301LB
DMLRD301537
DMLRD301TAN
DMLRD301422
DMLRD301TC
DMLRD301WT

DMI SQUARE BASE RETROFIT FLASHINGS

Designed to waterproof electrical conduit, masts, service poles and collared pipe penetrations through metal roofing panels. Includes corrosion resistant band and rivets for fastening. Accurate side markings make it easy to cut for a specific size. Light gray, square base E.P.D.M. rubber construction with UPC approval and 20 year warranty. Standard color is gray, however these parts are available by special order in black E.P.D.M. or red high temp silicone. 100% North American Made.

FL 28400.3 R1

GREY E.P.D.M.

Size	Fits	Base	Qty/Box	Part#
#101	1/2" - 4"	8"	5	DML101G
#201	4" - 9-1/4"	14"	5	DML201G
#301	9-1/4" - 16-1/4"		5	DML301G

RED HIGH TEMP SILICONE

Size	Fits	Base	Qty/Box	Part#HT
#102	1/2" - 4"	8"	5	DML102H
#202	4" - 9-1/4"	14"	5	DML202H
#302	9-1/4" - 16-1/4"		5	DML302H

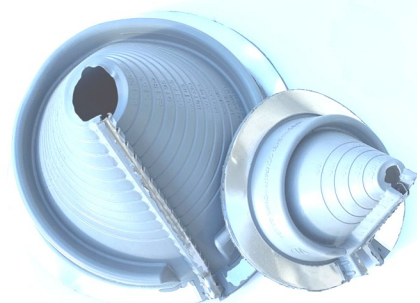
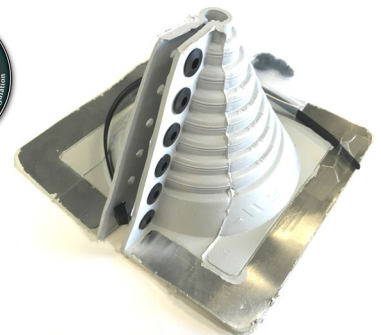
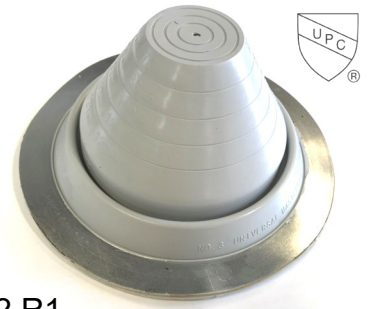
DMI ROUND RETROFIT FLASHINGS - (Zipperboot)

Designed to waterproof electrical conduit, masts, service poles and collared pipe penetrations through metal roofing panels. Stainless steel fastening teeth interlock with the rubber for fastening at the split. E.P.D.M. rubber construction with UPC approval and 20 year warranty. Standard gray to be used on mill finish metal roofing. #802 are available for special order in black EPDM or a white high temperature silicone.

Size	Fits	Base	Qty/Box	Part#GR
*#1	1/4" - 2-3/4"	6-3/10"	10	DM801G
*#2	2" - 7-1/4"	10-3/4"	10	DM802G
*#3	3-1/4" - 10"	14-1/2"	5	DM803G

Size	Fits	Base	Qty/Box	Part#WT
#802	2" - 7-1/4"	10-3/4"	5	DM802W

#802 White High Temp is not North American Made and is made of white silicone <500 deg F.



SIDE WALL FLASHING

This low profile flashing is available in standard or retrofit (as shown). This is designed to flash in pipe or wire penetrations in metal sidewall penetrations. Available in Gray or Black EPDM in standard and white silicone in a high temperature retrofit version.

Packaged 10 pcs/box
Special order / Made to order.



MR VENT-FLASH

Designed to flash turbine vents, roof exhaust fans and goose neck vents. Inside opening 11.75" x 11.75" outside base is 24" x 24". Adaptable base designed to mold to most panel configurations and roof pitches. Made of UV protected EPDM that has an application temperature range up to 212 degF. Standard parts are gray.

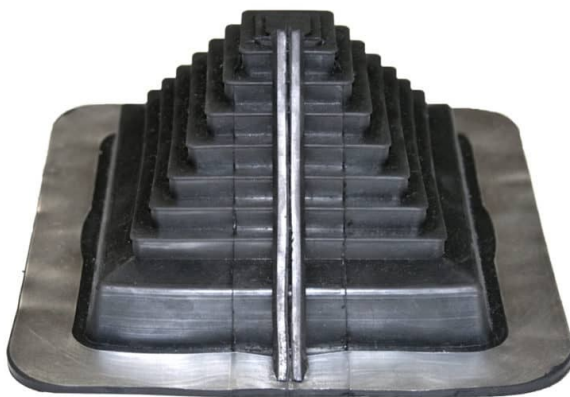
Packaged 1/box , Part# DMLVFLG24



MULTI-FLASH SQUARE VENT, SQUARE PIPE BOOT

Fits standard square pipes and vents from 3/4" to 5" and retrofit applications for 1-1/2" up to 4". High quality black E.P.D.M. with 20 year warranty. Adaptable base and no hassle stainless steel gripper to secure in retrofit applications. Square base.

Packaged 10 pcs/box
Part# DMLFSQ101BA



CAP FLASHINGS **MASTERCAP & RIBCAP**

Designed to seal up-slope profile ends. Popular applications such as: HVAC curb penetrations, skylight curb penetrations and chimney flashing points.

The MASTERCAP1 measures 3" high x inner Depth of 2" and Base width of 4-1/2" will accommodate many standing seam metal roofing profiles from 1-1/4" to 3" and popular commercial roofing panels with an 1-1/4" to 2" tall rib such as MR12 / R Panel / PBR Panel. (Old Part#DSLHC101BA/GA, DMLMC051/MC101NG) *** New Part number and packaging, **Packaged 20 pcs per box Gray part# MC101BA**

THE RIBCAP is designed specifically for 3/4" rib profile ends. **Packaged 10 pcs per box Part# DMRIBCAP** Size: 3/4" overall height x inner wall width 2" inner depth of 2-3/4".



Gray E.P.D.M.

LIGHTNING ROD PIPE FLASHING

Designed to weatherproof lightning rod or wire penetrations through metal roofing panels or ridge caps. Easy to use, with the perfect low profile design. Also used in some solar stand applications on metal roofing. Packaged 40 pieces per box. Imported. Fits 0" to 1-3/8" Part# DM1RRG



END CAP FLASHING

Constructed of gray E.P.D.M. with a 20 year warranty. Applications include skylight, cupola and ridge ends. Flexible, corrosion resistant aluminum base conforms large standing seam and trapezoidal metal roof panels. Imported. 10 pcs per box

Part# DM1DC1



FIX-A-FLASH MASTERFLASH

Solution for smaller pipes with an oversized hole in your metal panel, and solution for overflash application of old pipe flashings. E.P.D.M. Black 20yr warranty rubber and adaptable base. Fits 0" to 15" pipes with a 19-1/2" base. Buy American Plan.

5 pcs per box Part# FF851BC



MULTI-PORT MASTER FLASH™

Easy to use 4 in 1 flashing, up to 4 cables or wires per flashing. Stainless steel gripper to secure in retrofit applications. Accommodates four 1/4" lines and 1 pipe 1/4" - 2-3/4". B.A.P.

Black E.P.D.M.
10/box
DMLMP101BA

Red high temp
10/box
DMLMP102RA



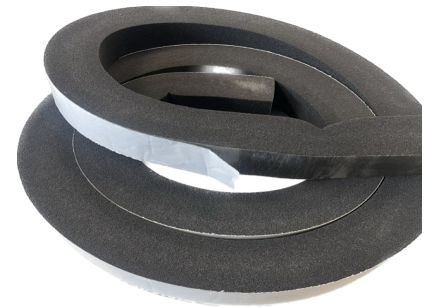
DIRECT*SEAL LONG LIFE UNIVERSAL CLOSURE ROLLS

Universal closure rolls designed to seal gaps in metal roofing, window and door installations. When compressed, Direct*Seal will become a water, pest, wind, and dust barrier in valley, hip and other panel to panel or panel to trim applications. Direct*Seal can also be used to close in gaps around windows and doors to help increase the energy efficiency of your building. Direct*Seal comes fully expanded in a single wrapped roll and is compressed at time of application.

Application Guide: Compression of the product is required to achieve the following:
 25% Compression required for dust & sound protection, pest resistance and thermal insulation.
 50% Compression required for wind, air and rain protection up to 20 psf.

Advantages:

- UV protected foam with no asphalt content (non-streaking, non-staining)
- Designed for any pitch from 2/12 to 20/12
- Will not scratch panel finishes
- Easy to apply with a full width peel back adhesive strip



Available Sizes	Qty/Box	Part#	MADE IN USA
1" x 1" x 20'	20	DDS101020	
1-1/2" x 1-1/2" X 20'	10	DDS151520	
2" x 2" x 10'	10	DDS202010	

BG1 EXPANDING UNIVERSAL CLOSURE ROLLS

Precompressed, self-expanding polyurethane foam with acrylate dispersion impregnation. Used for sealing joints and seams in metal panels, gaps around door and window frames and expansion joints in buildings/construction. Ships in a compressed roll, expands to fill gaps between mechanically fixed panels and trim. Typical expansion occurs in 8-10 hours. Made in Europe.

Application Guide: Compression of the product is required to achieve the following:

20% Compression required for dust & sound protection, and thermal insulation
 50% Compression required for wind, air, dust & sound resistance, and insulation
 70% Compression required for rain protection up to 6.25 psf
 80% Compression required for rain protection up to 21.57 psf



Available Sizes	Qty/Box	Part#
(1/4) 1" x 1" x 20'	12	DMI21305091
(3/8") 1" x 1-1/2" X 15'	12	DMI21305092

Full carton sales only. Color: Black

FILLERSTRIP DIE CUT CLOSURE STRIPS

Die cut foam closure strips with UV inhibitors. Designed to fit popular profiles and close the gap between trims and panels. Each piece is cut to fit specific panel profiles and most are made to your panel width. Available with or without adhesive for an easy, quick, and accurate installation. Flat block rectangular shaped closure strips available to fit standing seam metal roofing panels.

Outside closures:

fit at the ridge line between the outside of the panel and the ridge cap.

Inside closures:

fit at the eve of the roof to seal the inside of the panel profile.

Available Sizes	Qty/Box	With Adhesive	Without Glue
5V inside	100	DCL5VIG	DCL5VIN
5V outside	100	DCL5VOG	DCL5VON
3/4"rib inside	100	DCL3436IG	DCL3436IN
3/4"rib outside	100	DCL3436OG	DCL3436ON
PBR/MR12 inside	100	DCL1236IG	DCL1236IN
PBR/MR12 outside	100	DCL1236OG	DCL1236ON
PBU inside	100		799605
PBU outside	100		799609
2.67 Corrugated	100		799405
4.2 Corrugated	100		799414
7.2 Corrugated	100		799433
1" x 1" x 40" Block	100		DMI2T0003AB
1" x 1.5" x 36" Block	100		DMI2799390



RAZORBACK RIDGE VENT PLUS

Long life universal ridge vent rolls for metal roofing panels. Quick and easy installation directly to ridge cap with full width positioning adhesive tape strip. Long term heat resistant coatings and flame retardants for extended product life. Full width adhesive designed for higher adhesion in cold climates. Made in the U.S.A. with all American Made components. This product has not been tested for Building Code Compliance, not for use in the State of Florida. Please allow a minimum of 25% compression on installation. Standard Razorback ridge vent is available with FBC testing approval #, inquire with your salesperson if desired.

Advantages include:

- Inexpensive, quick and easy to install
- 40 year limited warranty, with fire retardant longlife coatings
- Designed for many roof panel configurations and pitches from 2/12 to 20/12
- Low profile attractive installed appearance
- Does not scratch painted metal surfaces



Available Sizes	Qty/Box	Part#	MADE IN USA
1-1/2" x 2" x 10'	10 **	DMIRB1122010P	
1-3/4" x 2" x 10'	10 **	DMIRB1342010P	
2" x 2" x 10'	10 *	DMIRB2002010P	
2.12" x 2" x 10'	10 *	DMIRB2122010P	

Flat Top * , With Expansion Fingers **

Quick and easy, designed for original or retrofit installations



DOUBLE LAYERED HAND SEAMERS

Professional series hand seamers with double-layered non-slip handles and long-lasting heat-treated steel jaws.



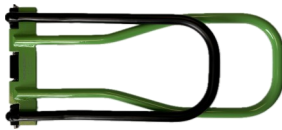
Double-Layered Hand Seamer		
Description	Part#	Qty/Box
1" x 3"	03-535	2/36
1" x 6"	03-539	2/24
1" x 9"	03-540	2/16
1" x 12"	03-541	2/12
2" x 3"	03-549	2/12
2" x 6"	03-546	2/12
3" x 6"	03-547	2/24
4" x 6"	03-511	2/12
4" x 9"	03-512	2/8



Double-Layered Angled Hand Seamer		
Description	Part#	Qty/Box/Case
1" x 3" 45 deg	03-528	2/36
1" x 6" 45 deg	03-530	2/24
1" x 3" 90 deg	03-529	2/36
1" x 6" 90 deg	03-531	4/24

DOUBLE STAGE LOCKING SEAMER

2-in-1 locking seamer for standing seam roof applications. This tool combines the two stages of a double lock seam into a single tool. Powder-coated Steel for durability, lightweight and easy to use.



Double-Stage Locking Seamer		
Description	Part#	Qty/Box
DSLS	03-522	1

FOLDING BARS

Designed as two steel plates welded together with slits running along the length. Perfect for 3/8" and 1" bends.



Folding Tool Description	Part#	Quantity/Box/Case
12"	03-532	4/24
18"	03-533	3/18
24"	03-534	2/12

STANDING SEAM HEMMING TOOLS

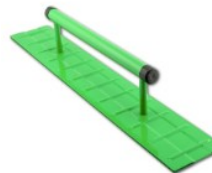
Hemming tools are designed to facilitate the quick and precise hemming of metal panel edges for standing seam roofs and can be used to close the high side of panels. Constructed from 10 ga steel and powder-coated for durability. Makes 1" or 1-1/2" bends in metal up to 10" wide, 1/8" throat gap allows use with up to 15 ga material.



Hemming Tool Description	Part#	Quantity/Box/Case
1" x 14.5"	03-560	2/12
1-1/2" x 17.25"	03-561	2/12
1-1/2" x 19"	03-562	2/12
1-1/2" x 20"	03-563	2/12

DRIP EDGE AND VALLEY BENDERS

High leverage Drip Edge Benders are designed to make bends in metal panel edges. Two-handed bar handle design allows two handed use for extra leverage. Lightweight and can easily be used overhead on installed panels to bend up to 18ga material. Constructed from 14 ga steel and powder-coated for durability. Makes 1" or 1-1/2" bends in metal up to 10" wide, 2mm throat gap allows use with up to 18 ga material.



Drip Edge Bender Description	Part#	Quantity/Box
18"	03-564	2
24"	03-565	2
36"	03-566	2

HAMMERS' & HATCHETS

18OZ TINNERS' HAMMER

The perfect hammer for light to medium duty jobs and works well for striking common and finishing nails. Forged single piece steel head and handle for unsurpassed strength and durability. Finely polished head creates a smooth surface. Bonded shock reduction grip reduces shock significantly and lowers hand and arm fatigue. Part # 04-880 6 per box, 18 per case.



16OZ CLAW HAMMER

Standard multi-purpose claw hammer with a forged steel head and fiberglass handle. Durable forged steel head. Super strong, ultra-light and anti-vibration fiberglass ergonomic handle. Sharp claw for precision and efficiency, ideal for masonry, walls, bricks and concrete. Part # 04-175



16OZ HICKORY SHINGLING HATCHET

Durable construction, lightweight and ergonomic handle design. High carbon steel head with hardened face, premium hickory handle with lacquered finish. Fixed blade and replaceable gauge, triple wedge construction and milled face. Premium hickory handle, flame and lacquer finish. Part # 04-442 1 per box, 24 per case.





AVIATION SNIPS

Ideal snips for cutting light stock. High-quality chrome-vanadium alloy steel. Rubber comfort grip handles and safety latch. Non-slip serrated jaws for efficient cutting, spring action for fast, effortless feed. Standardized handle colors are easy to identify.

	Aviation Snips		Quantity
	<u>Description</u>	<u>Part#</u>	<u>Box/Case</u>
	Straight Cut	36-317	6/48
	Left Cut	36-318	6/48
	Right Cut	36-319	6/48



OFFSET LONG CUT AVIATION SNIPS

Offset snips with 3" blades ideal for long cuts. Ideal snips for cutting light stock. Rubber comfort grip handles and safety latch. Non-slip serrated jaws for efficient cutting, spring action for fast, effortless feed. Standardized handle colors are easy to identify.

	Offset Long Cut Snips		Quantity
	<u>Description</u>	<u>Part#</u>	<u>Box/Case</u>
	Offset Long Left Cut	36-323	6/36
	Offset Long Right Cut	36-324	6/36



OFFSET AVIATION SNIPS

Offset jaws to keep hands up and away from sharp metal edges. Ideal snips for cutting light stock. Rubber comfort grip handles and safety latch. Non-slip serrated jaws for efficient cutting, spring action for fast, effortless feed. Standardized handle colors are easy to identify.

	Offset Aviation Snips		Quantity
	<u>Description</u>	<u>Part#</u>	<u>Box/Case</u>
	Straight Cut	36-328	6/48
	Left Cut	36-327	6/48
	Right Cut	36-329	6/48

VERTICLE OFFSET AVIATION SNIPS

Vertical offset ships ideal for increased reach in overhead projects, tight spaces or ground level cutting. Cut straight and left curves in 24 gauge cold-rolled steel and 28ga stainless steel. Offset blades keep hands safely away from material and provide increased reach in tight situations.

	Aviation Snips		Quantity
	<u>Description</u>	<u>Part#</u>	<u>Box/Case</u>
	Vertical Offset Left Cut	36-325	6/36
	Vertical Offset Left Cut	36-326	6/36


TINSNIPS

Ideal for cutting low carbon cold-rolled steel. Cut straight and wide curves when trimming light gauge stock. Cushion grip and hand-edged forged steel blades.

	Tin Snips		Quantity/
	<u>Description</u>	<u>Part#</u>	<u>Box/Case</u>
	8" Tinsnips	36-352	6/24
	10" Tinsnips	36-353	5/30
	12" Tinsnips	36-354	6/24



DRILL-OPERATED AVIATION SNIPS

Converts a power drill into aviation snips. Has applications in metal roofing, building panels, metal duct work and sheet metal. Comes as a complete kit, snip attachment, 1 nut, 3 screws, 2 drill clamps, 1 soft grip hand, 5mm and 10mm wrench.

	Drill-Operated Aviation Snips		Quantity
	<u>Description</u>	<u>Part#</u>	<u>Box/Case</u>
	Kit	36-320	1



MULTI-PURPOSE/MULTI FUNCTION SHEARS SCISSORS

Shears are ideal for cutting sheet metal and leather, stainless steel serrated blade, lightweight and durable. Multi-Function Scissors are ideal for cutting sheet metal, polycarbonate, and plastic.

	Shears		Quantity/
	<u>Description</u>	<u>Part#</u>	<u>Box/Case</u>
	8" Multi Purpose Straight	36-480	6/36
	8" Multi Function	36-481	6/36
	10" Multi Purpose Offset	36-480	6/36


ALUMINUM & ALUMINUM COMPOUND SCISSORS

Ideal for vinyl siding and can be used to cut sheet metal, roofing materials, plastic and canvas. Cuts straight right and left curves in up to 22 ga cold-rolled steel or .032 aluminum. 3" cutting length and multiple handle openings. Blue compound style has protruding blade for tighter cuts.

	Aluminum Scissors		Quantity/
	<u>Description</u>	<u>Part#</u>	<u>Box/Case</u>
	12"	36-374	3/24
	14"	36-375	4/24
	12" Compound	36-373	4/24


HAND RIVET GUN

Ideal for pulling blind rivets. Rubber grip handles, 4 size adjustments.

	Rivet Gun - Hand Riveter		Quantity/
	<u>Description</u>	<u>Part#</u>	<u>Box</u>
	Rivet Gun	36-300	6

SNAP LOCK PUNCH

Makes tabs in the cut edge of a siding panel used as a finishing course. Punch impression spaced 3/8" for edge of metal. Non-slip vinyl cushion handle.

	Snap Lock Punch		Quantity/
	<u>Description</u>	<u>Part#</u>	<u>Box</u>
	SLP	33-640	6/48



Customer Support: Telephone
Customers Service: 239-599-8527
Credit Services: 239-599-8527 ext. 27
Account Receivable: 239-599-8527 ext. 14

Email
orders@directmetalsinc.com
credit@directmetalsinc.com
ar@directmetalsinc.com

Galvalume Goose Neck Vents

Assembled with a removable screen, peel back underside adhesive. Quality galvalume construction, now available with or without damper. Made in the U.S.A. No warranty, no returns on this product. This product has no approvals or testing, please check with your local building department before ordering.

10" Tall x 10" deep x width.

Standard stock sizes are 4" and 10" other widths can be made to order.

Also available to be made to order in copper, aluminum or in painted colors of galvalume. Made in the U.S.A.



Without Damper

Size	Qty/Box	Part #
4"	14	DMI4GNVCOGLMES
10"	6	DMI10GNVCOGLMES

With Damper and Screen

Size	Qty/Box	Part #
4"	14	DMI4GNVDPCOGLMES
6"	10	DMI6GNVDPCOGLMES
10"	6	DMI10GNVDPCOGLMES

NOTES:

2025 Sales Policies and Conditions:

Direct Metals, Inc. has worked diligently to set up a distribution network including wholesale roofing supply locations, building products distributors, and OEM Manufacturers. As DMI is not set up for one time purchases or direct to market sales to the public, building owners, builders, contractors, installers or end users, we rely on this network to bring our products to market. Direct Metals, Inc. sells materials directly to our registered distributor network. We do not offer direct sales however we can assist you in finding the right product and your closest distributor.

Return Policy:

All DMI distributors have the right to set their own policies with their customers including but not limited to: return, re-stock, pricing and terms of sale. DMI policy to our distributors is that all sales are considered final (**ALL SALES FINAL**). No returns on sales older than **45 days**, regardless of circumstance. Prior approval from Direct Metals, Inc management is required for any and all returns. If DMI management will accept a return, it must be a standard stock product returned in original un-opened packaging, with a non-negotiable restocking fee. Any painted or special order product sales are final, no returns. No returns on items 2' or larger in any dimension including translucent panels, termination bar, windows and doors. **Re-stocking fee is 25% of the invoice amount**, in addition to all shipping costs to send original shipment and return product to a Direct Metals, Inc service center. All credits for qualifying returns will be given in the form of an account credit against new purchases. **No cash refunds available**

Information Policy:

DMI works to maintain to the best of our abilities, correct and current information in our catalogs and on our websites. However data and information on our products and services can quickly become out of date without prior warning. Part numbers and box labels may change or vary from this catalog or DMI websites. The information presented is from sources believed to be reliable but no warranty (expressed or implied) is made regarding accuracy, adequacy, completeness, legality, reliability or usefulness of any of the information contained within this catalog or DMI websites.



3 REGIONAL SERVICE CENTERS TO PROVIDE FAST SERVICE ON QUALITY PRODUCTS

Mid-Atlantic U.S.A.



South Eastern U.S.A.

North Eastern U.S.A.



Mid Western U.S.A.

South Central U.S.A.



South Western U.S.A.

Corporate Offices :

Ft Myers, FL 33905 Toll Free: 855-800-8878

Southeast Service Center:

1719 Baseline Ct. Ft Myers, FL 33905

Midwest Service Center:

1800 Jim Neu Drive, Suite 3 Plymouth, IN 46563

South Central Service Center:

16501 Central Green Boulevard, Suite 200 Houston, TX 77032

Low Slope Roofing Fastener Service Center:

4244 Edison Ave. Ft Myers, FL 33916

Residential Roofing Flashing Service Center:

4244 Edison Ave. Ft Myers, FL 33916

Customer Support:

Telephone

Email

Customers Service:

239-599-8527

orders@directmetalsinc.com

Credit Services:

239-599-8527 ext. 27

credit@directmetalsinc.com

Account Receivable:

239-599-8527 ext. 14

ar@directmetalsinc.com

Your distributor is:

