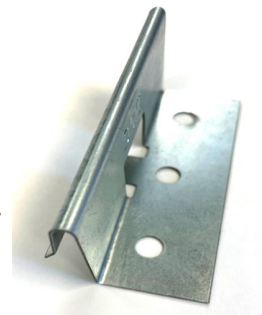
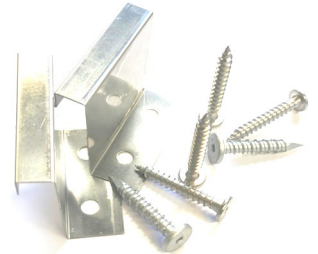
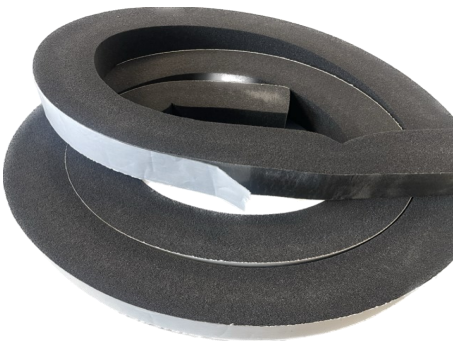




**STANDING SEAM CONCEALED
FASTENER PANEL
PRODUCT CATALOG
JUNE 1, 2023**





Toll Free Phone: 855-800-8878
Toll Free Fax: 855-800-8877
www.directmetalsinc.com

This catalog features products superficially of interest to standing seam panel manufactures.

How can DMI help you?

Increase ordering efficiency:

DMI can offer the efficiency of many different accessory products from fasteners to pipe flashings, insulation to skylights, that can be shipped together. The efficiency of one shipment, one purchase order, and one customer service contact results in: lower costs, less paperwork, and less mistakes.

Decreasing lead times:

DMI can offer next day shipping on most of our in-stock products to registered distributors. This allows distributors to carry lower stocking levels that can be replenished in a days notice instead of the cost of carrying months of inventory.

Access to approved and tested products:

DMI maintains one of the most diverse collection of fasteners and accessory product offerings for the roofing market. DMI put an emphasis on top performing products tested to withstand harsh environments, with many certifications, listing and approvals to conform to various building codes all across America.

2023 Sales Policies and Conditions:

Direct Metals, Inc. has worked diligently to set up a distribution network including wholesale roofing supply locations, building products distributors, and OEM Manufacturers. As DMI is not set up for one time purchases or direct to market sales to building owners, builders, contractors, installers or end users we rely on this network to bring our products to market. Direct Metals, Inc. sells materials directly to our registered distributor network. We do not offer direct sales however we can assist you in finding the right product and your closest distributor.

Return Policy:

All DMI distributors have the right to set their own policies with their customers including but not limited to: return, re-stock, pricing and terms of sale. DMI policy to our distributors is that all sales are considered final (ALL SALES FINAL). No returns on sales older than 45 days, regardless of circumstance. Prior approval from Direct Metals, Inc management is required for any and all returns. If DMI management will accept a return, it must be a standard stock product returned in original un-opened packaging, with a non-negotiable restocking fee. Any painted or special order product sales are final, no returns. No returns on items 2' or larger in any dimension including translucent panels, termination bar, windows and doors. Re-stocking fee is 25% of the invoice amount, in addition to all shipping costs to send original shipment and return product to a Direct Metals, Inc service center. All credits for qualifying returns will be given in the form of an account credit against new purchases. No cash refunds available

Information Policy:

DMI works to maintain to the best of our abilities, correct and current information in our catalogs and on our websites. However data and information on our products and services can quickly become out of date without prior warning. Part numbers and box labels may change or vary from this catalog or DMI websites. The information presented is from sources believed to be reliable but no warranty (expressed or implied) is made regarding accuracy, adequacy, completeness, legality, reliability or usefulness of any of the information contained within this catalog or DMI websites.

Order Entry & Questions:
orders@directmetalsinc.com

PANCLIP XLP - The XLP is for applications that demand an extra low profile head that almost sits flush with the sheet metal that it is securing. Designed primarily for the installation of nail-strip / nail-fin standing seam metal roofing panels. The XLP can be used in many other applications that require an extra low profile installed finish with more holding or bearing surface than a PFH flat head fastener can provide.

PANCLIP XLP MTW NAILSTRIP FASTENER

With extra low profile pancake wafer head for installing nail strip style standing seam panels into wood substrates. XLP MTW comes standard with DMG85 Silver corrosion resistant coating designed to exceed Florida Building Code and Miami-Dade County requirements. The XLP's larger #12-8 diameter provides superior holding strength vs. competing #10 fasteners into wood substrates. The XLP has a sharp point and #2 Square drive for ease of installation. Packaged 250 pcs / bag.



XLP MTW 1000HR DMG85, SQ2, SP, Dade Listed		
Available Sizes	Qty/Box	Part#
#12-8 x 1"	5,000	DMIPXLP121SD
#12-8 x 1-1/2"	2,500	DMIPXLP1215SD
#12-8 x 2-1/2"	1,500	DMIPXLP1225SD



L 21-0630.04

PANCLIP XLP SS STAINLESS STEEL NAILSTRIP FASTENER

The XLP SS is made of passivated 304 Stainless Steel for corrosion protection. The XLP head is made as low profile as possible to provide a pleasing installed appearance. The XLP has a sharp point and #2 Square drive for ease of installation. Packaged 250 pcs / bag.



XLP SS MTW 304 Stainless Steel, SQ2, SP		
Available Sizes	Qty/Box	Part#
#12-8 x 1"	304SS 5,000	DMIPXLP121SS
#12-8 x 1-1/2"	304SS 2,500	DMIPXLP1215SS
#12-8 x 2-1/2"	304SS 1,500	DMIPXLP1225SS

PANCLIP XLP ECONO NAILSTRIP FASTENER

The #10-13 XLP is carbon steel and zinc plated with an additional DMG85 Blue Coating to meet Florida Building Code fastener corrosion resistance standards. The #10-13 XLP SS Econo is made of passivated 304 Stainless Steel with a DMG85 silver barrier coating for corrosion protection and protection against dissimilar metal reactions. The XLP head is made as low profile as possible to provide a pleasing installed appearance. The XLP has a sharp point and #2 Square drive for ease of installation. Packaged 250 pcs / bag.



XLP Econo Blue DMG85, SQ2, SP		
Available Sizes	Qty/Box	Part#
#10-13 x 1-1/8"	3,500	DMIPX10118BA
#10-13 x 2"	2,000	DMIPX10200BA

XLP SS ECONO 304 Stainless Steel, SQ2, SP		
Available Sizes	Qty/Box	Part#
#10-13 x 1-1/8"	3,500	DMIPX10118SS
#8-8 x 2-1/2"	1,500	DMIPX8250SS

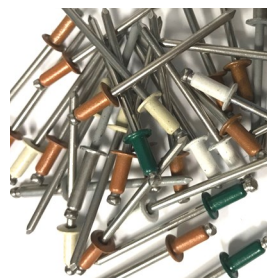
NAILSTRIP SEAM ADHESIVE, BOSS 185



A one component, high performance adhesive/sealant formulated with USP™ technology. Provides excellent durability, maximum adhesive strength and is VOC compliant in 50 states. Contains no isocyanates solvents halogens or acids. It is a moisture curing sealant that remains flexible, even at low temperatures with quick grab strength and excellent adhesion to various substrates such as aluminum, steel and painted metal. This sealant has been tested for adhesion in multiple FBC approved nail strip standing seam systems to provide holding power at the nail strip seam. White in color: **Packaging:** weatherproof 10 oz cartridges, 12/case, Part # 18501 SKU 143121

#43 & #44 BLIND RIVETS

Blind rivets fasten joints without access to the reverse side of the sheet metal. DMI #43 painted stainless steel rivets are manufactured of corrosion resistant 302 / 304 stainless steel. DMI SS rivets exceed the corrosion resistant standards put forth in Florida Building Code section 1506.6. DMI also offers unpainted rivets in 304 stainless steel, 316 stainless steel, aluminum and copper/brass. Rivet length is measured to the end of the rivet body. A #43 rivet has a 1/8" dia body with a 5/16" length. Its grip range is material from .12" to .187" (1/8" - 3/16"). 44 colors of #43 stainless steel rivets in 100 piece bags.



250/bag, 6000/bx	Part#
#43 304SS	DMI2L1290CV
#44 304SS	DMI2L1300CV
#43 316SS	DMI43316SS
#43 Copper	DMI2L4300C
#43 Alum Silver	DMI2L43A1116
#43 Alum Br White	DMI2L43A014
100/bag, 5000/bx	Part#
#43 Mill	DMI2L1290C-100M
#43 Mill	DMI2L1290CV100
#44 Mill	DMI2L1300-100M
#43 Standard Colors	DMI2L1290(color code)100
#43 Popular Colors	DMI2L1290V(color code)100

The color chart to the right is representative of our standard color offerings. Colors may vary from actual product due to color variations in the catalog printing process. Actual colored product samples are available on request.



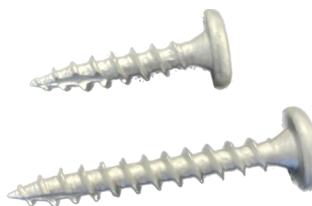
New colors coming soon:
Teal 432, Teal Green 052, &
Buckskin 1280

PANCLIP - for applications that require a low profile head with large flat under head load bearing surface. The Panclip head combines a larger clamping surface than a PFH fastener and a lower profile than a HWH or hex head fastener. Designed primarily for the installation of standing seam metal roofing panel clips. The Panclip has many other applications such as window, door, fixture, liner panel, cladding and siding panel installations. Panclip fasteners are now available for wood (MTW), steel (MTM) or wood to metal (WTM) applications.

#10 PANCLIP MTW - 1000 HR COATED DADE

DMI's "standard" fastener for low profile fastening applications to wood substrates. This engineered multi-purpose fastener is a carbon steel fastener with E zinc galvanizing and DMG85 corrosion resistant coating. This fastener meets exceeds the ASTM G85 Miami-Dade corrosion resistance requirement and the Silver parts have a Miami-Dade fastener listing L 21-0630.02. This fastener also meets the Florida Building Code, 2017 FBC R904.5.2, 2014 1505.5 1000 hr ASTM B-1117 requirements. The #10-9 thread pattern performs well in plywood and OSB substrates

All Panclip MTW screws feature #2 square drive and a TP-17 point and are packaged 250 pcs per bag.



Substrate	#10-9 Pull out
1" x 4" Pine	665 lbs
1/2" Plywood	503 lbs ult
7/16 (1/2") OSB	192 lbs

Available Sizes	Qty/Box	Part# 1000hr
#10 x 1" TP17	5,000	DMIPD10100T
#10 x 1-1/2" TP17	2,500	DMIPD10150T
#10 x 2" TP17	2,000	DMIPD10200T
#10 x 2-1/2" TP17	2,000	DMIPD10250T

MIAMI-DADE COUNTY LISTED

L 21-0630.02

WHITE/BRIGHT WHITE COATED

Available Sizes	Qty/Box	Part# 1000hr
#10 x 2" TP17	2,000	DMIPD10200WT
#10 x 2-1/2" TP17	2,000	DMIPD10250WT
#10 x 3" TP17	1,500	DMIPD10300WT

PANCLIP SP MTW - 1000 HR COATED

Panclip fastener designed for clip installation into dimensional lumber wood substrates. Full Silver DMG85 coating and sharp point. Meets FBC 1506.6 and Miami Dade requirements. Available in older 11 TPI and 13 TPI design thread patterns specified in some approved systems more specifically suitable for dimensional lumber substrates. Packaged 250 pcs / bag



Substrate	#12-11 Pull out
1/2" Plywood	420 lbs ult

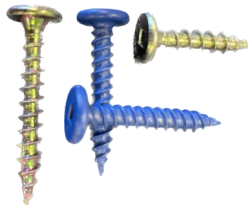
Available Sizes	Qty/Box	Part#
#10-13 x 1-1/4" R2	3,500	DMIPDX10114BA
#12-11x 3/4" S2	5,000	DMIPD123411T
#12-11x 1" P2/S2	5,000	DMIPD121011T
#12-11x 2" S2	2,000	DMIPD122011T

MIAMI-DADE COUNTY LISTED

#10 L 21-0630.01
#12 L 21-0630.05

PANCLIP ECONO - MTW

The Panclip Econo fastener is available to customers who like the tight driver fit and ease of installation that the standard Panclip MTW fastener offers without the extra anti corrosive coating or Miami-Dade Listing / compliance. The yellow zinc plated parts are not for use in Florida. Blue coated #10-13 parts are coated for use in the Florida market however are not rated for Miami-Dade regulated areas. Packaged 250 pcs / bag.



Substrate	#10-13 Pull out
1/2" Plywood	331 lbs ult

Available Sizes	Qty/Box	Part#
#10-9 x 1" TP-17	5,000	DMIEP1010ZTS
#10-9 x 1-1/2" TP-17	2,500	DMIEP1015ZTS

PANCLIP ECONO COATED BLUE SP SQ2

Available Sizes	Qty/Box	Part#
#10-13 x 1-1/4" R2	3,500	DMIPDX10114BA

PANCLIP-SD-L LONG LENGTH PANCAKE

#14-13 Panclip fastener designed for clip installation through insulation into wood, light gauge metal up to 16 ga. or masonry substrates (with 3/16" pre-drill). Also popular for insulation plate, nail board, or ISP installation. Carbon steel with corrosion resistant 1000 hr DMG85 black coating exceeds ASTM B117 and FBC 1506.6 standards. Now available in 100/box shelf friendly boxes or bulk packaged cartons.



Substrate	Pull out
1/2" Plywood	465 lbs avg
22 ga Steel (80ksi)	436 lbs ult
4000 PSI Concrete	675 lbs ult

PANCLIP SD-L COATED BLACK B=BULK

Available Sizes	Qty/Box	Part#
#14 x 1-1/2"	2,500	DMIPL1415D
#14 x 1-1/2"	100/2,400	DMIPL1415D100
#14 x 2"	100/2,400	DMIPL1420D100
#14 x 3"	1,000	DMIPL1430D
#14 x 3"	100/1,600	DMIPL1430D100
#14 x 4"	1,000 B	DMIPL1440D
#14 x 4"	100/1,600	DMIPL1440D100
#14 x 5"	1,000 B	DMIPL1450D
#14 x 5"	100/1,200	DMIPL1450D100
#14 x 6"	1,000 B	DMIPL1460D
#14 x 6"	100/1,200	DMIPL1460D100
#14 x 7"	1,000 B	DMIPL1470D
#14 x 8"	500 B	DMIPL1480D
#14 x 10"	100/300	DMIPL14100D100

MIAMI-DADE COUNTY LISTED

#14 x 1-1/2" , 2"
L 21-0630.03

#15-13 DEK*ZIP XHD FASTENER (PH3)

If you need a longer fastener for panel clip attachment than what the above Panclip SDL fasteners provide, consider our DEK*ZIP XHD Fastener. The #15-13 thread style is rated for installation into wood and light gauge metal decking. This fastener has a Phillips #3 pan head which fits most DMI panel clips and features a black epoxy coating that meets the FBC 1506.6 standard. The is 3-3/4" of thread on each fastener longer than 4"



Substrate	#15-13 Pull out
1/2" Plywood	554 lbs ult

Size	Qty/Box	Part #
#15 x 11"	500	DMICRS1151100
#15 x 12"	250	DMICRS1151200
#15 x 14"	250	DMICRS1151400
#15 x 16"	250	DMICRS1151600
#15 x 18"	250	DMICRS1151800
#15 x 20"	250	DMICRS1152000
#15 x 22"	250	DMICRS1152200
#15 x 24"	250	DMICRS1152400

PANCLIPSS MTW - 304 STAINLESS STEEL

#10-9 PanclipSS with low profile pancake head for installing standing seam panels, concealed panel clips, windows or fixtures into wood substrates. Ideal for coastal applications or when a high level of corrosion resistance is required. Corrosion resistance exceeds ASTM B117 and G85 standards. Miami-Dade Listing# L20-0309.02. The PanclipSS has a full DMG85 silver coating to help resist dissimilar metal reactions and has a low profile SQ2 drive head with TP-17 point. 250/bag.



MIAMI-DADE COUNTY
LISTED

304 SS, #2SQ, TP-17 Low Profile, 250/bag
Miami-Dade L20-0309.02

Available Sizes	Qty/Box	Part#
#10 x 1" TP17	5,000	DMIP31010D
#10 x 1-1/2" TP17	2,500	DMIP31015D
#10 x 2" TP17	2,000	DMIP31020D

304 SS Sharp Point, Not MDL, SQ2, 250/bag

Available Sizes	Qty/Box	Part#
#12-11 x 3/4" A	5,000	DMIP31234D
#14-14 x 3/4" AB	4,000	DMIP31434SDCAB
#14-14 x 1" AB	3,000	DMIP31410SDCAB

PANCLIPSS MTW - 316 STAINLESS STEEL

Similar to the 304 stainless PanclipSS fasteners above this fastener is made of 316 stainless steel. Ideal for coastal applications or when a high level of corrosion resistance is required or specified by an engineer. 316 Stainless is soft so please take care when driving, all 316 SS Panclips use a #2 square drive bit. 250/bag.



Available Sizes	Qty/Box	Part#
#10 x 1-1/2" TP17	2,500	DMIP3161015D
#12-11 x 1-1/2" SP	2,500	DMIP3161215D

PANCLIP-SD-SS-L STAINLESS STEEL

#14-13 Stainless Steel Panclip fastener designed for clip installation through insulation into wood or light gauge metal up to 18 ga. Also popular for insulated panel, bearing plate or nailboard attachment to metal deck. 410 Stainless steel base material with DMG85 Silver corrosion resistant coating exceeds ASTM B117 and FBC 1506.6 standards. SQ2 drive, bulk packaged.



PANCLIP SD-SS-L 410SS DMG85 SILVER

Available Sizes	Qty/Box	Part#
#14 x 1-1/2"	2,500	DMIP41415D
#14 x 3"	1,000	DMIP41430D
#14 x 5"	500	DMIP41450D
#14 x 7"	500	DMIP41470D
#14 x 10"	500	DMIP414100D

#14 SSCRS 316 STAINLESS STEEL BI-METAL Light gauge applications up to 18 ga

#14 Stainless Steel Bi-Metal Roofing Fastener made of 316 austenitic stainless steel alloy with a hardened carbon steel drill point. This is an all purpose roofing fastener engineered to secure insulation, panel clips and membrane to 18-24 ga steel deck or wood. Electro-zinc plated over 316 stainless construction. FM approved. PH3 Drive.



SILVER STAINLESS STEEL PARTS
316 Stainless Bi-Metal

Available Sizes	Qty/Box	Part#
#14 x 3"	1,000	HDB-3000-SS-DMI
#14 x 4"	1,000	HDB-4000-SS-DMI
#14 x 6"	1,000	HDB-6000-SS-DMI
#14 x 8"	500	HDB-8000-SS-DMI
#14 x 10"	250	HDB-10000-SS-DMI
#14 x 12"	250	HDB-12000-SS-DMI

PAN*CON SS - MASONRY OR WOOD

410 Stainless Steel Panclip fastener designed for installation into predrilled masonry/concrete or wood. DMG85 Silver corrosion resistant coating exceeds ASTM B117 and FBC 1506.6 standards. SQ2 drive. Packaged in 100 piece boxes with a drill bit included. Popular for termination bar, Duraclad and standing seam attachment to masonry.



Pan*Con 410 SS C Point SQ2 Drive

Available Sizes	Qty/Case	Part#
#14 x 1-1/2" SQ2	1,700	DMIPC41415T
#14 x 2-3/4" SQ2	1,600	DMIPC414275T
#14 x 4" SQ2	1,200	Discontinued
#14 x 6" SQ2	1,000	DMIPC414600T

MIAMI-DADE COUNTY
LISTED

L 19-0216.03

PANCLIP-SDSS 410 STAINLESS STEEL MTM Medium gauge applications .036"- .210"

Panclip low profile pancake head with full 410 stainless steel construction and the DMG85 silver coating for resistance to dissimilar metal reaction and corrosion. Designed for clips and fixtures attachment to medium gauge steel substrates. #2 Square Drive. Packaged 250 pcs / bag.



PANCLIP SD-SS 410SS CTD SQ2 250/BAG

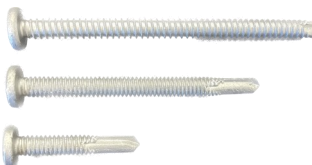
Available Sizes	Qty/Box	Part#
#10-16 x 3/4" SD3	5,000	DMIP41075DC
#10-16 x 1" SD3	5,000	DMIP41010DC
#12-14 x 2" SD3	2,000	DMIP41220DC

MIAMI-DADE COUNTY
LISTED

L 20-0309.01

#14 PANCLIP-SDSS HD 410 STAINLESS STEEL MTM Medium to heavy gauge applications

Panclip low profile pancake head with full 410 stainless steel construction and the DMG85 brown or silver coating for resistance to dissimilar metal reaction and corrosion. Designed for clips and fixtures attachment to medium to heavy gauge steel substrates with #14 diameter for added shear strength. SD3 for steel up to 0.210" and SD4 for steel 0.12 up to 0.25" thick. These parts will be available 4th quarter 2023.



PANCLIP SD-SS HD 410SS CTD SQ3 250/BAG

Available Sizes	Qty/Box	Part#
1/4-14 x 1" SD3	3,000	DMIP41410DC
1/4-14 x 2" SD3	2,000	DMIPD4314200C
1/4-14 x 4" SD3	1,000	DMIPD4314400C
1/4-14 x 6" SD3	1,000	DMIPD4314600C
1/4-14 x 8" SD3	500	DMIPD4314800C
1/4-14 x 10" SD3	250	DMIPD43141000C
1/4-20 x 3" SD4	1,500	DMIPD4514300TC
1/4-20 x 5" SD4	1,000	DMIPD4514500TC
1/4-20 x 7" SD4	500	DMIPD4514700TC

PANCLIP-SD for applications that require a low profile head with large flat under head load bearing surface. The Panclip head combines a larger clamping surface than a PFH fastener and a lower profile than a HWH or hex head fastener. Designed primarily for the installation of standing seam metal roofing panel clips and commercial roofing stress and seam plates. The Panclip also has many other applications such as window, door, fixture, liner panel, cladding and siding panel installations. Panclip SD-L fasteners are for wood, masonry or light gauge metal applications.

PANCLIP-SD-L SELF DRILLING MTM
Light gauge applications up to 16 ga

#14-13 Panclip fastener designed for panel clip, stress plate, nailbase and fixture attachment to metal decking from 22 ga to 16 ga in thickness.

The truss style thread is also suitable for installations into wood and also masonry and concrete with a 3/16" predrill. The Panclip SD-L features the DMG85 black coating that meets FBC and MDC corrosion resistance requirements. Panclip SD-L has a #2 square drive and precision drill point. Bulk packaged.



MIAMI-DADE COUNTY
LISTED

L 21-0630.03
(DMIPL1415D, DMIPL1420D100)

PANCLIP SD-L COATED BLACK B=BULK		
Available Sizes	Qty/Box	Part#
#14 x 1-1/2"	2,500	DMIPL1415D
#14 x 2"	100/2,400	DMIPL1420D100
#14 x 3"	1,000	DMIPL1430D
#14 x 4"	1,000 B	DMIPL1440D
#14 x 5"	1,000 B	DMIPL1450D
#14 x 6"	1,000 B	DMIPL1460D
#14 x 7"	1,000 B	DMIPL1470D
#14 x 8"	500 B	DMIPL1480D
#14 x 10"	100/300	DMIPL14100D100

Multi-Purpose for Metal Deck, Wood, or Masonry Concrete Substrates

PANCLIP-SD SELF DRILLING MTM
Medium gauge applications .036"-.210"

Panclip low profile pancake head mated to a self drilling drill point for drill and tap performance into metal and steel substrates. SD2 and SD3 point fasteners are designed to self drill and tap into metal substrates from 22ga up to 8 ga steel.

PANCLIP-SD features the 1000hr DMG85 silver coating to meet FBC1506.6 and other corrosion resistance requirements. Packaged in 250 count bags.



PANCLIP SD - DMI SILVER COATED P2/S2		
Available Sizes	Qty/Box	Part# 1000hr
#10-16 x 1"	SD2 5,000	DMIPD210100C
#10-16 x 1-1/2"	SD2 2,500	DMIPD210150C
#12-14 x 1"	SD3 5,000	DMIPD312100C
#12-14 x 2"	SD3 2,000	DMIPD312200C
1/4-14 x 1-1/4"	SD3 3,500	DMIPD314125C
1/4-14 x 2"	SD3 2,000	DMIPD314200C
1/4-14 x 4"	SD3 1,000	DMIPD314400C
1/4-14 x 6"	SD3 1,000	DMIPD314600C
1/4-14 x 8"	SD3 500	DMIPD314800C
1/4-14 x 10"	SD3 500	DMIPD3141000C

PANCLIP-SD HD #14 SELF DRILLING MTM
Heavy gauge/purlin applications .12"-.250"

Panclip low profile pancake head designed for installing panel clips, fixtures and stress plates into steel substrates. PANCLIP-SD HD features a SD4 heavy drill point and square drive #3 for driving stability. Fully coated with DMG85 FBC 1506.6/MDC Coating.



PANCLIP SD4 HD - DMI SILVER COATED SQ3		
Available Sizes	Qty/Box	Part# 1000hr
1/4-20 x 1-1/2"	2,500	DMIP514150TC
1/4-20 x 3"	1,500	DMIP514300TC
1/4-20 x 5"	1,000	DMIP514500TC
1/4-20 x 7"	500	DMIP514700TC

SD4 point fasteners are designed to self drill and tap into metal substrates from 12ga up to 1/4" thick steel beams.

PANCLIP-SD-SS-L STAINLESS STEEL MTM
Light gauge applications up to 18 ga

#14-13 Stainless Steel fastener designed for clip, stress plate, nailbase and fixture attachment to metal decking from 22ga to 18ga in thickness. The Silver DMG85 coating provides a high level of corrosion & dissimilar metal reaction resistance. Panclip SD-SS-L comes bulk packaged and has a #2 square drive. DMG85 coated 410 Stainless exceeds 1506.6 & MDC standards.



PANCLIP SD-SS-L 410SS CTD BULK		
Available Sizes	Qty/Box	Part#
#14 x 1-1/2"	2,500	DMIP41415D
#14 x 3"	1,000	DMIP41430D
#14 x 5"	500	DMIP41450D
#14 x 7"	500	DMIP41470D
#14 x 10"	500	DMIP414100D

Multi-Purpose for Metal Deck, Wood, or Masonry Concrete Substrates

PANCLIP-SDSS 410 STAINLESS STEEL MTM
SD3 Medium gauge applications .036"-.210"
SD4 Medium gauge applications .120"-1/4"

Panclip low profile pancake head with full 410 stainless steel construction and the DMG85 silver coating for resistance to dissimilar metal reaction and corrosion. Designed for clips and fixtures attachment to medium gauge steel substrates. #10 x 3/4" and 1" lengths carry a Miami-Dade Listing # to certify corrosion resistance.



MIAMI-DADE COUNTY
LISTED

L 20-0309.01

PANCLIP SD-SS 410SS CTD SQ2 250/BAG		
MDC Listed Sizes	Qty/Box	Part#
#10-16 x 3/4" SD3	5,000	DMIP41075DC
#10-16 x 1" SD3	5,000	DMIP41010DC

Additional Sizes	Qty/Box	Part#
#12-14 x 2"	SD3 2,000	DMIP41220DC
1/4-14 x 1"	SD3 3,000	DMIP41410DC
1/4-14 x 2"	SD3 2,000	DMIPD4314200C
1/4-14 x 4"	SD3 1,000	DMIPD4314400C
1/4-14 x 6"	SD3 1,000	DMIPD4314600C
1/4-14 x 8"	SD3 500	DMIPD4314800C
1/4-14 x 10"	SD3 250	DMIPD43141000C
1/4-20 x 3"	SD4 1,500	DMIPD4514300TC
1/4-20 x 5"	SD4 1,000	DMIPD4514500TC
1/4-20 x 7"	SD4 500	DMIPD4514700TC

Coming in the 4th quarter of 2023 DMI will be launching 1/4" (#14) HD parts in lengths up to 10". Ideal for panel clip and nailboard/insulated panel attachment in high corrosive areas. All parts are square drive.

DMI SNAPLOCK PANEL CLIPS

Designed for secure fastening of snap lock style standing seam/concealed fastener metal roofing systems. All DMI panel clips are designed to meet FBC 1506.7 corrosion resistance requirement. Panel clips can be manufactured to fit panels from most brands and styles of roll forming machines. Please specify make and model of machine when ordering. Most styles are designed with built-in fastener relief to help eliminate panel dimpling.



675

1-3/4" Snaplock Ultra Length HD
For 1-3/4" Snaplock Panels multiple versions to fit Quadro, RF, Newtech 675, D175S Knudson & ES2000, US 175
18 ga steel or SS, 2 hole, 3-1/2" width.

Gauge	Qty/Box	Part#	Height
18G Galv	250	CSN134312G18V-3	1.88"
18G Galv	250	CSN134312G18	1.875"
18G SS	250	CSN134312S18V-3	1.88"
18G SS	250	CSN134312S18	1.875"



1-1/2" Snaplock Ultra Length QSL HD
Fits 1-1/2" Snaplock Panels
fits Quadro, D450SL & E 1500
18 ga steel or SS, 2 hole, 3-1/2" width

Gauge	Qty/Box	Part#
18G Galv	125	CSN112312G18QV
18G Galv	125	CSN112312G18Q
18G Galv	125	CSN112312G18QV-MOD
18G SS	125	CSN112312S18QV
18G SS	250	CSN112312S18Q



675

1-3/4" Snaplock Econo LD
Fits 1-3/4" Snaplock Panels (1-7/8")
fits Quadro, Rollformer, Newtech 675, Knudson, E US 175
18 ga steel or SS, 3 hole, 2-1/4" width

Gauge	Qty/Box	Part#
18G Galv	400	CSN134214G18V
18G Galv	400	CSN134214G18
18G SS	400	CSN134214S18V
18G SS	400	CSN134214S18



1-1/2" Snaplock Econo QSL LD
Fits Quadro 1-1/2" Snaplock Panels
E 1500, D450SL
20 ga steel or SS, 3 hole, 2-1/4" width

Gauge	Qty/Box	Part#
20G Galv	500	CSN112214G20QV
20G Galv	500	CSN112214G20Q
20G SS	500	CSN112214S20Q



550

1-1/2" Snaplock NT550 HD
Fits Newtech 550, D550S
20 ga steel or SS, 2 hole, 3-1/2" width

Gauge	Qty/Box	Part#
20G Galv	250	CSN112916G20NHD
20G Galv	250	CSN112916G20NHDV
20G SS	250	CSN112916S20NHD
20G Galv	250	CSN112916S20NHDV



1-1/4" Snaplock Econo QSL LD
Fits Utility Panels, fits Quadro
24 ga steel 2" width

Gauge	Qty/Box	Part#
24G Galv	600	CSN11420G24QSL
24G Galv	600	CSN11420G24QSLV



450

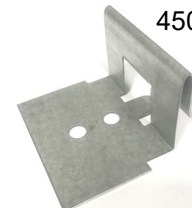
1-1/2"/1-1/4" Snaplock Newtech 450HD
no fastener relief dimples and flat tongue.
Fits 450, EA1000, Plusmax, D450, SOP15
24 ga steel or SS, 3 hole, 3" width

Gauge	Qty/Box	Part#
24G Galv	500	CSN11430G24V
24G SS	500	CSN11430S24V



1" Snaplock QSL HD
Fits Quadro 1" Snaplock Panel
18 ga steel 3.5" width

Gauge	Qty/Box	Part#
18G Galv	200	CSN100350G18QSL



450

1-1/2"/1-1/4" Snaplock Newtech 450 LD
Fits Modified 450 panel and other utility panels. Fits Newtech 450 and EA1000, D450.
24 ga steel or SS, 2 hole, 2" width
(a) 3/4" DL, with dimples and raised tongue
(b) 3/4" DL, no dimples and flat tongue
(c) 7/8" DL, with dimples and raised tongue

Gauge	Qty/Box	Part#
24G Galv	600 (a)	CSN11420G24U
24G SS	600 (a)	CSN11420S24U
24G Galv	600 (b)	CSN11420G24UNDFT
24G SS	600 (b)	CSN11420S24UNDFT
24G Galv	600 (c)	CSN11420G24U78
24G SS	600 (c)	CSN11420S24U78



1" Snaplock Econo QSL LD
Fits Quadro 1" Snaplock Panel
24 ga steel, 2" width

Gauge	Qty/Box	Part#
24G Galv	1,000	CSN10020G24QSL
24G Galv	1,000	CSN10020G24QSLV
24G SS	1,000	CSN10020S24QSL



450SL

1-1/4"/1-1/2" Snaplock 450SL HD
Fits Newtech 450SL, DMC 450SL
24 ga steel or SS, 2 hole, 3" width

Gauge	Qty/Box	Part#
24G Galv	600	CSN11430G24U
24G SS	600	CSN11430S24U



1-3/4" Zimmerman SL HD
For 1-3/4" Snaplock Panels multiple versions to fit Zimmerman Z175 Panels
18 ga steel or SS, 2 hole, 3-1/2" width

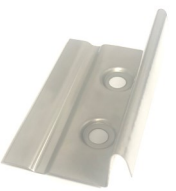
Gauge	Qty/Box	Part#	Height
18G Galv	250	CSN134312G18V	1.83"
18G SS	250	CSN134312S18V	1.83"



450SL

1-1/4"/1-1/2" Snaplock 450SL LD
Fits Snaplock Econo Panels
Fits Newtech 450SL, DMC 450SL
24 ga steel or SS, 2 hole, 2" width

Gauge	Qty/Box	Part#
24G Galv	600	CSN11420G24U
24G SS	600	CSN11420S24U



1" or 1-1/2" Zimmerman
Fits 1", 1-1/2" Zim Snaplock Panels
24 ga steel or 304SS, 2 hole, 3" width

Gauge	Qty/Box	Part#
24G Galv	500	CSN112916G24Z
24G SS	500	CSN112916S24Z

SNAP LOCK STANDING SEAM METAL PANEL CLIPS Continued...



1-1/4" Snaplock Utility Panel Clip
Fits 1-1/4", 1-1/2" Snaplock Panels
Actual clip size 1-3/8" x 2", w/dog ears
24 ga steel, 2 hole, 2" width
Gauge Qty/Box Part#
24G Galv 600 DMIUPCGV

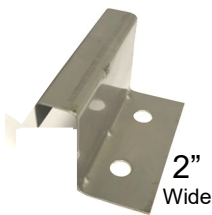


1" Snaplock Rollformer Corp Clip
Fits 1" Snaplock Panels (1-1/8")
Fits Rollformer
22 ga steel or 304SS, 2 hole, 2" width
Gauge Qty/Box Part#
22G Galv 1,000 CSN118200G22RFV
22G SS 1,000 CSN118200S22RFV

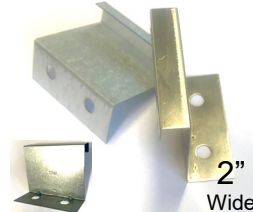
MECHANICAL LOCK STANDING SEAM FIXED METAL PANEL CLIPS

DMI MECHANICAL LOCK FIXED PANEL CLIPS

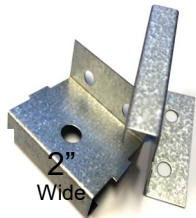
Designed for secure fastening of mechanical lock style standing seam / concealed fastener metal roofing systems. All DMI panel clips are designed to meet FBC 1506.7 corrosion resistance requirement. Panel clips can be manufactured to fit panels from most brands and styles of roll forming machines. Please specify make and model of machine when ordering. Most styles are engineered to give fastener relief, and heights of clips are listed in panel height. 1" tall panel would use 1-1/8" tall clip, 1-1/2" panel would use 1-5/8" clip, etc.



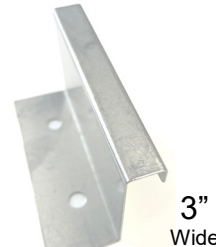
1" Mechanical Lock (1-1/8")
7/16" Top fits RF, NT, KN, D100SS,
EA1301, Galv or SS, 2 hole, 2" width
Gauge Qty/Box Part#
26G Galv 1,000 CMF1002716G26V
26G Galv 1,000 CMF1002716G26
24G Galv 1,000 CMF1002716G24
24G Galv 1,000 CMF1002716G24V
24G SS 1,000 CMF1002716S24
26G SS 1,000 CMF1002716S26



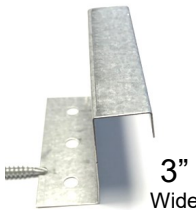
1-1/2" Mechanical Lock (1-5/8")
7/16" Top fits RF, NT, KN, EA1300, D150SS
Galv or Stainless, 2 hole, 2" width
Gauge Qty/Box Part#
24G Galv 1,000 CMF1502716G24V
24G Galv 1,000 CMF1502716G24
24G SS 1,000 CMF1502716S24
26G Galv 1,000 CMF1502716G26V
26G Galv 1,000 CMF1502716G26
26G SS 1,000 CMF1502716S26V
26G SS 1,000 CMF1502716S26



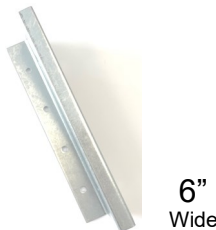
1-1/2" Mechanical Lock NFR (1-1/2")
7/16" Top fits Z1500, KR12, EA1300
US 1505, D150SS 2 hole, 2" width
NFR= No built in fastener relief this
1-1/2" panel clip is 1-1/2" in height.
Gauge Qty/Box Part#
26G Galv 1,000 CMF1372716G26
24G SS 1,000 CMF1502716S24NFR
26G SS 350 CMF1502716S26NFR



1-1/2" Mechanical Lock HD (1-5/8")
7/16" Top fits Z1500, EA1300, KR24, RF,
US 1505 D150SS, 2 or 3 hole, 3" width
Gauge Qty/Box Part#
24G Galv 500 CMF1503716G24V
24G SS 500 CMF1503716S24V
24G SS 500 CMF1503716S24



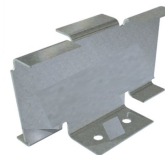
2" (2-1/8") Newtech Mechanical Lock
3/4" Top fits RF, NT Ultraseam,
Knudson, E, 3 hole, 3" width.
Gauge Qty/Box Part#
24G Galv 600 CMF218334G24
24G SS 300 CMF218334S24
22G Galv 600 CMF218334G22



1-1/2" Mechanical Lock XHD (1-5/8")
7/16" Top fits Z1500, EA1300, KR24, RF,
US 1505 D150SS, 4 hole, 6" width
Gauge Qty/Box Part#
22G Galv 250 CMF1506716G22
22G Galv 250 CMF1506716G22V
24G SS 250 CMF1506716S24
24G SS 250 CMF1506716S24V

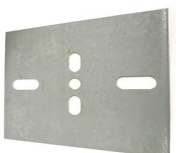


2" Quadro Mechanical Lock
5/8" Top fits Quadro
3 hole, 3" width.
Gauge Qty/Box Part#
24G Galv 600 CMF218358G24
24G SS 300 CMF218358S24



3" T-Panel Clip
3 hole, 16 ga G90 Galv or 409 Stainless
4.26" wide top, 2.0" wide base.
Qty/Box Part# Material
100 CME300TG16 GALV
100 CME300TG16V GALV
100 CME300TS16 STAINLESS
100 CME300TS16V STAINLESS

DMI UNIVERSAL BEARING PLATES - Create a load bearing surface for panel clips or fasteners overtop of insulation boards.



Universal 4" x 5" slotted for Panel Clips
Size Gauge Qty/Box Part#
4" x 5" 20ga G90 250 UBP4620GV
4" x 5" 20ga G90 250 UBP4620G
4" x 5" 24ga G90 250 UBP4624GV
4" x 5" 20ga 304SS 250 UBP4520S

ADDITIONAL METAL STAMPINGS



Commercial Box Gutter HD Hangers
18 ga G-90 Galvanized or 0.063" Aluminum,
200 pieces per box
5", 6", 7" and 8" available

EXPANSION CLIPS FOR MECHANICAL LOCK PANEL CLIPS

Designed to allow for thermal expansion while providing secure fastening of mechanical lock style standing seam / concealed fastener metal roofing systems. The expansion style clips are available in 3 different styles; one piece pre-assembled style, a two piece job site assembled and a butterfly style two piece job site assembled. All DMI panel clips are designed to meet FBC 1506.7 corrosion resistance requirements.



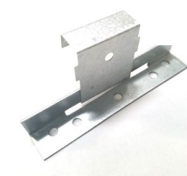
2" Newtech 1 PC Single L Expansion
3/4" Top fits Newtech Machines, SSQ200, NT SS200, NT SS210, ZIM SS2000
2 hole, 4-3/8" width, 1/2" standoff.
Galvanized G90 Top 22ga, Base 16G.
Stainless 304S Top 24ga, Galv Base 16G

Type	Qty/Box	Part#
Galvanized 100		CMEMLG200NT
Galvanized 100		CMEMLG200NTV
Galvanized 80		1020252
Stainless 100		CMEMLS200NT
Stainless 100		CMEMLS200NTV



2" Newtech 1PC Double L Expansion
3/4" Top fits Newtech SS200, SS210, RF23C, ZIM SS2000, US-200, US-200C
2 hole, 4-3/8" width, Galvanized G90 Top 22ga, Base 16G.

Type	Qty/Box	Part#
Galvanized 80		753279 < with hot melt
Galvanized 100		CMEMLG200NTDLLV
Stainless 100		CMEMLS200NTDLLV



2" Newtech 2PC Expansion
3/4" Top fits Newtech Machines, SSQ200
5 hole, 5 base width. Field assembly required
Ideal for wood substrates.

Desc	Qty/Box	Part#	Material
Top 24G 1,000		CMT2003416G24	GALV
Top 24S 1,000		CMT2003416S24	304 SS
Top 26S 1,000		CMT2003416S26	304 SS
Base 18G 500		CMB500G18	GALV



2" Newtech Butterfly Style Expansion
3/4" Top fits Newtech Machines, SSQ200, NTSS200, NTSS210, RF23c, US200, ZIMSS2000
2 hole 4-3/8" base, ribbon top. Ideal for wood substrates. Field assembly required.

Desc	Qty/Box	Part#	Material
Top 22G 150		1216534	GALV
Top 22S 150		1342536	304 SS
Base 22G 150		1126600	GALV



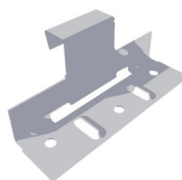
2" Quadro 1PCS Expansion
5/8" Top fits Quadro Machines
2 hole, 4-3/8" width, 1/2" standoff.
Galvanized G90 Top 22ga, Base 16G.
Stainless 304S Top 24ga, Galv Base 16G

Gauge	Qty/Box	Part#
Galvanized 100		CMEMLG200QP
Galvanized 100		CMEMLG200QPV
Galvanized 100		1069206
Stainless 100		CMEMLS200QP



2" Knudson KR24 1PCS Expansion
0.660 Top fits Knudson KR24 Profile
2 hole, 4.3" width, 0.40" standoff.
Galvanized G90 Top 22ga, Base 16G.
Stainless 304S Top 24ga, Galv Base 16G

Gauge	Qty/Box	Part#
Galvanized 80		728907
Galvanized 100		CMEMLS200KR24DLPV
Stainless 80		747235



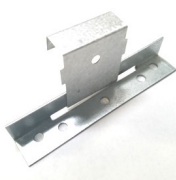
1" Knudson Two Piece Expansion Asm
7/16" Top, 7/32 DL fits Knudson ML,
3 hole base. This 2 piece clip comes assembled.
Ideal for wood substrate

Gauge	Qty/Box	Part#
26G/26G	500	CMT1002716G2626GK
24G/24G	500	CMT1002716G2424GK
24S/26S	500	CMT1002716S2426GK



1-1/2" One Piece Expansion
fits Quadro, Newtech SS150, RF VS150
2 hole, 4-3/8" width, 1/2" standoff.
Galvanized G90 Top 22ga, Base 16G.
Stainless 304S Top 24ga, Galv Base 16G
Stainless 304S Top 26ga, Galv Base 16G

Gauge	Qty/Box	Part#	Top/Base
Galvanized 100		CMEMLG150	22/16
Stainless 100		CMEMLS150	24/16
Stainless 100		CMEMLS150LD	26/16



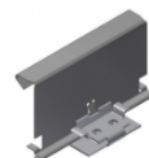
1-1/2" Two Piece Expansion
7/16" Top fits Newtech and Quadro, SS150
5 hole, 5 base width. This 2 piece clip requires field assembly. Each piece top and bottom sold separately. (Ideal for wood substrates)

Gauge	Qty/Box	Part#	Material
Top 24G 1,000		CMT1502716G24	GALV
Top 26G 1,000		CMT1502716S26	SS
Base 18G 500		CMB500G18	GALV



1-1/2" Butterfly Style Expansion Clip
2 hole 4-3/8" base, ribbon top. SS150
Field assembly required as this clip is sold in two different parts.

Part	Gauge	Qty/Box	Part#
Top 24 Galv	200		1238708 S.O.
Top SS 24 304SS	200		1238709 S.O.
Top SS 26 304SS	200		1236937 S.O.
Base 22 Galv	200		1126602 S.O.



TRQ-250 Newtech Trapezoid Panel Expansion Clip fits TRQ250
2 hole, 22 ga top, 16 ga base, G90 Galv.

Qty/Box	Part#
100	B110230 S.O.



3" T-Panel Clip
3 hole, 16 ga G90 Galv or 409 Stainless
4.26" wide top, 2.0" wide base.

Qty/Box	Part#	Material
100	CME300TG16	GALV
100	CME300TG16V	GALV
100	CME300TS16	STAINLESS
100	CME300TS16V	STAINLESS

WOODZIP S.C.A.M.P METAL TO WOOD STAINLESS STEEL CAP HEAD FASTENERS



#12 WOODZIP S.C.A.M.P. 304 STAINLESS STEEL 5/16" CAP HEAD

Is a premium fastener with more bite. Perfect for harsh climates and panel systems designed for coastal or high pressure wind zones. The #12 WoodZIP SCAMP incorporates the best features of many of our other fasteners. The #12 S.C.A.M.P. is designed with a 5/16" drive 304 stainless steel cap head with a larger bearing surface to clamp a larger surface of the panel. A larger diameter shank with a HI-LO thread for higher withdrawal resistance than standard #10 fasteners. The pig-tail reducing TP-17 cut-point allows for speedy installation and reduces splitting of wood substrates. The SCAMP has been tested for installation into plywood, OSB, and dimensional pine lumber as well as standard concrete and CMU block substrates. This 304 stainless steel capped head fastener features an EPDM/304 Stainless steel washer designed to tuck under the cap head and free spin on installation eliminating washer spit out.

#L19-0219.02



MIAMI-DADE COUNTY
LISTED

Mill Finish Sizes	Qty/Box	Part#
#12 x 3/4"	2,500	DMI4SSC12034M
#12 x 1"	2,500	DMI4SSC12100M
#12 x 1-1/2"	2,000	DMI4SSC12150M
#12 x 2"	1,500	DMI4SSC12200M
#12 x 2-1/2"	1,000	DMI4SSC12250M
#12 x 4"	1,000	DMI4SSC12400M

#12 Pull out Substrate	#12 Pull out Ultimate Value
2"x4" SYP(1")	710 lbs
7/16" OSB	300 lbs
15/32" Plywood	451 lbs
CME Block	841 lbs



STEELZIP S.C.A.M.P. 304 STAINLESS STEEL CAPPED HEAD MTM

This little devil of a fastener was designed for original panel installation of metal roofing and wall panels to steel substrates. The SteelZip SCAMP is a self drilling and tapping fastener with a protective 304 series stainless steel cap head shaped to hold and protect the EPDM long life rubber washer underneath for a positive seal to the metal panel. The corrosion protection does not end with the exposed cap and is backed up with the DMG85 long life barrier coating on the strong carbon steel shank. These features combine to meet our goal of providing a long life performance fastener without the cost and installation issues common to full stainless steel fasteners. The SteelZIP SCAMP is now Miami-Dade Product Listed.



MIAMI-DADE COUNTY
LISTED

#12 Product Listing # L 20-1105.02
#14 Product Listing # L 20-1105.01

Panel to Purlin Fasteners

Drill up to 8ga	Qty/Box	Part#
#12 x 1" SD3	2,500	DMI4SSCSD3100M
#12 x 1-1/4" SD3	2,500	DMI4SSCSD3125M
#12 x 1-1/2" SD3	2,000	DMI4SSCSD3150M
#12 x 2" SD3	1,500	DMI4SSCSD3200M

Panel to Purlin Replacement Fasteners

Drill up to 8ga	Qty/Box	Part#
#14 x 1-1/4" SD3	1,500	DMI4SSCSD314125M
5/16x 1-1/4" SD3	1,000	DMI4SSCSD3516125M

Panel to Panel Stitch drill up to 18 ga.

Available Sizes	Qty/Box	Part#
#14 x 7/8" SD1	2,500	DMI4SSCSD114078M

Heavy Steel drill up to 1/2" thick.

Available Sizes	Qty/Box	Part#
1/4-20 x 1-3/4"	1,000	DMI4SSCSD514134M
1/4-20 x 1-3/4"	1,000	DMI4SSCSD514134001 White



3/8" S.C.A.M.P. TAPPER 304 STAINLESS STEEL CAPPED

The 3/8" SCAMP Tapper is the largest diameter fastener DMI offers in the SCAMP stainless steel cap family of fasteners. The 3/8" diameter fastener is 0.375" nom and is large enough to directly replace other large diameter fasteners such as screwbolts, #17, .343" and .351" diameter fasteners. These are a type A thread that will "self tap in" to predrilled holes in steel purlins and sheet metal to sheet metal stitch applications. This fastener has a 3/8" drive stainless steel capped head, a stainless steel / EPDM bonded washer and the DMG85 Silver shank coating for corrosion resistance.

Selection	Qty/Box	Part#
3/8" x 1" TPA	1,000	DMI4SSC380100M



STEELZIP HWH ECONO SELF DRILLING FASTENERS ZINC PLATED

Self drill fasteners for metal to metal applications such as ductwork assembly, metal framing, gusset plate and steel tube fastening. The SteelZIP Econo line of self drilling fasteners are imported from Taiwan and have a zinc plating. Available in mill finish only. Available for order in full box quantities only.

Hex Head (HWH) Light to Medium Gauge			Heavy Ga Applications up to 1/2" thick steel		
Size	Point Qty/Box	Part#	Size	Point Qty/Box	Part#
#8 x 1/2"	SD2 10,000	DMI4HWKZ08012	#12 x 1-1/4"	SD5 2,000	DMI4HWKZ121145
#8 x 3/4"	SD2 10,000	DMI4HWKZ08034	#12 x 1-1/2"	SD5 2,000	DMI4HWKZ121125
#10 x 3/4"	SD3 6,000	DMISDNH10034	#12 x 2"	SD5 2,000	DMI4HWKZ122005
#10 x 1"	SD3 5,000	DMI4HWKZ10100			
#10 x 2"	SD3 2,000	DMI4HWKZ10200			
#12 x 3/4"	SD3 5,000	DMI4HWKZ12034			
#12 x 1"	SD3 3,000	DMI4HWKZ12100			
#12 x 1-1/2"	SD3 3,000	DMI4HWKZ12112			
#14 x 1"	SD3 3,000	DMI4HWKZ14100			
#14 x 1-1/2"	SD3 2,000	DMI4HWKZ14112			
#14 x 2"	SD3 1,000	DMI4HWKZ14200			

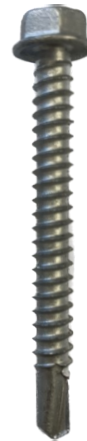
Fastener	Pull out Ultimate 16ga
#8	705
#10	786
#12	842
#14	910



STEELZIP CTD & IMPAX SD COATED HWH SELF DRILLING SCREWS

Used for attachment of metal to metal applications such as steel framing and hat channel and metal deck attachment. Similar to the SteelZIP Econo self drill fasteners with the added corrosion protection of thicker galvanizing and VistaCoat or DMG85 corrosion resistant coatings. Most sizes of coated fasteners also come bagged in 250 count bags for easy distribution. B=Bulk

Hex Head (HWH) Light to Medium Gauge			Hex Head (HWH) Heavy Gauge up to .500"		
Size	Point Qty/Box	Part#	Size	Point Qty/Box	Part#
#8-16 x 3/4"	SD2 10,000 B	DMISDNHC834	#12-24 x 1-1/4"	SD5 2,500	DMI2795839
#10-16 x 3/4"	SD3 5,000	DMI2793362	#12-24 x 1-1/2"	SD5 2,500	DMI2796618
#12-14 x 1"	SD3 2,500	DMI2794234	#12-24 x 2"	SD5 2,000	DMI2783126
#12-14 x 1-1/4"	SD3 2,500	DMI2795053	1/4-20 x 3"	SD5 1,000B	DMI21356393
#12-14 x 1-1/2"	SD3 2,500	DMI2796234	1/4-20 x 4"	SD5 1,000B	DMI21356395
#12-14 x 2"	SD3 2,000	DMI2796909	1/4-20 x 5"	SD5 600 B	DMI21356396
1/4-14 x 7/8"	SD1 2,500	DMI2797805 Stitch	1/4-20 x 6"	SD5 500 B	DMI21356398
1/4-14 x 1"	SD3 2,500	DMI2798553	1/4-20 x 7"	SD5 500 B	DMI21356399
1/4-14 x 1-1/4"	SD3 2,000	DMI2798810	1/4-20 x 8"	SD5 500 B	DMI21356400
1/4-14 x 1-1/2"	SD3 2,000	DMI2798973			



STEELZIP RETRO-DRILLER Used for attachment of metal to metal applications such as steel framing and hat channel and metal deck attachment when a longer than typical fastener is needed. There is a 1/2" un-threaded section beneath the HWH head of this fastener. This smooth shank section is designed to combat panel jacking/ thread riding in hat channel applications. The complete fastener is electro zinc plated and then coated with our DMG85 Silver 1,000 hr protective barrier coating. #3 drill point will self drill and tap steel thicknesses up to 0.210".

Size	Qty/Box	Part#
1/4-14 x 3"	1,000	DMI4SDNHC14300R
1/4-14 x 4"	750	DMI4SDNHC14400R



304 STAINLESS STEEL BI-METAL SD

The fused Bi-Metal self drilling point allows you to achieve the corrosion resistance of austenitic 304 stainless steel without having to pre-drill your fastener. The head and shank of the screw is 304 series stainless steel. A 25 year warranty against red rust on head and body of screw is available. The #12 fasteners have a 5/16 HWH drive, #14 have a 3/8" HWH drive. LSC spring clip drivers are suggested. Made in Czech Rep or Poland. Available to be painted.

100 Pieces per box	Drill Point	Part#	HWH No Washer	Drill Point	Part#
#10 x 7/8"	SD1	DMISDNHSSD110078	1/4-14 x 1"	SD3	DMI21558126
#10 x 1-3/8"	SD1	DMISDNHSSD10435	1/4-14 x 1-1/2"	SD3	DMI21558128
#10 x 2-3/8"	SD1	DMISDNHSSD10438	1/4-14 x 2"	SD3	DMI21558129
#10 x 3-1/16"	SD1	DMISDNHSSD18235	1/4-20 x 1-1/8"	SD4	DMI21558132
#12 x 7/8"	SD1	DMISDNHSSD10451	1/4-20 x 1-1/2"	SD4	DMI21558133
#10 x 3/4"	SD2	DMISDNHSSD12662	1/4-20 x 2"	SD4	DMI21558134
#12 x 1"	SD2+	DMISDNHSSD10452	1/4-20 x 2"	SD5	DMI21558130
#12 x 1-1/2"	SD2+	DMISDNHSSD15698	1/4-20 x 4"	SD5	DMI21558131
#12 x 1-5/8"	SD2+	DMISDNHSSD10455			
#12 x 2-1/4"	SD2+	DMISDNHSSD10457			
#12 x 2-3/8"	SD2+	DMISDNHSSD16524			
#12 x 1-5/8"	SD5	DMISDNHSSD512158			
#12 x 2-3/8"	SD5	DMISDNHSSD16342			



Pull out (#12 SD2+)
12ga: 1282
14ga: 908
16ga: 703

WOODZIP NO WASHER HWH FOR STONECOAT

Commonly specified for the installation of stone coated metal roofing panels to wood substrates. Think of this fastener as a WoodZIP/WoodGrip/TruGrip without the bonded sealing washer. Extra sharp piece point with 1/4" HWH drive packaged 250/bag Colors available to complement stone coated metal roofing panels. Colors are painted to order (min order may apply and 4 week lead).



WoodZIP NW DMG85 Silver Sharp Point 1/4"H			WoodGrip NW Colors Sharp Point 1/4" HWH		
Available Sizes	Qty/Box	Part#	Available Sizes	Qty/Box	Part#
#9 x 1-1/2"	4,000	DMI49150HZSIL	#9 x 1-1/2"	2,500	DMI2VO261001F
#9 x 2"	3,000	DMI49200HZSIL	#9 x 2"	2,000	DMI2CO381001F
#9 x 2-1/2"	2,000	DMI49250HZSIL	#9 x 3"	1,000	DMI2CO381001F
#12 x 1-1/2"	2,000	DMI21294652	#12 x 1-1/2"	2,000	DMI21294652(XXX)

STAINLESS STEEL WOODZIP NO WASHER HWH FOR STONECOAT

#10 x 2-1/2" WoodZIP no washer but in 410 stainless steel. TP-17 cutpoint with 1/4" low HWH drive packaged 1500 pcs/box, 250/bag. Terracotta/Red DMI4H4N10250928, Bronze DMI4H4N10250042



ZIP SCREW / GUTTER SCREW / SIDEWALL SCREW

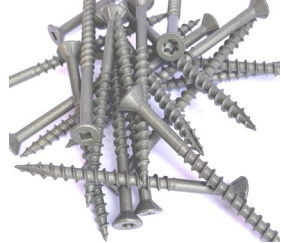
Commonly used in sidewall paneling to wood or stitch applications.



#8 ZIP Screws Sharp Point 1/4" HWH			
Size	Color	Qty/Box	Part#
#8 x 1/2"	White	100/12500	DMI4812HZPW
#8 x 1/2"	Brown	100/12500	DMI4812HZBN
#8 x 3/4"	Silver	10,000	DMI4834HZSIL
#8 x 1-1/2"	Silver	5,000	DMI48150HZSIL
#10 x 3/4"	Silver	250/5000	DMI2A1041F
#10 x 3/4"	L.Stone	250/5000	DMI2A1041248F
#10 x 3/4"	Tan	250/5000	DMI2A1041020F
#10 x 3/4"	P.White	250/5000	DMI2A1041001F

PREMIUM DECKING FASTENERS (T-25BAGGED)

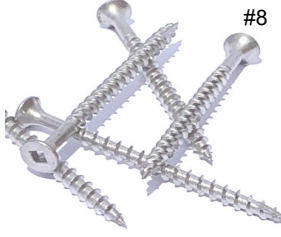
Decking screws are used in wood to wood applications such as 1" x 4" to plywood. Other popular uses include installation of tile and shake roofing, exterior fencing and exterior wood deck structures. Premium decking screws have a countersink style bugle head with a T-25 6 lobe drive packaged 250 pieces per bag or a #2 square drive, packaged in bulk carton. Green longlife coating for exterior performance.



Bulk Packaged Square Drive Parts				
Stock	Sizes	Drive	Qty/Box	Part#
#7 x 1-5/8"	SQ2	5,000	DMI4EGDS7158S2B	
#8 x 2"	SQ2	3,500	DMI4EGDS8200S2B	
#9 x 2-1/2"	SQ2	2,500	DMI4EGDS9250S2B	
#9 x 2-1/2"	T25	2,000	DMI4DA9250T25B	
#9 x 3"	SQ2	2,000	DMI4EGDS9300S2B	
#9 x 3"	T25	1,500	DMI4DA9300T25B	
#10 x 3-1/2"	SQ2	1,000	DMI4EGDS10312S2B	
#10 x 4"	SQ2	750	DMI4EGDS10400S2B	

305 STAINLESS STEEL TILE FASTENERS / 305 STAINLESS STEEL DECKING FASTENERS

When you need true corrosion resistance for applications such as clay or concrete tile installation into wood substrates, choose our full 305 stainless steel decking screws. Square flat head #2 Sq drive, #8 x 2" and 2-1/2" feature a TP-17 cutpoint. Available in full box quantities only.

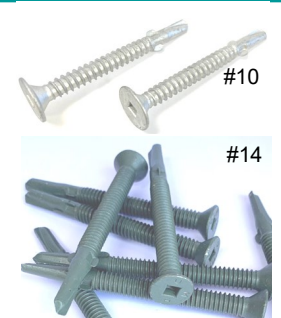


Stock	Sizes	Qty/Box	Part#
#8 x 2"		3,000	DMI1SS08200
#8 x 2-1/2"		2,500	DMI1SS08212
#10 x 2-1/2"		2,000	DMI1SS10212
#10 x 3"		1,500	DMI1SS10300

Special Order	Sizes	Qty/Box	Part#
#8 x 1-1/4"		5,000	DMI1SS08114
#8 x 1-5/8"		4,000	DMI1SS08158
#10 x 3-1/2"		1,000	DMI1SS10312

PREMIUM WOOD TO METAL FASTENERS

XLP WTM SD3 with extra low profile XLP wafer head for installing plywood, OSB, MDF and dimensional lumber to metal deck and steel up to 14 ga in thickness. Silver DMG85 w/wings, white DMG85 without wings.

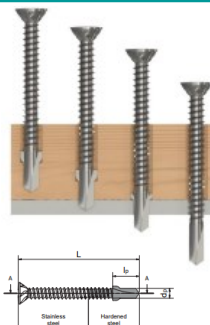


XLP WTM to metal up to 6 ga SQ2, SD3			
Sizes	Qty/Box	Part# (250/bag)	
#10-16 x 1-7/8"	2,000	DMIPXLP10178SD3SD	
#10-16 x 1-7/8"	2,000	DMIPXLP10178SD3WD	

WTM from 14 ga to 1/4" SQ3, SD4 Green			
Sizes	Qty/Box	Part# (250/bag)	
#14-20 x 2-3/4"	1,500	DMIPXLP14234SD4WWD	
#14-20 x 3-1/4"	1,000	DMIPXLP14314SD4WWD	

STAINLESS BI-METAL WTM WOOD TO METAL FASTENERS

Bi-metal screws consist of a stainless steel body and a hardened carbon steel point. This combines the excellent corrosion resistance from the stainless steel and the superior drilling and tapping capabilities of the carbon steel. The Bi-Metal WTM features reamer wings that aid in the head countersink that break off once they come in contact with the steel substrate.



Bi-Metal WTM to metal up to 6 ga T20, SD3			
Sizes	Qty/Box	Part#	
#10-16 x 2"	100	18263	

Bi-Metal WTM from 16 ga to 1/4" T20, SD3			
Sizes	Qty/Box	Part#	
#12 x 2-1/2"	100	18263	
#12 x 3-1/16"	100	18769	
#12 x 4"	100	18771	
#12 x 5"	100	18773	



GEOCEL™ 2300 CLEAR TRIPOLYMER SEALANT

A truly crystal clear sealant. 2300 construction Tripolymer Sealant is a single component, high performance elastomeric sealant for use in a wide variety of roofing, manufacturing, solar and general construction applications. For use on asphalt shingles, coated steel (Kynar 500™ based finishes), concrete, vinyl, steel and other common roofing substrates. The product offers exceptional elongation and flexibility, is UV resistant and is paintable. Not for use on Polycarbonate panels. Also available in select colors. Now available in cardboard or plastic tubes, 10 oz tubes 24/case.



Tube Style	Qty/Box	Part#
Carboard Clear	24	66100
Plastic Clear	24	66900
Copper Penny	24	66138
Metallic Silver	24	66139

GEOCEL™ 2320 GUTTER AND NARROW SEAM TRIPOLYMER SEALANT

2320® and 2321 Gutter and Narrow Seam Sealant is a single-component, elastomeric, semi-self-leveling, high performance tripolymer sealant designed to prevent the passage of air and moisture through small joints or seams. It is semi-self-leveling, paintable and offers a high level of UV resistance. For use on asphalt shingles, brick, masonry, concrete, glass, vinyl, wood, sheet metal and other common building substrates. Not for use on polycarbonate panels. Now available in cardboard 10 oz tubes, 24/case.



Tube Style	Qty/Box	Part#
Carboard Clear	24	66100

GEOCEL™ 4350 COLOR METAL ROOFING & SIDING SEALANT

Geocel 4350™ provides a strong, long lasting bond to PVDF, SMP, and polyester coated steel, bare galvanized, Galvalume® metal panels, aluminum, copper, skylights, glass, brick, block, wood and vinyl siding. The 4350 is a Hybrid sealant that will provide a long lasting watertight seal and wont shrink. Exceeds ASTM C-920 Class 50 test parameters and remains permanently flexible. It offers UV resistance, and is designed for use on PVDF, SMP, and polyester coated steel, bare galvanized and galvalume panels, copper, glass, brick, wood, and Vinyl siding. Not for use on polycarbonate panels. 4 stock colors additional colors available by special order with 6 case minimum. Now available in plastic weatherproof 10 oz tubes, 24/case.

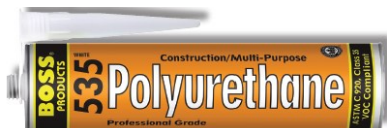


Color	Part#	Stock Color
Bright White 014	43550	YES
Light Gray / Nantucket	43522	YES
Burnished Slate 042	43541	NO
Charcoal Gray 051	43523	NO

535 POLYURETHANE CONSTRUCTION / MULTI-PURPOSE SEALANT

Boss 535 provides a long lasting bond to most substrates SMP metal, bare galvanized, Galvalume® metal panels, brick, block, wood and vinyl siding. The 535 is a that will provide a flexible watertight seal with minimal shrinkage. Ideal for joints with large movement with over 800% elongation. It offers UV resistance and is paintable after cure. Not for use on polycarbonate panels, bitumen, tar or other plasticizer releasing materials such as EPDM, Neoprene, butyl etc, not suggested for PVDF.

Now available in aluminum weatherproof 10 oz cartridges, 24/case.



Color	Part#	Stock Color
Limestone (Galvalume)	53507	YES
Gray (Charcoal)	53503	YES
Black	53502	NO
White	53501	NO
Medium Bronze	53515	NO
Tan	53519	NO

125 MULTI*SEAL SEALANT FOR ROOFING AND GUTTERS

Boss 125 is an adhesive/sealant that provides a long lasting bond to most substrates, SMP & Kynar® painted metal, bare galvanized, Galvalume® metal panels, Asphalt shingles, brick, block, wood and masonry joints. The 125 sealant that will provide a long lasting watertight seal and bonds to wet or dry surfaces. Ideal for joints with large movement with over 800% elongation. It offers UV resistant colors availability and is paintable in under an hour. Not for use on polycarbonate panels, or in structural glazing applications. Now available in plastic weatherproof 10 oz cartridges, 24/case.



Color	Part#	Stock Color
White	12501	YES
Limestone (Galvalume)	12507	YES
Black	12502	YES
Brown	12521	YES
Gray (Charcoal)	12503	NO
Aluminum Gray	12513	NO
Hunter Green	12514	NO
Medium Bronze	12515	YES
Special Bronze	12520	YES
Tan	12519	YES

231 CLEAR ADHESIVE SEALANT FOR ROOFING, METAL AND GUTTERS

Boss 231 is a totally translucent clear adhesive/sealant that provides a long lasting bond to most substrates, SMP & Kynar® painted metal, bare galvanized, Galvalume® metal panels, Asphalt shingles, masonry and vinyl. Popular as a repair product for leaks in gutters and drainpipes, it can be used in emergency repairs even in the rain. The 231 adhesive sealant is a non-stringing formulation and is easy to tool. Can be painted after cure. This sealant is a styrene acrylate and has a shrinkage factor of 20%. Not for use on polycarbonate panels, PE, PP or PTFE, or in structural glazing applications.

Packaging: weatherproof 10 oz cartridges, 24/case, Part # 23100



DMI30 SSR SEALANT NON-SKINNING STANDING SEAM SEALANT

DMI30 is a non-hardening, self-healing sealant that provides superb adhesion in all conditions; including extreme temperatures and moisture levels. DMI30 does not string during application, and exhibits outstanding webbing and cut-off characteristics. DMI30 is intended for concealed application away from sunlight. This material remains permanently tacky and flexible after curing, and provides a long-lasting and resilient seal.

Packaging: (30) 10.1oz plastic tubes / case, Part# N104001TDMI












Product Uses: DMI30 adheres to a wide variety of substrates, and as such serves as a trusted sealant in a multitude of markets. In the metal building industry, DMI30 is often used as a standing seam sealer. It adheres to painted metals, Zinalume, Galvalume, and Kynar 500. DMI30 is also used as a joint sealant in foam glass applications. Not for applications that expose the sealant to sunlight.

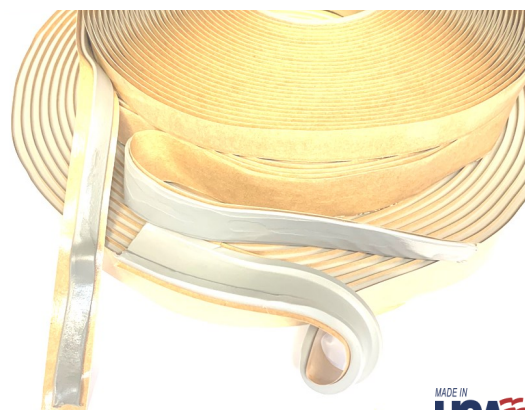
Butyl*Roll PREMIUM BUTYL TAPE SEALANT ROLL

Designed for sealing and preventing the entry of moisture, air and dust into metal lap joints, Butyl*Roll has expanded to serve a wide range of applications. Unlike tube sealants, Butyl*Roll provides a consistent shaped bead, and is quick and easy to apply. Meets or exceeds the following specifications: MIL-C-18959B TIICB, TT-C-1996A TIICB, AAMA 904.3-92 and AAMA 807.3-92 and is Made in the U.S.A.

ADVANTAGES:

A premium quality sealant roll made of 100% solids, highly rubbery, sticky and easy to apply. It shows excellent performance over a wide range of temperatures and conditions. Excellent adhesion to Galvalume and Kynar 500, non-staining and permanently flexible. Butyl*Roll is mold and mildew resistant. Unlike many of the competitors Butyl*Roll is **Approved for use on Polycarbonate Panels.**

Stock Sizes	Qty/Box	Part#	Representation of profile
Single bead styles			
3/32 x 3/8" x 45'	40	DMBT3323845	
3/32 x 1/2" x 45'	32	DMBT3321245	
3/32 x 3/4" x 45'	24	DMBT3323445	
3/32 x 1" x 45'	20	DMBT332145	
1/8" x 1" x 45'	14	DMBT18150	
1/8" x 2" x 50'	4	DMBT18250	
Double bead styles			
3/16 x 7/8" x 40'	10	DMBT31678D	
Triple bead styles			
3/16 x 7/8" x 25'	14	DMBT31678M	
3/16 x 2-1/2" x 20'	6	DMBT3162122	



MADE IN
USA



3/8"
Shown

BT-13 BUTYL TAPE SEALANT ROLL

BT-13 / Butyl*Roll TP-13 is the second DMI formularization of elastomeric butyl tape formulated for use in the metal building industry. BT-13 is a non-drying compound that does not stain and remains permanently flexible. In addition to providing superb adhesion to a variety of substrates, this material also prevents or reduces galvanic corrosion, electrolysis, noise transmission, and thermal transfer vibration. BT-13 is different than standard Butyl*Roll in that it offers more 200% more elongation and a slightly stringier consistency. BT-13 is **not** approved for use on Polycarbonate Panels.

ADVANTAGES:

BT-13 is mold and mildew resistant.
Service Temp -40degF to 180 degF
ASTM D412 Elongation 1000%
18 month shelf life.
Made in the U.S.A.



Single Bead

Size	Box Qty	Part #
3/32" x 3/8" x 45'	16	DMBT133323845
3/32" x 1/2" x 45'	16	DMBT133321245
3/32" x 3/4" x 45'	16	DMBT133323445
3/32" x 1" x 45'	14	DMBT13332145

Double Bead

Size	Box Qty	Part #
3/16" x 7/8" x 40'	14	DMBT1331678D

Triple Bead

Size	Box Qty	Part #
3/16" x 7/8" x 25'	14	DMBT1331678M
3/16" x 2-1/2" x 20'	6	DMBT133162122

DMI T3 ECONO BUTYL TAPE - BLACK TAPE

T3 Econo butyl tape is the 3rd formularization of elastomeric butyl tape formulated specifically for use in the HVAC, curtain wall & sheet metal industry. This tape has more fillers than typical Butyl*Roll tapes allowing it to be our price leader. The color is black

ADVANTAGES:

Low cost, American Made
Service Temp -40degF to 180 degF, Tensile Strength 12-14 PSI, Shelf Life 2 yrs.
ASTM D412 Elongation 600%, Odorless.

MADE IN
USA



Single Bead	Box Qty	Part #
3/32" x 3/4" x 50'	14	DMBTERVTB33203450
3/32" x 1" x 35'	16	DMBTERVTB33210035

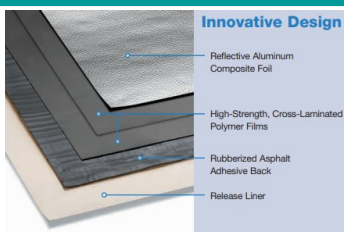
Multi Bead	Box Qty	Part #
3/16" x 7/8" x 20' T	16	DMBTERVTB31607820
3/16" x 2-1/2" x 20'	8	DMBTERVTB31625020

Sold in full pallets only, 2 pallet minimum for production, 24 boxes per pallet, Made to order.

mfm PEEL&SEAL™ MEMBRANE ROLL

Self adhesive membrane roll specifically designed for low slope residential and commercial applications. Aluminized foil facing laminated to a thick layer of rubberized asphalt.

Approvals include UL Classified, ASTM D 1970, FBC FL# 11842.2, 13025.1, 13025.2 and Texas Department of Insurance Accepted rc38



Reflective Aluminum Rolls

Size	Box Qty	Part #
6" x 33"	6	2579952306-DMI



PIPE FLASHINGS FOR METAL ROOFING



DMI PIPE FLASHINGS FOR METAL ROOFING - UNIVERSAL ROUND BASE

Used to waterproof roof penetrations in metal roofing panels. Made of pliable rubber with a 20 year limited warranty. Our flashings feature an aluminum fastening ring with grooved sealant holding base that is adjustable to most common roof pitches. These parts are 100% North American Made and qualify for the Buy American Plan. The #3 pipe flashings have a UPC Approval and Florida Building Code.

Standard (STD) flashings are made of Light Gray E.P.D.M. rubber with an application temperature range of -67 degF to 212 degF

High Temperature (High Temp) flashings are made of gray or red silicone with an application temperature range of -101 degF to 437 degF.



FL 28400.2 R1

Size	Fits Pipes	Base	Qty/Box	STD Grey	STD Black	High Temp Grey	High Temp Red (Special order)
#1	0.25" - 2.5"	4.75"	15	DML1GR	DML1BR	DML1HTG	DML1HT
#2	1.75" - 3"	6.25"	15	DML2GR	DML2BR	DML2HTG	DML2HT
#3	0.25" - 5"	7.75"	15	DML3GR	DML3BR	DML3HTG	DML3HT
#4	3" - 6.25"	9.25"	10	DML4GR	DML4BR	DML4HTG	DML4HT
#5	4.25" - 7.75"	10.5"	10	DML5GR	DML5BR	DML5HTG	DML5HT
#6	5" - 9"	13"	10	DML6GR	DML6BR	DML6HTG	DML6HT
#7	6" - 11"	14.5"	10	DML7GR	DML7BR	DML7HTG	DML7HT
#8	7" - 13"	16.5"	5	DML8GR	DML8BR	DML8HTG	DML8HT
#9	9" - 19"	25-1/4"	5	DML9GR	DML9BR	DML9HTG	DML9HT
#10	12" to 28"	34" square	5	DML10GS		DML10HTR	



#3 COLORS PIPE FLASHINGS FOR METAL ROOFING

Now available in 13 colors to complement popular metal roofing panel color choices.

Used to waterproof roof penetrations in metal roofing panels. Made of pliable rubber with a 20 year limited warranty. Our flashings feature an aluminum fastening ring with grooved sealant holding base that is adjustable to most common roof pitches. These parts are 100% North American Made and qualify for the Buy American Plan.

The #3 fit pipes 1/4" up to 5" in diameter and have an 8" round base. These pipe flashings have a UPC Approval and Florida Building Code Approval. Designed to perform in installation temperature ranges of -67 degF to 212 degF.

Color
Black
Bright Red
Cocoa Brown
Charcoal
Copper
Dark Blue
Dark Bronze
Dark Green
Light Blue
Medium Bronze
Tan
Taupe / Clay
Terracotta
White

Part#
DML3BR
DMLRD301BR
DMLRD301BN
DMLRD301NG
DMLRD301CP
DMLRD301DB
DMLRD301324
DMLRD301DG
DMLRD301LB
DMLRD301537
DMLRD301TAN
DMLRD301422
DMLRD301TC
DMLRD301WT



EAF ANGLE FLASHINGS- STEEP PITCH

Designed for use on extreme pitch metal roofs. Built in 40 degree angle to make installation on extreme pitch roofs quick and easy. Manufactured in a diamond base, in Black or Gray E.P.D.M.

Size	Fits Pipes	Qty/Box	Grey PN	Black PN
EAF	1/4" - 6"	10	EA101GA	EA101BA



DMI E.P.D.M. PIPE FLASHINGS - SQUARE BASE PYRAMID

Used to waterproof roof penetrations in metal roofing panels. Available in standard 20 year EPDM. Our flashings feature an aluminum fastening ring with grooved sealant holding base that is designed to be installed as a diamond shape. These parts are 100% North American Made and qualify for the Buy American Plan. Standard (STD) flashings are made of



E.P.D.M. rubber with a application temperature range of -67 degF to 212 degF. #1 shown	Size	Fits Pipes	Base	Qty/Box	Grey PN / Black PN
	Mini	0.125" - 0.75"	2"	30	DML0GS / DML0BS
	#2	1.25" - 3"	6"	15	DML2GS
	#3	1/4" - 4"	8"	15	DML3GS/DML3BS
	#4	3" - 6"	10"	10	DML4GS/DML4BS
	#5	4" - 7"	11"	10	DML5GS/DML5BS
	#8	7" - 13"	17"	5	DML8GS/DML8BS
	#10	12" to 28"	34"	5	DML10GS

DMI SQUARE BASE RETROFIT FLASHINGS

Designed to waterproof electrical conduit, masts, service poles and collared pipe penetrations through metal roofing panels. Includes corrosion resistant band and rivets for fastening. Accurate side markings make it easy to cut for a specific size. Light gray, square base E.P.D.M. rubber construction with UPC approval and 20 year warranty. Standard color is gray, however these parts are available by special order in black E.P.D.M. or red high temp silicone. Buy American Plan /100% N. American Made.



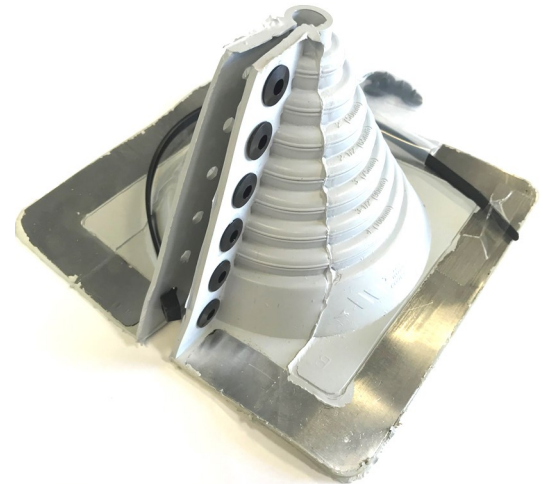
GREY E.P.D.M.

Size	Fits	Base	Qty/Box	Part#
#101	1/2"- 4"	8"	5	DML101G
#201	4"- 9-1/4"	14"	5	DML201G
#301	9-1/4"- 16-1/4"	14"	5	DML301G

RED HIGH TEMP SILICONE

Size	Fits	Base	Qty/Box	Part#HT
#102	1/2"- 4"	8"	5	DML102H
#202	4"- 9-1/4"	14"	5	DML202H
#302	9-1/4"- 16-1/4"	14"	5	DML302H

FL 28400.3 R1



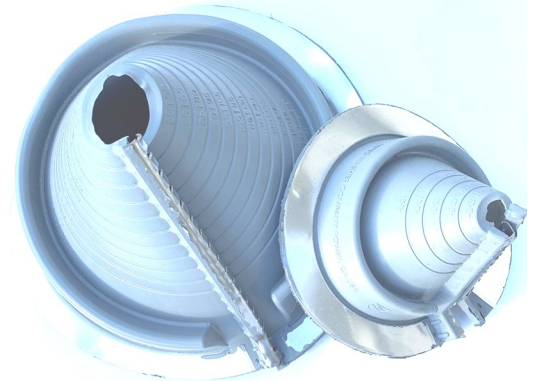
DMI ROUND RETROFIT FLASHINGS - (Zipperboot)

Designed to waterproof electrical conduit, masts, service poles and collared pipe penetrations through metal roofing panels. Stainless steel fastening teeth interlock with the rubber for fastening at the split. E.P.D.M. rubber construction with UPC approval and 20 year warranty. Standard gray to be used on mill finish metal roofing. #802 are available for special order in black EPDM or a white high temperature silicone.

Size	Fits	Base	Qty/Box	Part#GR
*#1	1/4"- 2-3/4"	6-3/10"	10	DM801G
*#2	2"- 7-1/4"	10-3/4"	10	DM802G
*#3	3-1/4"- 10"	14-1/2"	5	DM803G

Size	Fits	Base	Qty/Box	Part#WT
#802	2"- 7-1/4"	10-3/4"	5	DM802W

#802 White High Temp is not American Made or BAP, and is made of white silicone <500 deg F.



DEK-STRIP™ EXPANDABLE EDGED FLASHING

STRETCHES TO ANY SHAPE, SEALS, & STAYS

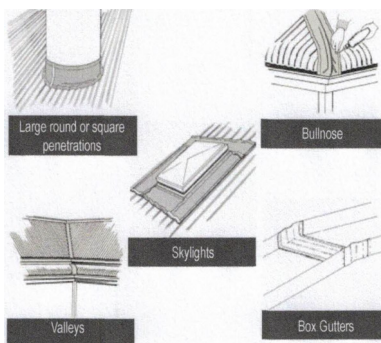
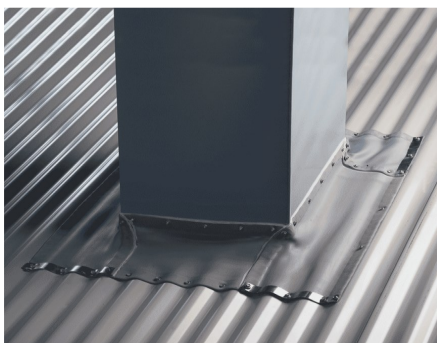
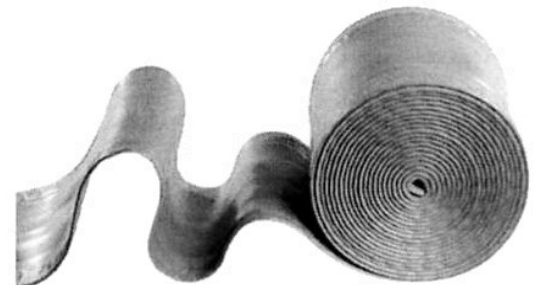
Wraps around almost any profile, paintable after installation, great for large, round pipes. Serpentine edges stretch up to 25% for added length. Handles vibration and expansion, TPE has a continuous service temperature range of -58°F to +240°F. Imported.

APPLICATIONS INCLUDE:

Large square and round ducts, chimneys, gutter detail, parapet flashings, skylights, expansion joints, stepped roof, dissimilar roof profiles, transition wall, gambrel roof and flash between dissimilar materials.

AVAILABLE SIZES:

- 7"x75' PN# DMDS775G
- 9"x75' PN# DMDS975G
- 12"x75' PN# DMDS1275G
- 18" x 50' PN# DMDS1850G (Special order)



SIDE WALL FLASHING

This low profile flashing is available in standard or retrofit (as shown). This is designed to flash in pipe or wire penetrations in metal sidewall penetrations. Available in Gray or Black EPDM in standard and white silicone in a high temperature retrofit version.

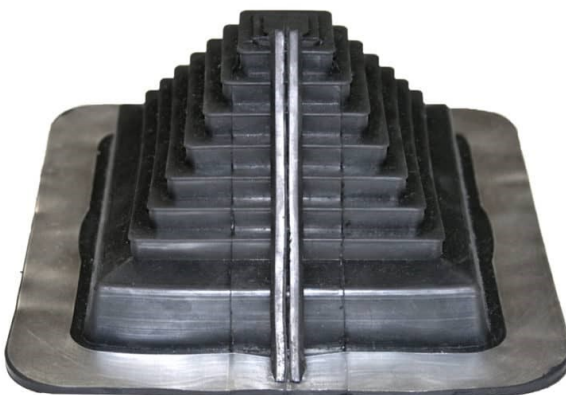
Packaged 10 pcs/box



MULTI-FLASH SQUARE VENT, SQUARE PIPE BOOT

Fits standard square pipes and vents from 3/4" to 5" and retrofit applications for 1-1/2" up to 4". High quality black E.P.D.M. with 20 year warranty. Adaptable base and no hassle stainless steel gripper to secure in retrofit applications. Square base.

Packaged 10 pcs/box
Part# DMLMFSQ101BA



MR VENT-FLASH

Designed to flash turbine vents, roof exhaust fans and goose neck vents. Inside opening 11.75" x 11.75" outside base is 24" x 24". Adaptable base designed to mold to most panel configurations and roof pitches. Made of UV protected EPDM that has an application temperature range up to 212 degF. Standard parts are gray.

Packaged 10/box, Part# DMLVFLG24



CAP FLASHINGS MASTERCAP & RIBCAP

Designed to seal up-slope profile ends. Popular applications such as: HVAC curb penetrations, skylight curb penetrations and chimney flashing points.

The MASTERCAP1 measures 3" high x inner Depth of 2" and Base width of 4-1/2" will accommodate many standing seam metal roofing profiles from 1-1/4" to 3" and popular commercial roofing panels with an 1-1/4" to 2" tall rib such as MR12 / R Panel / PBR Panel. (Old Part#DSLMC101BA/GA, DMLMC051/MC101NG) *** New Part number and packaging, **Packaged 20 pcs per box Gray part# MC101BA**

THE RIBCAP is designed specifically for 3/4" rib profile ends. **Packaged 10 pcs per box Part# DMRIBCAP** Size: 3/4" overall height x inner wall width 2" inner depth of 2-3/4".



Gray E.P.D.M.

LIGHTNING ROD PIPE FLASHING

Designed to weatherproof lightning rod or wire penetrations through metal roofing panels or ridge caps. Easy to use, with the perfect low profile design. Also used in some solar stand applications on metal roofing. Packaged 40 pieces per box. Imported. Fits 0" to 1-3/8" Part# DM1RRG



END CAP FLASHING

Constructed of gray E.P.D.M. with a 20 year warranty. Applications include skylight, cupola and ridge ends. Flexible, corrosion resistant aluminum base conforms large standing seam and trapezoidal metal roof panels. Imported. 10 pcs per box

Part# DM1DC1



FIX-A-FLASH MASTERFLASH

Solution for smaller pipes with an oversized hole in your metal panel, and solution for overflash application of old pipe flashings. E.P.D.M. Black 20yr warranty rubber and adaptable base. Fits 0" to 15" pipes with a 19-1/2" base. Buy American Plan. 5 pcs per box Part# FF851BC



MULTI-PART MASTER FLASH™

Easy to use 4 in 1 flashing, up to 4 cables or wires per flashing. Stainless steel gripper to secure in retrofit applications. Accommodates four 1/4" lines and 1 pipe 1/4" - 2-3/4". B.A.P.

Black E.P.D.M.
10/box
DMLMP101BA

Red high temp
10/box
DMLMP102RA



HEX NUT-SETTERS AND BIT TIPS

DMI distributors offer magnetic and LSC Hex drivers for the installation of hex and HWH fasteners. LSC has a pressure spring instead of a magnetic disc to hold the fastener making them the choice for driving stainless steel and other non-magnetic hex head fasteners. We also offer a variety of Phillips, Square, and T-25 Drive drive bit tips. New retail shelf packaging coming 4th qtr 2023 below. These parts will come in sealable plastic bins.

Plastic Bins	Bin/Case	Part#
1/4" x 2.5" Hex LSC	100/400	DMIPSSHL14V
5/16"x 2.5" Hex LSC	100/400	DMIPSSHL516V
5/16" SCAMP MAG	100/400	SCAMP516PD
3/8" x 2.5" Hex LSC	100/400	DMIPSSHL38V

Bagged	Bag/Box	Part#
1/4" x 3" Hex LSC	25/100	DMI3SSHL14
5/16"x 3" Hex LSC	25/100	DMI3SSHL516
5/16" SCAMP PTD	1/100	SCAMP516PD
3/8" x 3" Hex LSC	25/100	DMI3SSHL38
1/4" x 3" Hex Mag	25/100	DMI3LMSHL14
1/4" x 6" Hex Mag	1/100	DMI9TIP146
5/16"x 3" Hex Mag	25/100	DMI3LMSHL516
5/16"x 6" Hex Mag	1/100	DMI9TIP5166
3/8" x 3" Hex Mag	25/100	DMI3LMSHL38
#2 Phillips x 2"	10/100	DMI9TIP2P2
#3 Phillips x 2"	10/100	DMI9TIP3P2
#2 Square x 1"	10/100	DMI9TIP2S1
#2 Square x 2"	10/100	DMI9TIP2S2
T-25 x 1"	10/100	DMI9TIP25T1

DRILL BITS

Direct Metals, Inc offers quality drill bits from a variety of high quality manufacturers. Double ended drill bits for steel panels, SDS drill bits for masonry. Full package orders only.

Available Sizes	Use	Useable	Qty	Part #
1/8" x 2" #30 DE	Steel	1"	12	DMI9DEDB2ATF
1/4" x 6-3/8" SDS	Concrete	4"	25	DMI9DB14638SDS
7/32" x 2.5"	Steel		12	DMI9SWSN7/32
1/8" x 2.5"	Polycarbonate		12	DMI9SWSN1/8
3/8" x 4"	Polycarbonate		6	DMI9DB384

	Hand Seamer <u>Description</u> First Stage Finishing Stage	<u>Part#</u> 03-520 03-521	<u>Quantity</u> <u>Box/Case</u> 1/7 1/7
	Forged Hand Seamer <u>Description</u> 3" 6" 9"	<u>Part#</u> 03-525 03-526 03-527	<u>Quantity</u> <u>Box/Case</u> 6/24 6/24 6/12
	Double Layer Hand Seamer <u>Description</u> 1" x 3" 45 deg 1" x 6" 45 deg 1" x 3" 90 deg 1" x 6" 90 deg	<u>Part#</u> 03-528 03-530 03-529 03-531	<u>Quantity</u> <u>Box/Case</u> 2/36 2/24 2/36 4/24
	Hand Seamer <u>Description</u> 3" 3" Double Layer 1" x 6" Double L 1" x 9" 1" x 12" 2" x 6" Double L 3" x 6" Double L 2" x 3" Double L	<u>Part#</u> 03-535 03-536 03-539 03-540 03-541 03-546 03-547 03-549	<u>Quantity</u> <u>Box/Case</u> 2/36 2/36 4/24 2/16 2/16 2/12 2/12 2/24
	Aviation Snips <u>Description</u> Straight Cut	<u>Part#</u> 36-317	<u>Quantity</u> <u>Box/Case</u> 6/48
	Left Cut	36-318	6/48
	Right Cut	36-319	6/48
	Offset Long Left Cut	36-323	6/36
	Offset Long Right Cut	36-324	6/36
	Vertical Offset Left Cut	36-325	6/36
	Vertical Offset Left Cut	36-326	6/36
	Drill-Operated Aviation Snips <u>Description</u> Kit	<u>Part#</u> 36-320	

	Folding Tool <u>Description</u> 12" 18" 24"	<u>Part#</u> 03-532 03-533 03-534	<u>Quantity</u> <u>Box/Case</u> 4/24 3/18 2/12
	Hemming Tool <u>Description</u> 1" x 14.5" 1-1/2" x 17.25" 1-1/2" x 19" 1-1/2" x 20"	<u>Part#</u> 03-560 03-561 03-562 03-563	<u>Quantity</u> <u>Box/Case</u> 2/12 2/12 2/12 2/12
	Drip Edge Bender <u>Description</u> 18" 24"	<u>Part#</u> 03-564 03-565	<u>Quantity</u> <u>Box/Case</u> 2/12 2/12
	Clinchers <u>Description</u> 45 deg 180 deg 90 deg	<u>Part#</u> 03-543 03-542 03-544	<u>Quantity</u> <u>Box/Case</u> 1 30 1
	Tin Snips <u>Description</u> 8" Tinsnips 10" Tinsnips 12" Tinsnips	<u>Part#</u> 36-352 36-353 36-354	<u>Box/Case</u> 6/24 5/30 6/24
	Shears <u>Description</u> 8" Multi Purpose Straight	<u>Part#</u> 36-480	<u>Box/Case</u> 6/36
	8" Multi Function	36-481	6/36
	10" Multi Purpose Offset	36-480	6/36
	Aluminum Scissors <u>Description</u> 12"	<u>Part#</u> 36-374	<u>Box/Case</u> 3/24
	12" Compound	36-373	4/24

PRIMEGRIP PRIMEGRIP PRIMEGRIP



PROFILEVENT™ ROLLS, STICKS AND ANCHOR CLIPS

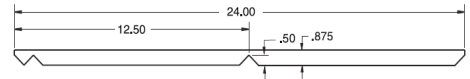
ProfileVent is a single layer ridge vent on a roll or now in limited profiles also available as a 3' stick. It is strong, durable, modified polyester, non-woven, non-wicking, fiber based matting designed for specific metal roofing profiles.

ProfileVent provides 17 sq in per lineal ft net free area ventilation. As with other attic ventilation systems, ProfileVent must be installed with soffit vents to meet HVI recommendations. 3/4" Rib / MR9 profile maintains a Miami-Dade product control approval # 12-0724.3 by the manufacturer of the product.

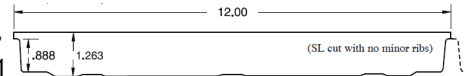
Rolls: Sold in 2 roll (3" wide x 50' long) shrink wrapped packages. Please plan for installation on both sides of the ridge.



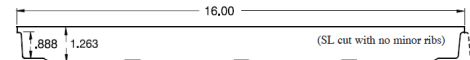
5V CRIMP
DMI2T1282PV



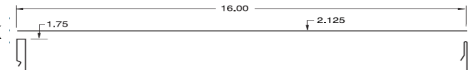
1" SNAPLOCK 12"
DMI2799908V1



1" SNAPLOCK 16"
DMI1564PV



1-3/4" SNAPLOCK
DMI1606PV



RAZORBACK RIDGE VENT PLUS

Long life universal ridge vent rolls for metal roofing panels. Quick and easy installation directly to ridge cap with full width positioning adhesive tape strip. Long term heat resistant coatings and flame retardants for extended product life. Full width adhesive designed for higher adhesion in cold climates. Made in the U.S.A. with all American Made components. This product has not been tested for Building Code Compliance, not for use in the State of Florida. Please allow a minimum of 25% compression on installation.

Advantages include:

- Inexpensive, quick and easy to install
- 40 year limited warranty, with fire retardant longlife coatings
- Designed for many roof panel configurations and pitches from 2/12 to 20/12
- Low profile attractive installed appearance
- Does not scratch painted metal surfaces



MADE IN
USA

Available Sizes	Qty/Box	Part#
1-1/2" x 2" x 10'	10	DMIRB1122010P
1-3/4" x 2" x 10'	10	DMIRB1342010P
2" x 2" x 10'	10	DMIRB2002010P
2.12" x 2" x 10'	10	DMIRB2122010P

Galvalume Goose Neck Vents

Assembled with a removable screen, peel back underside adhesive. Quality galvalume construction, now available with or without damper. Made in the U.S.A. No warranty, no returns on this product.

This product has no approvals or testing, please check with your local building department before ordering.

10" Tall x 10" deep x width.

Standard stock sizes are 4" and 10" other widths can be made to order.

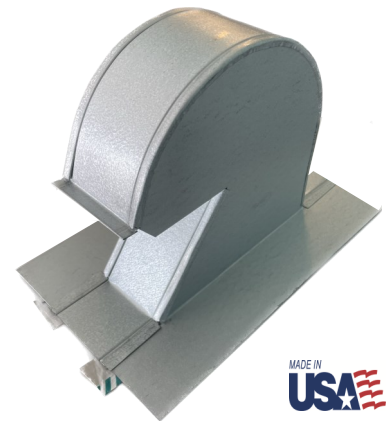
Also available to be made to order in copper. Made in the U.S.A.

Without Damper

Size	Qty/Box	Part #
4"	14	DMI4GNVCOGLMES
10"	6	DMI10GNVCOGLMES

With Damper and Screen

Size	Qty/Box	Part #
4"	14	DMI4GNVDPCOGLMES
6"	10	DMI6GNVDPCOGLMES
10"	6	DMI10GNVDPCOGLMES



MADE IN
USA

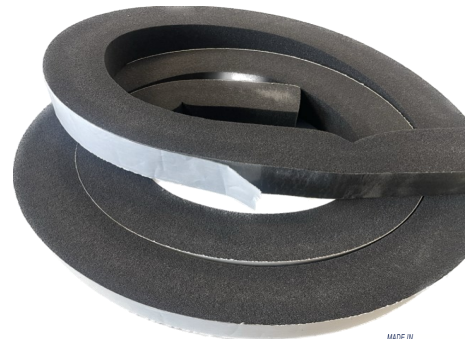
DIRECT*SEAL LONG LIFE UNIVERSAL CLOSURE ROLLS

Universal closure rolls designed to seal gaps in metal roofing, window and door installations. When compressed, Direct*Seal will become a water, pest, wind, and dust barrier in valley, hip and other panel to panel or panel to trim applications. Direct*Seal can also be used to close in gaps around windows and doors to help increase the energy efficiency of your building. Direct*Seal comes fully expanded in a single wrapped roll and is compressed at time of application.

Application Guide: Compression of the product is required to achieve the following:
25% Compression required for dust & sound protection, pest resistance and thermal insulation.
50% Compression required for wind, air and rain protection up to 20 psf.

Advantages:

- UV protected foam with no asphalt content (non-streaking, non-staining)
- Designed for any pitch from 2/12 to 20/12
- Will not scratch panel finishes
- Easy to apply with a full width peel back adhesive strip



Available Sizes	Qty/Box	Part#
1" x 1" x 20'	20	DDS101020
1-1/2" x 1-1/2" X 20'	10	DDS151520
2" x 2" x 10'	10	DDS202010

Color : Gray



BG1 EXPANDING UNIVERSAL CLOSURE ROLLS

Precompressed, self-expanding polyurethane foam with acrylate dispersion impregnation. Used for sealing joints and seams in metal panels, gaps around door and window frames and expansion joints in buildings/construction. Ships in a compressed roll, expands to fill gaps between mechanically fixed panels and trim. Typical expansion occurs in 8-10 hours. Made in Europe.

Application Guide: Compression of the product is required to achieve the following:
20% Compression required for dust & sound protection, and thermal insulation
50% Compression required for wind, air, dust & sound resistance, and insulation
70% Compression required for rain protection up to 6.25 psf
80% Compression required for rain protection up to 21.57 psf



Available Sizes	Qty/Box	Part#
(1/4) 1" x 1" x 20'	12	DMI21305091
(3/8") 1" x 1-1/2" X 15'	12	DMI21305092

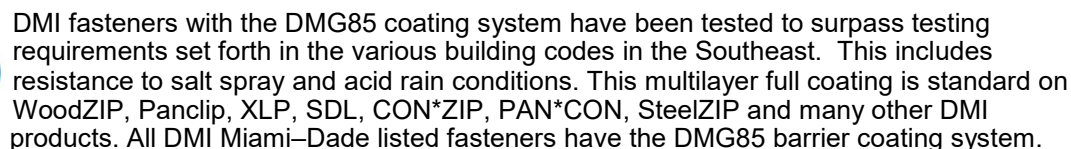
Full carton sales only. Color: Black

EMSEAL AST Hi-Acrylic UNIVERSAL CLOSURE ROLLS

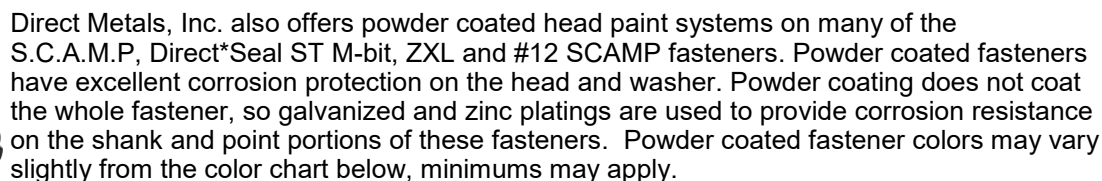
Self-adhering tape seal made from resilient, open-cell polyurethane foam impregnated with a water-based acrylic-modified asphalt emulsion. High compression levels are required for water tightness in water run-off applications; lower compression can be used, for example, for snow seal at roof ridges. Used to seal out dust, air, wind-driven snow and moisture through joint details in metal buildings and roofs. Do not use on Polycarbonate or PVC panels. Refer to DMI website for compression requirements or ask your salesperson for a product flier.

Available Sizes	Qty/Box	Part#
(1/4) 1" x 1" x 19.58'	26	MTLBTAST14
(3/8") 1" x 1-1/2" X 13'	24	MTLBTAST38

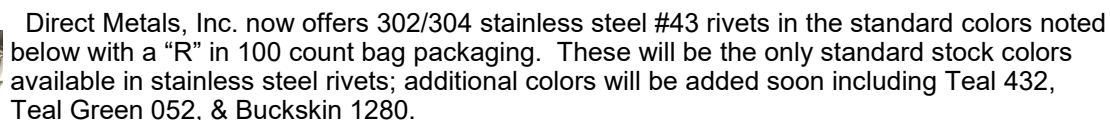


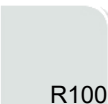






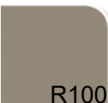





























**DMG85**

PowderCoat



Rivets



 R100	 R100	 R100	 R100	 R100		 R100	 R100	 R100	 R100	 R100
014 Bright White	001 White	348 Bone White	330 Warm White	553 Parchment		385 Patina	047 Colony Green	660 Hemlock	232 Evergreen	732 Denali Green
 R100	 R100	 R100	 R100	 R100		 R100	 R100	 R100	 R100	 R100
422 Taupe/Clay	109 Sand Beige	415 Beige	248 Light Stone	548 Ivory		928 Terracotta	102 Crimson Red	798 Hartford/Fern	925 ClassicGreen	228 Forest Green
 R100		 R100		 R100		 R100	 R100	 R100	 R100	 R100
020 Tan (STD)	230 Desert Brown	110 Cocoa Brown	374 Dark Brown	537 Medium Bronze		890 Red (STD)	691 Barn Red	074 Colonial Red	393 Burgundy	432 Blue Teal
 R100	 R100	 R100	 R100	 R100		 R100	 R100	 R100	 R100	 R100
578 Old Town Gray	302 Pearl Gray	850 Ash Gray	324 Dark Bronze	042 Burnished Slate		023 Gloss Black	507 Matte Black	421 Navy	843 Gallery Blue	012 C./H. Blue
 R100	 R100	 R100	 R100			 Metallics	 R100	 R100	 R100	 R100
696 Pewter Gray	091 Zinc Gray	051 Charcoal Gray	416 Slate Gray			Metallic Paints >	1161 Silver	1160 Champagne	1162 Zactique	1116 Copper Pen

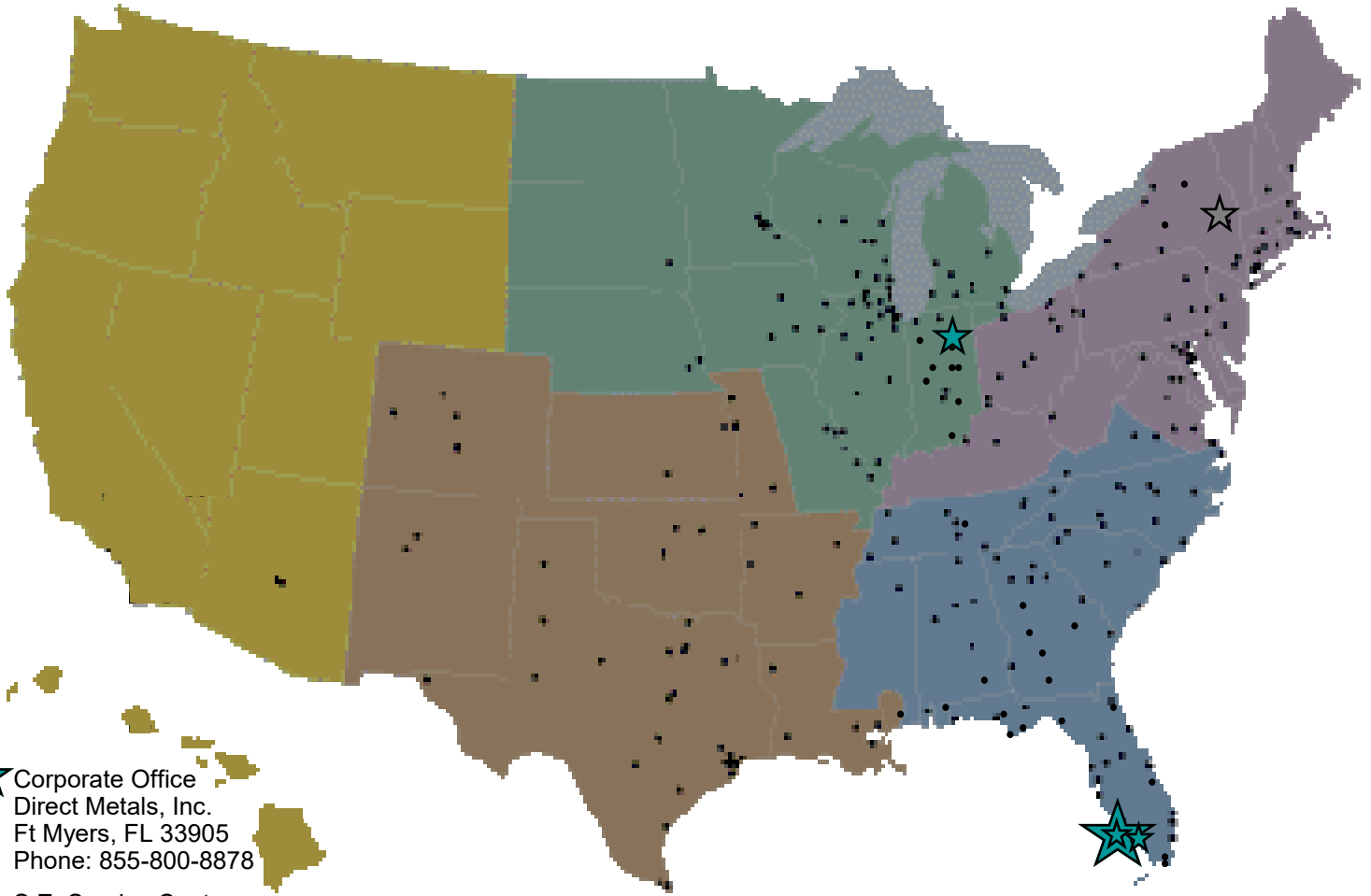
To find a registered DMI distributor call 855-800-8878

www.directmetalsinc.com



Distributor order entry or product inquiries:
Toll Free Phone: 855-800-8878
Toll Free Fax: 855-800-8877
orders@directmetalsinc.com
Website: www.directmetalsinc.com

We are proud to have over 1600 distributors across the United States of America. These distributors are serviced through our warehousing locations strategically placed to offer fast service and low shipping cost on our quality products.



★ Corporate Office
Direct Metals, Inc.
Ft Myers, FL 33905
Phone: 855-800-8878

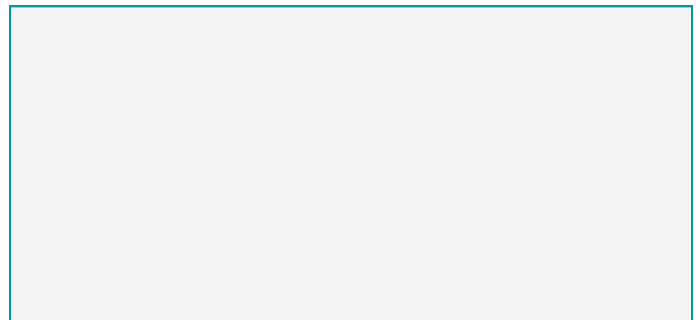
★ S.E. Service Center
1719 Baseline Ct.
Ft Myers, FL 33905
Phone: 239-599-8527
Fax: 239-599-8545
Inquiries: orders@directmetalsinc.com

★ Low Slope Roofing Service Center
4244 Edison Ave
Ft Myers, FL 33916
Inquiries: orders@directmetalsinc.com

★ Midwest Service Center:
Direct Metals of Indiana
1800 Jim Neu Drive, Suite 3
Plymouth, IN 46563
Phone: 574-935-3644
Fax: 574-935-3643
inquiries: orders@directmetalsinc.com

★ Interior Construction Products Service Center, N.Y.

Your Direct Metals, Inc. distributor is:



www.directmetalsinc.com