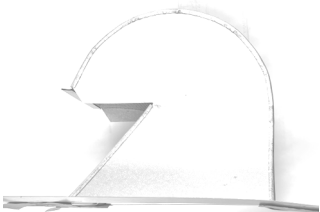




DMI SHINGLE ROOFING ACCESSORY CATALOG May 1, 2022



Solutions for:
Asphalt Shingle Roofing
Tile Roofing Systems

2022 Spring
Update Edition



The Bullet Gooseneck Vent

The Bullet Vent is popular for kitchen and dryer vent exhausts that terminate through a roofing surface. They are designed to be a no-leak and aesthetically pleasing alternative to old style metal gooseneck vents. This innovative product comes with a built in diverter/cricket, a debris screen and rain damper.

Features & Benefits:

- Fast Installation, no painting needed, colored throughout.
- 100% UV protected HD Polypropylene carbonate material.
- Will not crack in hot or cold installations.
- Very affordable with a 35 year manufacturers warranty.
- Built in cricket for enhanced water flow-around.
- Paintable
- Made in the U.S.A.
- Florida Product Approval # FL 25870.2 - R2



5 colors available to in 8" and 10"

Specifications

UV Protected Polypropylene Carbonate with removable black plastic damper and debris/pest screen.

Service Temp: -59 deg c to 90 deg c

Flange Size: 8" = 14.5 x 16", 10" = 16.5 x 18" flange, 9" = 15.5 x 17.25"

ASTM E330-02, FBC Code 6th Edition 2017 Section 1708.2 compliant.

Wind Uplift Resistance: -305 PSF (12 fasteners)

Design wind uplift pressure resistance in ASD with safety factor of 2-1.

Florida Product Approval # FL25870.2, Evaluation Report 17-209-GN-ER

Environmental Resistance: Excellent resistance to Ozone, UV, water, alcohol, weak acids & chlorine.

Selection

9" Tall for Shingle Roof Installation

<u>Available Size/Color</u>	<u>Qty/Box</u>
8" Black	8
8" Brown	8
8" Gray	8
8" Weathered Wood	8
8" White	8
10" Black	8
10" Brown	8
10" Gray	8
10" Weathered Wood	8
10" White	8

12.5" Tall for Tile Roof Installation

<u>Available Size/Color</u>	<u>Qty/Box</u>
9" Black	
9" Brown	8
9" Gray	8
9" Terracotta	8
9" Weathered Wood	8
9" White	8

Complementary boots also available
see Bullet Boots for plumbing stacks.



Florida Product Approval
#FL 25870.2



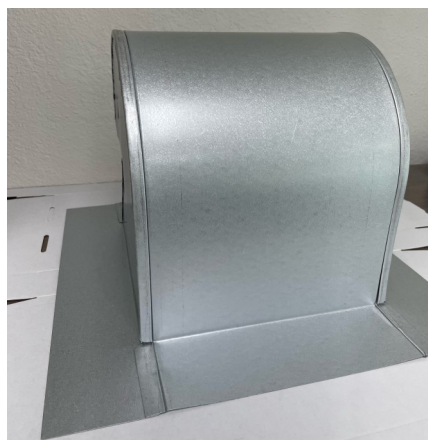
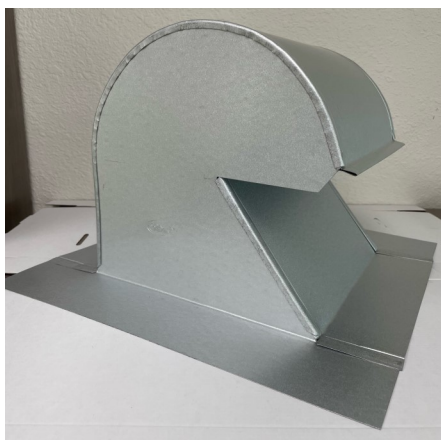
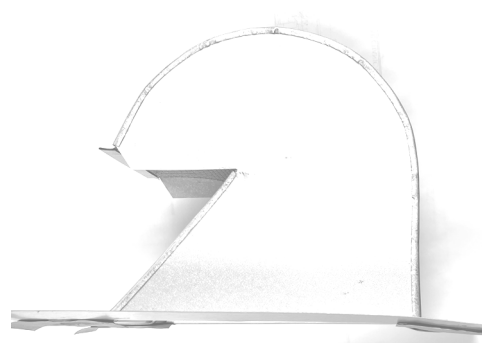
Galvalume Gooseneck Vent



Used for attic ventilation, to cover exhaust pipes, kitchen or dryer vent exhausts. Assembled with a removable screen designed to prevent entry by rodents or birds, and peel back underside butyl adhesive. Quality galvalume construction, now available with or without damper. Made in the U.S.A.

Standard stock parts are 4" and 10" widths. We can produce other sizes including 6" width. In fact we can produce this product in almost any width from 4" to 48", minimums and leads times apply.

Galvalume is our standard but these vents can also be produced in G90 galvanized or copper by special order.



Specifications

Components used in the manufacturing of the Galvalume Gooseneck
26 GA AZ55 Galvalume, DMI Butyl *Roll Butyl Tape, Aluminum Damper
,Galvanized Expanded Metal Mesh Screen.

No warranty and no returns on this product.

This product has no approvals or certifications, please check with your local building department before ordering.

4" Galvalume with or without damper

Flange Size 10.25" x 15.75"
Height 10.25"
Throat Opening 10" x 4"
Mouth Opening 4.25" x 4"

10" Galvalume with or without damper

Flange Size 16" x 15.75"
Height 10.25"
Throat Opening 10" x 10"
Mouth Opening 4.25" x 10"

Selection

<u>Size/Type</u>	<u>Qty/Box</u>	<u>Part#</u>
4" no damper	14	DMI4GNVCOGLMES
10" no damper	6	DMI10GNVCOGLMES
4" with damper	14	DMI4GNVDCOGLMES
10" with damper	6	DMI10GNVDCOGLMES

Made in Florida, U.S.A.



Stealth II Off Ridge Vent

The Bullet Stealth Mini Off Ridge Vent is popular for air exhaust or air intake. Designed for use in both shingle and tile roof applications it will allow hot and humid air to escape the attic while internal baffles work to keep out precipitation and pests. This innovative product is designed with an integral cricket diverter to avoid build up of fallen leaves. The strong polypropylene carbonate construction avoids dents and damage during installation and has high resistance damage due to hail.

Features & Benefits:

- Fast Installation, no painting needed, colored throughout.
- 100% UV protected HD Polypropylene carbonate material.
- Will not crack in hot or cold installations.
- 35 year manufacturers warranty.
- Built in cricket for enhanced water flow-around.
- Paintable
- Will not rust
- Tested to Pass TAS100 Wind Driven Rain Testing
- Made in the U.S.A.
- Florida Code Approval # FL41487, FL41489



Specifications

Material Type : Heavy Duty Polypropylene Carbonate

Service Temp: -59 deg c to 90 deg c

Stealth 2 low profile for shingles 24" vent Test 2417T0002

Dimensions: 4.875" Tall x 24" x 24" (triangular back shape)

Net Free Area: 27 Sq in.

Material Type: Heavy Duty Polypropylene Carbonate

Stealth 2 tall/high profile for tile 24" vent Test 2417T0003

Dimensions: 8.5" Tall x 24" x 24" (triangular back shape)

Net Free Area: 31 sq in.

Weather Testing: ASTM Tested TAS 100(A), passed 110 MPH wind driven rain test with no leakage. Test 2417T000(2/3) with optional wind diverter.

Structural Testing: ASTM E330-02

1/2" OSB -105 PSF (correction factor 2-1)

15/32" Plywood -142 PSF (correction factor 2-1)

Environmental Resistance: Excellent resistance to Ozone, UV, water, alcohol, weak acids & chlorine.

Product Category: Roofing Accessories that are an Integral part of the Roofing System. Designed and tested for Plywood deck or O.S.B.

Product Installation: Refer to Page 2

Made in Florida, U.S.A.



Lead Free
Made in America

Model Selection

Low Profile for Shingle Roof Installation

	Qty/Box	Part#
24" S2 Black	2	BVS2ORVBL
24" S2 Brown	2	BVS2ORVBN
24" S2 Gray	2	BVS2ORVGY
24" S2 Weathered Wood	2	BVS2ORVWW
24" S2 White	2	BVS2ORVWT
S2 Diverter Black		BVS2DIVBL

Tall Profile for Tile Roof Installation

	Qty/Box	Part#
24" S2T Black	2	BVS2TORVBL
24" S2T Brown	2	BVS2TORVBN
24" S2T Gray	2	BVS2TORVGY
24" S2T Terracotta	2	BVS2TORVTC
24" S2T Weathered Wood	2	BVS2TORVWW
24" S2T White	2	BVS2TORVWT
S2 Diverter Black		BVS2DIVBL

Complementary products

Bullet Boots for plumbing stacks

Bullet Gooseneck for Dryer and kitchen vents

Stealth II Mini Off Ridge Vent



Bullet Boots complement Bullet Goose Neck and off-ridge vents for a clean long life installation.

Stealth Off Ridge Vent



The Bullet Stealth Off Ridge Vent is popular for air exhaust or air intake. Designed for use in both shingle and tile roof applications it will allow hot and humid air to escape the attic while internal baffles work to keep out precipitation and pests. This innovative product is designed with an integral cricket diverter to avoid build up of fallen leaves. The strong polypropylene carbonate construction avoids dents and damage during installation and has high resistance damage due to hail.



Lead Free
Made in America

Features & Benefits:

- Fast Installation, no painting needed, colored throughout.
- 100% UV protected HD Polypropylene carbonate material.
- Will not crack in hot or cold installations.
- 35 year manufacturers warranty.
- Built in cricket for enhanced water flow-around.
- Paintable
- Will not rust
- Tested to Pass TAS100 Wind Driven Rain Testing
- Made in the U.S.A.
- Florida Building Code Approval #FL41489 , FL41487

Specifications

Material Type : Heavy Duty Polypropylene Carbonate
Service Temp: -59 deg c to 90 deg c
Stealth low profile for shingles 39" vent Test: 2417T0002
Dimensions: 4.875" Tall x 39" x 35" (triangular back shape)
Net Free Area: 47 Sq in.

Material Type: Heavy Duty Polypropylene Carbonate
Stealth 2 tall/high profile for tile 24" vent Test: 241T0003
Dimensions: 8.5" Tall x 39" x 35" (triangular back shape)
Net Free Area: 62 sq in.

Weather Testing: ASTM Tested TAS 100(A), passed 110 MPH wind driven rain test with no leakage. Test 2417T000(2/3) with optional wind diverter.

Structural Testing: ASTM E330-02

1/2" OSB -105 PSF (correction factor 2-1)
15/32" Plywood -142 PSF (correction factor 2-1)

Environmental Resistance: Excellent resistance to Ozone, UV, water, alcohol, weak acids & chlorine.

Product Category: Roofing Accessories that are an Integral part of the Roofing System. Designed and tested for Plywood deck or O.S.B.

Product Installation: Refer to Page 2

Made in Florida, U.S.A.

Model Selection

Low Profile for Shingle Roof Installation

	Qty/Box	Part#
39" Stealth Black	2	BVSORVBL
39" Stealth Brown	2	BVSORVBN
39" Stealth Gray	2	BVSORVGY
39" Stealth Weathered Wood	2	BVSORVWW
39" Stealth White	2	BVSORVWT
S2 Diverter Black		BVS2DIVBL

Tall Profile for Tile Roof Installation

	Qty/Box	Part#
39" Stealth Black	2	BVTORVBL
39" Stealth Brown	2	BVTORVBN
39" Stealth Gray	2	BVTORVGY
39" Stealth Terracotta	2	BVTORVTC
39" Stealth Weathered Wood	2	BVTORVWW
39" Stealth White	2	BVTORVWT
S2 Diverter Black		BVS2DIVBL

Complementary products

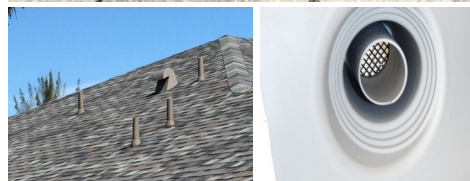
Bullet Boots for plumbing stacks
Bullet Gooseneck for Dryer and kitchen vents
Stealth II Mini Off Ridge Vent



The Bullet Boot is designed to be an aesthetically pleasing and environmentally responsible alternative to old style toxic lead pipe boot flashings for single roofing pipe penetrations.

Features & Benefits:

- Fast Installation, no painting needed.
- Colored throughout to complement shingle colors.
- 100% UV protected flexible TPE construction.
- Non Staining and adapts to almost any roof pitch.
- Very affordable with a 35 year manufacturers
- Covers the pipe inside and out and includes built in
- Adaptable to multiple roof pitches
- Made in the U.S.A.
- Florida Product Approval # FL 25870.1-R2



Specifications

UV Protected TPE Material with plastic removable pest screen.

Tensile Strength: 1825 psi ASTM D412

Tear Strength: 195 lbs/in ASTM D624

Service Temp: -59 deg c to 90 deg c



Wind Uplift Resistance: -45 PSF (8 fasteners) -160 PSF (16 fasteners)

Design wind uplift pressure resistance in ASD with safety factor of 2-1.

Florida Product Approval # FL25870.1, Evaluation Report 17-209-BB-ER

Environmental Resistance: Excellent resistance to Ozone, UV, water, alcohol, weak acids & chlorine.

Selection

Available Size/Color	Qty/Box
1-1/2" White	16
1-1/2" Brown	16
1-1/2" Gray	16
1-1/2" Black	16
1-1/2" Weathered wood	16
1-1/2" Tan	16
1-1/2" Terracotta	16
2" White	16
2" Brown	16
2" Gray	16
2" Black	16
2" Weathered wood	16
2" Tan	16
2" Terracotta	16
3" White	16
3" Brown	16
3" Gray	16
3" Black	16
3" Weathered wood	16
3" Tan	16
3" Terracotta	16
4" White	8
4" Brown	8
4" Gray	8
4" Black	8
4" Weathered wood	8
4" Tan	8
4" Terracotta	8

Complementary Products

Now available to complement bullet boot colors and performance:
Stealth Off Ridge Vents
Bullet GooseNeck Vents



Florida Product Approval
#FL 25870.1-R2



The Bullet California Boot



The Bullet California Boot is a taller version of the original Bullet Boot flashing with a wider flange base. They are designed to be an aesthetically pleasing and environmentally responsible alternative to old style toxic lead pipe boot flashings for single roofing pipe penetrations.

Features & Benefits:

- Fast Installation, no painting needed.
- Colored throughout to complement shingle colors.
- 100% UV protected flexible TPE construction.
- Non Staining and adapts to almost any roof pitch.
- Very affordable with a 35 year manufacturers warranty.
- Covers the pipe inside and out and includes built in pest screen
- Adaptable to multiple roof pitches
- Made in the U.S.A.



Bullet Boot next to Bullet California Boot



Specifications

UV Protected TPE Material with plastic removable pest screen.

Tensile Strength: 1825 psi ASTM D412

Tear Strength: 195 lbs/in ASTM D624

Service Temp: -59 deg c to 90 deg c

This version of the bullet boot has not been evaluated for the Florida Product Approval Process / Approval

Environmental Resistance: Excellent resistance to Ozone, UV, water, alcohol, weak acids & chlorine.

Selection

<u>Available Size/Color</u>	<u>Qty/Box</u>
1-1/2" Brown	8
1-1/2" Black	8
1-1/2" Weathered wood	8
2" Brown	8
2" Black	8
2" Weathered wood	8
3" Brown	8
3" Black	8
3" Weathered wood	8

Slip over protection for lead pipe flashings

- Permanently Stops Squirrel And Rodent Damage
- One Piece Molded Guard With UV Protected Color Throughout
- Improved Appearance
- Removable To Allow Plumber Access
- Available In Two Sizes Covering All Residential Roof Penetrations
- Prevents Costly Roof Vent Boot Damage
- Installs in Minutes
- Made in the U.S.A.
- **10 Year Guarantee**



BEFORE



AFTER

SMALL ROOF VENT BOOT GUARD AVAILABLE IN 6 COLORS

Terracotta, Grey, White, Brown, Green, Black
25 PIECES PER BOX fits 1-1/2" to 2" vents

LARGE ROOF VENT BOOT GUARD AVAILABLE IN 5 COLORS

Grey, White, Brown, Green, Black
16 PIECES PER BOX fits 3" vents

EX-LARGE ROOF VENT BOOT GUARD AVAILABLE IN 4 COLORS

Grey, White, Brown, Black
12 PIECES PER BOX fits 4" vents



INSTALLATION INSTRUCTIONS

1. Damaged lead boot to be replaced prior to installing this product, making sure lead is tightly formed around plumbing pipe. Note: It may be necessary to form lead boot into cylindrical shape by tapping with a hammer.
2. Back out set of screws at base of boot guard. Place over lead stack. Lightly tap into place. Snug set screws into lead stack. Note: Additional screws provided for use on 2" lead boots.
3. Product has been molded to accommodate standard pitch roofs. To achieve steeper angle, simply trim material from rear of boot guard using pitch marks provided on rear of product. Starting at 5/12" on bottom and 8/12" on top mark.

Product Guarantee: Manufacturer will replace product 10 years from date of purchase if it fails to protect lead boot from rodent damage after being properly installed.



Residential MasterFlash



The Residential MasterFlash was designed for use with residential asphalt/fiberglass shingles and clay/concrete tile roofing systems. It is a multi-sized high quality flashing designed to flash plumbing stack pipes and type B vents.

Features & Benefits:

- 20 year warranty .
- Quality EPDM or Silicone (high temp) rubber boot
- Lead Free - Aluminum base is malleable and longlife
- IAPMO Certified # 3121, C20 ASTM rubber
- Built in 20 deg pitch for adaptability to roof pitch including 45 deg



Specifications

Standard Residential Masterflash

Boot Flashing: Black EPDM, ASTM C20

Service Temp: -30 deg F to 275 deg F

Environmental Resistance: Excellent resistance to Ozone, UV, water. Made in N. America

High Temperature Residential Masterflash

Boot Flashing: Red Silicone, ASTM C20

Service Temp: -30 deg F to 437 deg F

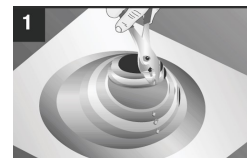
Environmental Resistance: Excellent resistance to Ozone, UV, water. Made in N. America

Selection

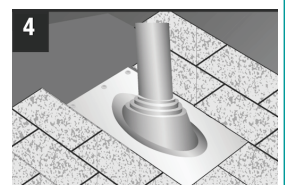
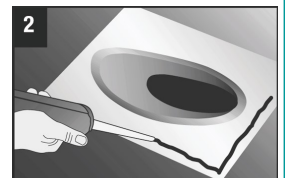
Size / (Base Size)	Fits	Qty/Box	Part#EPDM	Part# Silicone
Mini (16" x 19.25")	1/4" - 3"	10	DMLRA0MBA	DMLRA0MHTR
#1 (20" x 24")	3" - 8"	10	DMLRA1MBA	DMLRA1MHTR
#2 (26" x 30")	8" - 11"	10	DMLRA2MBA	DMLRA2MHTR
#3 (35" x 35")	11" - 18"	10	DMLRA3MBA	DMLRA3MHTR

Installation

1. Pull tab design to correct pipe size
2. Apply sealant to back of flashing, (High quality Polyurethane or tested sealant)
3. Remove shingle around pipe and slide flashing over pipe
4. Fasten flashing to roof
5. Cut shingles to fit to the top of the flashing allowing the bottom of the flashing metal base to set on top of tiles



Contact DMI for
MSDS information



Contractors' Choice

Ridge Vent for Asphalt, Slate, and Cedar Shingle Roofs

Coil of nails included in every roll.

- 40 year limited warranty
- Fits any pitch 2:12– 20:12
- One person rollout installation on caps or panels
- Almost invisible from the curb
- No waste—use leftovers on next job
- Will not support a flame—Class A Fire Rating



- Made in USA
- Made from over 90% recycled fiber; over 30% post-consumer content

Contractors' Choice 20' Roll Product & Freight Specifications

Item Name	Contractors' Choice 1/2" Roll
Item Description	20' L x 10½" W x ½" H
Item#	DMI00020
Barcode Package	897481000205
Barcode Pallet	10897481000202
Lineal Ft per Package	20'
Package Weight	4 lbs.
Package Size	15" x 15" x 10½"
Items per package	1
Packages per Pallet	24
Lineal Ft per Pallet	480'
Pallet Weight	194 lbs.
Lineal Ft per 53' truckload	28,800'
Packages per 53' truckload	1,440
Pallets per 53' truckload	60
Freight	FOB DMI, FL Service Center
Pallet Dimensions	40" x 48" x 47"
Net Free Area	18 Sq. in./Ln. ft.
Air Permeability	900 CFM

This product does not have any specific approval numbers please check with your local building department before ordering.

Shingle Ridge Vent Roll



The RidgeVentTM

20

Ridge Vent for Asphalt, Slate, and Cedar Shingle Roofs

Coil of nails included in every roll.

- 40 year limited warranty
- Fits any pitch 2:12– 20:12
- One person rollout installation on caps or panels
- Almost invisible from the curb
- No waste—use leftovers on next job
- Will not support a flame—Class A Fire Rating



- Made in USA
- Made from over 90% recycled fiber; over 30% post-consumer content

The RidgeVent 20' Roll Product & Freight Specifications

Item Description	20' L x 10½" W x ¾" H
Item#	DMI00034
Barcode Package	897481000342
Barcode Pallet	10897481000349
Lineal Ft per Package	20'
Package Weight	6 lbs.
Package Size	17" x 17" x 10½"
Items per package	1
Packages per Pallet	24
Lineal Ft per Pallet	480'
Pallet Weight	184 lbs.
Lineal Ft per 53' truckload	28,800'
Packages per 53' truckload	1,440
Pallets per 53' truckload	60
Freight	FOB DMI, FL Service Center
Pallet Dimensions	40" x 48" x 47"
Net Free Area	18.2 Sq. in./Ln. ft.
Air Permeability	922 CFM

This product does not have any specific approval numbers please check with your local building department before ordering.



Retrofit Residential MasterFlash

Electrical Mast Connection DMI Retrofit Residential MasterFlash PN DMIEMC101BS

Specifically designed for the Residential roofing Industry.

DMI Retrofit Residential Masterflash are compounded specifically for maximum resistance to weathering due to ozone and ultraviolet light.

The base is designed to mold to most configurations and roof pitches regardless of pipe location.

Easy to see pipe diameter markings make for an easy on-site installation.

Built in 20 deg pitch allows adaptability to almost any roof pitch including 45 deg.

No hassle stainless steel gripper to secure retrofit application.



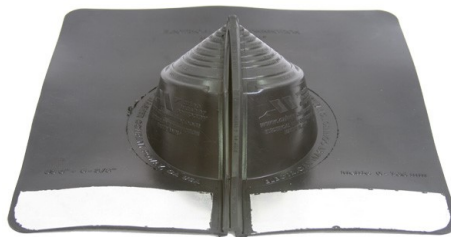
Limited 20 year weather-ability warranty.

Part# DMIEMC101BS

For Electrical Mast 0" - 5-3/8"
Top Opening closed
Cut to suit pipe size 0" - 5-3/4"
Base dimensions 15" x 15"

10 Pieces per carton.

Tested to continuous 212 deg F high temperature resistance.
Tested to -67 deg F low temperature resistance.
Advanced ozone resistance tested to 70 hours @ 500 pphm.



Florida Building Code Approved
Approval # FL 28400.1



100% Made in North America,
Buy American Plan compliant.

RETROFIT DEKTITE™ SHR FOR ELECTRICAL MAST

Dektite brand solution for EMC powerpole flashing on shingle roofs. Easy to see pipe diameter markings make for an easy on-site installation. Built in 20 deg pitch allows adaptability to almost any pitch including 45 deg angles. No hassle mini grippers to secure in retrofit applications. Tested to continuous 212 deg F and - 67 deg F. Not designed for use on metal roofing. Not for use in Florida or areas that require building code approvals. Made in Indonesia.

Fits	Base	Part#	Approvals
0" to 5-3/8"	15" x15"		NONE
10 Pieces per carton.			



ZIPSEAL FOR ELECTRICAL MAST

A popular solution for flashing electrical mast connections on shingle roofing. Made of Ethylene Propylene Diene Monomer (EPDM) with an expect life cycle of 20 years and capable of service temperatures of -58 deg F to 239 deg F. The base has integral galvanized mesh reinforcement to support nail heads. Easy to view pipe diameter markings make for an easy on-site installation. Suitable for roof pitches from 15 deg to 45 deg. Black stainless steel sealing grippers to provide a clean look in retrofit applications. Not designed for use on metal roofing. Made in China.

Fits	Part#	Approvals
0" to 5-3/8"	ZIPSEAL	NONE



RETROFIT GOLDENSEAL™ FOR ELECTRICAL MAST

A popular solution for flashing high pitch electrical mast connections on shingle roofing. Made of Ethylene Propylene Diene Monomer (EPDM) with an expect life cycle of 20 years and capable of service temperatures of -58 deg F to 239 deg F. The base has integral galvanized mesh reinforcement to support nail heads. Easy to view pipe diameter markings make for an easy on-site installation. Suitable for steeper roof pitches than 4/12 from 5/12 to 12/12. . Not designed for use on metal roofing. Made in China.

Fits	Base	Part#	Approvals
0" to 3-3/8"	15" x15"	GoldenSeal	NONE
15 Pieces per carton.			



#10 WOODZIP™ TP-17 Metal to Wood Screw

Designed for the installation of plastic and aluminum on ridge vent for shingle roofing and metal edge metal fastening. The WoodZip features a thick bonded E.P.D.M. washer for a positive seal against metal. The TP-17 slotted cut point helps to reduce penetration shavings while the 1/4" HWH drive provides a stable driving platform. Coated with DMG85 long life anticorrosion coating on the entire screw that meets and exceeds the 2017 Florida Building Code Version section R904.5.2 corrosion resistance requirements and carries a Miami-Dade County Fastener listing certification L 21-0630.02. Packaged in re-sealable plastic pails great for store shelf distribution with one driver included per pail.

Size	Qty/Pail	Pails/Carton	Part#
#10-16 x 1-1/2"	400/Pail	4	DMI4H150MP400
#10-16 x 2-1/2"	250/Pail	4	DMI4H250MP250
(1) 1/4 hex driver is included per pail			



#12 DIRECT*SEAL MP SCREW - MULTI-PURPOSE EDGE METAL FASTENERS

Designed for a multitude of applications including panel and fixture attachment to wood, masonry or light gauge metal substrates. The Direct*Seal MP is a popular choice for metal edge attachment. Features a 1/4" HWH head with with a bonded EPDM sealing washer the fasteners is zinc plated and is fully coated with the DMG85 silver protective barrier coating for a high level of corrosion resistance. Packaged in re-sealable plastic pails.

Applications include wood, metal deck, and masonry

Size	Qty/Pail	Pails/Carton	Part#
#12 x 3/4"	400/Pail	4	DMI3DSF12034DP1WT
#12 x 1-1/2"	300/Pail	4	DMI3DSF12150DP1WT
#12 x 2-1/4"	150/Pail	4	DMI3DSF12214DP1WT
#12 x 3-3/4"	700/Pail	1	DMI3DSF12334DP1WT
#12 x 4-1/2"	600/Pail	1	DMI3DSF12412DP1WT
#12 x 5"	600/Pail	1	DMI3DSF12500DP1WT
#12 x 6"	300/Pail	1	DMI3DSF12600DP1WT
#12 x 8"	300/Pail	1	DMI3DSF12800DP1WT





Distributor order entry or product inquiries:
Toll Free Phone: 855-800-8878
Toll Free Fax: 855-800-8877
orders@directmetalsinc.com
Website: www.directmetalsinc.com

Direct Metals, Inc. has worked diligently to set up a distribution network including over 1500 wholesale roofing supply locations, building products distributors, and OEM Manufacturers. As DMI is not set up for one time purchases or direct to market sales to building owners, builders, contractors, installers or end users we rely on this network to bring our products to market. Direct Metals, Inc. sells materials directly to our registered distributor network. We do not offer direct sales however we can assist you in finding the right product and your closest distributor.



Corporate Office
Direct Metals, Inc.
Ft Myers, FL 33905
Phone: 855-800-8878

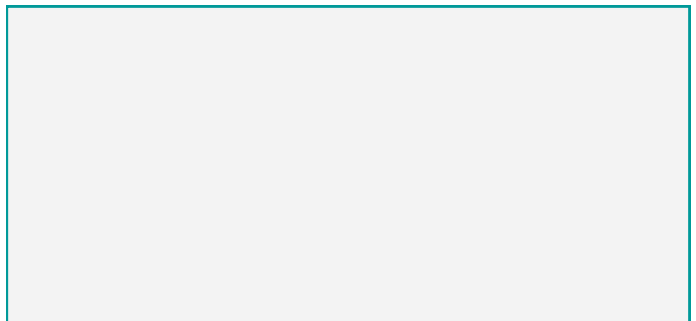
S.E. Service Center
1719 Baseline Ct.
Ft Myers, FL 33905
Phone: 239-599-8527
Fax: 239-599-8545
Inquiries: orders@directmetalsinc.com

Midwest Service Center:
Direct Metals of Indiana
1800 Jim Neu Drive, Suite 3
Plymouth, IN 46563
Phone: 574-935-3644
Fax: 574-935-3643
inquiries: orders@directmetalsinc.com

Where do I buy?

To find a distributor of the products in this catalog please call 239-599-8527 or email orders@directmetalsinc.com with the Subject help me find a distributor of your DMI residential products and an associate will be happy to assist you.

Your stocking distributor is :



www.directmetalsinc.com