

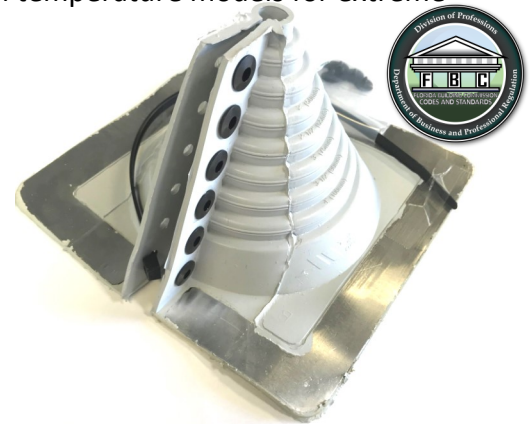
Retrofit Flashings for Metal Roofing Electrical Masts (EMC)



Designed to waterproof electrical mast connections or collared pipe penetrations through metal roof panels

Retrofit - split flashing designed with sleeve flexibility to absorb vibration and pipe movement caused by expansion/contraction while sealing out unwanted elements. Easy on-site customization can accommodate virtually all installations. Available in standard EPDM and silicone high temperature models for extreme temperature applications.

- Superior sleeve flexibility and vibration resistant.
- Adaptable base designed to mold to most panel configurations and roof pitch regardless of mast or pipe location.
- Aluminum base ring for easy molding and fastener stability.
- 20 Year limited warranty and superior weatherability.
- UPC Code approval, IAMPO & CSA listing.
- Florida Building Code approval FL 28400.3
- Easy to read size cut markings.



Specifications

Performance Temperature Range

Standard EPDM Flashings -65 deg F to 212 deg F

High Temp Silicone Flashings -100 deg F to 437 deg F

Adv Ozone Resistance Testing: 70 hr @ 500pphm

Design Uplift Pressure = -300 PSF (28 fasteners)

Florida Building Code Approved :

#101 (#1) Retrofit Masterflash

Approval # FL 28400.3



100% Made in North America,



Buy American Plan Compliant.

Selection

GRAY EPDM Silicone HT

Size Fits Pipes	Base	Qty/Box	Part#	Part#
#101 0.50"- 4"	8.19"	5	DML101G	DML102H
#201 4"- 9.25"	14.25"	5	DML201G	DML202H
#301 9.25"- 16.25"	21.50"	5	DML301G	DML302H

Colors available in #101 size of EPDM

Gray or Black

Colors available in #101 size of Silicone High Temp

Red

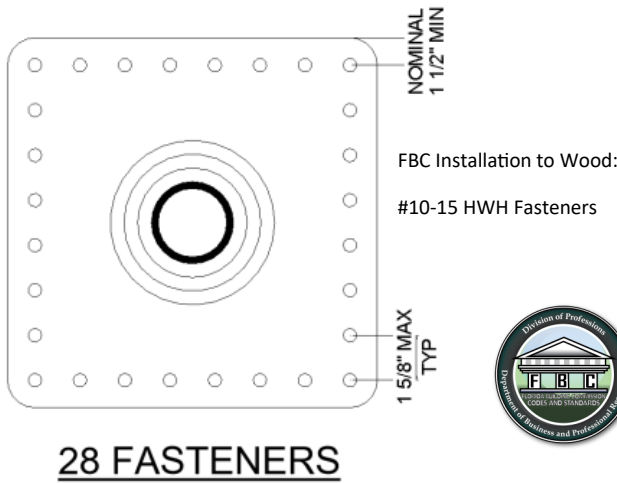
Installation

See reverse of this page

MSDS: Based on current requirements of the occupational safety and health administration code, 26CFR, part 19101200 (Hazard communication), it has been determined that our pipe flashing products are considered "articles". A material safety data sheet is not required for items meeting the code definition of "article".

To find a distributor of DMI products please visit www.directmetalsinc.com or call 855-800-8878

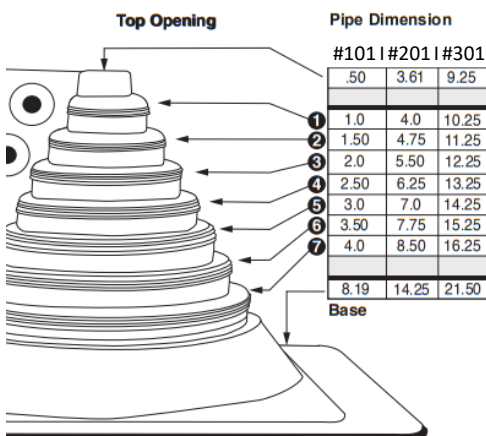
Installation Guide Retrofit Flashings Square Base #101



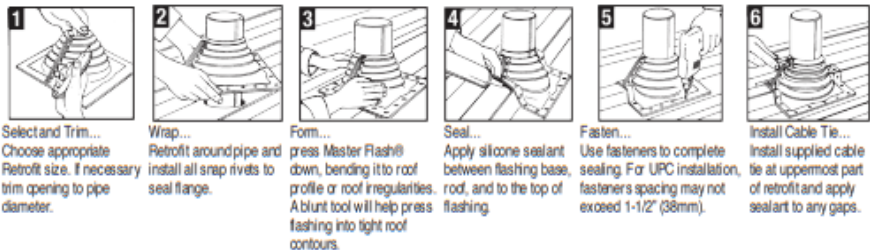
Suggested Installation Accessories

- | | |
|-------------------------------------|------------------|
| Fasteners to Wood Substrate | <u>Part#</u> |
| #10-15 x 1-1/2" WoodZIP SCAMP SSC | DMI4SSC150M |
| #10-15 x 2" WoodZIP SCAMP SSC | DMI4SSC200M |
| Fasteners to Steel Substrate | <u>Part#</u> |
| #12 x 1-1/4" SteelZIP SCAMP SD3 SSC | DMI4SSCSD3125M |
| Fasteners to Sheet Metal Panel Only | <u>Part#</u> |
| #14 x 7/8" SteelZIP SCAMP SD1 SSC | DMI4SSCSD114078M |
| Sealant for under base | <u>Part#</u> |
| 7108 Permathane 300 ML Tubes Gray | DMISM7108G |
| DMI Butyl*Roll Butyl Tape 3/4" | DMBT3323445 |

- Find pipe size in the table below and trim flashing as shown
- Use one size larger flashing on steep roof or deep corrugations



Retrofit Master Flash® Square Base



MSDS: Based on current requirements of the occupational safety and health administration code, 26CFR, part 19101200 (Hazard communication), it has been determined that our pipe flashing products are considered "articles". A material safety data sheet is not required for items meeting the code definition of "article".

To find a distributor of DMI products please visit www.directmetalsinc.com or call 855-800-8878