

DMI PIPE FLASHINGS for Metal Roofing Pipe Penetrations

Used to waterproof roof penetrations in metal roofing panels. Feature aluminum fastening ring with grooved sealant holding base. All of these flashings have UPC approval, IAMPO & CSA listings and a 20 year warranty. EPDM standard flashings have a temperature range up to constant 212 deg F. The new grey silicone high temperature flashings can temperature spikes of up to 500 deg F.

Now available in panel match colors in #3 round, Bright Red, Cocoa Brown, Gloss Black, Forest Green, Gallery Blue, Light Green, Charcoal/Dark Gray, Light Blue, Terracotta, Tan, White and Copper.



Size	Fits Pipes	Base	Qty/Box	Standard Gray or Black Part#	High Temp Gray Part#
#1	1/4" - 2"	4-1/2"	15	DML1GR /BR	DML1HTG
#2	1 1/4" - 3"	6"	15	DML2GR /BR	DML2HTG
#3	1 1/4" - 4"	8"	15	DML3GR /BR	DML3HTG
#4	3" - 6"	10"	10	DML4GR /BR	DML4HTG
#5	4" - 7"	11"	10	DML5GR /BR	DML5HTG
#6	5" - 9"	12"	10	DML6GR /BR	DML6HTG
#7	6" - 11"	14"	10	DML7GR /BR	DML7HTG
#8	7" - 13"	17"	5	DML8GR /BR	DML8HTG
#9	10" - 18"	25-3/8"	5	DML9GR /BR	DML9HTG
#10	13" to 26"	34" square	5	DML10GS	DML10HTGS

EPDM (Standard) pipe flashing temp range : -65 to 212 deg F Constant

SILICONE (High Temperature)
pipe flashing temp range : -100 to 437 deg F Constant, Spikes to 500F

Buy American Plan of 50%+ American Made Content
100% North American Made.

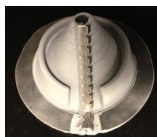
RETROFIT FLASHINGS - for Metal Roofing E.M.C.

Designed to water proof electrical conduit, masts, service poles and collared pipe penetrations through metal roofing panels. with UPC approval and 20 year warranty. Standard gray to be used on mill finish metal roofing, also available in black. Buy American Plan/100% N. American.

Square base feature corrosion resistant band and rivets for fastening. Standard are available in gray or black, high temp in red.



Round base (Zipperboot) feature stainless steel fastening teeth and aluminum fastening ring with grooved sealant holding base. Standard are gray and high temp are white.



Square Base				Standard	High Temp
Size	Fits	Base	Qty/Box	Part#	Part#
#101	1/2"- 4"	8"	5	DML101G	DML102H RD
#201	4"- 9-1/4"		5	DML201G	DML202H RD
#301	9-1/4"- 16-1/4"		5	DML301G	DML302H RD

Round Base				Standard	High Temp
<u>Size</u>	<u>Fits</u>	<u>Base</u>	<u>Qty/Box</u>	<u>Part#GR</u>	<u>Part#</u>
*#1	1/4"- 2-3/4"	6-3/10"	10	DM801G	
*#2	2"- 7-1/4"	10-3/4"	10	DM802G	DM802W WT
*#3	3-1/4"- 10"	14-1/2"	5	DM803G	

EPDM (Standard) pipe flashing temp range : -65 to 212 deg F Constant

SILICONE (High Temperature)
pipe flashing temp range : -100 to 437 deg F Constant, Spikes to 500F

MULTI-FLASH SQUARE VENT, SQUARE PIPE BOOT

Fits standard square pipes and vents from 3/4" to 5" and retrofit applications for 1-1/2" up to 4". High quality black EPDM with 20 year warranty. Adaptable base and no hassle stainless steel gripper and plastic zip tie to secure in retrofit applications. Packaged 10 pcs/box B.A.P "square base. Part# DMLMFSQ101BA & MFSQ101BA



35YEAR PREMIUM ICC LISTED METAL ROOFING PIPE FLASHING

Made of EPDM and available in full black square base only. High level of Ozone and UV protection. ICC-ES listed. Intermittent temperature tested from -65 deg F to 275 deg F

#2 fits 1-1/4" to 3"	Part# DMLICCSQ201B
#3 fits 1/4" to 4"	Part# DMLICCSQ301B
#5 fits 4" to 8"	Part# DMLICCSQ501B
#8 fits 7" to 13"	Part# DMLICCSQ801B

Gray Square STD also available in square base style.



ANGLE FLASHINGS

Designed for use on extreme pitch metal roofs. Built in 40 degree angle to make installation on extreme pitch roofs quick and easy. Manufactured in a Gray or Black E.P.D.M. with a temperature range up to constant 212 deg F. Fits pipe sizes 1/4" - 6" Packaged 10 pieces per box. BAP
Gray Part # DMLEA101GY-SQ201GY
Black Part # DMLEA101BA-SQ201BA



MASTERCAP, RIBCAP & DEK-CAP

Designed to seal up-slope profile ends. On Applications such as HVAC, Skylight, and Cupolas. The MASTERCAP will accommodate many standing seam profiles and R/PBR profile. THE RIBCAP is designed specifically for 3/4" rib profile ends.

MASTERCAP Part# DMLMC051/MC101NG
RIBCAP Part# DMRIBCAP BAP
DEK-CAP™ Part# DM1DC1/4146910 Imported



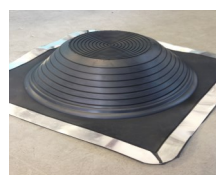
LIGHTNING ROD PIPE FLASHING

Designed to weatherproof lightning rod or wire penetrations through metal roofing panels or ridge caps. Easy to use, with the perfect low profile design. Also used in some solar stand applications on metal roofing. Packaged 40 pieces per box. Imported. Fits 0" to 1-3/8" Part# DM1RRG



FIX-A-FLASH MASTERFLASH

Solution for smaller pies with an oversized hole in your metal panel, and solution for overflash application of old pipe flashings. EPDM black 20 warranty rubber and adaptable base. Fits 0" to 15" pipes with a 19-1/2" base. Buy American Plan. 5 pcs per box Part# FF851BC





THE BULLET BOOT - Pipe Flashing and Guard all in one for shingle roofing

TPO flexible pipe boot with built in pipe cover and flashing. 100% UV protected with 35 year warranty. Non toxic (no lead) for shingle roofing. Comes with pest screen and covers pipe inside and out. 1-1/2", 2" and 3" are packaged 16 per box, 4" are packaged 8 per box. 5 Colors available to match popular shingle colors white, brown, gray, weatherwood and black.

- 35 Year Warranty
- Easy Installation
- Low Cost
- 1-1/2", 2", 3" and 4" Sizes



RESIDENTIAL MASTERFLASH™ Pipe Flashings for Shingle or Tile Roofing

Think of this product as a competitor to 3 in one pipe flashings with a high quality North American twist. Black E.P.D.M. pipe flashing attached to a large aluminum base with easy fit pull size tabs. Designed to help waterproof pipe penetrations through asphalt shingle, tile, and shake roofing. Durable 20 year E.P.D.M with corrosion resistant aluminum base helps ensure long life performance. Aluminum base is easily malleable and conforms to many shapes. Mini and #1 have 14" x 14" aluminum base. 100% Made in N. American, over 50% U.S.A content B.A.P.

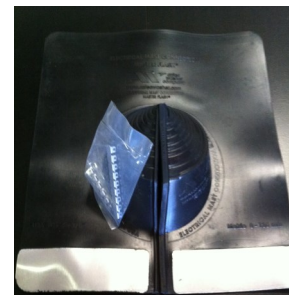
Available Sizes	Box Qty	Part#
Mini 1/4" - 3"	10	DMLRA0MBA
#1 3" - 8"	10	DMLRA1MBA
#2 8" - 11"	5	DMLRA2MBA
#3 11" - 18"	5	DMLRA3MBA



RETRO-FIT RESIDENTIAL MASTERFLASH™ Electrical Mast Flashing for Shingle

The solution for flashing electrical mast connections on shingle roofing. Specifically designed for the residential roofing industry, compounded for maximum resistance to weathering due to ozone and ultraviolet light. The base is designed to mold to most configurations and roof pitches regardless of pipe location. Easy to see pipe diameter markings make for an easy on-site installation. Built in 20 deg pitch allows adaptability to almost any pitch including 45 deg angles. No hassle stainless steel grippers to secure in retrofit applications. Tested to continuous 212 deg F and - 67 deg F. 100% Made in N. American, over 50% U.S.A content B.A.P.

Available Sizes	Base	Part#	Quantity per box
0" to 5-3/8"	15" x 15"	DMLEMC101BS	10



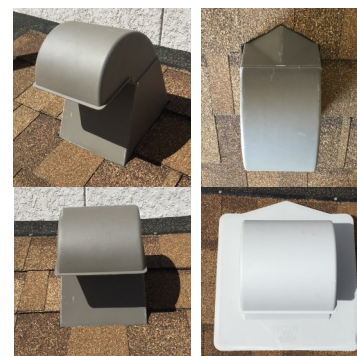
BULLET GOOSENECK VENT For Kitchen or Dryer Ventilation

Gooseneck Vent with a built in cricket, debris screen and rain damper. Heavy duty polypropylene carbonate construction. 35 year warranty, Made in U.S.A. Painting not required

8" in White, Brown, Gray, Black, Weatherwood.
10" in White, Brown, Gray, Black, Weatherwood.
9" in Terracotta, Tan, Gray, Weatherwood.
9" is extra (12.5") tall for tile roofing installations.

Features & Benefits:

- Fast Installation, no painting needed, colored throughout
- 100% UV protected HD Polypropylene carbonate material
- Will not crack in hot or cold installations.
- Very affordable with a 35 year manufacturers warranty
- Built in cricket for enhanced water flow-around
- Made in the U.S.A.



ROOF VENT BOOT GUARD, Lead boot cover for squirrel and rodent protection

Permanently Stops Squirrel And Rodent Damage. One Piece Molded Guard With UV Protected Color Throughout. Extra thick sturdy design expected to last for the life of your roof. Improves appearance of roofing system. Removable to allow plumber access. Available in two sizes covering all residential roof penetrations. Installs in minutes, no special tools needed just Phillips #3 screw driver. Made in the U.S.A.

Small (25 pcs/case) size for 1-1/2" to 2" vent stacks.

Large (16 pcs/case) size for 2" to 3" vent stacks.

Available in Gray (GY), White (WT), Brown (BN), and Black (BL).

