



STANDING SEAM PANEL ACCESSORIES May 1, 2022



Solutions for:
Architectural Standing Seam

2022 Spring
Update Edition



Toll Free Phone: 855-800-8878
Toll Free Fax: 855-800-8877
www.directmetalsinc.com

How can DMI help you?

Increase Ordering Efficiency:

DMI can offer the efficiency of many different accessory products from fasteners to pipe flashings, insulation to skylights, that can be shipped together. The efficiency of one shipment, one purchase order, and one customer service contact results in: lower costs, less paperwork, and less mistakes.

Decreasing Lead Times:

DMI can offer next day shipping on most of our in-stock products to registered distributors. This allows distributors to carry lower stocking levels that can be replenished in a days notice instead of the cost of carrying months of inventory.

Access to Product Specialists:

Not all manufacturers and distributors are the same. DMI invests in having qualified professionals available to answer technical and marketing questions. We offer training seminars, custom literature and other tools to help educate your sales team.

2022 Sales Policies and Conditions:

Direct Metals, Inc. has worked diligently to set up a distribution network including wholesale roofing supply locations, building products distributors, and OEM Manufacturers. As DMI is not set up for one time purchases or direct to market sales to building owners, builders, contractors, installers or end users we rely on this network to bring our products to market. Direct Metals, Inc. sells materials directly to our registered distributor network. We do not offer direct sales however we can assist you in finding the right product and your closest distributor.

If your company would like to apply to become a new registered DMI distributor, here are guidelines to see if you may qualify to join our distributor network. Registered dealers must offer products for resale and not intercompany use.

Registered dealers must maintain and provide a copy of a Tax exempt resellers license. Registered dealers must maintain a minimum stock of DMI products. Registered dealers must purchase an average minimum of \$ 5,000.00 / month. Registered dealers must have a strong financial background and be able to have credit approved by DMI.

Dealer applicants should be a minimum of 15 miles from any existing DMI dealer.

If your company does not meet all of the above criteria, DMI can assist you in creating a strong relationship with one of our very competitive distributors.

Return Policy:

All DMI distributors have the right to set their own policies with their customers including but not limited to: return, re-stock, pricing and terms of sale.

*DMI policy to our distributors is that all sales are considered final (**ALL SALES FINAL**). If DMI management will accept a return, it must be a standard stock product returned in original un-opened packaging, with a non-negotiable restocking fee. Any painted or special order product sales are final, no returns. Prior approval from Direct Metals, Inc management is required for any and all returns. No returns on sales older than **45 days**, regardless of circumstance. **Re-stocking fee is 25%** of the invoice amount, in addition to all shipping costs to send original shipment and return product to a Direct Metals, Inc service center. All credits for qualifying returns will be given in the form of an account credit against new purchases. **No cash refunds available***

Shipping Policy:

Response Times and Next Day Shipping Cutoff Time:

DMI Florida, DMI Indiana, DMI NY service centers cutoff for next day shipping on in-stock products is **11:00 AM EST for LTL** pallet shipments and **1:00 PM EST for UPS** parcel service shipments.

Shipping lead times do vary based on in house order volume. Texas, Pennsylvania, Illinois, Georgia and Iowa partner warehouses may have extended lead times. Painted items allow 3-35 days to ship.

The above shipping times are estimated and not guaranteed and apply to in-stock finished material at time of order. Materials that have to be painted, washed, packaged or manufactured will take additional lead time. Polycarbonate Panels require 2 days for packaging.

Information Policy:

DMI works to maintain to the best of our abilities correct and current information in our catalogs and on our websites. However data and information on our products and services can quickly become out of date without prior warning. Part numbers and box labels may change or vary from this catalog or DMI websites. The information presented is from sources believed to be reliable but no warranty (expressed or implied) is made regarding accuracy, adequacy, completeness, legality, reliability or usefulness of any of the information contained within this catalog or DMI websites.

LOW PROFILE HEAD FASTENERS FOR ATTACHMENT TO WOOD & MORE

PANCLIP - for applications that require a low profile head with large flat under head load bearing surface. The Panclip head combines a larger clamping surface than a PFH fastener and a lower profile than a HWH or hex head fastener. Designed primarily for the installation of standing seam metal roofing panel clips. The Panclip has many other applications such as window, door, fixture, liner panel, cladding and siding panel installations. Panclip fasteners are now available for wood (MTW), steel (MTM) or wood to metal (WTM) applications.

#10 PANCLIP MTW - 1000 HR COATED

DMI's "standard" fastener for low profile fastening applications to wood substrates. This engineered multi-purpose fastener is a carbon steel fastener with E zinc galvanizing and DMG85 corrosion resistant coating. This fastener meets exceeds the ASTM G85 Miami-Dade corrosion resistance requirement and the Silver parts have a Miami-Dade fastener listing L 21-0630.02. This fastener also meets the Florida Building Code, 2017 FBC R904.5.2, 2014 1505.5 1000 hr ASTM B-1117 requirements. All Panclip MTW screws feature #2 square drive and a TP-17 point and are packaged 250 pcs per bag.



Available Sizes	Qty/Box	Part# 1000hr
#10 x 1"	TP17 5,000	DMIPD10100T
#10 x 1-1/2"	TP17 2,500	DMIPD10150T
#10 x 2"	TP17 2,000	DMIPD10200T
#10 x 2-1/2"	TP17 2,000	DMIPD10250T

MIAMI-DADE COUNTY
LISTED

L 21-0630.02

WHITE/BRIGHT WHITE COATED

Available Sizes	Qty/Box	Part# 1000hr
#10 x 3"	TP17 1,500	DMIPD10300WT

PANCLIP SP MTW - 1000 HR COATED

Panclip fastener designed for clip installation into dimensional lumber wood substrates. Full Silver DMG85 coating and sharp point. Meets FBC 1506.6 and Miami Dade requirements. Available in older 11 TPI and 13 TPI design thread patterns specified in some approved systems more specifically suitable for dimensional lumber substrates. Packaged 250 pcs / bag



Available Sizes	Qty/Box	Part#
#10-13 x 1-1/4" R2	3,500	DMIPDX10114BA
#12-11x 3/4" SP	5,000	DMIPD123411T
#12-11x 1" SP	5,000	DMIPD121011T
#12-11x 2" SP	2,000	DMIPD122011T

MIAMI-DADE COUNTY
LISTED

#10 L 21-0630.01
#12 L 21-0630.05

PANCLIP ECONO - MTW

Panclip MTW fastener at a lower cost with the same specifications and design as the above Panclip screws without the DMG85 Miami-Dade Listing or coating. These parts come without the additional corrosion resistant coatings and are not for use in Florida.. Packaged 250 pcs / bag.



Available Sizes	Qty/Box	Part#
#10-9 x 1" TP-17	5,000	DMIPE1010ZTS
#10-9 x 1-1/2" TP-17	2,500	DMIPE1015ZTS

PANCLIP-SD-L LONG LENGTH PANCAKE

#14-13 Panclip fastener designed for clip installation through insulation into wood, light gauge metal up to 16 ga. or masonry substrates (with 3/16" pre-drill). Also popular for insulation plate, nailboard, or ISP installation. Carbon steel with corrosion resistant 1000 hr DMG85 black coating exceeds ASTM B117 and FBC 1506.6 standards. Now available in 100/box shelf friendly boxes or bulk packaged cartons.



PANCLIP SD-L COATED BLACK B=BULK

Available Sizes	Qty/Box	Part#
#14 x 1-1/2"	2,500	DMIPL1415D
#14 x 1-1/2"	100/2,400	DMIPL1415D100
#14 x 2"	100/2,400	DMIPL1420D100
#14 x 3"	1,000	DMIPL1430D
#14 x 3"	100/1,600	DMIPL1430D100
#14 x 4"	1,000 B	DMIPL1440D
#14 x 4"	100/1,600	DMIPL1440D100
#14 x 5"	1,000 B	DMIPL1450D
#14 x 5"	100/1,200	DMIPL1450D100
#14 x 6"	1,000 B	DMIPL1460D
#14 x 6"	100/1,200	DMIPL1460D100
#14 x 7"	1,000 B	DMIPL1470D
#14 x 8"	500 B	DMIPL1480D
#14 x 10"	100/300	DMIPL14100D100
#14 x 12"	100/200	DMIPL14120D100

MIAMI-DADE COUNTY
LISTED

#14 x 1-1/2" , 2"
L 21-0630.03

Substrate	Pull out
1" x 4" Pine	995 lbs
22 ga Steel	575 lbs
4000 PSI Concrete	675 lbs

PAN*CON SS - MASONRY OR WOOD

410 Stainless Steel Panclip fastener designed for installation into predrilled masonry/concrete or wood. DMG85 Silver corrosion resistant coating exceeds ASTM B117 and FBC 1506.6 standards. SQ2 drive. Packaged in 100 piece boxes with a drill bit included. Popular for termination bar, Dura-clad and standing seam attachment to masonry.



Pan*Con 410 SS C Point SQ2 Drive

Available Sizes	Qty/Case	Part#
#14 x 1-1/2" SQ2	1,700	DMIPC41415T
#14 x 2-3/4" SQ2	1,600	DMIPC414275T
#14 x 4" SQ2	1,200	SPECIAL ORDER
#14 x 6" SQ2	1,000	DMIPC414600T

MIAMI-DADE COUNTY
LISTED

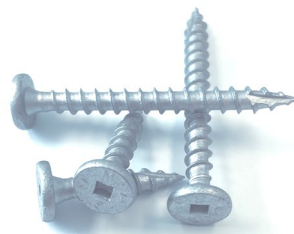
L 19-0216.03

STAINLESS STEEL PANCAKE & XLP PANCLIP FASTENERS

PANCLIPSS MTW - 300 STAINLESS STEEL

#10-9 PanclipSS with low profile pancake head for installing standing seam panels, concealed panel clips, windows or fixtures into wood substrates. Ideal for coastal applications or when a high level of corrosion resistance is required. Corrosion resistance exceeds ASTM B117 and G85 standards. Miami-Dade Listing# L20-0309.02. The PanclipSS has a full DMG85 silver coating to help resist dissimilar metal reactions and has a low profile SQ2 drive head with TP-17 point. Standard is 304SS #10 x 1-1/2" & #12 x 1-1/2" now available in 316SS. Packaged 250 pcs / bag.

MIAMI-DADE COUNTY
LISTED



304 SS, #2SQ, TP-17 Low Profile Miami-Dade L20-0309.02

Available Sizes	Qty/Box	Part#
#10 x 1" TP17	5,000	DMIP31010D
#10 x 1-1/2" TP17	2,500	DMIP31015D
#10 x 2" TP17	2,000	DMIP31020D

304 SS Sharp Point, Not MDL, SQ2

Available Sizes	Qty/Box	Part#
#12-11 x 3/4" A	5,000	DMIP31234D
#14-14 x 3/4" AB	4,000	DMIP31434SDCAB
#14-14 x 1" AB	3,000	DMIP31410SDCAB

316 Stainless Steel, Not MDL, SQ2

Available Sizes	Qty/Box	Part#
#10 x 1-1/2" TP17	2,500	DMIP3161015D
#12-11 x 1-1/2" SP	2,500	DMIP3161215D

PANCLIP-SD-SS-L STAINLESS STEEL

#14-13 Stainless Steel Panclip fastener designed for clip installation through insulation into wood or light gauge metal up to 18 ga. Also popular for insulated panel, bearing plate or nailboard attachment to metal deck. 410 Stainless steel base material with DMG85 Silver corrosion resistant coating exceeds ASTM B117 and FBC 1506.6 standards. SQ2 drive, bulk packaged.



PANCLIP SD-SS-L 410SS DMG85 SILVER

Available Sizes	Qty/Box	Part#
#14 x 1-1/2"	2,500	DMIP41415D
#14 x 3"	1,000	DMIP41430D
#14 x 5"	500	DMIP41450D
#14 x 7"	500	DMIP41470D
#14 x 10"	500	DMIP414100D

PANCLIP XLP - The XLP is for applications that demand an extra low profile head that almost sits flush with the sheet metal that it is securing. Designed primarily for the installation of nail-strip / nail-fin standing seam metal roofing panels. The XLP can be used in many other applications that require an extra low profile installed finish with more holding or bearing surface than a PFH flat head fastener can provide.

PANCLIP XLP MTW NAILSTRIP FASTENER

With extra low profile pancake wafer head for installing nail strip style standing seam panels into wood substrates. XLP MTW comes standard with DMG85 Silver corrosion resistant coating designed to exceed Florida Building Code and Miami-Dade County requirements. The XLP's larger #12-8 diameter provides superior holding strength vs. competing #10 fasteners into wood substrates. The XLP has a sharp point and #2 Square drive for ease of installation. Packaged 250 pcs / bag.



XLP MTW 1000HR DMG85, SQ2, SP, Dade Listed

Available Sizes	Qty/Box	Part#
#12-8 x 1"	5,000	DMIPXLP121SD
#12-8 x 1-1/2"	2,500	DMIPXLP1215SD

Coming in 2022	Qty/Box	Part#
#12-8 x 2-1/2"	1,500	DMIPXLP1225SD

MIAMI-DADE COUNTY
LISTED

L 21-0630.04

PANCLIP XLP SS STAINLESS STEEL NAILSTRIP FASTENER

The XLP SS is made of passivated 304 Stainless Steel for corrosion protection. The XLP head is made as low profile as possible to provide a pleasing installed appearance. The XLP has a sharp point and #2 Square drive for ease of installation. Packaged 250 pcs / bag.



XLP SS MTW 304 Stainless Steel, SQ2, SP

Available Sizes	Qty/Box	Part#
#12-8 x 1" 304SS	5,000	DMIPXLP121SS
#12-8 x 1-1/2" 304SS	2,500	DMIPXLP1215SS

Coming in 2022	Qty/Box	Part#
#12-8 x 2-1/2" 304SS	1,500	DMIPXLP1225SS

PANCLIP XLP ECONO NAILSTRIP FASTENER

The #10-13 XLP is carbon steel and zinc plated with an additional DMG85 Blue Coating to meet Florida Building Code fastener corrosion resistance standards. The #10-13 XLP SS Econo is made of passivated 304 Stainless Steel with a DMG85 silver barrier coating for corrosion protection and protection against dissimilar metal reactions. The XLP head is made as low profile as possible to provide a pleasing installed appearance. The XLP has a sharp point and #2 Square drive for ease of installation. Packaged 250 pcs / bag.



XLP Econo Blue DMG85, SQ2, SP

Available Sizes	Qty/Box	Part#
#10-13 x 1-1/8"	3,500	DMIPXLP10118BA
#10-13 x 2"	2,000	DMIPXLP10200BA

XLP SS ECONO 304 Stainless Steel, SQ2, SP

Available Sizes	Qty/Box	Part#
#10-13 x 1-1/8"	3,500	DMIPXLP10118SS

Coming in 2022	Qty/Box	Part#
#8-8 x 2"	2,000	DMIPXLP8200SS
#8-8 x 2-1/2"	1,500	DMIPXLP8250SS

LOW PROFILE HEAD SELF DRILLING FASTENERS

PANCLIP-SD for applications that require a low profile head with large flat under head load bearing surface. The Panclip head combines a larger clamping surface than a PFH fastener and a lower profile than a HWH or hex head fastener. Designed primarily for the installation of standing seam metal roofing panel clips and commercial roofing stress and seam plates. The Panclip also has many other applications such as window, door, fixture, liner panel, cladding and siding panel installations. Panclip SD-L fasteners are for wood, masonry or light gauge metal applications.

PANCLIP-SD-L SELF DRILLING MTM

Light gauge applications up to 16 ga

#14-13 Panclip fastener designed for panel clip, stress plate, nailbase and fixture attachment to metal decking from 22 ga to 16 ga in thickness. The truss style thread is also suitable for installations into wood and also masonry and concrete with a 3/16" predrill. The Panclip SD-L features the DMG85 black coating that meets FBC and MDC corrosion resistance requirements. Panclip SD-L has a #2 square drive and precision drill point. Bulk packaged.



L 21-0630.03
(DMIPL1415D, DMIPL1420D100)

PANCLIP SD-L COATED BLACK B=BULK

Available Sizes	Qty/Box	Part#
#14 x 1-1/2"	2,500	DMIPL1415D
#14 x 2"	100/2,400	DMIPL1420D100
#14 x 3"	1,000	DMIPL1430D
#14 x 4"	1,000 B	DMIPL1440D
#14 x 5"	1,000 B	DMIPL1450D
#14 x 6"	1,000 B	DMIPL1460D
#14 x 7"	1,000 B	DMIPL1470D
#14 x 8"	500 B	DMIPL1480D
#14 x 10"	100/300	DMIPL14100D100
#14 x 12"	100/200	DMIPL14120D100

Multi-Purpose for Metal Deck, Wood, or Masonry Concrete Substrates

PANCLIP-SD SELF DRILLING MTM

Medium gauge applications .036"-.210"

Panclip low profile pancake head mated to a self drilling drill point for drill and tap performance into metal and steel substrates. SD2 and SD3 point fasteners are designed to self drill and tap into metal substrates from 22ga up to 8 ga steel.

PANCLIP-SD features the 1000hr DMG85 silver coating to meet FBC1506.6 and other corrosion resistance requirements. Packaged in 250 count bags.



PANCLIP SD - DMI SILVER COATED P2/S2

Available Sizes	Qty/Box	Part#	1000hr
#10-16 x 1" SD2	5,000	DMIPD210100C	
#10-16 x 1-1/2" SD2	2,500	DMIPD210150C	
#12-14 x 1" SD3	5,000	DMIPD312100C	
#12-14 x 2" SD3	2,000	DMIPD312200C	
1/4-14 x 1-1/4" SD3	3,500	DMIPD314125C	
1/4-14 x 4" SD3	1,000	DMIPD314400C	
1/4-14 x 6" SD3	1,000	DMIPD314600C	
1/4-14 x 8" SD3	500	DMIPD314800C	

PANCLIP-SD HD #14 SELF DRILLING MTM

Heavy gauge/purlin applications .12"-.250"

Panclip low profile pancake head designed for installing panel clips, fixtures and stress plates into steel substrates. PANCLIP-SD HD features a SD4 heavy drill point and square drive #3 for driving stability. Fully coated with DMG85 FBC 1506.6/MDC Coating.



PANCLIP SD4 HD - DMI SILVER COATED SQ3

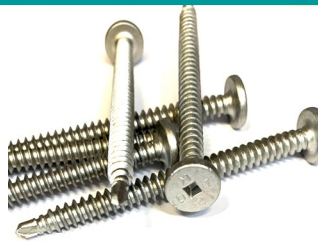
Available Sizes	Qty/Box	Part#	1000hr
1/4-20 x 1-1/2" SD4	2,500	DMIP414150TC	
1/4-20 x 3" SD4	1,500	DMIP414300TC	
1/4-20 x 5" SD4	1,000	DMIP414500TC	
1/4-20 x 7" SD4	500	DMIP414700TC	

SD4 point fasteners are designed to self drill and tap into metal substrates from 12ga up to 1/4" thick steel beams.

PANCLIP-SD-SS-L STAINLESS STEEL MTM

Light gauge applications up to 18 ga

#14-13 Stainless Steel fastener designed for clip, stress plate, nailbase and fixture attachment to metal decking from 22ga to 18ga in thickness. The Silver DMG85 coating provides a high level of corrosion & dissimilar metal reaction resistance. Panclip SD-SS-L comes bulk packaged and has a #2 square drive. DMG85 coated 410 Stainless steel exceeds 1506.6 & MDC standards.



PANCLIP SD-SS-L 410SS CTD BULK

Available Sizes	Qty/Box	Part#
#14 x 1-1/2"	2,500	DMIP41415D
#14 x 3"	1,000	DMIP41430D
#14 x 5"	500	DMIP41450D
#14 x 7"	500	DMIP41470D
#14 x 10"	500	DMIP414100D

Multi-Purpose for Metal Deck, Wood, or Masonry Concrete Substrates

PANCLIP-SDSS 410 STAINLESS STEEL MTM

Medium gauge applications .036"-.210"

Panclip low profile pancake head with full 410 stainless steel construction and the DMG85 silver coating for resistance to dissimilar metal reaction and corrosion. Designed for clips and fixtures attachment to medium gauge steel substrates. #2 Square Drive. Packaged 250 pcs / bag.



PANCLIP SD-SS 410SS CTD SQ2 250/BAG

Available Sizes	Qty/Box	Part#
#10-16 x 3/4" SD3	5,000	DMIP41075DC
#10-16 x 1" SD3	5,000	DMIP41010DC
#12-14 x 2" SD3	2,000	DMIP41220DC

MIAMI-DADE COUNTY
LISTED

L 20-0309.01

DMI SNAPLOCK PANEL CLIPS

Designed for secure fastening of snap lock style standing seam/concealed fastener metal roofing systems. Most styles available in G-90 galvanized or stainless steel. Panel clips can be manufactured to fit panels from most brands and styles of roll forming machines. Please specify make and model of machine when ordering. Most styles are designed with built in fastener relief to help eliminate panel dimpling. (Full Box Orders Only)



1-3/4" Snaplock Ultra Length HD

For 1-3/4" Snaplock Panels multiple versions to fit Quadro, RF, Newtech 675, D175S Knudson & ES2000, US 175
18 ga steel or SS, 2 hole, 3-1/2" width.

Gauge	Qty/Box	Part#	Height
18G Galv	250	CSN134312G18	1.875"
18G Galv	250	CSN134312G18V-3	1.88"
18G Galv	250	CSN134312G18VMOD	1.88"
18G SS	250	CSN134312S18	1.875"
18G SS	250	CSN134312S18V-3	1.88"
18G SS	250	CSN134312S18VMOD	1.88"



1-1/2" Snaplock Ultra Length QSL HD

Fits 1-1/2" Snaplock Panels
fits Quadro, D450SL & E 1500
18 ga steel or SS, 2 hole, 3-1/2" width

Gauge	Qty/Box	Part#
18G Galv	250	CSN112312G18Q-250
18G Galv	125	CSN112312G18Q/1566854
18G Galv	125	CSN112312G18QV
18G Galv	125	CSN112312G18QV-MOD
18G SS	250	CSN112312S18Q



1-3/4" Snaplock Ultra Length HD

For 1-3/4" Snaplock Panels multiple versions to fit Zimmerman & low Newtech 675, Z175 Panels
18 ga steel or SS, 2 hole, 3-1/2" width

Gauge	Qty/Box	Part#	Height
18G Galv	250	CSN134312G18V	1.83"
18G SS	250	CSN134312S18V	1.83"



1-1/2" Snaplock Econo QSL

Fits Quadro 1-1/2" Snaplock Panels
E 1500, D450SL
20 ga steel or SS, 3 hole, 2-1/4" width

Gauge	Qty/Box	Part#
20G Galv	500	CSN112214G20Q
20G SS	500	CSN112214S20Q



1-3/4" Snaplock Econo Clip

Fits 1-3/4" Snaplock Panels (1-7/8")
fits Quadro, Rollformer, Newtech 675, Knudson, E US 175
18 ga steel or SS, 3 hole, 2-1/4" width

Gauge	Qty/Box	Part#
18G Galv	400	CSN134214G18
18G Galv	400	CSN134214G18V
18G SS	400	CSN134214S18
18G SS	400	CSN134214S18V



1-1/4" Snaplock Econo QSL

Fits Utility Panels, fits Quadro
24 ga steel 2" width

Gauge	Qty/Box	Part#
24G Galv	600	CSN11420G24QSL
24G Galv	600	CSN11420G24QSLV



1-1/2" Snaplock NT550 HD Clip

Fits Newtech 550, D550S
20 ga steel or SS, 2 hole, 3-1/2" width

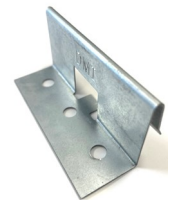
Gauge	Qty/Box	Part#
20G Galv	250	CSN112916G20NHD
20G Galv	250	CSN112916G20NHDV
20G SS	250	CSN112916S20NHD
20G Galv	250	CSN112916S20NHDV



1" Snaplock QSL HD

Fits Quadro 1" Snaplock Panel
18 ga steel 3.5" width

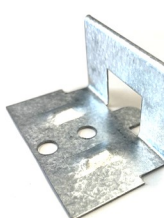
Gauge	Qty/Box	Part#
18G Galv	250	CSN100SLRU18GA250
18G Galv	200	CSN100350G18QSL



1-1/2"/1-1/4" Snaplock Newtech 450

HD no fastener relief dimples and flat tongue. Fits Newtech 450, EA1000, EA1100, Plusmax, D450
24 ga steel or SS, 3 hole, 3" width

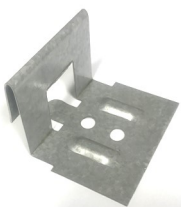
Gauge	Qty/Box	Part#
24G Galv	500	CSN11430G24V
24G SS	500	CSN11430S24V



1" Snaplock Econo QSL

Fits Quadro 1" Snaplock Panel
24 ga steel, 2" width

Gauge	Qty/Box	Part#
24G Galv	1,000	CSN10020G24QSL
24G SS	1,000	CSN10020S24QSL



1-1/2" Snaplock Newtech 450 7/8DL

Fits NT450, E S(A)1000, KNUDSON VP 21M 1.5"SL. WITH 7/8" DOWNLEG
24 ga steel or SS, 2 hole, 2" width

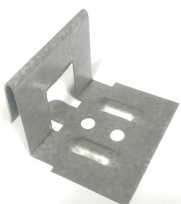
Gauge	Qty/Box	Part#
24G Galv	600	CSN11420G24U78
24G SS	600	CSN11420S24U78



1" Zimmerman SL1000

Fits 1", 1-1/2" Zim Snaplock Panels
24 ga steel or 304SS, 2 hole, 3" width

Gauge	Qty/Box	Part#
24G Galv	500	CSN112916G24Z
24G SS	500	CSN112916S24Z



1-1/4" Snaplock Utility 450 LD Clip

Fits Snaplock Panels, Offset Tongue
Fits Newtech 450, DMC 450, ES(A)1100
24 ga steel or SS, 2 hole, 2" width

Gauge	Qty/Box	Part#
24G Galv	600	CSN11420G24U
24G SS	600	CSN11420S24U



1" Snaplock Rollformer Corp Clip

Fits 1" Snaplock Panels (1-1/8")
Fits Rollformer
22 ga steel or 304SS, 2 hole, 2" width

Gauge	Qty/Box	Part#
22G Galv	1,000	CSN118200G22RFV
22G SS	1,000	CSN118200S22RFV

MECHANICAL LOCK STANDING SEAM FIXED PANEL CLIPS

DMI MECHANICAL LOCK FIXED PANEL CLIPS

Designed for secure fastening of mechanical lock style standing seam / concealed fastener metal roofing systems. Most styles available in G-90 galvanized, painted steel or stainless steel. Panel clips can be manufactured to fit panels from most brands and styles of roll forming machines. Please specify make and model of machine when ordering. (full box orders only). Most styles are engineered to give fastener relief, and heights of clips are listed in panel height. 1" tall panel would use 1-1/8" tall clip, 1-1/2" panel would use 1-5/8" clip, etc.



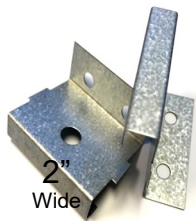
1" Mechanical Lock (1-1/8")
 7/16" Top fits RF, NT, KN, D100SS, EA1301, Galv or SS, 2 hole, 2" width

Gauge	Qty/Box	Part#
26G Galv	1,000	CMF1002716G26
24G Galv	1,000	CMF1002716G24
24G SS	1,000	CMF1002716S24
26G SS	1,000	CMF1002716S26



1-1/2" Mechanical Lock XHD (1-5/8")
 7/16" Top fits Z1500, EA1300, KR24, RF, US 1505 D150SS, 4 hole, 6" width

Gauge	Qty/Box	Part#
22G Galv	250	CMF1506716G22
22G Galv	250	CMF1506716G22V
24G SS	250	CMF1506716S24
24G SS	250	CMF1506716S24V



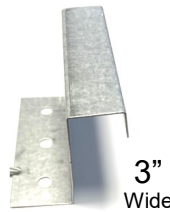
1-1/2" Mechanical Lock NFR (1-1/2")
 7/16" Top fits Z1500, KR12, EA1300 US 1505, D150SS 2 hole, 2" width
 NFR= No built in fastener relief this 1-1/2" panel clip is 1-1/2" in height.

Gauge	Qty/Box	Part#
26G Galv	1,000	CMF1372716G26
24G SS	1,000	CMF1502716S24NFR
26G SS	350	CMF1502716S26NFR



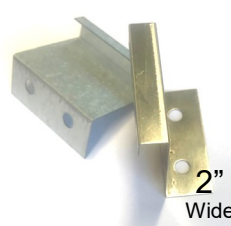
1-1/2" Mechanical Lock HD (1-5/8")
 7/16" Top fits Z1500, EA1300, KR24, RF, US 1505 D150SS, 2 or 3 hole, 3" width

Gauge	Qty/Box	Part#
24G Galv	500	CMF1503716G24V
24G SS	500	CMF1503716S24V
24G SS	500	CMF1503716S24



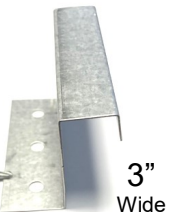
2" (2-1/8") Newtech Mechanical Lock
 3/4" Top fits RF, NT Ultraseam, Knudson, E, 3 hole, 3" width.

Gauge	Qty/Box	Part#
24G Galv	600	CMF218334G24
24G Galv	250	CMF218334G24V
24G SS	300	CMF218334S24 S.O.
22G Galv	600	CMF218334G22
22G Galv	250	CMF218334G22V



1-1/2" Mechanical Lock (1-5/8")
 7/16" Top fits RF, NT, KN, EA1300, D150SS Galv or Stainless, 2 hole, 2" width

Gauge	Qty/Box	Part#
24G Galv	1,000	CMF1502716G24V
24G Galv	1,000	CMF1502716G24
26G Galv	1,000	CMF1502716G26V
26G Galv	1,000	CMF1502716G26
26G SS	1,000	CMF1502716S26V
26G SS	1,000	CMF1502716S26
24G SS	1,000	CMF1502716S24 S.O.



2" Quadro Mechanical Lock
 5/8" Top fits Quadro 3 hole, 3" width.

Gauge	Qty/Box	Part#
24G Galv	600	CMF218358G24
24G SS	300	CMF218358S24 S.O.

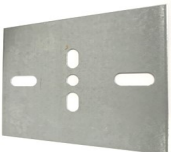


Batten Seam Clip
 24 Galv or Stainless, 2 hole, 2" width
 11/16" Down leg, Pre-folded, Dog Ears

Size	Gauge	Qty/Box	Part#
1"	24G Galv	1,000	CBC1020G24
1"	24G 304SS	1,000	CBC1020S24

S.O. = Special Order / Made to Order, minimums may apply.

DMI UNIVERSAL BEARING PLATES - Create a load bearing surface for panel clips or fasteners overtop of insulation boards.



Universal 4" x 5" slotted for Panel Clips

Size	Gauge	Qty/Box	Part#
4" x 5"	20ga G90	250	UBP4620G
6" x 6"	24ga G90	250	UBP6624G S.O.
4" x 5"	20ga 304SS	250	UBP4520S

ADDITIONAL METAL STAMPINGS



Commercial Box Gutter HD Hangers
 18 ga G-90 Galvanized or 0.063" Aluminum, 200 pieces per box
 5", 6", 7" and 8" available



Galvalume Goose Neck Vents
 Assembled with a removable screen. Quality galvalume construction, Made in the U.S.A. No Warranty, No Approvals, With or Without Damper. Available sizes 4" and 10"
 See page 49 for more details.

MECHANICAL LOCK STANDING SEAM METAL EXPANSION CLIPS

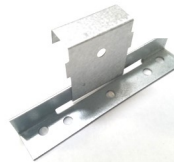
EXPANSION CLIPS FOR MECHANICAL LOCK PANEL CLIPS

Designed to allow for thermal expansion while providing secure fastening of mechanical lock style standing seam / concealed fastener metal roofing systems. The expansion style clips are available in 3 different styles one piece pre-assembled style, a two piece job site assembled and a butterfly style two piece job site assembled. Most styles are available in G-90 galvanized or 304 stainless steel. All expansion clips below are Made in the U.S.A.



2" Newtech One Piece Expansion
3/4" Top fits Newtech Machines SSQ200
2 hole, 4-3/8" width, 1/2" standoff.
No Assembly Required.
Galvanized G90 Top 22ga, Base 16G.
Stainless 304S Top 24ga, Galv Base 16G

Type	Qty/Box	Part#
Galvanized	100	CMEMLG200NT
Stainless	100	CMEMLS200NT



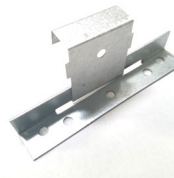
2" Newtech Two Piece Expansion
3/4" Top fits Newtech Machines, SSQ200
5 hole, 5 base width. This 2 piece clip requires field assembly. Each piece top and bottom sold separately. (Ideal for wood substrates)

Gauge	Qty/Box	Part#	Material
Top 24G	1,000	CMT2003416G24	Galv
Top 22G	1,000	CMT2003416G22	Galv S.O.
Top 24G	1,000	CMT2003416S24	SS S.O.
Top 26G	1,000	CMT2003416S26	SS S.O.
Base 18G	500	CMB500G18	Galv S.O.



2" Quadro One Piece Expansion
5/8" Top fits Quadro Machines
2 hole, 4-3/8" width, 1/2" standoff.
No Assembly Required.
Galvanized G90 Top 22ga, Base 16G.
Stainless 304S Top 24ga, Galv Base 16G

Gauge	Qty/Box	Part#
Galvanized	100	CMEMLG200QP
Stainless	100	CMEMLS200QP



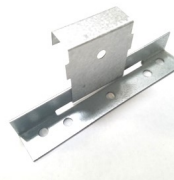
1-1/2" Two Piece Expansion
7/16" Top fits Newtech and Quadro, SS150
5 hole, 5 base width. This 2 piece clip requires field assembly. Each piece top and bottom sold separately. (Ideal for wood substrates)

Gauge	Qty/Box	Part#	Material
Top 24G	1,000	CMT1502716G24	Galv S.O.
Top 26G	1,000	CMT1502716S26	SS S.O.
Base 18G	500	CMB500G18	Galv



2" NT Low Float Double Lock Expansion
3/4" Top fits Newtech
2 hole, 4-3/8" width, Low Float with hot melt sealant applied
Galvanized G90 Top 22ga, Base 16G.

Gauge	Qty/Box	Part#
Galvanized	80	753279 S.O.



1-1/2" Two Piece Expansion Assembled
7/16" Top fits Newtech and Quadro, SS150
5 hole, 5 base width. (Ideal for wood substrates)
24 Ga Galv Base and 26 Ga Galv Top.

Qty/Box	Part#	Material
500	CMEMLG1502426	Galvanized



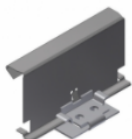
1-1/2" One Piece Expansion
fits Quadro & Newtech Machines, SS150
2 hole, 4-3/8" width, 1/2" standoff.
Galvanized G90 Top 22ga, Base 16G.
Stainless 304S Top 24ga, Galv Base 16G
Stainless 304S Top 26ga, Galv Base 16G

Gauge	Qty/Box	Part#	Top/Base
Galvanized	100	CMEMLG150	22/16
Stainless	100	CMEMLS150	24/16
Stainless	100	CMEMLS150LD	26/16



1-1/2" Butterfly Style Expansion Clip
2 hole 4-3/8" base, ribbon top. SS150
Field assembly required as this clip is sold in two different parts.

Part	Gauge	Qty/Box	Part#
Top	24 Galv	200	1238708 S.O.
Top	SS	24 304SS	1238709 S.O.
Top	SS	26 304SS	1236937 S.O.
Base	22 Galv	200	1126602 S.O.



TRQ-250 Newtech Trapezoid Panel Expansion Clip
fits TRQ250
2 hole, 22 ga top, 16 ga base, G90 Galv.

Qty/Box	Part#
100	B110230 S.O.



2" Newtech Butterfly Style Expansion Clip
2 hole 4-3/8" base, ribbon top. SSQ200
Field assembly required as this clip is sold in two different parts.

Part	Gauge	Qty/Box	Part#
Top	22 Galv	150	1216534
Top	SS	22 304SS	1342536 S.O.
Base	22 Galv	150	1126600
Base	SS	22 304SS	1270019 S.O.

#43 & #44 BLIND RIVETS

Blind rivets fasten joints without access to the reverse side of the sheet metal. DMI #43 painted stainless steel rivets are manufactured of corrosion resistant 302 / 304 stainless steel. DMI SS rivets exceed the corrosion resistant standards put forth in Florida Building Code section 1506.6. DMI also offers un-painted rivets in 304 stainless steel, 316 stainless steel, aluminum and copper/brass. Rivet length is measured to the end of the rivet body. A #43 rivet has a 1/8" dia body with a 5/16" length. Its grip range is material from .12" to .187" (1/8" - 3/16").



100 piece per bag packaging

40 colors of painted rivets now available, see rivet color chart...

Painted SS	Qty/Box	Part#
#43 304SS	5,000	DMI2L1290(insert color code)100
Mill Finish SS	Qty/Box	Part#
#43 304SS	5,000	DMI2L1290C-100M

250 piece per bag packaging

Mill Finish Type	Qty/Box	Part#
#43 304SS	6,000	DMI2L1290CV
#44 304SS	6,000	DMI2L1300CV
#43 316SS	6,000	DMI43316SS
#43 Copper	6,000	DMI2L4300C
#43 Alum Silver	6,000	DMI2L43A1116
#43 Alum Br White	6,000	DMI2L43A014



TRIM FASTENERS MTW CORROSION RESISTANT FASTENERS

BIMETAL SS LOW PROFILE TRIM SCREW Full 304 series stainless steel fastener capable of penetrating metal roofing panels without pre-drilling. Carbon steel fused tip technology allows this fastener to self tap and provide years of corrosion free performance, backed up by a 40 year limited warranty. The low profile T25 internal drive head provides a pleasing appearance. Painted fasteners are now available 20 colors in the Midwest service center.

Available Sizes Qty/Box Part#
#9 x 1-1/2" 2,500 DMI21124180(XXX)
Other lengths available on request.



FULL 304 STAINLESS STEEL HWH FASTENERS

Developed for use in high corrosion areas and panel installations with-in 3000 lft of salt water. The high nickel content of 304 stainless steel makes the material too soft to penetrate steel panels but helps provide very high levels of corrosion resistance. Additional labor will be required for (each fastener location in the panel must be pre-drilled and sealed) installation but those efforts will pay off in an extended corrosion free performance. DMI4 parts are coated with the DMG85 coating that helps resist dissimilar metal reactions. This coating also provides the corrosion resistance levels needed to earn is Miami-Dade Fastener Listing # L 19-0219.01.



MIAMI-DADE COUNTY LISTED #L19-0219.01

#9-15 w/12mm washer 1/4" Hex Drive
Size Qty/Box Part#
1" Bright White 014 2,500 DMI4HSS9100S014
1-1/2" Silver 2,500 DMI4HSS9150SA
1-1/2" Bright White 2,500 DMI4HSS9150S014



#9-15 w/12mm Aluminum washer 1/4" Hex Drive
Other colors painted to order
Size Qty/Box Part#
#9 x 1" 3,000 DMI2EO225CKF
#9 x 1-1/2" 2,500 DMI2EO270CKF
#9 x 2" 2,000 DMI2EO272CKF
#9 x 2-1/2" 1,500 DMI2EO275CKF

Part # on box may vary on #9-15 parts.

#12 WOODZIP S.C.A.M.P. 304 STAINLESS STEEL 5/16" CAP HEAD

Is a premium fastener with more bite perfect for harsh climates and panel systems designed for coastal or high pressure wind zones. The #12 Woodzip S.C.A.M.P. is designed with a 5/16" drive 304 stainless steel cap head with a larger bearing surface to clamp a larger surface of the panel. A larger diameter shank with a HI-LO thread for higher withdrawal resistance than standard #10 fasteners. The pig-tail reducing TP-17 cut-point allows for speedy installation and reduces splitting of wood substrates. The SCAMP has been tested for installation into plywood, OSB, and dimensional pine lumber as well as standard concrete and CMU block substrates.



MIAMI-DADE COUNTY LISTED

#L19-0219.02

Mill Finish Sizes Qty/Box Part#
#12 x 3/4" 2,500 DMI4SSC12034M
#12 x 1" 2,500 DMI4SSC12100M
#12 x 1-1/2" 2,000 DMI4SSC12150M
#12 x 2" 1,500 DMI4SSC12200M
#12 x 2-1/2" 1,000 DMI4SSC12250M
#12 x 4" 1,000 DMI4SSC12400M



#12 ATEAM Hardened Aluminum Fastener

The ATEAM fastener was developed to fill the need for a fastener that would be compatible with screw through Aluminum roofing panels and trim. Also useful in high corrosion environments such as the installation of aluminum liner panels in animal confinement buildings.

- Drilling, tapping and fastening all in one step.
- Select hardened fastener with #1 drilling point to drill and tap 0.032 or 0.040 thickness of aluminum panels.
- This fastener meets Florida Building Code 2017 code version corrosion resistance requirements FBC1506.6 and FBC R902.5.2.
- Assembled with a large EPDM with Aluminum washer guard for proper sealing and better load distribution.
- Requires 5/16" specific driver - non compatible with impact drivers

Pull out	Lbs Ultimate
2x Pine: 481	Shear: 489
1/2" Ply :441	
7/16 OSB: 212	



Available Part#
#12 x 1-1/2" Bright White 014 DMI4A12150014
#12 x 1-1/2" Silver 1161 DMI4A121501161

Other colors available on request , with mini-mums and lead time.

DRILL BITS

Direct Metals, Inc offers quality drill bits from a variety of high quality manufacturers. Double ended drill bits for steel panels, SDS drill bits for masonry. Full package orders only. Some sizes may have a 5 day lead time. Please inquire with your salesperson if you require additional sizes or types of drill bits.



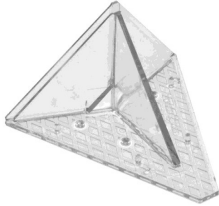
Available Sizes Use Useable Qty Part #
1/8" x 2" #30 DE Steel 1" 12 DMI9DEDB2ATF
1/4" x 6-3/8" SDS Concrete 4" 25 DMI9DB14638SDS
7/32" x 2.5" Steel 1 DMI9SWSN7/32
3/8" x 4" Polycarbonate 1 DMI9DB384



POLYCARBONATE SNOW GUARDS

Made of high grade clear virgin grade UV stabilized polycarbonate material. Helps to protect against dangerous snow avalanches around door opening and walkways on metal roofing. Full box orders only.

SNOWShield Panel Guard designed with a wide Y shaped base that makes this adhesive plastic snow guard effective at stopping snow and the drain allows the snow to melt off naturally. 5.5" wide base and 4" height pre-drilled holes for easy mechanical fastening.



<u>Description</u>	<u>Qty/Box</u>	<u>Part#</u>
Clear	50	SSPGC

SNOWShield Rib Guard for Standing seam designed for use with standing seam metal roofing and to clamp on to the metal seam without penetrating the roof. This clamp on snow guard is attached using two stainless steel set screws. 5.5" wide base and 4" height with two different sizes to accommodate different height panels. .



<u>Description</u>	<u>Qty/Box</u>	<u>Part#</u>
Up to 1-1/2"	50	SSSGRG1C112
Up to 2-1/4"	50	SSSGRG2C214

PIPE FLASHINGS FOR METAL ROOFING



DMI PIPE FLASHINGS FOR METAL ROOFING - UNIVERSAL ROUND BASE

Used to waterproof roof penetrations in metal roofing panels. Made of pliable rubber with a 20 year limited warranty. Our flashings feature an aluminum fastening ring with grooved sealant holding base that is adjustable to most common roof pitches. These parts are 100% North American Made and qualify for the Buy American Plan. The #3 pipe flashings have a UPC Approval

Standard (STD) flashings are made of E.P.D.M. rubber with an application temperature range of -67 degF to 212 degF

High Temperature (High Temp) flashings are made of gray silicone rubber with an application temperature range of -101 degF to 437 degF.



Size	Fits Pipes	Base	Qty/Box	STD Grey	STD Black	High Temp Grey	#3 is also available in these colors
#1	0.25" - 2.5"	4.75"	15	DML1GR	DML1BR	DML1HTG	Color Part#
#2	1.75" - 3"	6.25"	15	DML2GR	DML2BR	DML2HTG	Bright Red DMLRD301BR
#3	0.25" - 5"	7.75"	15	DML3GR	DML3BR	DML3HTG	Brown DMLRD301BN
#4	3" - 6.25"	9.25"	10	DML4GR	DML4BR	DML4HTG	Copper DMLRD301CP
#5	4.25" - 7.75"	10.5"	10	DML5GR	DML5BR	DML5HTG	Dark Blue DMLRD301DB
#6	5" - 9"	13"	10	DML6GR	DML6BR	DML6HTG	Dark Gray DMLRD301NG
#7	6" - 11"	14.5"	10	DML7GR	DML7BR	DML7HTG	Dark Green DMLRD301DG
#8	7" - 13"	16.5"	5	DML8GR	DML8BR	DML8HTG	Light Blue DMLRD301LB
#9	9" - 19"	25-1/4"	5	DML9GR	DML9BR	DML9HTG	Tan DMLRD301TAN
#10	12" to 28"	34" square	5	DML10GS		DML10HTR	Terracotta DMLRD301TC
							White DMLRD301WT

DMI E.P.D.M. PIPE FLASHINGS - SQUARE BASE PYRAMID STYLE

Used to waterproof roof penetrations in metal roofing panels. Available in standard 20 year EPDM. Our flashings feature an aluminum fastening ring with grooved sealant holding base that is designed to be installed as a diamond shape. These parts are 100% North American Made and qualify for the Buy American Plan. Standard (STD) flashings are made of E.P.D.M. rubber with a application temperature range of -67 degF to 212 degF. #1 shown

Size	Fits Pipes	Base	Qty/Box	STD Grey	STD Black
Mini	0.125" - 0.75"	2"	30	DML0GS	DML0BS
#2	1.25" - 3"	6"	15	DML2GS	
#3	1/4" - 4"	8"	15	DML3GS	DML3BS
#4	3" - 6"	10"	10	DML4GS	DML4BS
#5	4" - 7"	11"	10	DML5GS	DML5BS
#8	7" - 13"	17"	5	DML8GS	
#10	12" to 28"	34"	5	DML10GS	



EAF ANGLE FLASHINGS- FOR STEEP PITCH ROOFS

Designed for use on extreme pitch metal roofs. Built in 40 degree angle to make installation on extreme pitch roofs quick and easy. Manufactured in a diamond base, in Black or Gray E.P.D.M.

Size	Fits Pipes	Qty/Box	STD Grey	STD Black
EAF	1/4" - 6"	10	EA101GA	EA101BA



35 YR MASTERFLASH SQUARE BASE

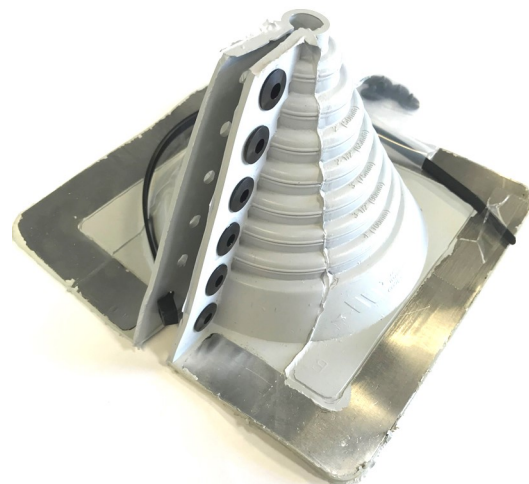
New ICC-ES listed 35year limited warranty square/diamond base pipe flashing. Used to waterproof roof penetrations in metal roofing panels. Available in black only with black fastening flange. These parts are 100% North American Made and qualify for the Buy American Plan. #3 shown.

Size	Fits Pipes	Qty/Box	Part#
#2	1.25" - 3"	15	DMLICCSQ201B
#3	0.25" - 4"	15	DMLICCSQ301B
#4	3" - 6"	10	DMLICCSQ401B
#8	7"-13"	5	DMLICCSQ801B



DMI SQUARE BASE RETROFIT FLASHINGS

Designed to waterproof electrical conduit, masts, service poles and collared pipe penetrations through metal roofing panels. Includes corrosion resistant band and rivets for fastening. Accurate side markings make it easy to cut for a specific size. Light gray, square base E.P.D.M. rubber construction with UPC approval and 20 year warranty. Standard color is gray, however these parts are available by special order in black E.P.D.M. or red high temp silicone. Buy American Plan /100% N. American Made.



GREY E.P.D.M.

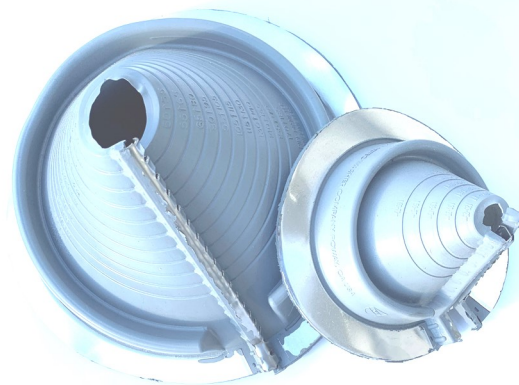
Size	Fits	Base	Qty/Box	Part#
#101	1/2" - 4"	8"	5	DML101G
#201	4" - 9-1/4"	14"	5	DML201G
#301	9-1/4" - 16-1/4"	14"	5	DML301G

RED HIGH TEMP SILICONE

Size	Fits	Base	Qty/Box	Part#HT
#102	1/2" - 4"	8"	5	DML102H
#202	4" - 9-1/4"	14"	5	DML202H
#302	9-1/4" - 16-1/4"	14"	5	DML302H

DMI ROUND RETROFIT FLASHINGS - (Zipperboot)

Designed to waterproof electrical conduit, masts, service poles and collared pipe penetrations through metal roofing panels. Stainless steel fastening teeth interlock with the rubber for fastening at the split. E.P.D.M. rubber construction with UPC approval and 20 year warranty. Standard gray to be used on mill finish metal roofing. #802 are available for special order in black EPDM or a white high temperature silicone.



Size	Fits	Base	Qty/Box	Part#GR
*#1	1/4" - 2-3/4"	6-3/10"	10	DM801G
*#2	2" - 7-1/4"	10-3/4"	10	DM802G
*#3	3-1/4" - 10"	14-1/2"	5	DM803G

Size	Fits	Base	Qty/Box	Part#WT
#802	2" - 7-1/4"	10-3/4"	5	DM802W

#802 White High Temp is not American Made or BAP, and is made of white silicone <500 deg F.

DEK-STRIP™ EXPANDABLE EDGED FLASHING

STRETCHES TO ANY SHAPE, SEALS, & STAYS

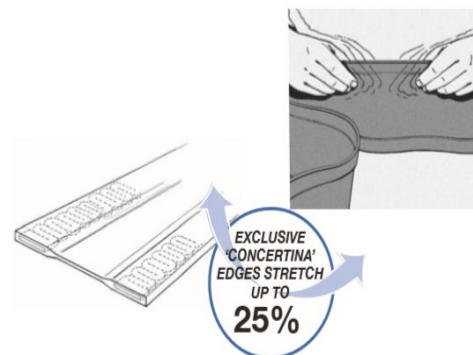
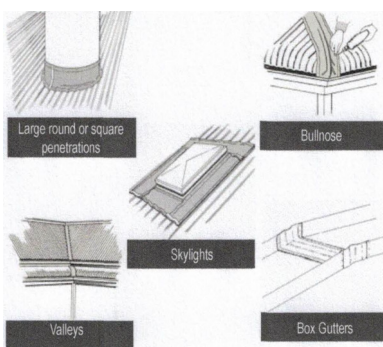
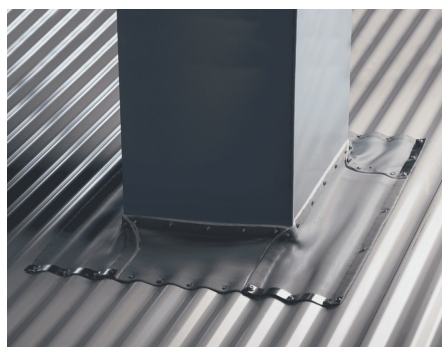
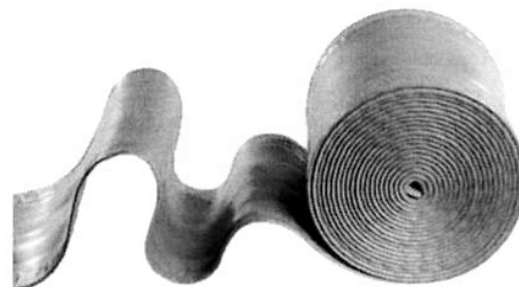
Wraps around almost any profile, paintable after installation, great for large, round pipes. Serpentine edges stretch up to 25% for added length. Handles vibration and expansion, TPE has a continuous service temperature range of -58°F to +240°F. Imported.

APPLICATIONS INCLUDE:

Large square and round ducts, chimneys, gutter detail, parapet flashings, skylights, expansion joints, stepped roof, dissimilar roof profiles, transition wall, gambrel roof and flash between dissimilar materials.

AVAILABLE SIZES:

7"x75' PN# DMDS775G
9"x75' PN# DMDS975G
12"x75' PN# DMDS1275G,



SPECIALTY PIPE FLASHINGS FOR METAL ROOFING

SIDE WALL FLASHING

This low profile flashing is available in standard or retrofit (as shown). This is designed to flash in pipe or wire penetrations in metal sidewall penetrations. Available in Gray or Black EPDM in standard and white silicone in a high temperature retrofit version.

Packaged 10 pcs/box



MR VENT-FLASH

Designed to flash turbine vents, roof exhaust fans and goose neck vents. Inside opening 11.75" x 11.75" outside base is 24" x 24". Adaptable base designed to mold to most panel configurations and roof pitches. Made of UV protected EPDM that has an application temperature range up to 212 degF. Standard parts are gray.

Packaged 10/box, Part# DMLVFLG24



MULTI-FLASH SQUARE VENT, SQUARE PIPE BOOT

Fits standard square pipes and vents from 3/4" to 5" and retrofit applications for 1-1/2" up to 4". High quality black E.P.D.M. with 20 year warranty. Adaptable base and no hassle stainless steel gripper to secure in retrofit applications. Square base.

Packaged 10 pcs/box
Part# DMLMFSQ101BA



CAP FLASHINGS MASTERCAP & RIBCAP

Designed to seal up-slope profile ends. Popular applications such as: HVAC curb penetrations, skylight curb penetrations and chimney flashing points.

The MASTERCAP1 measures 3" high x inner Depth of 2" and Base width of 4-1/2" will accommodate many standing seam metal roofing profiles from 1-1/4" to 3" and popular commercial roofing panels with an 1-1/4" to 2" tall rib such as MR12 / R Panel / PBR Panel. (Old Part#DSLMC101BA/GA, DMLMC051/MC101NG) *** New Part number and packaging, **Packaged 20 pcs per box Gray part# MC101BA**

THE RIBCAP is designed specifically for 3/4" rib profile ends. **Packaged 10 pcs per box Part# DMRIBCAP** Size: 3/4" overall height x inner wall width 2" inner depth of 2-3/4".



Gray E.P.D.M.

LIGHTNING ROD PIPE FLASHING

Designed to weatherproof lightning rod or wire penetrations through metal roofing panels or ridge caps. Easy to use, with the perfect low profile design. Also used in some solar stand applications on metal roofing. Packaged 40 pieces per box. Imported. Fits 0" to 1-3/8" Part# DM1RRG



END CAP FLASHING

Constructed of gray E.P.D.M. with a 20 year warranty. Applications include skylight, cupola and ridge ends. Flexible, corrosion resistant aluminum base conforms large standing seam and trapezoidal metal roof panels. Imported. 10 pcs per box

Part# DM1DC1



FIX-A-FLASH MASTERFLASH

Solution for smaller pipes with an oversized hole in your metal panel, and solution for overflash application of old pipe flashings. E.P.D.M. Black 20yr warranty rubber and adaptable base. Fits 0" to 15" pipes with a 19-1/2" base. Buy American Plan. 5 pcs per box Part# FF851BC



MULTI-PART MASTER FLASH™

Easy to use 4 in 1 flashing, up to 4 cables or wires per flashing. Stainless steel gripper to secure in retrofit applications. Accommodates four 1/4" lines and 1 pipe 1/4" - 2-3/4". B.A.P.

Black E.P.D.M.
10/box
DMLMP101BA

Red high temp
10/box
DMLMP102RA



GEOCEL™ 2300 CLEAR TRIPOLYMER SEALANT

A truly crystal clear sealant. 2300 construction Tripolymer Sealant is a single component, high performance elastomeric sealant for use in a wide variety of roofing, manufacturing, solar and general construction applications. For use on asphalt shingles, coated steel (Kynar 500™ based finishes), concrete, vinyl, steel and other common roofing substrates. The product offers exceptional elongation and flexibility, is UV resistant and is paintable. Not for use on Polycarbonate panels. Also available in select colors. Now available in cardboard or plastic tubes, 10 oz tubes 24/case.



Tube Style	Qty/Box	Part#
Cardboard Clear	24	66100
Plastic Clear	24	66900
Copper Penny	24	66138
Metallic Silver	24	66139

GEOCEL™ 2320 GUTTER AND NARROW SEAM TRIPOLYMER SEALANT

2320® and 2321 Gutter and Narrow Seam Sealant is a single-component, elastomeric, semi-self-leveling, high performance tripolymer sealant designed to prevent the passage of air and moisture through small joints or seams. It is semi-self-leveling, paintable and offers a high level of UV resistance. For use on asphalt shingles, brick, masonry, concrete, glass, vinyl, wood, sheet metal and other common building substrates. Not for use on polycarbonate panels. Now available in cardboard 10 oz tubes, 24/case.



Tube Style	Qty/Box	Part#
Cardboard Clear	24	66100

GEOCEL™ PHANTOM COLOR MATCH METAL ROOFING SEALANT

The Phantom Metal Roof Sealant comes in 6 translucent, customizable colors that allow any panel color to shine through and blend with the surface for a great look and superior protection. It offers a high level of UV resistance, exceptional elongation and flexibility and excellent adhesion to coated and painted metal panels even in damp applications. For use on metal, brick, masonry, concrete, glass, tile, wood, sheet metal and other common building substrates. Not for use on polycarbonate panels. Now available in plastic weatherproof 10 oz tubes, 12/case

- No need to bring multiple colors to the jobsite to find a match
- Allows each color to transform and match the color it's being applied to in a 24 hr period
- Provides excellent adhesion to coated metal substrates and adjacent substrates
- Applies in adverse weather: damp, cold or hot



12 cartridges (9.5 lbs.) per case; Case dimensions: 8 1/4" x 6 1/8" x 12"H

Part #	Color (USA)	UPC	SCC
GC88901	Translucent White	0 79239 88901 4	100 79239 88901 1
GC88902	Translucent Gray	0 79239 88902 1	100 79239 88902 8
GC88905	Translucent Bronze	0 79239 88905 1	100 79239 88905 8
GC88910	Translucent Green	0 79239 88910 6	100 79239 88910 3
GC88913	Translucent Blue	0 79239 88913 7	100 79239 88913 4
GC88923	Translucent Red	0 79239 88923 6	100 79239 88923 3

Product colors shown are an approximation and are not intended to be used for exact color matching.

GEOCEL™ 4350 COLOR METAL ROOFING & SIDING SEALANT

Geocel 4350™ provides a strong, long lasting bond to PVDF, SMP, and polyester coated steel, bare galvanized, Galvalume® metal panels, aluminum, copper, skylights, glass, brick, block, wood and vinyl siding. The 4350 is a Hybrid sealant that will provide a long lasting watertight seal and wont shrink. Exceeds ASTM C-920 Class 50 test parameters and remains permanently flexible. It offers UV resistance, and is designed for use on PVDF, SMP, and polyester coated steel, bare galvanized and galvalume panels, copper, glass, brick, wood, and Vinyl siding. Not for use on polycarbonate panels. 4 stock colors additional colors available by special order with 6 case minimum. Now available in plastic weatherproof 10 oz tubes, 24/case.



Color	Part#
Bright White 014	43550
Burnished Slate 042	43541
Charcoal Gray 051	43523
Light Gray / Nantucket	43522

ACRYLIC BUTYL CAULK, ACRYL-R™ 5430 NON SKINNING / NON SAG SSR SEALANT

SM5430 Acryl-R® is a white non-skinning, non-drying sealant based on a unique elastomer that provides a non-stringy consistency and excellent resistance to severe environmental conditions of heat, cold and moisture. (DO NOT EXPOSE TO SUNLIGHT). It has excellent webbing characteristics and adhesion to GALVALUME®, GALVALUME PLUS®, ACRYLUME®, ZINCALUME®, KYNAR 500®, siliconized and polyvinyl fluoride painted metals.

TYPICAL USES:

SM5430 is designed for factory sealing the female lip of a concealed standing seam roof (SSR) rib, as well as wall panels and polyurethane foam panel joints. Excellent for sealing between dissimilar metals to prevent electrolysis. Excellent for use as an acoustical sealant. Excellent for sealing hidden details in window and door installations; bedding of mounting fins and flashing and sealing end dams and receptor pans.

Packaging:

30 (10.1oz) tubes/cartridges per carton. Color:White Part # DMSM5430WC
50 gallon drum with polyliner. (4 drums/pallet) Color:White Part # DMSM5430W50 (made to order)



DIRECT*SEAL LONG LIFE UNIVERSAL CLOSURE ROLLS

Universal closure rolls designed to seal gaps in metal roofing, window and door installations. When compressed, Direct*Seal will become a water, pest, wind, and dust barrier in valley, hip and other panel to panel or panel to trim applications. Direct*Seal can also be used to close in gaps around windows and doors to help increase the energy efficiency of your building. Direct*Seal comes fully expanded in a single wrapped roll and is compressed at time of application.

Application Guide: Compression of the product is required to achieve the following:
25% Compression required for dust & sound protection, pest resistance
50% Compression required for wind, air and rain protection up to 20 psf.



Available Sizes	Qty/Box	Part#
1" x 1" x 20'	20	DDS101020
1-1/2" x 1-1/2" X 20' 10	10	DDS151520
2" x 2" x 10'	10	DDS202010

Color : Gray

Butyl*Roll PREMIUM BUTYL TAPE SEALANT ROLL

Designed for sealing and preventing the entry of moisture, air and dust into metal lap joints, Butyl*Roll has expanded to serve a wide range of applications. Unlike tube sealants, Butyl*Roll provides a consistent shaped bead, and is quick and easy to apply. Meets or exceeds the following specifications: MIL-C-18959B TIICB, TT-C-1996A TIICB, AAMA 904.3-92 and AAMA 807.3-92 and is Made in the U.S.A.

ADVANTAGES:

A premium quality sealant roll made of 100% solids, highly rubbery, sticky and easy to apply. It shows excellent performance over a wide range of temperatures and conditions. Excellent adhesion to Galvalume and Kynar 500, non-staining and permanently flexible. Butyl*Roll is mold and mildew resistant. Unlike many of the competitors Butyl*Roll is **Approved for use on Polycarbonate Panels**.

Standard stock sizes include

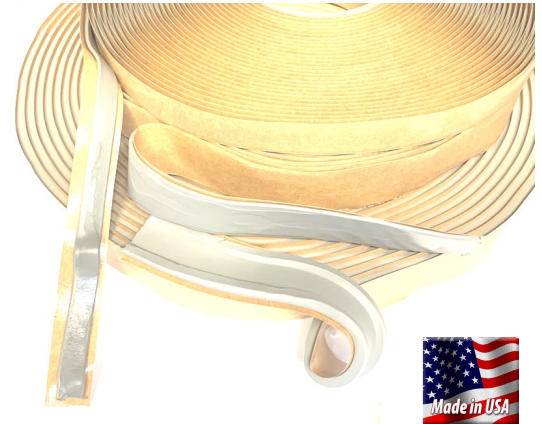
Size	Qty/Box	Part#
Single bead styles		
3/32 x 3/8" x 45'	40	DMBT3323845
3/32 x 1/2" x 45'	32	DMBT3321245
3/32 x 3/4" x 45'	24	DMBT3323445
3/32 x 1" x 45'	20	DMBT332145

Double bead styles

3/16 x 7/8" x 40'	10	DMBT31678D
-------------------	----	------------

Triple bead styles

3/16 x 7/8" x 25'	14	DMBT31678M
3/16 x 2-1/2" x 20'	6	DMBT3162122



BT-13 BUTYL TAPE SEALANT ROLL

BT-13 / Butyl*Roll TP-13 is the second DMI formularization of elastomeric butyl tape formulated for use in the metal building industry. BT-13 is a non-drying compound that does not stain and remains permanently flexible. In addition to providing superb adhesion to a variety of substrates, this material also prevents or reduces galvanic corrosion, electrolysis, noise transmission, and thermal transfer vibration. BT-13 is different than standard Butyl*Roll in that it offers more 200% more elongation and a slightly stringier consistency. BT-13 is **not** approved for use on Polycarbonate Panels.

ADVANTAGES:

BT-13 is mold and mildew resistant.
Service Temp -40degF to 180 degF
ASTM D412 Elongation 1000%
18 month shelf life.
Made in the U.S.A.



Single Bead

Size	Box Qty	Part #
3/32" x 3/8" x 45'	16	DMBT133323845
3/32" x 1/2" x 45'	16	DMBT133321245
3/32" x 3/4" x 45'	16	DMBT133323445
3/32" x 1" x 45'	14	DMBT13332145
1/8" x 1" x 50'	14	DMBT1318150
1/8" x 2" x 50'	4	DMBT1318250

Double Bead

Size	Box Qty	Part #
3/16" x 7/8" x 40'	14	DMIBT1331678D

Triple Bead

Size	Box Qty	Part #
3/16" x 7/8" x 25'	14	DMBT1331678M
3/16" x 2-1/2" x 20'	6	DMBT133162122

ACRYLIC BUTYL CAULK, ACRYL-R™ 5430 NON SKINNING / NON SAG SSR SEALANT

SM5430 Acryl-R® is a white non-skinning, non-drying sealant based on a unique elastomer that provides a non-stringy consistency and excellent resistance to severe environmental conditions of heat, cold and moisture. (**DO NOT EXPOSE TO SUNLIGHT**). It has excellent webbing characteristics and adhesion to GALVALUME®, GALVALUME PLUS®, ACRYLUME®, ZINCALUME®, KYNAR 500®, siliconized and polyvinyl fluoride painted metals.

TYPICAL USES:

SM5430 is designed for factory sealing the female lip of a concealed standing seam roof (SSR) rib, as well as wall panels and polyurethane foam panel joints. Excellent for sealing between dissimilar metals to prevent electrolysis. Excellent for use as an acoustical sealant. Excellent for sealing hidden details in window and door installations; bedding of mounting fins and flashing and sealing end dams and receptor pans.

Packaging:

30 (10.1oz) tubes/cartridges per carton. Color:White Part # DMSM5430WC
50 gallon drum with polyliner. (4 drums/pallet) Color:White Part # DMSM5430W50 (made to order)



ROOF VENT BOOT GUARD, BOOT COVER

Permanently stops squirrel and rodent damage to lead boot stack flashings. This one piece molded guard slides over existing lead flashings. The extra thick sturdy design is expected to last for the life of your roof. This guard is colored throughout in popular shingle colors and UV protected for durability. It improves appearance of roofing systems and installs in minutes without the need of special tools only a PH screw driver.

Size	Fits Stacks	Qty/Box	Standard colors
Small	1-1/2" to 2"	25	Gray, White, Brown, and Black
Large	3"	16	Gray, White, Brown, and Black
XLarge	4"	12	Gray, White, Brown, and Black



Special order colors include: Terracotta, Cream, Tan and Hunter Green.



Galvalume Goose Neck Vents

Assembled with a removable screen, peel back underside adhesive. Quality galvalume construction, now available with or without damper. Made in the U.S.A. No warranty, no returns on this product. This product has no approvals or testing, please check with your local building department before ordering.

10" Tall x 10" deep x width.

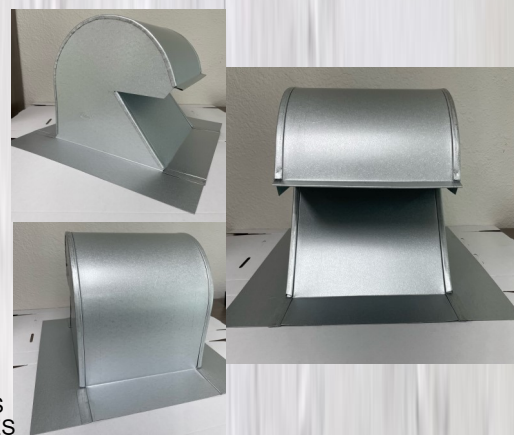
Standard stock sizes are 4" and 10" other widths can be made to order. Also available to be made to order in copper. Made in the U.S.A.

Without Damper

Size	Qty/Box	Part #
4"	14	DMI4GNVCOGLMES
10"	6	DMI10GNVCOGLMES

With Damper and Screen

Size	Qty/Box	Part #
4"	14	DMI4GNVDPCOGLMES
10"	6	DMI10GNVDPCOGLMES

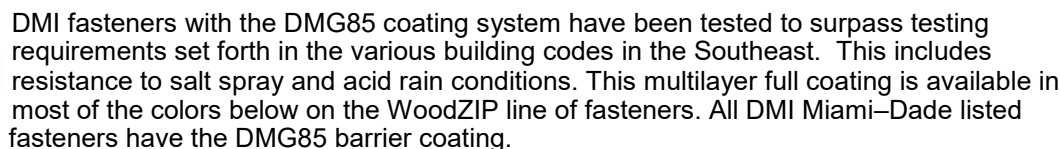


Galvalume Roof Jack Vents

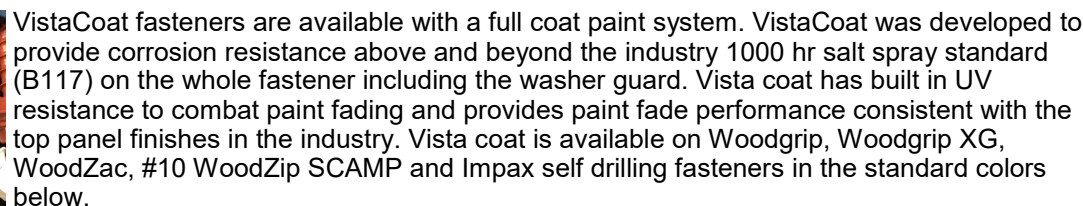
Used to cover venting duct pipe from bath and kitchen fans, and also for attic ventilation. Designed for a 4:12 pitch but can be adapted to 3:12-5:12 roof pitches. Built to resist high heat applications up to 350 deg F. Assembled with a removable screen, peel back underside adhesive. Quality galvalume construction, Made in the U.S.A. This product has no approvals or testing, please check with your local building department before ordering. No returns.

Size	Qty/Box	Part #
4"	10	DMI4RJGL

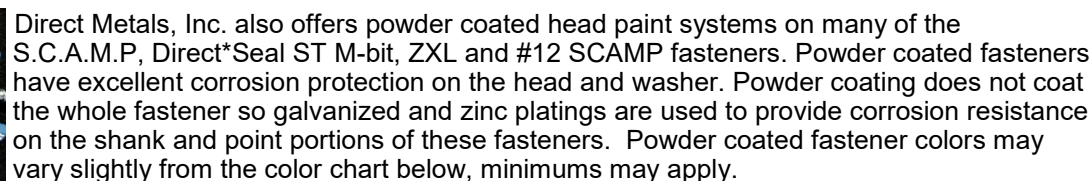


**DMG85**

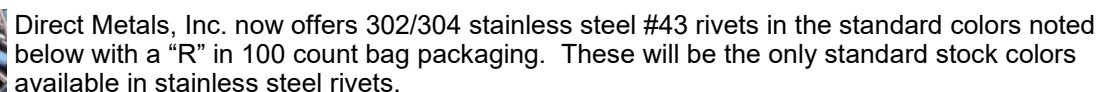
VistaCoat

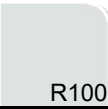













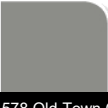
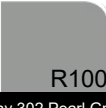
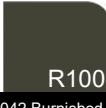
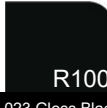
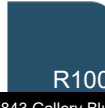

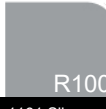





PowderCoat



Rivets



									
014 Bright White	001 White	348 Bone White	330 Warm White	553 Parchment	385 Patina	047 Colony Green	660 Hemlock	232 Evergreen	732 Denali Green
									
422 Taupe/Clay	109 Sand Beige	415 Beige	248 Light Stone	548 Ivory	928 Terracotta	102 Crimson Red	798 Hartford/Fern	925 ClassicGreen	228 Forest Green
									
020 Tan (STD)	230 Desert Brown	110 Cocoa Brown	374 Dark Brown	537 Medium Bronze	890 Red (STD)	691 Barn Red	074 Colonial Red	393 Burgundy	432 Blue Teal
									
578 Old Town Gray	302 Pearl Gray	850 Ash Gray	324 Dark Bronze	042 Burnished Slate	023 Gloss Black	507 Matte Black	421 Navy	843 Gallery Blue	012 C./H. Blue
				Metallics					
696 Pewter Gray	091 Zinc Gray	051 Charcoal Gray	416 Slate Gray	Metallic Paints >		1161 Silver	1160 Champagne	1162 Zactique	1116 Copper Pen

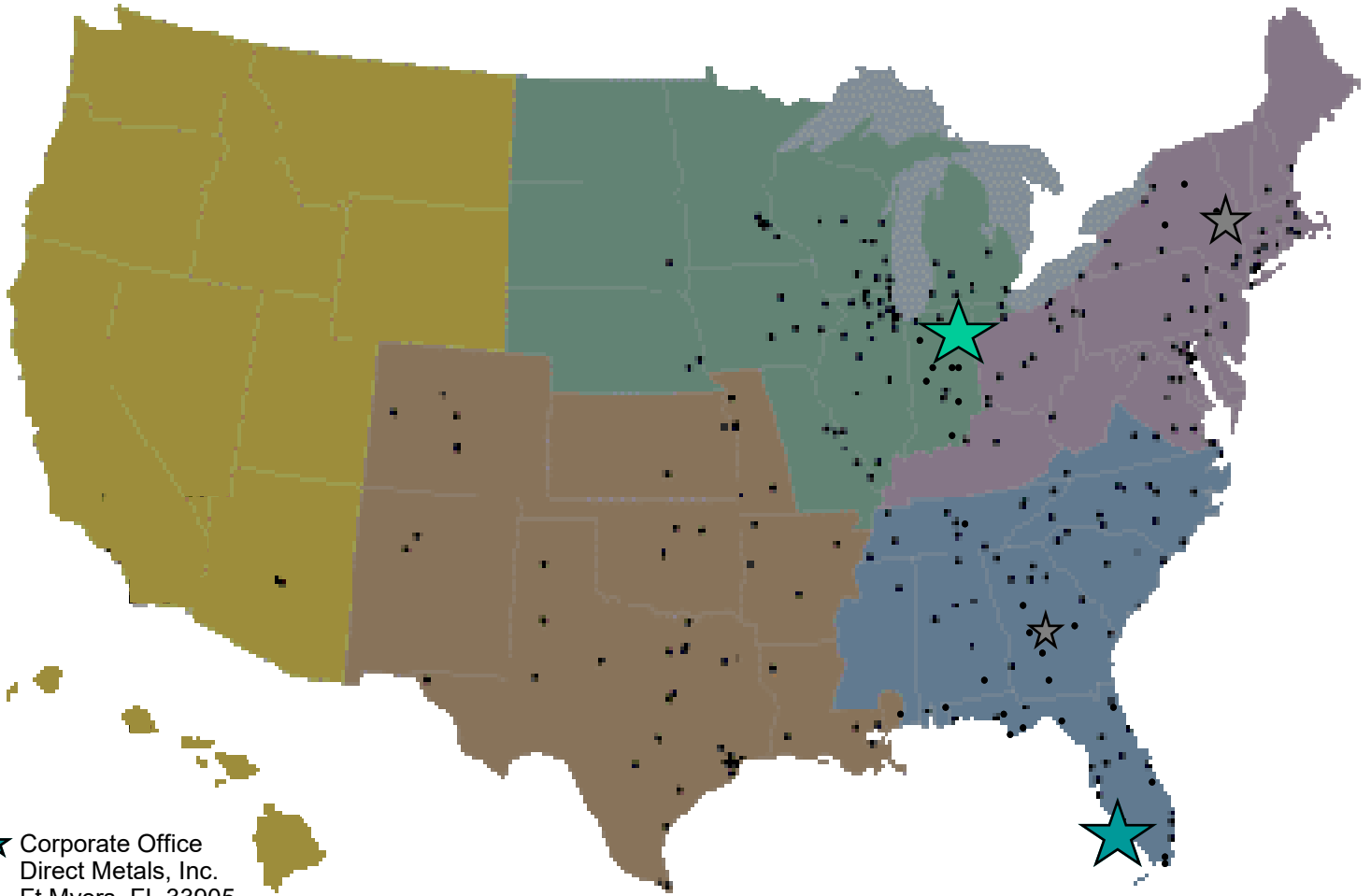
To find a registered DMI distributor call 855-800-8878

www.directmetalsinc.com



Distributor order entry or product inquiries:
Toll Free Phone: 855-800-8878
Toll Free Fax: 855-800-8877
orders@directmetalsinc.com
Website: www.directmetalsinc.com

We are proud to have over 1500 distributors across the United States of America. These distributors are serviced through our warehousing locations strategically placed to offer fast service and low shipping cost on our quality products.



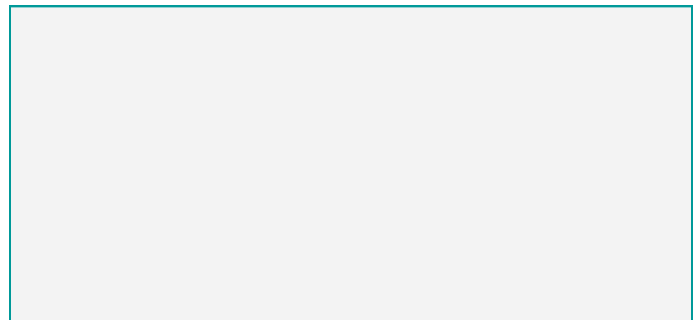
★ Corporate Office
Direct Metals, Inc.
Ft Myers, FL 33905
Phone: 855-800-8878

★ S.E. Service Center
1719 Baseline Ct.
Ft Myers, FL 33905
Phone: 239-599-8527
Fax: 239-599-8545
Inquiries: orders@directmetalsinc.com

★ Midwest Service Center:
Direct Metals of Indiana
1800 Jim Neu Drive, Suite 3
Plymouth, IN 46563
Phone: 574-935-3644
Fax: 574-935-3643
inquiries: orders@directmetalsinc.com

★ Interior Construction Products Service Center

Your Direct Metals, Inc. distributor is:



www.directmetalsinc.com