



# **METAL BUILDING FASTENER MINI CATALOG 2018**



**SELF DRILLING  
FASTENERS**



**LIGHT  
TRANSMITTING  
PANEL  
FASTENERS**



**STRUCTURAL  
FASTENERS**



**MASONRY  
FASTENERS**

# WASHERED METAL TO METAL SELF DRILL FASTENERS

## #12 IMPAX™ SELF DRILL AND IMPAX™ SEALER SD - MTM

Precision forged self drilling point for metal to metal fastening of metal panels to steel substrates. HWH bonded washer head style or sealer (SLR) cupped head style with E.P.D.M. seal washer. Galvanized plating plus VistaCoat longlife full fastener coating gives the entire fastener corrosion protection. Packaged 250 pcs / bag. Available to match metal panel colors.

## 1/4-14 IMPAX™ SELF DRILL STITCH PANEL TO PANEL SD1 - MTM

Designed for panel over-lap applications to stitch two steel panels together.

## 1/4-20 HEAVY DUTY IMPAX™ SELF DRILL METAL TO STEEL - MTM

Designed for installation into heavy steel up to 1/2" thick, bulk, zinc plated.



#12SD5

### Light/Medium steel drill up to 8 ga.

Available Sizes	Qty/Box	Part#
#10 x 5/8" SD2	5,000 Bulk	DMI2793187
#10 x 3/4" SD3	2,500	DMI2S2701CDF
#12 x 3/4" SD3	2,500	DMI2V2361EDF
#12 x 1" SD2.5	2,500	DMI2V4611FGF
#12 x 1-1/4" SD3	2,500	DMI2S4632EDF
#12 x 1-1/4" SD3	2,500SLR	DMI2V4636FGF
#12 x 1-1/2" SD3	2,000	DMI2V4721FGF
#12 x 2" SD3	1,500	DMI2V4777EDF
#12 x 2-1/2" SD3	2,000	DMI2S4902EDF
#12 x 3" SD3	1,500	DMI2S4952EDF
#12 x 4" SD3	1,000	DMI2S4981EDF
#14 x 1-1/4" SD3	2,000	DMI2798777
#14 x 1-1/2" SD3	2,000	DMI2798957
#14 x 2" SD3	2,000	DMI2799066

Additional Sizes available on request.

### Panel to Panel Stitch drill up to 18 ga.

Available Sizes	Qty/Box	Part#
#14 X 7/8 STSD1	2,500SLR	DMI2V5078FFF
#14 X 7/8 STSD1	2,500	DMI2V5051GUF

### Heavy Steel drill up to 1/2" thick.

Available Sizes	Qty/Box	Part#
#12 x 1-1/4" SD5	2,500	DMI2S4668EDF
#12 x 1-1/2" SD5	2,000	DMI2S4741EDF
#12 x 2" SD5	2,000	DMI2A2841EDF
1/4-20 x 3" SD5	1,500	DMI21356420
1/4-20 x 4" SD5	1,000	DMI21356421
1/4-20 x 5" SD5	750	DMI21356422
1/4-20 x 6" SD5	500	DMI21356423
1/4-20 x 7" SD5	500	DMI21356424
1/4-20 x 8" SD5	500	DMI21356425

Pull out (12-14) Lbs Ultimate	Buy American B.A.P: YES
12ga:1539	Shear: 2050
14ga:1010	Tensile: 2900
16ga:724	Torsional: 92 inlbs



#12SLR

Pull out SD3 (1/4-14)	Buy American B.A.P: YES
12ga:1697	Shear: 2850
14ga:1151	Tensile: 3800
16ga:887	Torsional:150inlbs



#14SLR Stitch

## STEELZIP SCAMP 304 STAINLESS STEEL CAPPED HEAD MTM

The STEELZIP SCAMP (Stainless Cap And Metal Point) self drilling fastener offers the protection of stainless steel without the cost of a full stainless steel fastener. The SCAMP features a 304 Stainless steel capped head which encapsulates the top of the EPDM seal washer. The shank of the fastener features precision drill points and DMG85 plating and coating system for corrosion protection on mill finish fasteners.



### Drill up to 8ga

Qty/Box	Part#
#12 x 1" SD3 2,000	DMI2S4530F
#12 x 1-1/4" SD3 2,500	DMI4SSCSD3125M
#12 x 1-1/2" SD2 1,500	DMI2S4690F
#14 x 1-1/4" SD3 1,500	DMI4SSCSD314125M
5/16x 1-1/4" SD3 1,000	DMI4SSCSD3516125M

### Panel to Panel Stitch drill up to 18 ga.

Available Sizes	Qty/Box	Part#
#14 x 7/8" SD1	2,500	DMI4SSCSD114078M
#14 x 1-1/8" SD1	2,000	DMI1175153

Ridged Insulation Fasteners with a unthreaded section to reduce panel jacking. Mill Only.

Available Sizes	Qty/Box	Part#
#12 x 2-3/8" SD3	1,000	DMI1172000
#12 x 3-1/4" SD3	750	DMI1171200
#12 x 4" SD3	500	DMI1172200

### Heavy Steel drill up to 1/2" thick.

Available Sizes	Qty/Box	Part#
#12-24 x 2" SD5	1,000	DMI1163000

Available to be painted to match your panel color. Some minimums may apply and part numbers will change depending on color.

## ZAC™ SELF DRILL - PREMIUM LONGLIFE MTM FASTENER

ZAC Self Drill is our most popular premium line of self drilling fasteners. The ZAC SD head is a strong, uniform zinc cap that withstands the toughest installation conditions and has a limited lifetime warranty long life head for superior corrosion protection on the head of the fastener. Thick E.P.D.M. seal washer and galvanized shank plating. Precision forged self drilling point for metal to metal applications up to 8 gauge steel (#12-14). 5/16" or 3/8" drive depending on size. ZAC SD is available painted to match your panel colors. Packaged 250 pcs / bag.



#14SD3

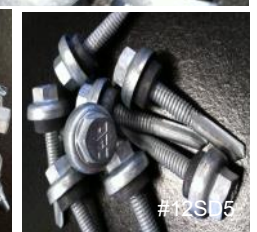
### Drill up to 8 ga

Qty/Box	Part#
#12x 1" SD3 2,500	DMI2S4591FLF
#12 x 1-1/4" SD3 2,000	DMI2X4646FLF
#12 x 1-1/2" SD3 1,500	DMI2X4731FLF
#12 x1-1/2" SD5 1,500	DMI2S4742FLF
#12 x 2" SD3 1,000	DMI2S4761FLF
#12 x 2-1/2" SD3 1,000	DMI2S4901FLF
#12 x 3" SD3 750	DMI2S4951FLF
#14 x 1-1/4" SD3 2,000	DMI2S5211FM
#14 x 1-1/2" SD2 2,000	DMI2S5287FM
#14x7/8"Stitch SD1 2,000	DMI2S5031FMF

Pull Over Lbs Ult #12	Pull out #12 -14 Steel Lbs Ult	Pull out #14 Stitch	#12-14 Values
22ga :1647	12ga : 1524	22 ga: 379	Shear: 2050
24ga: 1310	14 ga : 901	24 ga: 304	Tensile: 2900
26ga: 794	16 ga : 665	26 ga: 204	Torsional: 92 in-lbs



#14SD1



#12SD5



## S.C.A.M.P. STAINLESS STEEL CAP HEAD REPLACEMENT FASTENER

The SCAMP is a premium quality fastener with a 5/16" Hex drive 304 stainless steel capped head ideal for replacing old worn, rusted or backing out fasteners. E.P.D.M. seal washers help to seal in a flat or angled installation. #12 is popular for the replacement of neo nails, #8 and #9 metal to wood fasteners. The #17 is popular for the replacement of #14 wood screws and #14 stitch lap fasteners. #14 SD is popular for the replacement of #8, #10 and #12 self drilling metal to metal fasteners. The new 5/16" diameter (3/8"H) self drilling fastener is used for replacing larger tapping and SD screws.



5/16"



#12

Wood Substrate	Qty/Box	Part# 250pcs/bag
#12 x 1"	2,500	DMI4SSC12100M
#12 x 1-1/2"	2,000	DMI4SSC12150M
#12 x 2"	1,500	DMI4SSC12200M
#12 x 2-1/2"	1,000	DMI4SSC12250M



#14

Metal to Metal up to 6 ga	Qty/Box
#14 x 1-1/4"	1,500
250/bag Part#	DMI4SSCSD314125M

Metal to Metal up to 6 ga	Qty/Box
5/16" x 1-1/4"	1,000
250/bag Part#	DMI4SSCSD3516125M

## ZAC™ TAPPER PREMIUM QUALITY REPLACEMENT FASTENER - #14 & #17

The ZAC Tapper is a premium quality fastener ideal for replacing old worn, rusted or backing out fasteners. ZAC lifetime warranty head and extra thick encapsulated E.P.D.M. seal washer help to seal in a flat or angled installation. #14 is popular for the replacement of neo nails, #9, #10 and #12 screws. #17 is popular for the replacement of #14 screws and #14 stitch lap fasteners. Metal to wood and metal to light gauge metal applications. 3/8" Hex drive on TP:A/AB, 5/16" AFH drive on SD3. All sizes available to be painted to match your panel color on request. Packaged 250 pcs/bag.



#14

Wood Substrate Applications	Type A /AB
Available Sizes	Qty/Box Part#
#14 x 1"	2,000 DMI2A4395FMF
#14 x 1-1/4" AB SO	2,000 DMI2A4428FMF
#14 x 1-1/2"	1,500 DMI2A4485FMF
#14 x 2"	1,000 DMI2A4513FMF
#14 x 2-1/2" SO	1,000 DMI2A4510FMF
#17 x 1"	1,500 DMI2A6045LFF
#17 x 1-1/2"	1,000 DMI2A8066LFF



#17

Self Drilling Metal to Metal Applications
Available Sizes Qty/Box Part#
#14 x 1-1/4" SD3 2,000 DMI2S5211FM
#14 x 1-1/2" SD2 2,000 DMI2S5287FM

## 304 STAINLESS STEEL - PREMIUM REPLACEMENT FASTENER #14

The combination of full 304 Stainless Steel with the DMG85 Silver coating and a 3/4" diameter cupped EPDM bonded washer provide the ultimate performance in a replacement fastener. The 3/8" drive HWCH cupped style head that cradles the cupped EPDM washer can be driven at multiple angles and still cover old fastener penetration holes. The #14 is popular for the replacement of neo nails, #9, #10 and #12 screws. Type A is for wood substrate applications and Type B is for metal substrate (predrill can be required for metal substrate, #8 bit). These fasteners also double as approved fasteners for our polycarbonate panel installations. Packaged 250 pcs per bag. Available in mill finish silver color only no painted fastener options.



Wood Substrate Applications (Type A)
Sizes Washer Qty/Box Part#
#14 x 1-1/2" 3/4" TPA 1,000 DMIREPL14150SSA
#14 x 2-1/2" 3/4" TPA 1,000 DMIREPL14250SSA

Steel Substrate Applications (Type B)
Sizes Washer Qty/Box Part#
#14 x 1-1/2" 3/4" TPB 1,000 DMIREPL14150SSB
#14 x 2-1/2" 3/4" TPB 1,000 DMIREPL14250SSB

## ECONOMY REPLACEMENT FASTENERS TAPPING & SD

Steel fasteners with zinc plating or VistaCoat Silver coating are available as an economical replacement fastener.

#14 WoodGrip Tapper- 5/16" HWH, bd-washer, coated, metal to wood application  
1/4-14 IMPAX - 5/16" HWH #3 drill point for metal to metal applications up to 6GA  
#17 Tapping Screw - 1" = #14 Stitch replacement, HWH, bd-washer coated

.343 Tapping Screw = T45 Torx button head Y zinc plated metal to metal, predrill required  
.351 Tapping Screw = 3/8" HWH Y zinc plated, metal to metal, predrill required

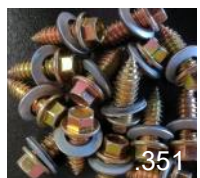
Tapping/MP Sizes	Qty/Box	Part#
#14 x 1"	2,500	DMI2V3321GBF
#14 x 1-1/2"	2,000	DMI2V3438GBF
#14 x 2"	1,500	DMI2V3531GBF
#14 x 2-1/2"	1,000	DMI2A3597GBF
#14 x 3"	1,000	DMI2A3626GBF
#17 x 1" MaxiS	2,500	DMI1063053
#17 x 1-1/2" BS -SE	1,500	DMI2A6060KJ
.343 x 7/8" Torx YZ	1,000	DMI21305074
(#21) .351 x 1" A/B	2,000	DMI8A357TZ



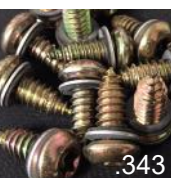
#14



#17



.351



.343

Self Drill Sizes	Qty/Box	Part#
1/4 x 1-1/4" SD3	2,000	DMI2S5201GBF
1/4 x 1-1/2" SD3	2,000	DMI2S5251GBF
1/4 x 2" SD3	2,000	DMI2S5351GBF

## SELF DRILLING METAL TO METAL FASTENERS

### 304 STAINLESS STEEL BI-METAL SELF DRILL

If you are looking for the highest in corrosion resistance in a self drilling screw look no further. The fused Bi-Metal self drilling point allows you to achieve the corrosion resistance of austenitic 304 stainless steel without having to pre-drill your fastener. Head and shank of the screw is 304 series stainless steel. A 25 year warranty against red rust on head and body of screw is available. The #12 fasteners have a 5/16 HWH drive, #14 have a 3/8" HWH drive. LSC spring clip drivers are suggested. Made in Czechoslovakia

Pull out (12-14)	Lbs Ultimate
12ga:1282	Shear: 2149
14ga: 908	Tensile: 2743
16ga: 703	Torsi 70 inlbs



HWH No Washer	Drill Point	Part#
1/4-14 x 1"	SD3	DMI21558126
1/4-14 x 1-1/2"	SD3	DMI21558128
1/4-14 x 2"	SD3	DMI21558129
1/4-20 x 1-1/8"	SD4	DMI21558132
1/4-20 x 1-1/2"	SD4	DMI21558133
1/4-20 x 2"	SD4	DMI21558134
1/4-20 x 2"	SD5	DMI21558130
1/4-20 x 4"	SD5	DMI21558131

HWH w/Bd-Washer	Qty/Box	Part#
#12 x 1-1/4" SD3	500	DMI21122767
#12 x 2-1/8" SD3	250	DMI21133684
#12 x 1-9/16" SD5	500	DMI20770785
#12 x 1" Stitch SD1	250	DMI21123164

### 316 STAINLESS STEEL #43 RIVETS

Blind rivets fasten joints without access to the reverse side of the sheet metal. DMI #43 painted stainless steel rivets are manufactured of our highest level of corrosion resistant 316 stainless steel. DMI 316SS rivets exceed the corrosion resistant standards put forth in Florida Building Code section 1506.6. DMI also Rivet length is measured to the end of the rivet body. A #43 rivet has a 1/8" diameter body with a 5/16" body length. Its grip range is material from .12" to .187" ( 1/8" - 3/16"). Available only in mill finish, 250 / bag



Painted SS	Qty/Box	Part#
#43 316SS	6,000	DMI43316SS

### #43 RIVETS

Blind rivets fasten joints without access to the reverse side of the sheet metal. DMI #43 painted stainless steel rivets are manufactured of corrosion resistant 302 / 304 stainless steel. DMI SS rivets exceed the corrosion resistant standards put forth in Florida Building Code section 1506.6. DMI also offers un-painted #43 rivets in 304 stainless steel, 316 stainless steel and copper/brass. Rivet length is measured to the end of the rivet body. A #43 rivet has a 1/8" diameter body with a 5/16" body length. Its grip range is material from .12" to .187" ( 1/8" - 3/16").



Painted SS	Qty/Box	Part#	Mill Finish Type	Qty/Box	Part#
#43 304SS	5000	DMI2L1290(color code)	#43 304SS	6,000	DMI2L1290C
			#43 316SS	6,000	DMI43316SS
			#43 Copper	6,000	DMI2L4300C

### Standard Colors SS Rivet for 250 Piece Per Bag Packaging:

Ash Gray 850, Black 507, Bright White 014, Burnished Slate 042, Caribbean Blue 012, Slate Gray/Charcoal 416, Cocoa Brown 110, Dark Bronze 324, Charcoal/Dark Gray 051, Evergreen 232, Forest Green 228, Gallery Blue 843, Light Stone 248, Medium Bronze 537, Metallic Champagne 1160, Metallic Copper 1116, Metallic/Nevada Silver 1161, Preweathered Galvalume/Zactique 1162, Mill Finish, Old Town Gray 578, Patina Green 508, White 001, Red 890, Tan 020, Terra Cotta 928.

### Standard Colors SS Rivet for 100 Piece Per Bag Packaging: :

Almond 330, Black 507, Bright White 014, Colonial Red 074, Dark Bronze 324, Evergreen 232, Mansard Brown 1111, Medium Bronze 537, Mill Finish, Pearl Gray 302, Sand Beige 109, Slate Gray 091.





## WEDGE ANCHOR BOLTS

Used for anchoring points in concrete slab construction. Wedge anchor bolts with zinc plating. Assembled with nut and washer. Anchor diameter equals hole diameter. Comes complete with nut and washer ready to use. Collar expander offers optimum contact with masonry. Projections on collar immediately grip concrete. Collar design expands on first turn of the nut. High quality import. Standard parts are Zinc plated carbon steel but these parts are available by special order in 303 or 316 Stainless Steel.

Stock Sizes	Qty/Box	Part#
1/2" x 5-1/2"	125	DMI4A12512Z
1/2" x 7"	125	DMI4A12700Z
5/8" x 4-1/2"	100	DMI4WA58412Z
5/8" x 5"	100	DMI4WA58500Z
5/8" x 6"	100	DMI4WA58600Z
5/8" x 8-1/2"	100	DMI4WA58812Z
5/8" x 10"	40	DMI4WA581000Z
3/4" x 8-1/2"	40	DMI4WA34812Z



## HEX NUT WEDGE SLEEVE ANCHORS

Exact hole depth not required to set anchor. Required hole size equals sleeve diameter. Anti-rotation sleeve slots provide for spin free anchor installation. Can be used in solid or hollow masonry materials. Standard parts are Zinc plated carbon steel but these parts are available by special order in 303 Stainless Steel.

Stock Sizes	Qty/Box	Part#
1/2" x 6"	125	DMI4SA12600Z
5/8" x 4-1/4"	100	DMI4SA58414Z
5/8" x 6"	100	DMI4SA58600Z

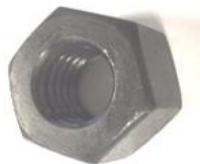
S.O. Sizes	Part#
1/2" x 3"	DMI4SA12300Z
1/2" x 4"	DMI4SA12400Z
3/4" x 2-1/4"	DMI4SA34250Z
3/4" x 4-1/4"	DMI4SA34414Z
3/4" x 6-1/4"	DMI4SA34614Z



## A325 STRUCTURAL HEX BOLTS AND NUTS

High strength A 325 Structural bolts for metal building construction. Standard A325 bolts and nuts are plain black and sold in full box / keg quantities only. E Zinc or HDG galvanized bolts available by special order.

A325 Hex Bolt Plain Sizes	Qty/Keg	Part#
1/2" x 1 1/4"	1710	DMI4A312114
5/8" x 1 3/4"	900	DMI4A358134
5/8" x 2-1/4"	750	DMI4A358214
3/4" x 2"	550	DMI4A334200
3/4" x 2-1/4"	500	DMI4A334214
3/4" x 2-1/2"	270	DMI4A334212



Heavy Hex Nut Plain Sizes	Qty/Box	Part#
1/2"	750	DMI4HNO50CA325
5/8"	400	DMI4HNO625CA325
3/4"	250	DMI4HNO75CA325

Structural Disc Flat Washer Zinc or Plain Sizes	Qty/Box	Part#
1/2" ID x 1"	1,000	121WZP
5/8"	400	DMI4HNO625CA325
3/4"	250	DMI4HNO75CA325

## CABLE BRACING KITS

Structural reinforcement cable bracing kits. Kits come complete with welded eyebolt, nut, hillside washer, and flat washer. Most kits are plated or coated for additional corrosion protection.

Available Sizes	Qty/Box	Part#
1/2" x 8"	50	DMI3CC128ZP
5/8" x 8"	50	DMI6CC588ZP
3/4" x 8"	25	DMI3CC349XX
1" x 8"	25	DMI3CC109XX



## BRACE-GRIP™ CABLE GRIP DEAD ENDS

- Develops 100 percent or more of the published rated breaking strength of the strand for which it was designed.
- Lighter, easier to handle
- Stranded steel cable offers greater tensile strength than an equivalent sized threaded rod
- Reduces costs by cutting installation time
- Eliminates the need for costly machinery
- Easily applied - no special tools needed
- No cutting or preparation



Available Sizes	Qty/Box	Part#
1/4"	50	DMI5BGS14
5/16"	50	DMI5BGS516
3/8"	50	DMI5BGS38
1/2"	25	DMI5BGS12



## Looking for 304 STAINLESS STEEL SELF DRILLING FASTENERS? PLEASE SEE OUR BI-METAL FASTENERS ON PAGE MB 04.

### STEELZIP HWH ECONO SELF DRILLING FASTENERS ZINC PLATED

Self drill fasteners for metal to metal applications such as ductwork assembly, metal framing, gusset plate and steel tube fastening. The SteelZIP Econo line of self drilling fasteners are imported from Taiwan and have a zinc plating. Available in mill finish only. Available for order in full box quantities only.

#### Hex Head (HWH) Light to Medium Gauge

Size	Point	Qty/Box	Part#
#8 x 1/2"	SD2	10,000	DMI4HWKZ08012
#8 x 3/4"	SD2	10,000	DMI4HWKZ08034
#10 x 3/4"	SD3	6,000	DMISDNH10034
#10 x 1"	SD3	5,000	DMI4HWKZ10100
#10 x 2"	SD3	2,000	DMI4HWKZ10200
#12 x 3/4"	SD3	5,000	DMI4HWKZ12034
#12 x 1"	SD3	3,000	DMI4HWKZ12100
#12 x 1-1/2"	SD3	3,000	DMI4HWKZ12112
#14 x 1"	SD3	3,000	DMI4HWKZ14100
#14 x 1-1/4"	SD3	2,000	DMI4HWKZ14114
#14 x 2"	SD3	1,000	DMI4HWKZ14200

#### Heavy Ga Applications up to 1/2" thick steel

Size	Point	Qty/Box	Part#
#12 x 1-1/4"	SD5	2,000	DMI4HWKZ121145
#12 x 1-1/2"	SD5	2,000	DMI4HWKZ121125
#12 x 2"	SD5	2,000	DMI4HWKZ122005

Fastener	Pull out Ultimate 16ga
#8	705
#10	786
#12	842
#14	910



### STEELZIP CTD & IMPAX SD COATED HWH SELF DRILLING SCREWS

Used for attachment of metal to metal applications such as steel framing and hat channel and metal deck attachment. Similar to the SteelZIP Econo self drill fasteners with the added corrosion protection of thicker galvanizing and VistaCoat or DMG85 corrosion resistant coatings. Most sizes of coated fasteners also come bagged in 250 count bags for easy distribution. B=Bulk

#### Hex Head (HWH) Light to Medium Gauge

Size	Point	Qty/Box	Part#
#8-16 x 3/4"	SD2	10,000 B	DMISDNHC834
#10-16 x 3/4"	SD3	5,000	DMI2793362
#12-14 x 1"	SD3	2,500	DMI2794234
#12-14 x 1-1/4"	SD3	2,500	DMI2795053
#12-14 x 1-1/2"	SD3	2,500	DMI2796234
#12-14 x 2"	SD3	2,000	DMI2796909
1/4-14 x 7/8"	SD1	2,500	DMI2797805 Stitch
1/4-14 x 1"	SD3	2,500	DMI2798553
1/4-14 x 1-1/4"	SD3	2,000	DMI2798810
1/4-14 x 1-1/2"	SD3	2,000	DMI2798973
1/4-14 x 3" R	SD3	1,000	DMI4SDNHC14300R

#### Hex Head (HWH) Heavy Gauge up to .500"

Size	Point	Qty/Box	Part#
#12-24 x 1-1/4"	SD5	2,500	DMI2795839
#12-24 x 1-1/2"	SD5	2,500	DMI2796618
#12-24 x 2"	SD5	2,000	DMI2783126
1/4-20 x 3"	SD5	1,000B	DMI21356393
1/4-20 x 4"	SD5	1,000B	DMI21356395
1/4-20 x 5"	SD5	600 B	DMI21356396
1/4-20 x 6"	SD5	500 B	DMI21356398
1/4-20 x 7"	SD5	500 B	DMI21356399
1/4-20 x 8"	SD5	500 B	DMI21356400



### TEKS Brand FM, UL & ICC Approved MetalDeck Attachment Drill Screws

Used for attachment of metal deck to Steel applications on jobs that require UL or FM compliance. These TEKS fasteners come bulk packaged. Most sizes Made in the USA and have Climacoat silver coating.

Size	Point	Qty/Box	Part#
#12-24 x 1-1/4"	TEK5	2,500	DMI1006053
#12-24 x 1-1/2"	TEK5	2,000	DMI1070053
1/4-28 x 3"	TEK5	1,000	DMI1074000
1/4-28 x 4"	TEK5	500	DMI1075000
1/4-28 x 5"	TEK5	250	DMI1641000
1/4-28 x 6"	TEK5	250	DMI1431000
1/4-28 x 8"	TEK5	150	DMI1590000
#10-16 x 3/4"	TEK1	5,000	DMI1107053
#10 x 3/4" is for deck to deck stitch/lap.			



### PANCLIP-SD LOW PROFILE HEAD SELF DRILLING MTM

Panclip low profile pancake head mated to a self drilling drill point for drill and tap performance into metal and steel substrates. PANCLIP-SD features the 1000hr DMG85 silver coating to meet FBC1506.6 and other corrosion resistance requirements. Select sizes are also available in 410SS with DMG85 corrosion resistant coating. Packaged in 250 count bags.

#### PANCLIP SD - DMI CS SILVER COATED

Available Sizes	Qty/Box	Part# 1000hr
#10-16 x 1"	SD2 5,000	DMIPD210100C
#10-16 x 1-1/2"	SD2 2,500	DMIPD210150C
#12-14 x 1"	SD3 5,000	DMIPD312100C
#12-14 x 2"	SD3 2,000	DMIPD312200C
1/4-20 x 1-1/2"	SD4 2,500	DMIP414150TC
1/4-20 x 5"	SD4 1,000	DMIP414500TC
1/4-20 x 7"	SD4 1,000	DMIP414700TC

#### PANCLIP SD-SS 410SS Stainless + DMG85

Available Sizes	Qty/Box	Part# 1000hr
#10-16 x 3/4"	SD3 5,000	DMIP41075DC
#10-16 x 1"	SD3 5,000	DMIP41010DC
#12-14 x 2"	SD3 2,000	DMIP41220DC





**PANCLIP-SD** for applications that require a low profile head with large flat under head load bearing surface. The Panclip head combines a larger clamping surface than a PFH fastener and a lower profile than a HWH or hex head fastener. Designed primarily for the installation of standing seam metal roofing panel clips. The Panclip also has many other applications such as window, door, fixture, liner panel, cladding and siding panel installations. Panclip SD fasteners are for metal substrate applications, Panclip SDL fasteners are for wood or light gauge metal applications.

## PANCLIP-SD-L SELF DRILLING MTM Light gauge applications up to 16 ga

#14-13 Panclip fastener designed for clip, nailbase and fixture attachment to metal decking from 22 ga to 16 ga in thickness. The Panclip SD-L features the DMG85 black coating that meets FBC and MDC corrosion resistance requirements. Panclip SDL has a #2 square drive and precision drill point. Bulk packaged.



### PANCLIP SD-L COATED BLACK B=BULK

Available Sizes	Qty/Box	Part#
#14 x 1-1/2"	2,500	DMIPL1415D
#14 x 3"	2,000 B	DMIPL1430D
#14 x 4"	1,000 B	DMIPL1440D
#14 x 5"	1,000 B	DMIPL1450D
#14 x 6"	1,000 B	DMIPL1460D
#14 x 7"	1,000 B	DMIPL1470D
#14 x 8"	500 B	DMIPL1480D



#L16-0706.03 (DMIPL1415D)

## PANCLIP-SD SELF DRILLING MTM Medium gauge applications .036"-.210"

Panclip low profile pancake head mated to a self drilling drill point for drill and tap performance into metal and steel substrates. PANCLIP-SD features the 1000hr DMG85 silver coating to meet FBC1506.6 and other corrosion resistance requirements. Packaged in 250 count bags.



### PANCLIP SD - DMI SILVER COATED P2/S2

Available Sizes	Qty/Box	Part# 1000hr
#10-16 x 1" SD2	5,000	DMIPD210100C
#10-16 x 1-1/2" SD2	2,500	DMIPD210150C
#12-14 x 1" SD3	5,000	DMIPD312100C
#12-14 x 2" SD3	2,000	DMIPD312200C

SD2 and SD3 point fasteners are designed to self drill and tap into metal substrates from 22ga up to 8 ga steel.

## #12-24 PANCAKE HEAD PURLIN FASTENERS

Designed for installation of insulation and membrane stress plates. For attachment to steel purlins from 12 ga to 3/16" in thickness. #12 diameter, 24 threads per inch, #3 square drive. Black Senti XP coating. 3/4" of the length of this fastener is unthreaded and drill bit.



Available Sizes	Qty/Box	Part#
#12 x 3-3/4" SQ#3	1,000	DMI2C4325995B
#12 x 4-3/4" SQ#3	1,000	DMI2C4335995B
#12 x 5-3/4" SQ#3	1,000	DMI2C4345995B
#12 x 6-3/4" SQ#3	500	DMI2C4355995B

Bulk packaged (not bagged)

## PANCLIP-SD #14 HD SELF DRILLING MTM Heavy gauge/purlin applications .12"-.250"

Panclip low profile pancake head designed for installing panel clips, fixtures and stress plates into steel substrates. PANCLIP-SD HD features a SD4 heavy drill point and square drive #3 for driving stability. Fully coated with DMG85 FBC 1506.6/MDC Coating, packaged 250 pcs / bag.



### PANCLIP SD4 HD - DMI SILVER COATED SQ3

Available Sizes	Qty/Box	Part# 1000hr
1/4-20 x 1-1/2"	2,500	DMIP414150TC
1/4-20 x 5"	1,000	DMIP414500TC
1/4-20 x 7"	1,000	DMIP414700TC

SD4 point fasteners are designed to self drill and tap into metal substrates from 12ga up to 1/4" thick steel beams.

## PANCLIP-SD-SS-L STAINLESS STEEL MTM Light gauge applications up to 18 ga

#14-13 Stainless Steel fastener designed for clip, nailbase and fixture attachment to metal decking from 22ga to 18ga in thickness. The Silver DMG85 coating provides a high level of corrosion & dissimilar metal reaction resistance. Panclip SD-SS-L comes bulk packaged and has a #2 square drive. DMG85 coated 410 Stainless steel exceeds 1506.6 & MDC standards.



### PANCLIP SD-SS-L 410SS CTD BULK

Available Sizes	Qty/Box	Part#
#14 x 1-1/2"	2,500	DMIP41415D
#14 x 3"	1,000	DMIP41430D
#14 x 5"	500	DMIP41450D
#14 x 7"	500	DMIP41470D

## PANCLIP-SDSS 410 STAINLESS STEEL MTM Medium gauge applications .036"-.210"

Panclip low profile pancake head with full 410 stainless steel construction and the DMG85 silver coating for resistance to dissimilar metal reaction and corrosion. Designed for clips and fixtures attachment to medium gauge steel substrates. #2 Square Drive. Packaged 250 pcs / bag.



### PANCLIP SD-SS 410SS CTD SQ2 250/BAG

Available Sizes	Qty/Box	Part#
#10-16 x 3/4" SD3	5,000	DMIP41075DC
#10-16 x 1" SD3	5,000	DMIP41010DC
#12-14 x 2" SD3	2,000	DMIP41220DC



#L15-0518.08

# **SNAP LOCK STANDING SEAM METAL PANEL CLIPS**

## **DMI SNAPLOCK PANEL CLIPS**

Designed for secure fastening of snap lock style standing seam/concealed fastener metal roofing systems. Most styles available in G-90 galvanized or stainless steel. Panel clips can be manufactured to fit panels from most brands and styles of roll forming machines. Please specify make and model of machine when ordering. Most styles are designed with built in fastener relief to help eliminate panel dimpling. Made in the U.S.A. (full box orders only)



**1-3/4" Snaplock Ultra Length HD**  
Fits 1-3/4" Snaplock Panels (1-7/8")  
fits Quadro, RF, Newtech 675, D175S  
Knudson & ES2000, US 175  
18 ga steel or SS, 2 hole, 3-1/2" width  

Gauge	Qty/Box	Part#
18G Galv	250	CSN134312G18V
18G SS	250	CSN134312S18V



**1-1/2" Snaplock Ultra Length QSL HD**  
Fits 1-1/2" Snaplock Panels  
fits Quadro & E 1500  
18 ga steel or SS, 2 hole, 3-1/2" width  

Gauge	Qty/Box	Part#
18G Galv	125	CSN112312G18Q
18G SS	250	CSN112312S18Q



**1-3/4" Snaplock Econo Clip**  
Fits 1-3/4" Snaplock Panels (1-7/8")  
fits Quadro, Rollformer, Newtech 675,  
Knudson, Zimmerman & E US 175  
18 ga steel or SS, 3 hole, 2-1/4" width  

Gauge	Qty/Box	Part#
18G Galv	400	CSN134214G18
18G SS	400	CSN134214S18



**1-1/2" Snaplock Econo QSL**  
Fits 1-1/2" Snaplock Panels  
fits Quadro & E 1500  
20 ga steel or SS, 3 hole, 2-1/4" width  

Gauge	Qty/Box	Part#
20G Galv	500	CSN112214G20Q
20G SS	500	CSN112214S20Q



**1-1/4" Snaplock Econo QSL**  
Fits Utility Panels, fits Quadro  
24 ga steel 2" width  

Gauge	Qty/Box	Part#
24G Galv	600	CSN11420G24QSL



**1-1/2" Snaplock NT550 HD Clip**  
Fits Newtech 550  
20 ga steel or SS, 2 hole, 3-1/2" width  

Gauge	Qty/Box	Part#
20G Galv	300	CSN112916G20NHD
20G SS	300	CSN112916S20NHD



**1" Zimmerman SL1000**  
Fits 1", 1-1/2" Zim Snaplock Panels  
24 ga steel or 304SS, 2 hole, 3" width  

Gauge	Qty/Box	Part#
24G Galv	500	CSN112916G24Z
24G SS	500	CSN112916S24Z



**1-1/2" Snaplock Newtech 450 NDF**  
Fits Modified 450 panel, no fastener relief  
dimples and flat tongue.  
Fits Newtech 450 and EA1000, D450  
24 ga steel or SS, 2 hole, 2" width  

Gauge	Qty/Box	Part#
24G Galv	600	CSN11420G24UNDF
24G SS	600	CSN11420S24UNDF



**1" Snaplock Rollformer Corp Clip**  
Fits 1" Snaplock Panels  
Fits Rollformer  
22 ga steel or 304SS, 2 hole, 2" width  

Gauge	Qty/Box	Part#
22G Galv	1000	CSN100200G22RF
22G SS	1000	CSN100200S22RF



**1-1/4" Snaplock Utility 450 LD Clip**  
Fits " Snaplock Econo Panels  
Fits Newtech 450 and EA1000, D450  
24 ga steel or SS, 2 hole, 2" width  

Gauge	Qty/Box	Part#
24G Galv	600	CSN11420G24U
24G SS	600	CSN11420S24U

**DMI BATTEN CLIPS** - Batten Clip with dog ears. Pre-folded for easier installation. Popular for radius battens. Made in the U.S.A. (full box orders only)

**DMI UNIVERSAL BEARING PLATES** - Create a load bearing surface for panel clips overtop of insulation boards. Made in the U.S.A. (full box orders only)



**Batten Seam Clip**  
24 Galv or Stainless, 2 hole, 2" width  
11/16" Down leg, Pre-folded, Dog Ears  

Size	Gauge	Qty/Box	Part#
1"	24G Galv	1000	CBC1020G24
1"	24G 304SS	1000	CBC1020S24



**Universal 4" x 5" slotted**  

Size	Gauge	Qty/Box	Part#
4" x 5"	20ga G90	250	UBP4620G
4" x 5"	20ga 304SS	250	UBP4520S



## DMI MECHANICAL LOCK PANEL CLIPS

Designed for secure fastening of mechanical lock style standing seam / concealed fastener metal roofing systems. Most styles available in G-90 galvanized, painted steel or stainless steel. Panel clips can be manufactured to fit panels from most brands and styles of roll forming machines. Please specify make and model of machine when ordering. Made in the U.S.A. (full box orders only). Most styles are engineered to give fastener relief, and heights of clips are listed in panel height. 1" tall panel would use 1-1/8" tall clip, 1-1/2" panel would use 1-5/8" clip, etc.



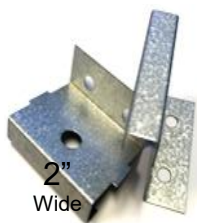
**1" Mechanical Lock (1-1/8")**  
7/16" Top fits RF, NT, KN, D100SS, EA1301, Galv or SS, 2 hole, 2" width  

Gauge	Qty/Box	Part#
26G Galv	1,000	CMF1002716G26
24G SS	1,000	CMF1002716S24
26G SS	1,000	CMF1002716S26



**1-1/2" Mechanical Lock (1-5/8")**  
7/16" Top fits RF, NT, KN, EA1300, D150SS Galv or Stainless, 2 hole, 2" width  

Gauge	Qty/Box	Part#
24G Galv	1,000	CMF1502716G24
24G SS	1,000	CMF1502716S24 S.O.
26G Galv	1,000	CMF1502716G26
26G SS	1,000	CMF1502716S26



**1-1/2" Mechanical Lock NFR(1-1/2")**  
7/16" Top fits Z1500, KR12, EA1300 US 1505, D150SS 2 hole, 2" width  
NFR= No built in fastener relief this 1-1/2" panel clip is 1-1/2" in height.  

Gauge	Qty/Box	Part#
26G Galv	1,000	CMF1372716G26



**1-1/2" Mechanical Lock HD (1-5/8")**  
7/16" Top fits Z1500, EA1300, KR24, RF, US 1505 D150SS, 2or 3 hole, 3" width  

Gauge	Qty/Box	Part#
24G Galv	500	CMF1503716G24
24G SS	500	CMF1503716S24



**2"(2-1/8") Newtech Mechanical Lock**  
3/4" Top fits RF, NT Ultraseam, Knudson, E, 3 hole, 3" width.  

Gauge	Qty/Box	Part#
24G Galv	600	CMF218334G24
24G SS	300	CMF218334S24 S.O.
22G Galv	600	CMF218334G22
22G SS	300	CMF218334S22 S.O.



**2" Quadro Mechanical Lock**  
5/8" Top fits Quadro 3 hole, 3" width.  

Gauge	Qty/Box	Part#
24G Galv	300	CMF218358G24 S.O.
24G SS	300	CMF218358S24 S.O.
22G Galv	300	CMF218358G22 S.O.
22G SS	300	CMF218358S22 S.O.

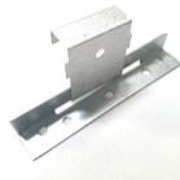
## EXPANSION CLIPS FOR MECHANICAL LOCK PANEL CLIPS

Designed to allow for thermal expansion while providing secure fastening of mechanical lock style standing seam / concealed fastener metal roofing systems. The expansion style clips are available in 3 different styles one piece pre-assembled style, a two piece job site assembled and a butterfly style two piece job site assembled (Butterfly style is by special order only). Most styles available in G-90 galvanized.



**2" Newtech One Piece Expansion**  
3/4" Top fits Newtech Machines 2 hole, 4-3/8" width  
No Assembly Required.  
Galvanized G90 Top 22ga, Base 16G.  
Stainless 304S Top 24ga, Galv Base 16G

Type	Qty/Box	Part#
Galvanized	100	CMEMLG200NT
Stainless	100	CMEMLS200NT



**2" Newtech Two Piece Expansion**  
3/4" Top fits Newtech Machines 5 hole, 5 base width. This 2 piece clip requires field assembly. Each piece top and bottom sold separately.  

Gauge	Qty/Box	Part#
Top 24G	1000	CMT2003416G24
Base 18G	500	CMB500G18



**2" Quadro One Piece Expansion**  
5/8" Top fits Quadro Machines 2 hole, 4-3/8" width.  
No Assembly Required.  
Galvanized G90 Top 22ga, Base 16G.  
Stainless 304S Top 24ga, Galv Base 16G

Gauge	Qty/Box	Part#
Galvanized	100	CMEMLG200QP
Stainless	100	CMEMLS200QP



### 1-1/2" Butterfly Style Expansion

2 hole, 4-3/8" width, Assembly Required. This product is produced to order, and is available in different gauges and materials. Consult your salesperson for options.

**1-1/2" One Piece Expansion**  
fits Quadro & Newtech Machines 2 hole, 4-3/8" width, Assembly Required. Galvanized G90 Top 22ga, Base 16G. Stainless 304S Top 24ga, Galv Base 16G  

Gauge	Qty/Box	Part#
Galvanized	100	CMEMLG150
Stainless	100	CMEMLS150

## Translucent Panel Accessories



### TRANSLUCENT POLYCARBONATE RIDGE CAP

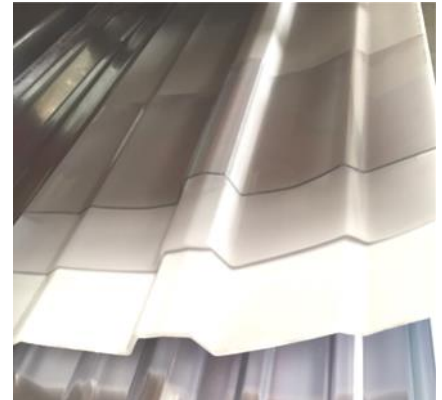
Polycarbonate ridge cap is installed on the ridge or peak of building roofs in place of a standard metal ridge cap trim. Polycarbonate panels allow architects and building owners to take advantage of one of Mother Natures best free resources, daylight. DMI distributors offer polycarbonate translucent ridge caps in two thicknesses to complement popular corrugated metal or polycarbonate roofing panel profiles. All caps come 10'6" x 23.5" wide with a top hat profile.

#### DMI 1.0 mm Translucent Polycarbonate Ride Cap

Standard 1.0mm PC ridge cap is available in clear or opal white, bronze by special order.

#### DMI 2.0mm MEGA Translucent Polycarbonate Ridge Cap \*\* New \*\*

The stronger big brother to our standard cap offerings. It is twice as thick as our standard allowing this cap to span ridge openings without the extra use of a centerline brace. Available in clear only and ships from our Midwest Service Center.



#### POLYCARBONATE PANEL TO WOOD STAINLESS STEEL SCREW

Full 304 Stainless Steel protection with the added protection of DMG85 coating. Special 3/4" diameter cupped style washer for standard applications to wood substrates. Designed to meet DMI and Sunsky installation guidelines. Pre-drill of polycarbonate panel required.

Available Sizes	Qty/Box	Part#
14 x 3/4" TPA 3/4C	1,000	DMIREPL14034SSA
14 x 1-1/2" TPA 3/4C	1,000	DMIREPL14150SSA
14 x 2-1/2" TPA 3/4C	1,000	DMIREPL14250SSA
250 PIECES PER BAG		



#### POLYCARBONATE PANEL TO STEEL STAINLESS STEEL SCREW

Full 304 Stainless Steel protection with the added protection of DMG85 coating for resistance to dissimilar metal reactions in aluminum substrates. Special 3/4" diameter cupped style washer for standard applications to steel substrates. Pre-drill substrate and panel.

Available Sizes	Qty/Box	Part#
14 x 1-1/2" TPB 3/4C	1,000	DMIREPL14150SSB
14 x 2-1/2" TPB 3/4C	1,000	DMIREPL14250SSB
250 PIECES PER BAG		



#### POLYCARBONATE PANEL TO STEEL FBC FASTENER

Oversized #14 fasteners with an oversized 1.125" diameter washer. This fastener is for installation of polycarbonate panels to light to medium gauge metal substrate up to 8 ga steel to meet Florida Building Code Approval installation guidelines. Pre-drill of polycarbonate panel required.

Available Sizes	Qty/Box	Part#
1/4-14 x 1-1/2" SD3	750	DMI3PC112LW
250 PIECES PER BAG or by the piece		



#### POLYCARBONATE PANEL TO PC PANEL OR STEEL PANEL TO PC PANEL OVERLAP FASTENER - SS GROMMET SEAL

Stainless Steel 304 with EPDM grommet. Used for panel overlaps of polycarbonate and fiberglass panels. Hex head machine screw with rubber grommet that seals around top and bottom of panel penetrations. Predrill required for installation.

Sizes	Qty/Box	Part#
1/4" x 1"	2500	DMI210F100NWESN
3/8" X 7/8"	Each	DMI23810PG Available painted



#### BUTYL\*ROLL BUTYL TAPE SEALANT FOR PANEL SEALING

Available in various sizes supplied in ready-to-use rolls. For sealing gaps between polycarbonate panels and uneven metal panels around perimeter of skylights. Approved by DMI and Palram for use on MEGA, SUNSKY & SUNTUF panels.

Available Sizes	Qty/Box	Part#
3/16 x 7/8" x 25' MTB	14	DMBT31678M
3/32 x 3/8" x 45' SB	40	DMBT3323845
3/32 x 1" x 45' SB	20	DMBT332145
3/16 x 2-1/2" x 20' TB	6	DMBT3162122



#### POLY-GLAZE™ PLUS CLEAR SILICONE SEALANT

SM5731 Poly-Glaze™ Plus Silicone is a one component, medium modulus, non-corrosive, neutral cure translucent silicone sealant. Primarily used to seal poly to poly and poly to steel panel joints. It has been tested and approved by DMI and Palram for use on MEGA, SUNSKY & SUNTUF panels.

Available Sizes	Qty/Box	Part#
10.1oz tube Translucent	30	DMSM5731C



#### DRILL BITS SIZED FOR POLYCARBONATE INSTALLATION

These two drill bits are required for proper installation of the above fasteners. A 3/8" diameter drill bit to create the proper clearance hole for our commercial grade polycarbonate sheets. The 7/32" bit is used for predrill of #14 SS type B SS fasteners into steel purlins.

Available Sizes	Part#
7/32" x 2.5" Metal bit	DMI9SWSN7/32
3/8" x 4" Poly bit	DMI9DB384



#### Fall Protection Screen

Florida Building Code approved Fallguard Skylight Safety Screen kit. 3'9" x 11'4" with hat channel support. Provides passive protection and is easy to install. Outside plastic ring and hat channel are included for a safe and clean installation.

Model	Qty/Box	Part#
Model F-310	1	FGF310



## CARPORT & PORTABLE BUILDING FASTENERS / BONDED WASHERS

### ECONO CARPORT SCREW #12-14 x 3/4"

Commonly used in price conscious panel to steel tube and framing applications such as carport and portable building manufacturing. 5/16" HWH, bonded sealing washer and #3 drill point. Full Zinc plating for light corrosion resistance. Bulk packaged 4000 pcs/box, 36 boxes per pallet or head painted 2500/box.



Color	Qty/Box	Part#
Mill/Zinc/Silver	4000	DMI4HWKZ12034WZP
Bright White 014	2500	DMI312B100DMCOPS014
Burnished Slate042	2500	DMI312B75DMC0PS042
Evergreen 232	2500	DMI312B75DMC0PS232
Light Stone 248	2500	DMI312B75DMC0PS248
Red 890	2500	DMI312B75DMC0PS890
Tan 020	2500	DMI312B75DMC0PS020
White 348	2500	DMI312B75DMC0PS348

### SIDEWALL UNWASHERED SCREW

Commonly used in sidewall paneling to wood or stitch applications.



#### #8ZIP Screws Sharp Point 1/4" HWH

Size	Color	Qty/Box	Part#
#8 x 1/2"	White	100/12500	DMI4812HZPW
#8 x 1/2"	Brown	100/12500	DMI4812HZBN
#8 x 3/4"	Silver	10,000	DMI4834HZSIL
#8 x 1-1/2"	Silver	5,000	DMI48150HZSIL
#10 x 3/4"	L.Stone	250/5000	DMI2A1041248F
#10 x 3/4"	Tan	250/5000	DMI2A1041020F
#10 x 3/4"	P.White	250/5000	DMI2A1041001F

### MISCELLANEOUS BUILDING HARDWARE

Size	Description	Qty/Box
3/8" x 3"	Carriage Bolt ZP	400
3/8"	Hex Lock Nut ZP	4000
3/8" x 1"	Flat Washer ZP	3350
1/2" x 1"	Hex Machine Bolt GR5 ZP	500
1/2" x 4"	Hex Machine Bolt GR5 ZP	1200
1/2" x 4-1/2"	Hex Machine Bolt GR5 ZP	1000
1/2" x 5"	Hex Machine Bolt GR5 ZP	150
1/2"	Hex Nut ZP	1250
1/2" x 1.3"	Flat Washer ZP (50lbs)	1300
1/2" x 5-1/2"	Wedge Anchor Bolt ZP	125
2" x 2"	90deg 4 Hole Reinforcement Plate ZP	500
4" x 2"	Flat 4H Reinforcement Plate ZP	500

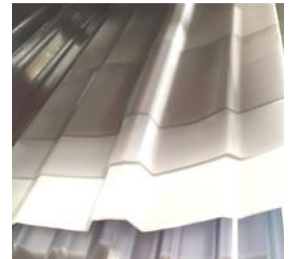
ZP = Electro-Zinc Plated



Insulation  
See Page  
32



Translucent Cap  
See Page 29



### BONDED WASHERS

For weather sealing of standard #9, #10, #12 or #14 (1/4") diameter fasteners and fixtures. Standard washers are a galvanized metal disc bonded to non conductive E.P.D.M. rubber. Also available for order is a stainless steel (304SS) metal disc bonded to non conductive E.P.D.M. rubber. Conical design directs flow of facing materials to form a seal conforming to both fastener and sealing surface. All sizes available for order in full carton quantities only. Many other sizes from #4 ID up to 1" I.D available on request. Made in North America B.A.P.



Size I.D x O.D	Qty/Box	Part#
Bonded Galvanized Disk, Black E.P.D.M. Rubber		
#9/10 x 9/16"	20,000	DMIL10916GBW
#14 x 7/8"	4,000	DMI4GJE087027X
#14 x 2"	1,000	DMLGJE2000027X

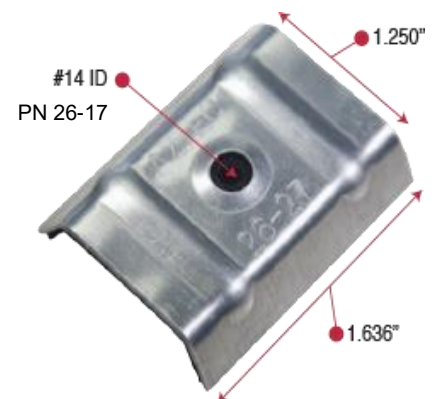
Bonded Aluminum Disk, Black E.P.D.M. Rubber		
#9/10 x 14mm	10,000	DMIL10916ABW

Bonded Stainless S Disk, Black E.P.D.M. Rubber		
#14 x 5/8"	7,500	DMLSJE062027X
#14 x 7/8"	4,000	DMLSJE087027X
#14 x 1-1/8"	2,500	DMSJE112027X
#14 x 1-1/2"	1,000	DMLWSS14112
#14 x 2-1/2"	500	DMLSJN250027X
.330 x 1-1/2"	1,000	DMLSJE150033X

Full carton orders only on all sizes.

### SADDLE WASHERS

A saddle washer is used for fastening of roof coverings in conjunction with either screws or bolts. It is used as a crown fixing and is placed on top of the corrugations or ribs. The type/shape should be chosen to fit the profile of the metal rib. Our saddle washers possess extraordinary elasticity and memory when cushioning and vibration control are needed. High quality EPDM vulcanized to .040" thick aluminum. Full carton orders only, expect 1 week lead time. 5/16" & 3/8" I.D. available on req. Find available sizes and dimensions at [http://directmetalsinc.com/dm\\_product/bonded-washers-and-saddle-washers/](http://directmetalsinc.com/dm_product/bonded-washers-and-saddle-washers/)



## SAMMYS™ SUSPENSION ANCHORS FOR STEEL

Used for hanging threaded rod to structural steel substrates. Used in the installation of fire suppression systems, A/C ducts, lighting and more. Direct attachment provided by Sammys reduces installation and material cost by using only one product to hang threaded rod. No pre-drilling required. UL listings and FM approvals parts are available. A wide range of fasteners for steel thicknesses ranging from 20 gauge to 1/2" thicknesses are available for 1/4", 3/8", 1/2" threaded rod.

Swivel Sammys eliminates distortion of threaded rod in sloped roof applications, installs into angled Z purlin and allows threaded rod to hang plumb. Made in the USA. 125/Cartron

## Vertical - Steel 125/Cartron

Standard Model	Rod Size	Part#	Driver
1-1/4" DST516	3/8"	DTS8045957	BLA
1-1/4" DSTR516	3/8"	DTS8039957	BLA w/nut

1/4" and 1/2" Rod parts available by special order.



## Sidewinder - Steel 125/Cartron

Standard Model	Rod Size	Part#	Driver
1-1/4" SWDR516	3/8"	DTS8056957	RED
1-1/4" DSTR516	3/8"	DTS8039957	BLA w/nut

1/4" and 1/2" Rod parts available by special order.



## Swivel Head - Steel 125/Cartron

Standard Model	Rod Size	Part#	Driver
1" SH-DSTR 1"	3/8"	DTS8137957	BLA

1/2" Rod parts available by special order. Swivel Head is a special order item.



## PREMIUM WOOD TO METAL FASTENERS

**XLP WTM SD3** with extra low profile pancake wafer head for installing plywood, OSB, MDF and dimensional lumber to metal deck and steel up to 14 ga in thickness. Special white DMG85 full coating for corrosion protection.

**WTM SD4** is designed to install dimensional lumber (2x) to steel substrates up to 1/4" thick. Breakaway wings and countersink head allows for a flush surface after installation. Green DMG85 coating is designed for use with pressure treated lumber. 250/bag



XLP WTM to metal up to 6 ga SQ2, SD3 White  
Available Sizes Qty/Box Part# (250/bag)  
#10-16 x 1-7/8" 2,500 DMIXLP101780S3  
Popular for plywood & OSB decking or 1"x4" dimensional lumber to metal deck or purlins.

WTM from 14 ga to 1/4" SQ3, SD4 Green  
Available Sizes Qty/Box Part# (250/bag)  
#14-20 x 2-3/4" 1,500 DMIXLP122750S4  
#14 x 3" Gray ITW 1,000 DMI1096000  
Popular for 2"x4" dimensional lumber to C, Z or I purlin applications, 0.07" to 0.25" thick steel.

## MASONRY FASTENERS

### LDT TAPCON™ LARGE DIAMETER TAPCON™

Finished head, removable, self-threading anchors. The LDT anchor is a high performance anchor (superior performance to wedge anchors) that cuts its own threads into concrete. Installs in less than half the time of wedge anchors or adhesive anchors and offers superior performance over wedge anchors. Single piece design, no nut and washer. Made in U.S.A.

Anchor bodies are made of hardened carbon steel and zinc plated Grade 5. The anchors shall have a finished hex washer head with anti-rotation serrations to prevent anchor back-out. The head of the anchor is stamped with a length identification code for easy inspection. The anchor shall be installed with carbide tipper hammer drill bits made in accordance to ANSI B212.15-1994.



Standard Sizes	Qty/Box	Qty/Ctn	Part#
3/8" x 3"	50	400	DMITLDT3830
1/2" x 4"	25	150	DMITLDT1240
1/2" x 6"	25	120	DMITLDT1260
Special Order Size	Qty/Ctn	Part#	
3/8" x 1-3/4"	400	DMITLDT3816	
3/8" x 2-1/2"	400	DMITLDT3824	
3/8" x 4"	400	DMITLDT3840	
3/8" x 5"	320	DMITLDT3850	
1/2" x 3"	150	DMITLDT1230	
5/8" x 3"	100	DMITLDT5830	
5/8" x 5"	100	DMITLDT5850	
5/8" x 6"	50	DMITLDT5860	
3/4" x 4-1/2"	50	DMITLDT3444	
3/4" x 5"	50	DMITLDT3454	
3/4" x 6"	30	DMITLDT3462	

### STAINLESS STEEL LDT TAPCON™

410 Stainless Steel with Climacoat Silver coating for corrosion resistance. Finished head, removable, self-threading anchors. The LDT anchor is a high performance anchor (superior performance to wedge anchors) that cuts its own threads into concrete. Installs in less than half the time of wedge anchors or adhesive anchors and offers superior performance over wedge anchors. Single piece design, no nut and washer. Special order sold by the full case quantity only. Made in U.S.A.



Special Order Size	Qty/Ctn	Part#
3/8" x 1-3/4"	400	DMITSLDT3816
3/8" x 2-1/2"	400	DMITSLDT3824
3/8" x 3"	400	DMITSLDT3830
3/8" x 4"	400	DMITSLDT3840
3/8" x 5"	320	DMITSLDT3850
1/2" x 3"	150	DMITSLDT1230
1/2" x 4"	150	DMITSLDT1240
1/2" x 5"	150	DMITSLDT1250



## HEX HEAD HWH BLUE CONCRETE SCREW

Carbon Steel Masonry screw type anchor with blue TFL corrosion resistant coating. Designed for medium duty application in C.I.P concrete, hollow core block, solid block, brick or any other masonry material. Drill bit included in each box of 100 pieces. After predrill this anchor cuts threads into concrete and can be removed for adjustment, shimming, leveling and re-driven in to the same hole. Slotted hex head drive popular for non-low profile and non-countersink applications such as attachment of metal junction boxes to masonry. Imported.



Stock Sizes	Qty/Box	Qty/Ctn	Part#
1/4" x 1-1/4"	100	1000	DMI4HWHB14114
1/4" x 1-3/4"	100	1000	DMI4HWHB14134
1/4" x 2-1/4"	100	1000	DMI4HWHB14214
1/4" x 2-3/4"	100	1000	DMI4HWHB14234
1/4" x 3-1/4"	100	1000	DMI4HWHB14314

S.O. Sizes	Qty/Box	Qty/Ctn	Part#
1/4" x 3-3/4"	100	500	DMIT3163407
1/4" x 4"	100	500	DMIT3165407

**One drill bit comes in every 100 count box**

S.O. sizes are available by special order minimums will apply.

## PFH BLUE CONCRETE SCREW

Carbon Steel Masonry screw type anchor with blue TFL corrosion resistant coating. PFH Phillips drive head style. Designed for medium duty application in C.I.P concrete, hollow core block, solid block, brick or any other masonry material. Drill bit included in each box of 100 pieces. After predrill this anchor cuts threads into concrete and can be removed for adjustment, shimming, leveling and re-driven in to the same hole. Popular countersink installations include: wood headers and furring strips to masonry, HVAC strapping to masonry, plywood backer boards to masonry, and exterior insulation systems to masonry.



Stock Sizes	Qty/Box	Qty/Ctn	Part#
1/4" x 1-1/4"	100	1000	DMI4PFHB14114
1/4" x 1-3/4"	100	1000	DMI4PFHB14134
1/4" x 2-3/4"	100	1000	DMI4PFHB14234
1/4" x 3-1/4"	100	1000	DMI4PFHB14314

S.O. Sizes	Qty/Box	Qty/Ctn	Part#
1/4" x 3-3/4"	100	500	DMIT3193407

**One drill bit comes in every 100 count box**

S.O. sizes are available by special order minimums will apply.

Imported.

## 410 STAINLESS STEEL HWH CONCRETE SCREW

Hex head screw with 410 stainless steel with a silver longlife corrosion resistant coating. A stainless steel masonry anchor that cuts threads into concrete, brick or hollow block. Popular uses include: securing exterior fixtures to concrete, masonry walls and flooring. Removable, slotted hex head with extended corrosion protection from the 410 SS and Silver DMG85 coating.



Stock Sizes	Qty/Box	Qty/Ctn	Part#
1/4" x 1-1/4"	100	1700	DMICSH41415T

S.O. Sizes	Qty/Box	Qty/Ctn	Part#
1/4" x 1-3/4"	100	500	DMIT3368907
1/4" x 2-1/4"	100	500	DMIT3369907
1/4" x 3-1/4"	100	500	DMIT3371907
1/4" x 3-3/4"	100	500	DMIT3372907

**One drill bit comes in every 100 count box**

Additional sizes may be available by special order.

Imported.

## STAINLESS STEEL TAPCON™ 410 SS MASONRY SCREW PFH HEAD

Tapcons made of 410 stainless steel with a silver longlife corrosion resistant finish. A stainless steel masonry anchor that cuts threads into concrete, brick or hollow block. Popular uses include: Wood headers and furring strips to masonry, HVAC strapping to masonry, plywood backer boards to masonry, and exterior insulation systems to masonry. Removable, Phillips flat head, Made in the USA.



Sizes	Qty/Box	Qty/Ctn	Part#
3/16" x 1-1/4"	100	500	Special Order
3/16" x 1-3/4"	100	500	Special Order
1/4" x 1-1/4"	100	500	DMIT3373907
1/4" x 1-3/4"	100	500	DMIT3374907
1/4" x 2-1/4"	100	500	Special Order
1/4" x 2-3/4"	100	500	DMIT3376907
1/4" x 3-1/4"	100	500	Special Order
1/4" x 3-3/4"	100	500	Special Order

**One drill bit comes in every 100 count box**

Additional sizes may be available by special order.

## PAN\*CON SS - MASONRY OR WOOD

A new design in masonry substrate fastening. The PAN\*CON is the combination of the low profile Panclip head and a HILO concrete threaded shank. This 410 Stainless Steel PAN\*CON features a DMG85 Silver corrosion resistant coating exceeds ASTM B117 and FBC 1506.6 standards for excellent corrosion protection. SQ2 drive. Packaged in 100 piece boxes with a drill bit included. Popular for termination bar, Duraclad and standing seam attachment to masonry. The PAN\*CON is also an excellent substitute for HWH masonry screw applications.



Pan*Con 410 SS C Point SQ2 Drive		
Available Sizes	Qty/Case	Part#
#14 x 1-1/2" SQ2	1,700	DMIPC41415T
#14 x 2-3/4" SQ2	1,600	DMIPC414275T

Pan*Con 410 SS C Point SQ2 Drive	S.O. Sizes	Qty/Case	Part#
#14 x 4"	SQ2	1,200	DMIPC414400T
#14 x 6"	SQ2	1,200	DMIPC414600T

**One drill bit comes in every 100 count box**

S.O. sizes are available by special order minimums & lead times will apply. Imported.



DIRECT METALS, INC. offers many of our fasteners painted to complement metal panel colors. We have three painting and coating systems. DMG85 full coating system, VistaCoat Premium paint system or PowderCoated head paint finishes are available on most of our metal roofing and metal building fasteners.

## DMG85



DMI fasteners with the DMG85 coating system have been tested to surpass testing requirements set forth in the various building codes in the Southeast. This includes resistance to salt spray and acid rain conditions. This multilayer full coating is available in silver and in some cases black on the Panclip line of fasteners. All DMI Miami-Dade listed fasteners have DMG85.

## VistaCoat



VistaCoat fasteners are available with a full coat paint system. VistaCoat was developed to provide corrosion resistance above and beyond the industry 1000 hr salt spray standard (B117) on the whole fastener including the washer guard. Vista coat has built in UV resistance to combat paint fading and provides paint fade performance consistent with the top panel finishes in the industry. Vista coat is available on Woodgrip, IMPAX, XG, WoodZac, WoodMac and ZAC Impax self drilling fasteners in the standard colors below.

## PowderCoat



Direct Metals, Inc. also offers powder coated head paint systems on many of the SCAMP fasteners. Powder coated fasteners have excellent corrosion protection on the head and washer. Powder coating does not coat the whole fastener so galvanized and zinc platings are used to provide corrosion resistance on the shank and point portions of these fasteners. Powder coated fastener colors may vary slightly from the color chart below, mini-mums may apply.

## Rivets



Direct Metals, Inc. now offers 302/304 stainless steel #43 rivets in the standard colors noted below with a "R" in 250 count bag packaging. Additional colors in 100/bag packaging are designated with an "R100". These will be the only standard stock colors available in stainless steel rivets.

The color chart to the right is representative of our standard color offerings. Colors may vary from actual product due to color variations in the catalog printing process. Actual colored product samples are available on request.

R	R				R			R	
R100			R100				R100		
014 Bright White	001 White	348 Std Bone White	330 Warm White	816 Sierra White	385 Patina	052 Teal Green	660 Hemlock	232 Evergreen	732 Denali Green
			R	R	R				R
422 Taupe/Clay	109 Sand Beige	415 Beige	248 Light Stone	548 Ivory	928 Terracotta	102 Crimson Red	798 Hartford/Fern	925 ClassicGreen	228 Forest Green
	R100								
R		R		R	R			R100	
020 Tan (STD)	230 Desert Brown	110 Cocoa Brown	374 Dark Brown	537 Medium Bronze	890 Red (STD)	691 Barn Red	074 Colonial Red	393 Burgundy	432 Blue Teal
			R100						
R	SO	R	R	R		R		R	R
R100			R100			R100			
578 Old Town Gray	302 Pearl Gray	850 Ash Gray	324 Dark Bronze	042 Burnished Slate	023 Gloss Black	507 Matte Black	421 Navy	843 Gallery Blue	012 C./H. Blue
	R100	R	R		Metallics	R	R	R	R
696 Pewter Gray	091 Zinc Gray	051 Charcoal Gray	416 Slate Gray			1161 Silver	1160 Champagne	1162 Zactique	1116 Copper Penny

To find a registered DMI distributor call 855-800-8878

[www.directmetalsinc.com](http://www.directmetalsinc.com)



## Selecting an installation tool:

Use screw guns with torque relief devices. Avoid the use of impact guns and drivers. Impact drivers may damage protective coatings, platings, washers or paint leading to premature corrosion. Always see fastener data sheet for suggested installation practices. As a rule for metal to wood carbon steel and 410 stainless steel fastener use a 2,500 rpm max screw gun. General rule for metal to metal carbon steel and 410 stainless steel fastener use 2,000 rpm max screw gun. General rule for 304, 305 and 316 stainless steel fasteners use 1,000 rpm max screw gun.



YES  
Cordless or corded screw guns with depth sensing nose piece.



## Proper seating of washers:

Do not overdrive. (See illustration.)

Metal to Metal Fasteners		Metal to Wood Fasteners	
CORRECT Sealing material slightly visible at edge of metal washer. Assembly is weather tight.			
UNDERDRIVEN Sealing material not compressed, Assembly loose.			
OVERDRIVEN Sealing material extruded beyond edge of washer. Washer deformed.			

Drive fastener perpendicular to surface.

Metal to Metal Fasteners		Metal to Wood Fasteners	
CORRECT	INCORRECT	CORRECT	INCORRECT

## General rules and common mistakes:

- Not all stainless steel fasteners are alike or offer corrosion free performance. Please see DMI guide to stainless fasteners to see the difference between 300 series and 400 stainless steel fastener grades.
- For applications within 3000 lft of salt water, chlorine, or other corrosives use full 304 series stainless steel fasteners.
- For applications into pressure treated lumber use only full 300 series stainless fasteners such as a WoodZip SS or Bi-Metal fastener unless otherwise specified.
- Some panels or substrates may be harder than 300 series stainless steel fasteners, pre-drill of galvanized or galvalume panels must be done in order to avoid thread turn or point burn out.
- When fastening through Aluminum panels pilot holes must be drilled, cleaned and sealed prior to fastener installation. A fastener with full coating over stainless steel (WoodZIP-SS-A) will reduce the risk of dissimilar metal reactions given a moisture free and sealed installation condition.
- When fastening through Polycarbonate, Fiberglass, or PVC, pilot holes must be pre-drilled to allow for panel expansion and contraction. The diameter of the pilot hole must be larger than the fastener shank but smaller than that of the washer diameter.
- Torque fasteners to approx. 70% of torsional strength as washer allows.

## Selecting a drill point for steel substrates:

Most DMI fasteners thread patterns are matched to the drill point size. It is import to select the correct drill point size for your application. If you select an undersized drill point, excessive torque can result in snapped fasteners. If you select an oversized drill point, the thread spacing on the shank may be too fine for your application the fastener may back-out or strip-out.

Drill Point	#1	#2	#3	#4	#5
For steel thickness	0.18" - .095"	.036" - .210"	.036" - .210"	.125" - .250"	.125" - .505"

# Getting to know DMI policies:

## **Shipping Policy:**

### **Response Times and Same Day Shipping Cutoff Time:**

DMI Florida, DMI Indiana, DMI Georgia service centers cutoff for same day shipping on in-stock products is **1:00 PM EST for LTL** pallet shipments and **3:00 PM EST for UPS** parcel service shipments.

Pennsylvania, New York, Illinois, California and Iowa service centers and partner warehouses order cutoff for same day shipping of in-stock items is **11:00 AM EST**. Painted items allow 3-7 days to ship.

The above shipping times apply to in-stock finished material at time of order. Materials that have to be painted, washed, packaged or manufactured will take additional lead time.

## **Freight Policy:**

DMI freight terms are F.O.B. / freight charges will be additional. Some prepaid freight incentives are available on specific products shipping from the same service center on the same date. Please consult your DMI Distributor agreement and quotation for specifics on available prepaid freight incentives.

## **Return Policy:**

*All DMI distributors have the right to set their own policies with their customers including but not limited to: return, re-stock, pricing and terms of sale.*

*DMI policy to our distributors is that all sales are considered final (**ALL SALES FINAL**). If DMI management will accept a return, it must be a standard stock product returned in original un-opened packaging, with a non-negotiable restocking fee. Any painted or special order product sales are final, no returns. Prior approval from Direct Metals, Inc management is required for any and all returns. No returns on sales older than **45 days**, regardless of circumstance. No returns on items longer than 6' in length including polycarbonate and PVC panels. **Re-stocking fee is 25%** of the invoice amount, in addition to all shipping costs to send original shipment and return product to a Direct Metals, Inc service center. All credits for qualifying returns will be given in the form of an account credit against new purchases. **No cash refunds available.***

## **2018 Sales Policies and Conditions:**

Direct Metals, Inc. sells materials directly to our registered distributor network. We do not offer direct sales or new accounts to homeowners, contractors or installers; however we can assist you in finding the right product and your closest distributor.

*If your company would like to apply to become a new registered DMI distributor, here are guidelines to see if you may qualify to join our distributor network.*

*Registered dealers must maintain a minimum stock of DMI products.*

*Registered dealers must purchase an average minimum of \$ 5,000.00 / month.*

*Registered dealers must offer products for resale and not intercompany use.*

*Registered dealers must maintain and provide a copy of a Tax exempt resellers license.*

*Registered dealers must have a strong financial background and be able to have credit approved by DMI.*

*Dealer applicants should be a minimum of 25 miles from any existing DMI dealer.*

If your company does not meet all of the above criteria, DMI can assist you in creating a strong relationship with one of our very competitive distributors.

## **Information Policy:**

DMI works to maintain to the best of our abilities correct and current information in our catalogs and on our websites. However data and information on our products and services can quickly become out of date without prior warning. Part numbers and box labels may change or vary from this catalog or DMI websites. The information presented is from sources believed to be reliable but no warranty (expressed or implied) is made regarding accuracy, adequacy, completeness, legality, reliability or usefulness of any of the information contained within this catalog or DMI websites.

## **Employment Policy:**

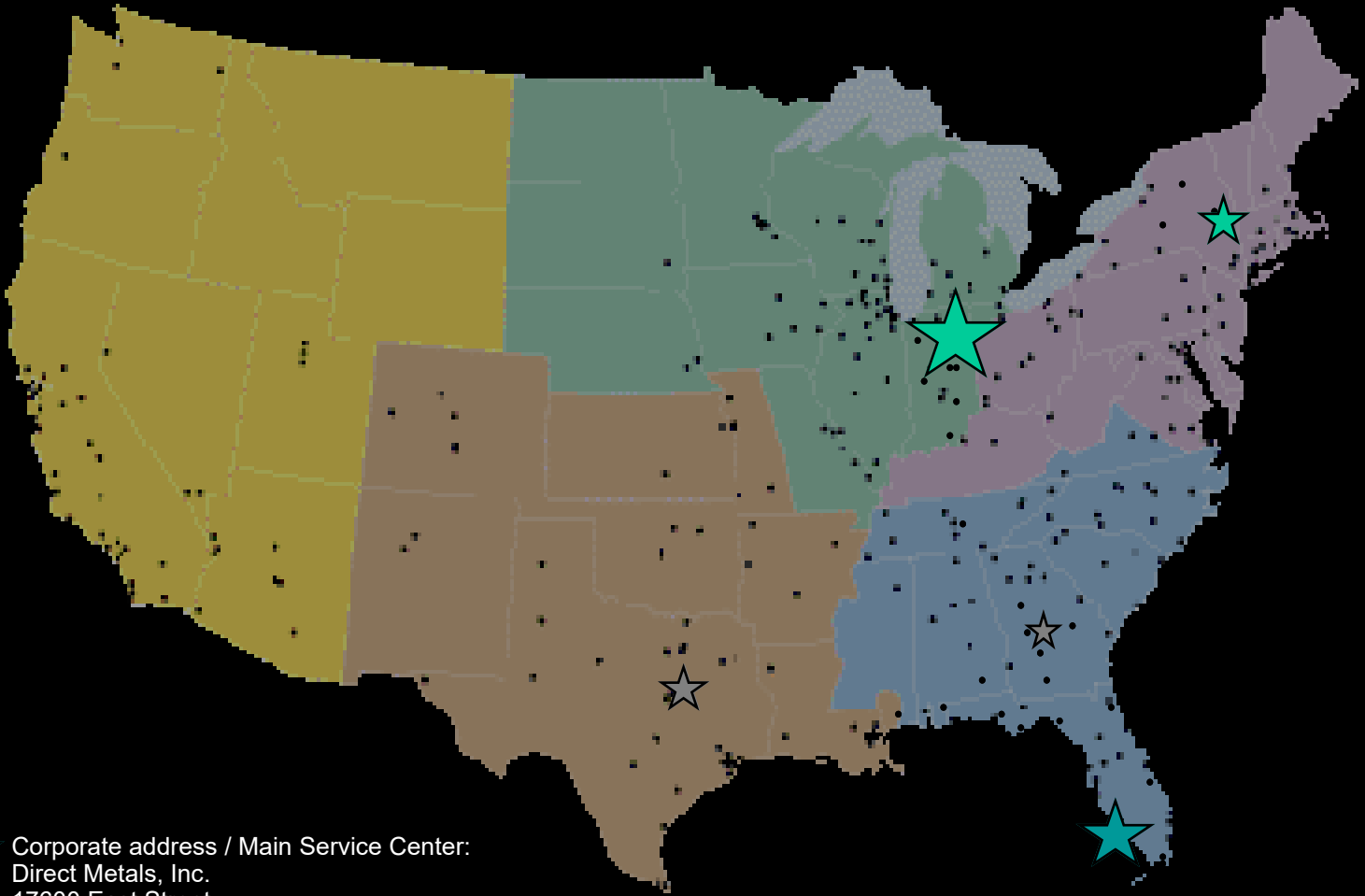
The Equal Employment Opportunity Policy of DMI is to provide a fair and equal employment opportunity for all associates and job applicants regardless of race, color, religion, national origin, gender, sexual orientation, age, marital status or disability. DMI hires and promotes individuals solely on the basis of their qualifications for the job to be filled. DMI maintains a company handbook with internal policies of conduct and benefits. To inquire about employment opportunities with DMI, please email a resume to [hr@directmetalsinc.com](mailto:hr@directmetalsinc.com).





Distributor order entry or product inquiries:  
Toll Free Phone: 855-800-8878  
Toll Free Fax: 855-800-8877  
orders@directmetalsinc.com  
Website: www.directmetalsinc.com

We are proud to have over 1300 distributors across the United States of America. These distributors are serviced through our warehousing locations strategically placed to offer fast service and low shipping cost on our quality products.



★ Corporate address / Main Service Center:  
Direct Metals, Inc.  
17600 East Street  
N. Ft Myers, FL 33917  
Phone: 239-599-8527  
Fax: 239-599-8545  
Manager Email: [andrew@directmetalsinc.com](mailto:andrew@directmetalsinc.com)  
Order tracking : [tracking@directmetalsinc.com](mailto:tracking@directmetalsinc.com)  
Order entry : [orders@directmetalsinc.com](mailto:orders@directmetalsinc.com)

★ Midwest Service Center:  
Direct Metals of Indiana  
1800 Jim Neu Drive, Suite 3  
Plymouth, IN 46563  
Phone: 574-935-3644  
Fax: 574-935-3643  
Order tracking : [tracking@directmetalsinc.com](mailto:tracking@directmetalsinc.com)  
Order entry : [orders@directmetalsinc.com](mailto:orders@directmetalsinc.com)

★ Future Service Center Coming Soon

***Your Direct Metals, Inc. distributor is:***



***www.directmetalsinc.com***