



Commercial Roofing Accessory Product Catalog 2018



TPO Bullet Boot

**WELDABLE TPO PIPE FLASHING
BUTYL*ROLL TAPE SEALANT**

The Bullet Products solution for TPO flat roofing pipe penetrations. This flashing is made with white Polyolefin Elastomer (TPO) and can be heat welded to TPO roofing systems. The boot is designed to be an aesthetically pleasing and features a removable pest screen. There is no specific approval number or system manufacturers warranty coverage on this item. Please check local building codes and roofing system manufacturers requirement prior to ordering.

Bullet Weldable TPO Boots 12"

Available Sizes	Qty/Box	Part#
1-1/2"	16	DMITPOBWT150
2"	16	DMITPOBWT200
3"	16	DMITPOBWT300
4"	8	DMITPOBWT150

Features & Benefits:

- Fast Installation
- 100% UV protected flexible TPO construction
- Non Staining and adapts to almost any roof pitch
- Covers the pipe inside and out
- Oil resistant

Specifications

Tensile Strength: 1800 psi ASTM D412
 Shore Hardness: 90 A ASTM D2240
 Service Temp: -74 deg F to 190 deg F
 Environmental Resistance: Excellent resistance to Ozone, UV, water, alcohol, weak acids & chlorine.



Butyl*Roll PREMIUM BUTYL TAPE SEALANT ROLL

Designed for sealing and preventing the entry of moisture, air and dust into metal lap joints, Butyl*Roll has expanded to serve a wide range of applications. Unlike tube sealants, Butyl*Roll provides a consistent shaped bead, and is quick and easy to apply. Meets or exceeds the following specifications: MIL-C-18959B TIICB, TT-C-1996A TIICB, AAMA 904.3-92 and AAMA 807.3-92 and is Made in the U.S.A.

ADVANTAGES:

A premium quality sealant roll made of 100% solids, highly rubbery, sticky and easy to apply. It shows excellent performance over a wide range of temperatures and conditions. Excellent adhesion to Galvalume and Kynar 500, non-staining and permanently flexible. Butyl*Roll is mold and mildew resistant. Unlike many of the competitors Butyl*Roll is **Approved for use on Polycarbonate Panels**.



Standard stock sizes include

Size	Qty/Box	Part#
Single bead styles		
3/32 x 3/8" x 45'	40	DMBT3323845
3/32 x 1/2" x 45'	32	DMBT3321245
3/32 x 3/4" x 45'	24	DMBT3323445
3/32 x 1" x 45'	20	DMBT332145

Double bead styles

3/16 x 7/8" x 40'	10	DMBT31678D
-------------------	----	------------

Triple bead styles

3/16 x 7/8" x 25'	14	DMBT31678M
3/16 x 2-1/2" x 20'	6	DMBT3162122



3/8"
Shown

HIGH QUALITY SEALANTS & BLIND RIVETS

7108 PERMATHANE™ PREMIUM POLYURETHANE Exterior Construction Sealant

Permthane® SM7108 is a one component, gun-grade, non-sag, moisture-cure polyurethane sealant. This high performance product is designed with outstanding UV resistance and long term durability with a proven record in tough climates around the world. Permthane is the choice of true professional installers. 7108 Permthane is an excellent repair sealant due to its moisture cure properties. Permthane can be installed underwater or in damp areas and achieve 95% of its full bonding capability. Ideal for mill finish and painted metal roofing panels, window installation, gutter installation and repair and much more. Premium antifungal agents and bonding capabilities.

30 (10.1oz) tubes/cartridges per carton.

Color:White Part # DMISM7108W

30 (10.1oz) tubes/cartridges per carton.

Color:Gray Part # DMISM7108G



ACRYLIC BUTYL CAULK, ACRYL-R™ 5430 NON SKINNING / NON SAG SSR SEALANT

SM5430 Acryl-R® is a white non-skinning, non-drying sealant based on a unique elastomer that provides a non-stringy consistency and excellent resistance to severe environmental conditions of heat, cold and moisture. **(DO NOT EXPOSE TO SUNLIGHT)**. It has excellent webbing characteristics and adhesion to GALVALUME®, GALVALUME PLUS®, ACRYLUME®, ZINCALUME®, KYNAR 500®, siliconized and polyvinyl fluoride painted metals.

TYPICAL USES:

SM5430 is designed for factory sealing the female lip of a concealed standing seam roof (SSR) rib, as well as wall panels and polyurethane foam panel joints. Excellent for sealing between dissimilar metals to prevent electrolysis. Excellent for use as an acoustical sealant. Excellent for sealing hidden details in window and door installations; bedding of mounting fins and flashing and sealing end dams and receptor pans.

30 (10.1oz) tubes/cartridges per carton.

Color:White Part # DMSM5430WC

50 gallon drum with polyliner. (4 drums/pallet) Color:White Part # DMSM5430W50



POLY-GLAZE™ PLUS CLEAR SILICONE SEALANT

SM5731 Poly-Glaze™ Plus Silicone is a one component, medium modulus, non-corrosive silicone sealant. Excellent adhesion to aluminum, glass and a variety of painted surfaces without priming. It has a very low odor factor, and cures to a flexible, resilient rubber when exposed to moisture in the atmosphere. Made in the U.S.A.



30 (10.1 OZ) tubes/case Part# DMSM5731C

ACRYL-R™ 5522 CLEAR ACRYLIC SEALANT

Clear color ideal for mill finish and painted metal roofing panels. Premium antifungal agents and bonding capabilities. SM5522 Acryl-R® Acrylic Sealant is a solvent release acrylic compound. It exhibits good adhesion to most construction surfaces and remains ductile in the presence of ultraviolet and infrared radiation, making it an excellent general purpose sealant. After cure, it can be painted. Made in USA.



30 (10.1 OZ) tubes/case Part# DMSM5522CC

GEOCEL™ 2300 CLEAR TRIPOLYMER SEALANT

Ships from Midwest service center only, call for availability of colors

2300 construction Tripolymer Sealant is a single component, high performance elastomeric sealant for use in a wide variety of roofing, manufacturing, solar and general construction applications. 10 oz tubes available in 24/case in clear. Now in cardboard or plastic tubes, ships from Midwest service center only.



#43 RIVETS

Blind rivets fasten joints without access to the reverse side of the sheet metal. DMI #43 painted stainless steel rivets are manufactured of corrosion resistant 302 / 304 stainless steel. DMI SS rivets exceed the corrosion resistant standards put forth in Florida Building Code section 1506.6. DMI also offers un-painted #43 rivets in 304 stainless steel, 316 stainless steel and copper/brass. Rivet length is measured to the end of the rivet body. A #43 rivet has a 1/8" diameter body with a 5/16" body length. Its grip range is material from .12" to .187" (1/8" - 3/16").



	Mill Finish Type	Qty/Box	Part#
<u>Painted SS</u>	#43 304SS	6,000	DMI2L1290C
#43 304SS	#43 316SS	6,000	DMI43316SS
	#43 Copper	6,000	DMI2L4300C

Standard Colors SS Rivet for 250 Piece Per Bag Packaging:

Ash Gray 850, Black 507, Bright White 014, Burnished Slate 042, Caribbean Blue 012, Slate Gray/Charcoal 416, Cocoa Brown 110, Dark Bronze 324, Charcoal/Dark Gray 051, Evergreen 232, Forest Green 228, Gallery Blue 843, Light Stone 248, Medium Bronze 537, Metallic Champagne 1160, Metallic Copper 1116, Metallic/Nevada Silver 1161, Preweathered Galvalume/Zactique 1162, Mill Finish, Old Town Gray 578, Patina Green 508, White 001, Red 890, Tan 020, Terra Cotta 928.

Standard Colors SS Rivet for 100 Piece Per Bag Packaging: :

Almond 330, Black 507, Bright White 014, Colonial Red 074, Dark Bronze 324, Evergreen 232, Mansard Brown 1111, Medium Bronze 537, Mill Finish, Pearl Gray 302, Sand Beige 109, Slate Gray 091.



DEKFAST™ COMMERCIAL ROOFING FASTENERS

#12-13 DEKFAST™ FASTENER (PH3)

Ideal for insulation attachment to wood and light gauge steel. SD#1 point cuts through gravel, BUR and metal up to 18ga. Black Sentri XP long-life coating for extended corrosion protection. The #3PH pan head is compatible with all Dekfast insulation stress and membrane seam plates. Packaged in sealed plastic jobsite pails with one PH3 bit tip per pail. **FM & Dade County Approved**



Available Sizes	Qty/Pail	Part#
#12 x 1-5/8"	1,000	DMI2A8513995B
#12 x 2-1/4"	1,000	DMI2A8518995B
#12 x 2-7/8"	1,000	DMI2A8523995B
#12 x 3-1/4"	1,000	DMI2A8526995B
#12 x 3-3/4"	1,000	DMI2A8530995B
#12 x 4-1/2"	1,000	DMI2A8536995B
#12 x 5"	1,000	DMI2A8540995B
#12 x 6"	1,000	DMI2A8548995B
#12 x 7"	500	DMI2A8556995B
#12 x 8"	500	DMI2A8564995B

DEKPACK 100 Pack All Purpose Screws



The same DEKFAST all purpose fasteners as above packaged in convenient 100 pack boxes. Ideal for stocking your shelves for repair or fill in jobs.

Packaged with one PH3 bit tip per box.

#12 DEKPACK SCREWS

Sizes	Qty /Box	Boxes /Case	Part#
1-5/8"	100	9	DP158
2-1/4"	100	9	DP214
2-7/8"	100	9	DP278
3-1/4"	100	9	DP314
3-3/4"	100	9	DP334
4-1/2"	100	9	DP412
5"	100	9	DP500

DEKPACK Plates

Sizes	Qty /Box	Boxes /Case	Part#
3" Ins	100	9	DPP3
2 3/8" Mem	50	9	DPP234

Strength	Pull out Steel	Pull out Wood	Size PH3
Tensile:2410	22GA:513	2X : 1" 462	HeadH .118
Torsion:78 inlbs	20GA:695	3/4"PLY:575	HeadD .448
Shear: 1815	18GA:787		Thread:.222



#14-10 DEKFAST™ HD FASTENER

Ideal for insulation or membrane attachment to wood, concrete and light gauge steel. This HD fastener has a #3 Phillips MTW low profile head with strength shoulder and a SD#1 point that cuts through gravel, BUR and metal up to 18 gauge.

#3PH MTH is compatible with all Dekfast insulation stress and membrane seam plates. Coated with Black Sentri XP long-life coating for extended corrosion protection. Packaged in sealed plastic jobsite pails with one PH3 bit tip per pail. **FM & Dade County Approved**



Available Sizes	Qty/Box	Part#
#14 x 1-1/4" PH#3	1,000	DMI2A7210995B
#14 x 2" PH#3	1,000	DMI2A7216995B
#14 x 3" PH#3	1,000	DMI2A7224995B
#14 x 4" PH#3	1,000	DMI2A7232995B
#14 x 5" PH#3	1,000	DMI2A7240995B
#14 x 6" PH#3	1,000	DMI2A7248995B
#14 x 7" PH#3	500	DMI2A7256995B
#14 x 8" PH#3	500	DMI2A7264995B
#14 x 9" PH#3	500	DMI2A7272995B
#14 x 10" PH#3	500	DMI2A7280995B
#14 x 11" PH#3	500	DMI2A7288995B
#14 x 12" PH#3	500	DMI2A7296995B

Strength	Pull out Steel	Pull out Wood/Concr	Size PH3
Tensile:3600	22GA:540	2X : 1" 605	HeadH .118
Torsion:110 inlbs	20GA:630	3/4"PLY:590	HeadD .448
Shear: 2630	18GA:900	4000psi:850	Thread:.238

#15-13 DEKFAST™ XHD HIGH STRENGTH FASTENER

Ideal for insulation attachment to wood and light gauge steel. SD#1 point cuts through gravel, BUR and metal up to 18ga. Black Sentri XP long-life coating for extended corrosion protection. The #3PH pan head is compatible with all Dekfast insulation stress and membrane seam plates. Packaged in sealed plastic jobsite pails with one PH3 bit tip per pail. **FM & Dade County Approved**



Available Sizes	Qty/Box	Part#
#15 x 2" PH#3	1,000	DMI2C2010995P
#15 x 3" PH#3	1,000	DMI2C2020995P
#15 x 4" PH#3	1,000	DMI2C2030995P
#15 x 5" PH#3	1,000	DMI2C2040995P
#15 x 6" PH#3	500	DMI2C2050995P
#15 x 7" PH#3	500	DMI2C2060995P
#15 x 8" PH#3	500	DMI2C2070995P
#15 x 9" PH#3	500	DMI2C2075995P
#15 x 10" PH#3	500	DMI2C2080995P
#15 x 11" PH#3	500	Made to Order
#15 x 12" PH#3	250	DMI2C2090995P
#15 x 14" PH#3	250	DMI2C2100995P
#15 x 16" PH#3	250	DMI2C2110995P
#15 x 18" PH#3	250	Made to Order
#15 x 20" PH#3	250	Made to Order
#15 x 22" PH#3	250	Made to Order
#15 x 24" PH#3	250	Made to Order
#15 x 26" PH#3	250	Made to Order
#15 x 28" PH#3	200	Made to Order

Fasteners longer than 4" have 4" of thread starting from the drill tip. Some lengths of #15 XHD have been discontinued and are now available only on a made to order basis (minimums and lead times will apply).

Strength	Pull out Steel	Pull out Wood/Conc	Size PH3
Tensile:4300	22GA:706	2X : 1" 692	HeadH .130
Torsion:130inlbs	20GA:898	3/4"PLY:703	HeadD .448
Shear: 3700	18G:1140	4000psi:728	Thread:.263

#14-10 410 STAINLESS STEEL DEKFAST™ HD

Ideal for insulation or membrane attachment to wood, concrete and light gauge steel in a corrosive environment. 410 stainless steel is magnetic and will provide a fair resistance to corrosion in mild to light industrial environments. This fastener exceeds the Factory Mutual corrosion-resistance standard 4470, however it will eventually rust (For higher corrosion resistance consider PanclipSD-SS-L on pg19). This HD fastener has a #3 Phillips MTW low profile head and a SD#1 point that cuts through gravel, BUR and metal up to 18 gauge. #3PH MTH is compatible with all Dekfast insulation stress and membrane seam plates. Packaged in sealed plastic jobsite pails with one PH3 bit tip per pail.



* Lengths greater than 6" require additional lead time and minimums.

Available for order in full box quantity only.

Available Sizes	Qty/Box	Part#
#14 x 1-1/2" PH#3	1,000	DMI2G8500B
#14 x 2" PH#3	1,000	DMI2G8510B
#14 x 3" PH#3	1,000	DMI2G8520B
#14 x 4" PH#3	1,000	DMI2G8530B
#14 x 5" PH#3	1,000	DMI2G8540B
#14 x 6" PH#3	1,000	DMI2G8550B
#14 x 7" PH#3	500	DMI2G8560B *
#14 x 8" PH#3	500	DMI2G8570B *
#14 x 10" PH#3	500	DMI2G8580B *
#14 x 12" PH#3	500	DMI2G8590B *

Pull out Steel	Pull out Wood	Size PH3
24GA:325		HeadH .118
22GA:470	3/4"PLY:495	HeadD .440
20GA:635	MTH Head	Thread:.235

#12-24 PURLIN FASTENERS

Designed for installation of insulation and membrane attachment to medium and heavy steel purlins from 16 ga to 1/4" thick steel. (Consider #14 Panclip SD HD for heavy duty applications.) #12 diameter 24 threads per inch, #3 square drive pancake head and coated with Black Senti-XP coating to meet FM corrosion resistance standard 4470. Plan for the even inch length as the usable length as 3/4" of the fastener is unthreaded lead and drill point. Example 3-3/4" fastener = a 3" usable



Available Sizes	Qty/Box	Part#
#12 x 3-3/4" SQ#3	1,000	DMI2C4325995B
#12 x 4-3/4" SQ#3	1,000	DMI2C4335995B
#12 x 5-3/4" SQ#3	1,000	DMI2C4345995B
#12 x 6-3/4" SQ#3	500	DMI2C4355995B

Pull out	Pull out	Thread:.207
18GA:375	3/16": 2300	HeadH .110
16GA:599	1/4": 2300	Tensile: 2300

#14 NAILBOARD INSULATED PANEL FASTENER

Designed for installation of nailboard and plywood to light gauge metal deck, wood and plywood. Available in #3 square drive with SD1 point. Flat profile head for flush engagement, 5/8" oversized head eliminates the need for plates. Fully coated with black Senti-XP coating to meet FM corrosion resistance standard 4470. Shorter lengths are packaged in plastic reusable pails, longer lengths in cardboard boxes. One SQ3 installation bit tip is included per pail/box. Available for order in full box quantity only.



Pull out Steel	Pull out Wood	Size PH3
22GA:498	1" pen:845	HeadH .072
Tensile:3500	1.5"pen1344	HeadD .645
Shear:2700	IPF Head SQ3	Thread:.245

Available Sizes	Qty/Box	Part#
#14 x 2-5/8" SQ#3	500	DMI2B7221995R
#14 x 3" SQ#3	500	DMI2B7224995R
#14 x 3-1/2" SQ#3	500	DMI2B7228995R
#14 x 4" SQ#3	500	DMI2B7232995R
#14 x 4-1/2" SQ#3	500	DMI2B7236995R
#14 x 5" SQ#3	500	DMI2B7240995R
#14 x 5-1/2" SQ#3	500	DMI2B7244995R
#14 x 6" SQ#3	500	DMI2B7248995R
#14 x 6-1/2" SQ#3	500	DMI2B7252995R
#14 x 7" SQ#3	500	DMI2B7256995R
#14 x 7-1/2" SQ#3	500	DMI2B7260995R
#14 x 8" SQ#3	250	DMI2B7264995R
#14 x 8-1/2" SQ#3	250	DMI2B7266995R
#14 x 9" SQ#3	250	DMI2B7268995R
#14 x 10" SQ#3	250	DMI2B7272995R
#14 x 11" SQ#3	250	DMI2B7276995R
#14 x 12" SQ#3	250	DMI2B7280995R

T.P.R THE PEEL RIVET

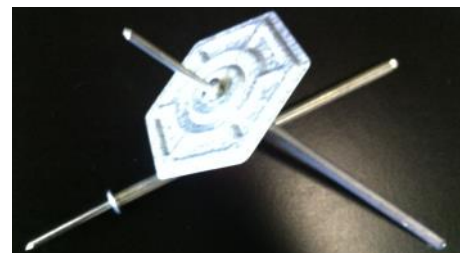
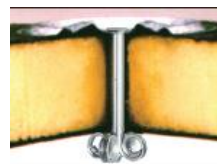
For insulation and membrane plate attachment to problematic decks where threaded fasteners cannot achieve required pull-out values. The TPR rivet (an aluminum/magnesium alloy fastener) is the go to fastener to resist dynamic wind uplift loads. Corrosion-resistant components for corrosive building environments. Drill, insert and set installation process. A Taurus 2 Pneumatic-hydraulic setting tool is required for installation. Taurus 2 tools are available for purchase or rental when you purchase the peel rivet.



Available Sizes	Qty/Box	Part#
1-1/2"	1,000	DMI21241233
3"	500	DMI21241241
4"	500	DMI21241244
5"	500	DMI21241246
6"	500	DMI21241248
7"	250	DMI21241249

2", 8", 9" and 10" lengths are available by special order expect minimums and lead times.

Base Material	Pre-Drill	Embedment	Pull - out
Steel	7mm/ 9/32"	Min 1"	26GA:465
Woodfiber	7mm/ 9/32"	Min 1"	1/2"OSB:330
Lightweight Concrete	7mm/ 9/32"	Min 1"	3"GYP:430



PANCLIP-SD for applications that require a low profile head with large flat under head load bearing surface. The Panclip head combines a larger clamping surface than a PFH fastener and a lower profile than a HWH or hex head fastener. Designed primarily for the installation of standing seam metal roofing panel clips. The Panclip also has many other applications such as window, door, fixture, liner panel, cladding and siding panel installations. Panclip SD fasteners are for metal substrate applications, Panclip SDL fasteners are for wood or light gauge metal applications.

PANCLIP-SD-L SELF DRILLING MTM **Light gauge applications up to 16 ga**

#14-13 Panclip fastener designed for clip, nailbase and fixture attachment to metal decking from 22 ga to 16 ga in thickness. The Panclip SD-L features the DMG85 black coating that meets FBC and MDC corrosion resistance requirements. Panclip SDL has a #2 square drive and precision drill point. Bulk packaged.



PANCLIP SD-L COATED BLACK B=BULK

Available Sizes	Qty/Box	Part#
#14 x 1-1/2"	2,500	DMIPL1415D
#14 x 3"	2,000 B	DMIPL1430D
#14 x 4"	1,000 B	DMIPL1440D
#14 x 5"	1,000 B	DMIPL1450D
#14 x 6"	1,000 B	DMIPL1460D
#14 x 7"	1,000 B	DMIPL1470D
#14 x 8"	500 B	DMIPL1480D



#L16-0706.03 (DMIPL1415D)

PANCLIP-SD SELF DRILLING MTM **Medium gauge applications .036"-.210"**

Panclip low profile pancake head mated to a self drilling drill point for drill and tap performance into metal and steel substrates. PANCLIP-SD features the 1000hr DMG85 silver coating to meet FBC1506.6 and other corrosion resistance requirements. Packaged in 250 count bags.



PANCLIP SD - DMI SILVER COATED P2/S2

Available Sizes	Qty/Box	Part# 1000hr
#10-16 x 1" SD2	5,000	DMIPD210100C
#10-16 x 1-1/2" SD2	2,500	DMIPD210150C
#12-14 x 1" SD3	5,000	DMIPD312100C
#12-14 x 2" SD3	2,000	DMIPD312200C

SD2 and SD3 point fasteners are designed to self drill and tap into metal substrates from 22ga up to 8 ga steel.

#12-24 PANCAKE HEAD PURLIN FASTENERS

Designed for installation of insulation and membrane stress plates. For attachment to steel purlins from 12 ga to 3/16" in thickness. #12 diameter, 24 threads per inch, #3 square drive. Black Senti XP coating. 3/4" of the length of this fastener is unthreaded and drill bit.



Available Sizes	Qty/Box	Part#
#12 x 3-3/4" SQ#3	1,000	DMI2C4325995B
#12 x 4-3/4" SQ#3	1,000	DMI2C4335995B
#12 x 5-3/4" SQ#3	1,000	DMI2C4345995B
#12 x 6-3/4" SQ#3	500	DMI2C4355995B

Bulk packaged (not bagged)

PANCLIP-SD #14 HD SELF DRILLING MTM **Heavy gauge/purlin applications .12"-.250"**

Panclip low profile pancake head designed for installing panel clips, fixtures and stress plates into steel substrates. PANCLIP-SD HD features a SD4 heavy drill point and square drive #3 for driving stability. Fully coated with DMG85 FBC 1506.6/MDC Coating, packaged 250 pcs / bag.



PANCLIP SD4 HD - DMI SILVER COATED SQ3

Available Sizes	Qty/Box	Part# 1000hr
1/4-20 x 1-1/2"	2,500	DMIP414150TC
1/4-20 x 5"	1,000	DMIP414500TC
1/4-20 x 7"	1,000	DMIP414700TC

SD4 point fasteners are designed to self drill and tap into metal substrates from 12ga up to 1/4" thick steel beams.

PANCLIP-SD-SS-L STAINLESS STEEL MTM **Light gauge applications up to 18 ga**

#14-13 Stainless Steel fastener designed for clip, nailbase and fixture attachment to metal decking from 22ga to 18ga in thickness. The Silver DMG85 coating provides a high level of corrosion & dissimilar metal reaction resistance. Panclip SD-SS-L comes bulk packaged and has a #2 square drive. DMG85 coated 410 Stainless steel exceeds 1506.6 & MDC standards.



PANCLIP SD-SS-L 410SS CTD BULK

Available Sizes	Qty/Box	Part#
#14 x 1-1/2"	2,500	DMIP41415D
#14 x 3"	1,000	DMIP41430D
#14 x 5"	500	DMIP41450D
#14 x 7"	500	DMIP41470D

PANCLIP-SDSS 410 STAINLESS STEEL MTM **Medium gauge applications .036"-.210"**

Panclip low profile pancake head with full 410 stainless steel construction and the DMG85 silver coating for resistance to dissimilar metal reaction and corrosion. Designed for clips and fixtures attachment to medium gauge steel substrates. #2 Square Drive. Packaged 250 pcs / bag.



PANCLIP SD-SS 410SS CTD SQ2 250/BAG

Available Sizes	Qty/Box	Part#
#10-16 x 3/4" SD3	5,000	DMIP41075DC
#10-16 x 1" SD3	5,000	DMIP41010DC
#12-14 x 2" SD3	2,000	DMIP41220DC



#L15-0518.08

GALVALUME STEEL ROUND 3" INSULATION PLATE

Our most popular plate for holding rigid insulation / ISO boards.

Compatible with #12 Dekfast, #14 Dekfast, #15 Dekfast, 1/4" Dekfast Spike, TPR Peel Rivet, #12-24 Purlin fasteners, #10 #12 or #14 Panclip SDL and Panclip SD fasteners.
Size : O.D: 3" Round I.D: 0.268" Thickness: 0.019 Material: AZ50 Galvalume

FM and DADE COUNTY APPROVED

Available in sealed plastic jobsite pails or 100 count cardboard box packaging

1,000 pcs / pail packaging is part # DMI2M7685

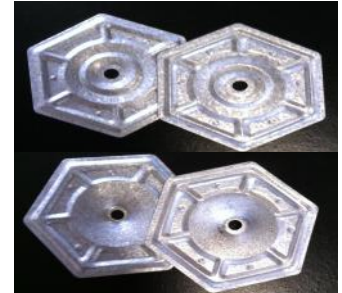
100 pcs / box packaging is part # DPP3



GALVALUME STEEL 2-7/8" HEX INSULATION PLATE

For use with: #12 Dekfast PH3, #14 Dekfast, #15 Dekfast, 1/4" Dekfast Spike, TPR and K-Fast. Size O.D: 2-7/8" Hex I.D: 0.270" Thickness: 0.019 AZ50 Galvalume

Special order ships from PA warehouse only. 1,000 pcs / pail Part# DMI2M7550XS



GALVALUME STEEL 2-7/8" RECESSED HEX INSULATION PLATE

For use with: #12 Dekfast HEX, HWH un-washed SteelZip or Impax drill screws

O.D: 2-7/8" Hex I.D: 0.250" Thickness: 0.019 AZ50 Galvalume

Special order ships from PA warehouse only. 1,000 pcs / pail Part# DMI2M7530



DEKFLAT PLASTIC LOCK INSULATION PLATE 3" ROUND

Flat bottom is ideal for use in highly corrosive environments to secure rigid ISO/insulation boards. For use with: #12 Dekfast PH3, #14 Dekfast HD, & Panclip #10 TP-17 White.

O.D: 3" Hex I.D: 0.260" Made of Polypropylene

1,000 pcs / pail

Part# DMI2M32265DK



ASSEMBLED IN PLATE FASTENER

DEKFAST™ #12 fasteners pre-assembled in 3" round galvalume insulation plates. When installed with Stealth tools, productivity increases up to 30%. Available in full box quantities only. These assembled fasteners ship from the PA warehouse only and cannot be combined with other items.



Available Sizes	Qty/Box	Part#
#12 x 1-5/8" PH#3	500	DMI2A8513995V
#12 x 2-1/4" PH#3	250	DMI2A8518995V
#12 x 2-7/8" PH#3	250	DMI2A8523995V
#12 x 3-1/4" PH#3	250	DMI2A8526995V
#12 x 3-3/4" PH#3	250	DMI2A8530995V
#12 x 4-1/2" PH#3	250	DMI2A8536995V
#12 x 5" PH#3	250	DMI2A8540995V
#12 x 6" PH#3	250	DMI2A8548995V
#12 x 7" PH#3	200	DMI2A8556995V
#12 x 8" PH#3	200	DMI2A8564995V

DEKFAST™ MEMBRANE SEAM PLATES

20-GA GALVALUME STEEL ROUND 2-3/8" BARBED MEMBRANE PLATE

Our most popular plate for membrane seam applications.

Compatible with #12 Dekfast, #14 Dekfast, #15 Dekfast, 1/4" Dekfast Spike, TPR Peel Rivet, #12-24 Purlin fasteners, #10 #12 or #14 Panclip SDL and Panclip SD fasteners.

O.D: 2-3/8" Round I.D: 0.260" Thickness: 0.038 AZ50 Galvalume FM & DC APPROVED

1,000 pcs / pail Part# DMI2M7665

Available in sealed plastic jobsite pails or 100 count cardboard box packaging

1,000 pcs / pail packaging is part # DMI2M7665

50 pcs / box packaging is part # DPP234



20-GA GALVALUME STEEL 2" ROUND BARBED MEMBRANE PLATE

For use with: #14 Dekfast HD, #15 Dekfast, 1/4" Dekfast Spike, and TPR.

O.D: 2" Round I.D: 0.265" Thickness: 0.038 AZ50 Galvalume

Special order ships from PA warehouse only. 1,000 pcs / pail Part# DMI2M7525



ISOWELD TPO PLATES

For use with: #15 Dekfast

TPO plate is G90 galv steel with proprietary yellow TPO adhesive coating and gray polyester on back of the plate. Special order ships from PA warehouse only.



ISOWELD PVC/KEE PLATES

For use with: #15 Dekfast

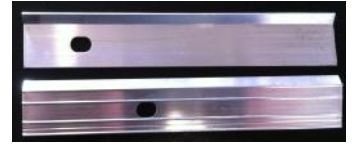
PVC plate is G90 galv steel with proprietary purple PVC adhesive coating and gray polyester on back of the plate. Special order ships from PA warehouse only.



Termination Bar is manufactured from specially extruded aluminum bar for wall termination applications. DMI / Dekfast™ termination bar has reinforced strengthening ribs that allow for use in high wind areas.

RIBBED TERMINATION BAR WITH LIP (KICK)

Dimensions: 0.050" edge x 0.075" ribs x 1" wide x 10' long
Holes: 0.268" x 0.380" slotted at 6" on center standard
For use with: #14 Dekfast HD, #15 Dekfast, ZAC Anchor, Zinc Nailin, and Dekspike.
500 LNFT / Tube (50 pieces x 10') Part# DMI2H3035



RIBBED TERMINATION BAR FLAT

Dimensions: 0.075" edge x 0.100" ribs x 1" wide x 10' long
Holes: 0.268" x 0.380" slotted at 6" on center standard
For use with: #14 Dekfast HD, #15 Dekfast, ZAC Anchor, Zinc Nailin, and Dekspike.
500 LNFT / Tube (50 pieces x 10') Part# DMI2H3125



LIP & BALL TERMINATION BAR (NO RIBS)

Dimensions: 0.088" edge x 1" wide x 10' long
Holes: 0.268" x 0.380" slotted at 6" on center standard
For use with: #14 Dekfast HD, #15 Dekfast, ZAC Anchor, Zinc Nailin, and Dekspike.
500 LNFT / Tube (50 pieces x 10') Part# DMI2H3155



NAILIN - DRIVE PIN MASONRY ANCHORS

Termination bar fastener designed for installation into concrete, block, brick and stone. Zinc composition to prevent corrosion with zinc plated nail/pin. Stainless steel nailin anchors have a 304 stainless steel pin with the same zinc body to resist corrosion. Pre-drill and hammer pin for installation.

<u>Zinc Pin Sizes</u>	<u>Qty/Box</u>	<u>Part#</u>
1/4" x 1"	100/1,000	DMI4N7100
1/4" x 1-1/4"	100/1,000	DMI4N7110
1/4" x 1-1/2"	100/1,000	DMI4N7115
1/4" x 2"	100/1,000	DMI4N7120
1/4" x 3"	100/Box	DMI4N7130

<u>Stainless Steel Pin Sizes</u>	<u>Part#</u>
1/4" x 1-1/4"	DMI4N7112

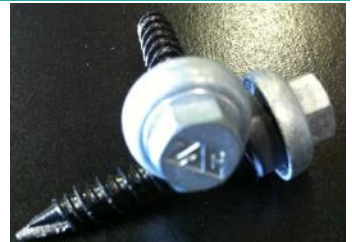


Zinc Nailin Anchor performance in 4000 psi concrete:
7/8" Embedment depth; tension load : 820, shear load : 1500.
1-3/8" Embedment depth; tension load : 1150, shear load : 1500.

#14 ZAC™ ANCHOR LONG LIFE TERM BAR ANCHOR w/washer

Termination bar fastener that can be backed out. Threads into wood, masonry, concrete and light gauge metal. ZAC™ cap is zinc alloy that is designed to never rust with a 20 year warranty. Can be removed and re-engaged for roof repairs without damage to the roof system. Shank is coated with black e-coating for corrosion protection.

3/8" AFH ZAC Anchor performance: **7/32" Drill bit required for pre-drill**
1" Embedment depth, tension load : 620, shear load : 830.
1-1/2" Embedment depth, tension load : 1000, shear load : 1430.



<u>Available Sizes</u>	<u>Qty/Box</u>	<u>Part#</u>
#14 x 1-3/8"	1,000	DMI2N7305FM999C

STEEL DECKING & UL DECKING ATTACHMENT FASTENERS

Used for attachment of steel decking to steel purlins from 12ga up to 1/2" thick. #10 x 3/4" designed for steel B deck side lap stitch. The original TEK screw with a worldwide reputation for fast drilling quality self drilling points for metal to metal applications with FM & ICC listings/approvals. TEKS featured here have a full Climacoat 1000 hour+ coating. Most sizes are Made in the USA. Full box orders only.

<u>Available Sizes</u>	<u>Qty/Box</u>	<u>Part#</u>
#12-24 x 1-1/4" TEK5 HWH	2,500	DMI1006053
#12-24 x 1-1/2" TEK5 HWH	2,000	DMI1070053
1/4-14 x 3" TEK3 HWH	1,000	DMI1157000
1/4-28 x 3" TEK5 HWH	1,000	DMI1074000
1/4-28 x 4" TEK5 HWH	500	DMI1075000
1/4-28 x 5" TEK5 HWH	250	DMI1641000
1/4-28 x 6" TEK5 HWH	250	DMI1431000
1/4-28 x 8" TEK5 HWH	150	DMI1590000
#10-16 x 3/4" TEK1 HWH	5,000	DMI1107053



<u>Pull out 1/4-28 TEK5 Steel</u>	<u>Pull out 12-24 TEK5 Steel</u>	<u>Made in the USA #12-24</u>
12GA: 1507	12 : 1507	Shear: 2762
3/16 : 3300	3/16 : 3107	Tensile: 3020
1/4 : 5059	1/4 : 3999	Torsional: 100 inlbs

**SEE PAGE 22
FOR MORE
DECKING
FASTENER
OPTIONS**



Looking for 304 STAINLESS STEEL SELF DRILLING FASTENERS? PLEASE SEE OUR BI-METAL FASTENERS ON PAGE 21

STEELZIP HWH ECONO SELF DRILLING FASTENERS ZINC PLATED

Self drill fasteners for metal to metal applications such as ductwork assembly, metal framing, gusset plate and steel tube fastening. The SteelZIP Econo line of self drilling fasteners are imported from Taiwan and have a zinc plating. Available in mill finish only. Available for order in full box quantities only.

Hex Head (HWH) Light to Medium Gauge

Size	Point	Qty/Box	Part#
#8 x 1/2"	SD2	10,000	DMI4HWKZ08012
#8 x 3/4"	SD2	10,000	DMI4HWKZ08034
#10 x 3/4"	SD3	6,000	DMISDNH10034
#10 x 1"	SD3	5,000	DMI4HWKZ10100
#10 x 2"	SD3	2,000	DMI4HWKZ10200
#12 x 3/4"	SD3	5,000	DMI4HWKZ12034
#12 x 1"	SD3	3,000	DMI4HWKZ12100
#12 x 1-1/2"	SD3	3,000	DMI4HWKZ12112
#14 x 1"	SD3	3,000	DMI4HWKZ14100
#14 x 1-1/4"	SD3	2,000	DMI4HWKZ14114
#14 x 2"	SD3	1,000	DMI4HWKZ14200

Heavy Ga Applications up to 1/2" thick steel

Size	Point	Qty/Box	Part#
#12 x 1-1/4"	SD5	2,000	DMI4HWKZ121145
#12 x 1-1/2"	SD5	2,000	DMI4HWKZ121125
#12 x 2"	SD5	2,000	DMI4HWKZ122005

Fastener	Pull out Ultimate 16ga
#8	705
#10	786
#12	842
#14	910



STEELZIP CTD & IMPAX SD COATED HWH SELF DRILLING SCREWS

Used for attachment of metal to metal applications such as steel framing and hat channel and metal deck attachment. Similar to the SteelZIP Econo self drill fasteners with the added corrosion protection of thicker galvanizing and VistaCoat or DMG85 corrosion resistant coatings. Most sizes of coated fasteners also come bagged in 250 count bags for easy distribution. B=Bulk

Hex Head (HWH) Light to Medium Gauge

Size	Point	Qty/Box	Part#
#8-16 x 3/4"	SD2	10,000 B	DMISDNHC834
#10-16 x 3/4"	SD3	5,000	DMI2793362
#12-14 x 1"	SD3	2,500	DMI2794234
#12-14 x 1-1/4"	SD3	2,500	DMI2795053
#12-14 x 1-1/2"	SD3	2,500	DMI2796234
#12-14 x 2"	SD3	2,000	DMI2796909
1/4-14 x 7/8"	SD1	2,500	DMI2797805 Stitch
1/4-14 x 1"	SD3	2,500	DMI2798553
1/4-14 x 1-1/4"	SD3	2,000	DMI2798810
1/4-14 x 1-1/2"	SD3	2,000	DMI2798973
1/4-14 x 3" R	SD3	1,000	DMI4SDNHC14300R

Hex Head (HWH) Heavy Gauge up to .500"

Size	Point	Qty/Box	Part#
#12-24 x 1-1/4"	SD5	2,500	DMI2795839
#12-24 x 1-1/2"	SD5	2,500	DMI2796618
#12-24 x 2"	SD5	2,000	DMI2783126
1/4-20 x 3"	SD5	1,000B	DMI21356393
1/4-20 x 4"	SD5	1,000B	DMI21356395
1/4-20 x 5"	SD5	600 B	DMI21356396
1/4-20 x 6"	SD5	500 B	DMI21356398
1/4-20 x 7"	SD5	500 B	DMI21356399
1/4-20 x 8"	SD5	500 B	DMI21356400



TEKS Brand FM, UL & ICC Approved MetalDeck Attachment Drill Screws

Used for attachment of metal deck to Steel applications on jobs that require UL or FM compliance. These TEKS fasteners come bulk packaged. Most sizes Made in the USA and have Climacoat silver coating.

Size	Point	Qty/Box	Part#
#12-24 x 1-1/4"	TEK5	2,500	DMI1006053
#12-24 x 1-1/2"	TEK5	2,000	DMI1070053
1/4-28 x 3"	TEK5	1,000	DMI1074000
1/4-28 x 4"	TEK5	500	DMI1075000
1/4-28 x 5"	TEK5	250	DMI1641000
1/4-28 x 6"	TEK5	250	DMI1431000
1/4-28 x 8"	TEK5	150	DMI1590000
#10-16 x 3/4"	TEK1	5,000	DMI1107053
#10 x 3/4" is for deck to deck stitch/lap.			



PANCLIP-SD LOW PROFILE HEAD SELF DRILLING MTM

Panclip low profile pancake head mated to a self drilling drill point for drill and tap performance into metal and steel substrates. PANCLIP-SD features the 1000hr DMG85 silver coating to meet FBC1506.6 and other corrosion resistance requirements. Select sizes are also available in 410SS with DMG85 corrosion resistant coating. Packaged in 250 count bags.

PANCLIP SD - DMI CS SILVER COATED

Available Sizes	Qty/Box	Part# 1000hr
#10-16 x 1"	SD2 5,000	DMIPD210100C
#10-16 x 1-1/2"	SD2 2,500	DMIPD210150C
#12-14 x 1"	SD3 5,000	DMIPD312100C
#12-14 x 2"	SD3 2,000	DMIPD312200C
1/4-20 x 1-1/2"	SD4 2,500	DMIP414150TC
1/4-20 x 5"	SD4 1,000	DMIP414500TC
1/4-20 x 7"	SD4 1,000	DMIP414700TC

PANCLIP SD-SS 410SS Stainless + DMG85

Available Sizes	Qty/Box	Part# 1000hr
#10-16 x 3/4"	SD3 5,000	DMIP41075DC
#10-16 x 1"	SD3 5,000	DMIP41010DC
#12-14 x 2"	SD3 2,000	DMIP41220DC



WOOD TO WOOD FASTENERS & WOOD TO METAL FASTENERS

ECONO DECKING FASTENERS

Decking screws are used in wood to wood applications such as 1" x 4" to plywood. Other popular uses include installation of tile and shake roofing, exterior fencing and exterior wood deck structures. Econo decking screws have a countersink style bugle head with a #2 square drive, 500hr silver coating and coarse thread for maximum hold into wood substrate.



Stock	Sizes	Qty/Box	Part#
#8 x 2-1/2"		2,500	DMI4BPCDS08212
#8 x 3"		2,000	DMI4BPCDS08300

Special Order	Sizes	Qty/Box	Part#
#10 x 3-1/2"		1,500	DMI4BPCDS10312
#10 x 4"		1,000	DMI4BPCDS10400
#10 x 5"		1,000	DMI4BPCDS10500
#10 x 6"		1,000	DMI4BPCDS10600

Available in full box quantities only.

PREMIUM DECKING FASTENERS (BAGGED)

Decking screws are used in wood to wood applications such as 1" x 4" to plywood. Other popular uses include installation of tile and shake roofing, exterior fencing and exterior wood deck structures. Premium decking screws have a countersink style bugle head with a 6 lobe or a #2 square drive, and a green long-life coating. Packaged 250/bag.



Stock	Sizes	Drive	Qty/Box	Part#
#9 x 2-1/2"		T25	2,000	DMI4DA9250T25B
#9 x 3"		S2	1,500	DMI4DA9300S2B

Larger #9 diameter, coarse thread and TP-17 cutpoint for improved holding into wood substrates and to limit splitting of 1" x 4" on installation.

305 STAINLESS STEEL TILE FASTENERS / 305 STAINLESS STEEL DECKING FASTENERS

When you need true corrosion resistance for applications such as clay or concrete tile installation into wood substrates, choose our full 305 stainless steel decking screws. Square flat head #2 Sq drive, #8 x 2" and 2-1/2" feature a TP-17 cutpoint. Available in full box quantities only.



Stock	Sizes	Qty/Box	Part#
#8 x 2"		3,000	DMI1SS08200
#8 x 2-1/2"		2,500	DMI1SS08212
#10 x 2-1/2"		2,000	DMI1SS10212
#10 x 3"		1,500	DMI1SS10300

Special Order	Sizes	Qty/Box	Part#
#8 x 1-1/4"		5,000	DMI1SS08114
#8 x 1-5/8"		4,000	DMI1SS08158
#10 x 3-1/2"		1,000	DMI1SS10312
#10 x 4"		1,000	Discontinued

PREMIUM WOOD TO METAL FASTENERS

XLP WTM SD3 with extra low profile pancake wafer head for installing plywood, OSB, MDF and dimensional lumber to metal deck and steel up to 14 ga in thickness. Special white DMG85 full coating for corrosion protection. **WTM SD4** is designed to install dimensional lumber (2x) to steel substrates up to 1/4" thick. Breakaway wings and countersink head allows for a flush surface after installation. Green DMG85 coating is designed for use with pressure treated lumber. 250/bag



XLP WTM to metal up to 6 ga SQ2, SD3 White
Available Sizes Qty/Box Part# (250/bag)
#10-16 x 1-7/8" 2,500 DMIXLP101780S3
Popular for plywood & OSB decking or 1"x4" dimensional lumber to metal deck or purlins.

WTM from 14 ga to 1/4" SQ3, SD4 Green
Available Sizes Qty/Box Part# (250/bag)
#14-20 x 2-3/4" 1,500 DMIXLP122750S4
#14 x 3" Gray ITW 1,000 DMI1096000
Popular for 2"x4" dimensional lumber to C, Z or I purlin applications, 0.07" to 0.25" thick steel.

CONNEXTITE STRUCTURAL WOOD SCREWS

Ideal for single and multi-pl truss, column, header and joist applications.

- Large flange maximizes clamping force for the tightest connections.
- Aggressive thread design draws connections together for fast assembly.
- Special point cuts through the densest lumber without splitting.
- Reamer knurl reduces driving torque.
- TORX drive provides a positive stick fit allowing for one handed installation.
- Proprietary coating meets or exceeds corrosion resistance of hot-dipped fasteners coated in accordance with ASTM A153
- Approved for structural connections per IBC 1703
- Installs using a standard impact gun.



The ConnexTite™ Advantage

ConnexTite™ vs. Carriage Bolt

Application	Attachment Technique	Design Value	The ConnexTite Advantage
	 (1) 1/2" x 6" Carriage Bolt	1150 lbs shear in SYP	Installation Time: 2X Faster Installed Cost: 25% Lower Lateral Design: Equivalent
	 (8) 5/16" x 4" ConnexTite	1140 lbs shear in SYP	

ConnexTite™ vs. 40D Ring Shank Nail

Application	Attachment Technique	Design Value	The ConnexTite Advantage
	 (2) 40D Ring Shank Nail	416 lbs Pull-out in SYP	Installation Time: 6X Faster Installed Cost: 23% Lower Withdrawal Design: 6% Higher
	 (1) 1/4" x 5-1/2" ConnexTite	440 lbs Pull-out in SYP	

ConnexTite™ Selection

Material No.	Diameter	Length	Thread	Package	Quantity
1550568	1/4"	1-1/2"	Full	Pail	2000
1550569	1/4"	2-3/4"	Full	Pail	800
1550581	5/16"	2-3/4"	Part	Pail	500
1550582	5/16"	3-1/8"	Full	Pail	500
1550583	5/16"	4"	Part	Pail	400
1550585	5/16"	5-1/2"	Part	Pail	300

HEX HEAD HWH BLUE CONCRETE SCREW

Carbon Steel Masonry screw type anchor with blue TFL corrosion resistant coating. Designed for medium duty application in C.I.P concrete, hollow core block, solid block, brick or any other masonry material. Drill bit included in each box of 100 pieces. After predrill this anchor cuts threads into concrete and can be removed for adjustment, shimming, leveling and re-driven in to the same hole. Slotted hex head drive popular for non-low profile and non-countersink applications such as attachment of metal junction boxes to masonry. Imported.



Stock Sizes	Qty/Box	Qty/Ctn	Part#
1/4" x 1-1/4"	100	1000	DMI4HWHB14114
1/4" x 1-3/4"	100	1000	DMI4HWHB14134
1/4" x 2-1/4"	100	1000	DMI4HWHB14214
1/4" x 2-3/4"	100	1000	DMI4HWHB14234
1/4" x 3-1/4"	100	1000	DMI4HWHB14314

S.O. Sizes	Qty/Box	Qty/Ctn	Part#
1/4" x 3-3/4"	100	500	DMIT3163407
1/4" x 4"	100	500	DMIT3165407

One drill bit comes in every 100 count box

S.O. sizes are available by special order minimums will apply.

PFH BLUE CONCRETE SCREW

Carbon Steel Masonry screw type anchor with blue TFL corrosion resistant coating. PFH Phillips drive head style. Designed for medium duty application in C.I.P concrete, hollow core block, solid block, brick or any other masonry material. Drill bit included in each box of 100 pieces. After predrill this anchor cuts threads into concrete and can be removed for adjustment, shimming, leveling and re-driven in to the same hole. Popular countersink installations include: wood headers and furring strips to masonry, HVAC strapping to masonry, plywood backer boards to masonry, and exterior insulation systems to masonry.



Stock Sizes	Qty/Box	Qty/Ctn	Part#
1/4" x 1-1/4"	100	1000	DMI4PFHB14114
1/4" x 1-3/4"	100	1000	DMI4PFHB14134
1/4" x 2-3/4"	100	1000	DMI4PFHB14234
1/4" x 3-1/4"	100	1000	DMI4PFHB14314

S.O. Sizes	Qty/Box	Qty/Ctn	Part#
1/4" x 3-3/4"	100	500	DMIT3193407

One drill bit comes in every 100 count box

S.O. sizes are available by special order minimums will apply.

Imported.

410 STAINLESS STEEL HWH CONCRETE SCREW

Hex head screw with 410 stainless steel with a silver longlife corrosion resistant coating. A stainless steel masonry anchor that cuts threads into concrete, brick or hollow block. Popular uses include: securing exterior fixtures to concrete, masonry walls and flooring. Removable, slotted hex head with extended corrosion protection from the 410 SS and Silver DMG85 coating.



Stock Sizes	Qty/Box	Qty/Ctn	Part#
1/4" x 1-1/4"	100	1700	DMICSH41415T

S.O. Sizes	Qty/Box	Qty/Ctn	Part#
1/4" x 1-3/4"	100	500	DMIT3368907
1/4" x 2-1/4"	100	500	DMIT3369907
1/4" x 3-1/4"	100	500	DMIT3371907
1/4" x 3-3/4"	100	500	DMIT3372907

One drill bit comes in every 100 count box

Additional sizes may be available by special order.

Imported.

STAINLESS STEEL TAPCON™ 410 SS MASONRY SCREW PFH HEAD

Tapcons made of 410 stainless steel with a silver longlife corrosion resistant finish. A stainless steel masonry anchor that cuts threads into concrete, brick or hollow block. Popular uses include: Wood headers and furring strips to masonry, HVAC strapping to masonry, plywood backer boards to masonry, and exterior insulation systems to masonry. Removable, Phillips flat head, Made in the USA.



Sizes	Qty/Box	Qty/Ctn	Part#
3/16" x 1-1/4"	100	500	Special Order
3/16" x 1-3/4"	100	500	Special Order
1/4" x 1-1/4"	100	500	DMIT3373907
1/4" x 1-3/4"	100	500	DMIT3374907
1/4" x 2-1/4"	100	500	Special Order
1/4" x 2-3/4"	100	500	DMIT3376907
1/4" x 3-1/4"	100	500	Special Order
1/4" x 3-3/4"	100	500	Special Order

One drill bit comes in every 100 count box

Additional sizes may be available by special order.

PAN*CON SS - MASONRY OR WOOD

A new design in masonry substrate fastening. The PAN*CON is the combination of the low profile Panclip head and a HILO concrete threaded shank. This 410 Stainless Steel PAN*CON features a DMG85 Silver corrosion resistant coating exceeds ASTM B117 and FBC 1506.6 standards for excellent corrosion protection. SQ2 drive. Packaged in 100 piece boxes with a drill bit included. Popular for termination bar, Duraclad and standing seam attachment to masonry. The PAN*CON is also an excellent substitute for HWH masonry screw applications.



Pan*Con 410 SS C Point SQ2 Drive		
Available Sizes	Qty/Case	Part#
#14 x 1-1/2" SQ2	1,700	DMIPC41415T
#14 x 2-3/4" SQ2	1,600	DMIPC414275T

Pan*Con 410 SS C Point SQ2 Drive	S.O. Sizes	Qty/Case	Part#
#14 x 4"	SQ2	1,200	DMIPC414400T
#14 x 6"	SQ2	1,200	DMIPC414600T

One drill bit comes in every 100 count box

S.O. sizes are available by special order minimums & lead times will apply. Imported.

BI-METAL STAINLESS STEEL PREMIUM & 316 CORROSION RESISTANT FASTENERS

Bi-Metal SS Advantage: When selecting a stainless steel fastener for any application where minimizing or virtually eliminating corrosion is the goal, a specifier should strongly consider the dramatically greater benefits of 300 series over 400 series stainless steel fasteners. The richer chemical composition and required blade (Bi-Metal) or welded drill point make 300 series stainless steel fasteners more costly, but the corrosion resistance benefits are far superior. Direct Metals offers Bi-Metal Fasteners for wood or steel substrates that self drill and self tap the panels and substrates saving significant installation time.

EXPOSED FASTENER PANEL TO WOOD

#9 BI-METAL HEX & LOW PROFILE

304 STAINLESS STEEL BI-METAL Sharp Point

Full 304 series stainless steel fastener capable of penetrating metal roofing panels without pre-drilling. Carbon steel fused tip technology allows this fastener to self tap and provide years of corrosion free performance, backed up by a 40 year limited warranty. 1/4" hex head drive, 1/4 LSC driver suggested for installation. This is the suggested fastener for installation into ACQ & MCQ pressure treated lumber. Available to be painted to match our standard colors on a special order basis.

Made in Czechoslovakia

Pull out	Lbs Ultimate
2x Pine	Shear: 1550
1" Penetrat :542	Tensile: 1657
1-1/2" Pen: 748	Torsi 50 inlbs



Available Sizes	Qty/Box	Part#
#9 x 1"	3,000	DMI2E4160CUF
#9 x 1-1/2"	2,500	DMI2E4260CUF
#9 x 2"	2,000	DMI2E4380CUF
#9 x 2-1/2"	1,500	DMI2E4460CUF

SELF DRILLING METAL TO METAL FASTENERS

304 STAINLESS STEEL BI-METAL SELF DRILL

If you are looking for the highest in corrosion resistance in a self drilling screw look no further. The fused Bi-Metal self drilling point allows you to achieve the corrosion resistance of austenitic 304 stainless steel without having to pre-drill your fastener. Head and shank of the

screw is 304 series stainless steel. A 25 year warranty against red rust on head and body of screw is available. The #12 fasteners have a 5/16 HWH drive, #14 have a 3/8" HWH drive.

LSC spring clip drivers are suggested.

Made in Czechoslovakia

Pull out (12-14)	Lbs Ultimate
12ga:1282	Shear: 2149
14ga: 908	Tensile: 2743
16ga: 703	Torsi 70 inlbs



HWH No Washer	Drill Point	Part#
1/4-14 x 1"	SD3	DMI21558126
1/4-14 x 1-1/2"	SD3	DMI21558128
1/4-14 x 2"	SD3	DMI21558129
1/4-20 x 1-1/8"	SD4	DMI21558132
1/4-20 x 1-1/2"	SD4	DMI21558133
1/4-20 x 2"	SD4	DMI21558134
1/4-20 x 2"	SD5	DMI21558130
1/4-20 x 4"	SD5	DMI21558131

HWH w/Bd-Washer	Qty/Box	Part#
#12 x 1-1/4" SD3	500	DMI21122767
#12 x 2-1/8" SD3	250	DMI21133684
#12 x 1-9/16" SD5	500	DMI20770785
#12 x 1" Stitch SD1	250	DMI21123164

CONCEALED FASTENER PANEL TO WOOD

316 STAINLESS STEEL PANCLIP-SS MTW

Our highest level of corrosion resistant Panclip-SS fasteners are now available full 316 Stainless Steel construction. 2 sizes are available a #10-9 x 1-1/2" TP-17 Point and a #12-11 x 1-1/2" Sharp Point. These fasteners feature a low profile pancake head for installing standing seam panels, concealed panel clips, windows or fixtures into wood substrates. Ideal for coastal applications or when a high level of corrosion resistance is required. Made in Taiwan.

316 SS #2SQ	Qty/Box	Part# 250/bag
#10 x 1-1/2" TP17	2,500	DMIP3161015D
#12 x 1-1/2" SP	2,500	DMIP3161215D



316 STAINLESS STEEL #43 RIVETS

Blind rivets fasten joints without access to the reverse side of the sheet metal. DMI #43 painted stainless steel rivets are manufactured of our highest level of corrosion resistant 316 stainless steel. DMI 316SS rivets exceed the corrosion resistant standards put forth in Florida Building Code section 1506.6. DMI also Rivet length is measured to the end of the rivet body. A #43 rivet has a 1/8" diameter body with a 5/16" body length. Its grip range is material from .12" to .187" (1/8" - 3/16"). Available only in mill finish, 250 / bag



Painted SS	Qty/Box	Part#
#43 316SS	6,000	DMI43316SS

PANCLIP - for applications that require a low profile head with large flat under head load bearing surface. The Panclip head combines a larger clamping surface than a PFH fastener and a lower profile than a HWH or hex head fastener. Designed primarily for the installation of standing seam metal roofing panel clips. The Panclip has many other applications such as window, door, fixture, liner panel, cladding and siding panel installations. Panclip fasteners are now available for wood (MTW), steel (MTM) or wood to metal (WTM) applications.

#10 PANCLIP MTW - 1000 HR COATED

DMI's "standard" fastener for low profile fastening applications to wood substrates. This #10-9 fastener is a carbon steel fastener with E zinc galvanizing and DMG85 corrosion resistant coating. This fastener meets Miami-Dade and Florida Building Code requirements and has been corrosion tested to exceed ASTM B117 and G85 FBC 1506.6 and Miami-Dade requirements. Silver parts Miami-Dade Product Listing #L16-0706.02 come with a SQ2 drive. White colored Panclip fasteners are also available for use in window and liner panel applications. All Panclip MTW screws feature a TP-17 point and are packaged 250 pcs per bag.



Substrate	Pull out
1" x 4" Pine	665 lbs
1/2" Plywood	387 lbs
7/16 (1/2") OSB	192 lbs

DMI SILVER COATED MIAMI-DADE LISTED		
Available Sizes	Qty/Box	Part# 1000hr
#10 x 1"	TP17 5,000	DMIPD10100T
#10 x 1-1/2"	TP17 2,500	DMIPD10150T
#10 x 2"	TP17 2,000	DMIPD10200T
#10 x 2-1/2"	TP17 2,000	DMIPD10250T

MIAMI-DADE COUNTY LISTED

#L16-0706.02

WHITE/BRIGHT WHITE COATED

Available Sizes	Qty/Box	Part# 1000hr
#10 x 1"	TP17 5,000	DMIPD10100WT
#10 x 1-1/2"	TP17 2,500	DMIPD10150WT
#10 x 2"	TP17 2,000	DMIPD10200WT
#10 x 2-1/2"	TP17 2,000	DMIPD10250WT
#10 x 3"	TP17 1,500	DMIPD10300WT

PANCLIP SP MTW - 1000 HR COATED

Panclip fastener designed for clip installation into dimensional lumber wood substrates. Full Silver DMG85 coating and sharp point. Meets FBC 1506.6 and Miami Dade requirements. Available in older design thread patterns specified in some approved systems. Packaged 250 pcs / bag



PANCLIP SP MTW CTD SHARP POINT P2/S2		
Available Sizes	Qty/Box	Part#
#10-13 x 1" R2	5,000	DMIPDX1010BA
#12-11x 3/4" SP	5,000	DMIPD123411T
#12-11x 1" SP	5,000	DMIPD121011T
#12-11x 2" SP	2,000	DMIPD122011T

MIAMI-DADE COUNTY LISTED

#10 #L16-0706.01
#12 #L16-0706.05

PANCLIP ECONO - MTW

Panclip MTW fastener at a lower cost with the same specifications and design as the above Panclip DMG85 coated parts without the additional corrosion resistant coatings. Yellow E zinc plating only, SQ2 drive. Packaged 250 pcs / bag. Not for use in Florida, consult your local building codes before purchase.



PANCLIP ECONO Yellow E Zinc TP-17 Point		
Available Sizes	Qty/Box	Part#
#10-9 x 1" TP-17	5,000	DMIPD1010ZTS
#10-13 x 1-1/4" SP	5,000	DMIPD10125ZTS
#10-9 x 1-1/2" TP-17	2,500	DMIPD1015ZTS

Silver E Zinc Sharp Point PH2/SQ2 (not shown)

Available Sizes	Qty/Box	Part#
#10-12 x 1" Type A	5,000	DMIPD1010WZ

PANCLIP-SD-L LONG LENGTH PANCAKE

#14-13 Panclip fastener designed for clip installation through insulation into wood or light gauge metal up to 16 ga. Also popular for insulated panel, bearing plate or nailboard installation. Available in carbon steel with corrosion resistant 1000 hr DMG85 black coating exceeds ASTM B117 and FBC 1506.6 standards.



PANCLIP SD-L COATED BLACK B=BULK		
Available Sizes	Qty/Box	Part#
#14 x 1-1/2"	2,500	DMIPL1415D
#14 x 3"	2,000 B	DMIPL1430D
#14 x 4"	1,000 B	DMIPL1440D
#14 x 5"	1,000 B	DMIPL1450D
#14 x 6"	1,000 B	DMIPL1460D
#14 x 7"	1,000 B	DMIPL1470D
#14 x 8"	500 B	DMIPL1480D

MIAMI-DADE COUNTY LISTED

#L16-0706.03

PAN*CON SS - MASONRY OR WOOD

410 Stainless Steel Panclip fastener designed for installation into predrilled masonry/concrete or wood. DMG85 Silver corrosion resistant coating exceeds ASTM B117 and FBC 1506.6 standards. SQ2 drive. Packaged in 100 piece boxes with a drill bit included. Popular for termination bar, Dura-clad and standing seam attachment to masonry.



Pan*Con 410 SS C Point SQ2 Drive		
Available Sizes	Qty/Case	Part#
#14 x 1-1/2" SQ2	1,700	DMIPC41415T
#14 x 2-3/4" SQ2	1,600	DMIPC414275T

Pan*Con 410 SS C Point SQ2 Drive		
Special Order Sizes	Qty/Case	Part#
#14 x 4" SQ2	1,200	DMIPC414400T
#14 x 6" SQ2	1,200	DMIPC414600T

STAINLESS STEEL PANCAKE & XLP PANCLIP FASTENERS

PANCLIPSS MTW - 300 STAINLESS STEEL Now available in 304SS or 316SS

#10-9 PanclipSS with low profile pancake head for installing standing seam panels, concealed panel clips, windows or fixtures into wood substrates. Ideal for coastal applications or when a high level of corrosion resistance is required. Corrosion resistance exceeds ASTM B117 and G85 standards. Miami-Dade Listing# L15-0209.10. SQ2 drive with TP-17 with extra low profile head. #10 x 1-1/2" & #12 x 1-1/2" now available in 316SS. Packaged 250 pcs / bag.



#L15-0602.01

304 SS, #2SQ, TP-17 Low Profile L15-0209.10		
Available Sizes	Qty/Box	Part#
#10 x 1" SQ2 TP17	5,000	DMIP31010D
#10 x 1-1/2" SQ2 T17	2,500	DMIP31015D
#10 x 2" SQ2 TP17	2,000	DMIP31020D

MIAMI-DADE COUNTY
LISTED

#L15-0602.01

Additional Sizes 304 SS, SQ2/PH2 Sharp Point		
Available Sizes	Qty/Box	Part#
#12-11 x 3/4" A SP	5,000	DMIP31234D
#12-11 x 1-1/2" 316	2,500	DMIP3161215D
316 SS #2SQ	Qty/Box	Part#
#10 x 1-1/2" TP17	2,500	DMIP3161015D

PANCLIP-SD-SS-L STAINLESS STEEL

#14-13 Stainless Steel Panclip fastener designed for clip installation through insulation into wood or light gauge metal up to 18 ga. Also popular for insulated panel, bearing plate or nailboard attachment to metal deck. 410 Stainless steel base material with DMG85 Silver corrosion resistant coating exceeds ASTM B117 and FBC 1506.6 standards. SQ2 drive, bulk packaged.



PANCLIP SD-SS-L 410SS DMG85 SILVER

Available Sizes	Qty/Box	Part#
#14 x 1-1/2"	2,500	DMIP41415D
#14 x 3"	1,000	DMIP41430D
#14 x 5"	500	DMIP41450D
#14 x 7"	500	DMIP41470D

PANCLIP XLP - The XLP is for applications that demand an extra low profile head that almost sits flush with the sheet metal that it is securing. Designed primarily for the installation of nail-strip / nail-fin standing seam metal roofing panels. The XLP can be used in many other applications that require an extra low profile installed finish with more holding or bearing surface than a PFH flat head fastener can provide.

PANCLIP XLP MTW NAILSTRIP FASTENER

With extra low profile pancake wafer head for installing nail strip style standing seam panels into wood substrates. XLP MTW comes standard with DMG85 Silver corrosion resistant coating designed to exceed Florida Building Code and Miami-Dade County requirements. The XLP's larger #12-8 diameter provides superior holding strength vs. competing #10 fasteners into wood substrates. The XLP has a sharp point and #2 Square drive for ease of installation. Packaged 250 pcs / bag.



XLP MTW 1000 HR Silver Coated, SQ2, SP

Available Sizes	Qty/Box	Part#
#12-8 x 1"	5,000	DMIPXLP121SD
#12-8 x 1-1/2"	2,500	DMIPXLP1215SD

MIAMI-DADE COUNTY
LISTED

#L16-0706.04

PANCLIP XLP SS STAINLESS STEEL NAILSTRIP FASTENER

The XLP SS is made of passivated 304 Stainless Steel for corrosion protection. The XLP head is made as low profile as possible to provide a pleasing installed appearance. The XLP has a sharp point and #2 Square drive for ease of installation. Packaged 250 pcs / bag.



XLP SS MTW 304 Stainless Steel, SQ2, SP

Available Sizes	Qty/Box	Part#
#12-8 x 1" 304SS	5,000	DMIPXLP121SS
#12-8 x 1-1/2" 304SS	2,500	DMIPXLP1215SS

XLP-SD WOOD TO METAL FASTENER FOR DECK ATTACHMENT

XLP WTM SD3 with extra low profile pancake wafer head for installing plywood, OSB, MDF and dimensional lumber to metal deck and steel substrates. White coated DMG85 250 pcs / bag.



XLP WTM SD3, SQ2, Metal 22ga up to 6 ga

Available Sizes	Qty/Box	Part#
#10-16 x 1-7/8"	2,500	DMIXLP101780S4
Popular for plywood & OSB decking or 1"x4" dimensional lumber to metal deck or purlins.		

WTM to 14 ga to 1/4" SQ3, SD4 Green

Available Sizes	Qty/Box	Part#
#14-20 x 2-3/4"	1,500	DMIXLP122750S4
Popular for 2"x4" dimensional lumber to C, Z or I purlin applications, 0.07" to 0.25" thick steel.		

SNAP LOCK STANDING SEAM METAL PANEL CLIPS

DMI SNAPLOCK PANEL CLIPS

Designed for secure fastening of snap lock style standing seam/concealed fastener metal roofing systems. Most styles available in G-90 galvanized or stainless steel. Panel clips can be manufactured to fit panels from most brands and styles of roll forming machines. Please specify make and model of machine when ordering. Most styles are designed with built in fastener relief to help eliminate panel dimpling. Made in the U.S.A. (full box orders only)



1-3/4" Snaplock Ultra Length HD
Fits 1-3/4" Snaplock Panels (1-7/8")
fits Quadro, RF, Newtech 675, D175S
Knudson & ES2000, US 175
18 ga steel or SS, 2 hole, 3-1/2" width

Gauge	Qty/Box	Part#
18G Galv	250	CSN134312G18V
18G SS	250	CSN134312S18V



1-1/2" Snaplock Ultra Length QSL HD
Fits 1-1/2" Snaplock Panels
fits Quadro & E 1500
18 ga steel or SS, 2 hole, 3-1/2" width

Gauge	Qty/Box	Part#
18G Galv	125	CSN112312G18Q
18G SS	250	CSN112312S18Q



1-3/4" Snaplock Econo Clip
Fits 1-3/4" Snaplock Panels (1-7/8")
fits Quadro, Rollformer, Newtech 675,
Knudson, Zimmerman & E US 175
18 ga steel or SS, 3 hole, 2-1/4" width

Gauge	Qty/Box	Part#
18G Galv	400	CSN134214G18
18G SS	400	CSN134214S18



1-1/2" Snaplock Econo QSL
Fits 1-1/2" Snaplock Panels
fits Quadro & E 1500
20 ga steel or SS, 3 hole, 2-1/4" width

Gauge	Qty/Box	Part#
20G Galv	500	CSN112214G20Q
20G SS	500	CSN112214S20Q



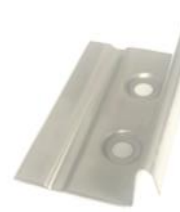
1-1/4" Snaplock Econo QSL
Fits Utility Panels, fits Quadro
24 ga steel 2" width

Gauge	Qty/Box	Part#
24G Galv	600	CSN11420G24QSL



1-1/2" Snaplock NT550 HD Clip
Fits Newtech 550
20 ga steel or SS, 2 hole, 3-1/2" width

Gauge	Qty/Box	Part#
20G Galv	300	CSN112916G20NHD
20G SS	300	CSN112916S20NHD



1" Zimmerman SL1000
Fits 1", 1-1/2" Zim Snaplock Panels
24 ga steel or 304SS, 2 hole, 3" width

Gauge	Qty/Box	Part#
24G Galv	500	CSN112916G24Z
24G SS	500	CSN112916S24Z



1-1/2" Snaplock Newtech 450 NDF
Fits Modified 450 panel, no fastener relief
dimples and flat tongue.
Fits Newtech 450 and EA1000, D450
24 ga steel or SS, 2 hole, 2" width

Gauge	Qty/Box	Part#
24G Galv	600	CSN11420G24UNDF
24G SS	600	CSN11420S24UNDF



1" Snaplock Rollformer Corp Clip
Fits 1" Snaplock Panels
Fits Rollformer
22 ga steel or 304SS, 2 hole, 2" width

Gauge	Qty/Box	Part#
22G Galv	1000	CSN100200G22RF
22G SS	1000	CSN100200S22RF



1-1/4" Snaplock Utility 450 LD Clip
Fits " Snaplock Econo Panels
Fits Newtech 450 and EA1000, D450
24 ga steel or SS, 2 hole, 2" width

Gauge	Qty/Box	Part#
24G Galv	600	CSN11420G24U
24G SS	600	CSN11420S24U

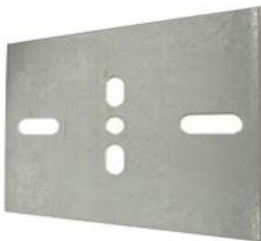
DMI BATTEN CLIPS - Batten Clip with dog ears. Pre-folded for easier installation. Popular for radius battens. Made in the U.S.A. (full box orders only)

DMI UNIVERSAL BEARING PLATES - Create a load bearing surface for panel clips overtop of insulation boards. Made in the U.S.A. (full box orders only)



Batten Seam Clip
24 Galv or Stainless, 2 hole, 2" width
11/16" Down leg, Pre-folded, Dog Ears

Size	Gauge	Qty/Box	Part#
1"	24G Galv	1000	CBC1020G24
1"	24G 304SS	1000	CBC1020S24



Universal 4" x 5" slotted

Size	Gauge	Qty/Box	Part#
4" x 5"	20ga G90	250	UBP4620G
4" x 5"	20ga 304SS	250	UBP4520S

DMI MECHANICAL LOCK PANEL CLIPS

Designed for secure fastening of mechanical lock style standing seam / concealed fastener metal roofing systems. Most styles available in G-90 galvanized, painted steel or stainless steel. Panel clips can be manufactured to fit panels from most brands and styles of roll forming machines. Please specify make and model of machine when ordering. Made in the U.S.A. (full box orders only). Most styles are engineered to give fastener relief, and heights of clips are listed in panel height. 1" tall panel would use 1-1/8" tall clip, 1-1/2" panel would use 1-5/8" clip, etc.



1" Mechanical Lock (1-1/8")
7/16" Top fits RF, NT, KN, D100SS, EA1301, Galv or SS, 2 hole, 2" width

Gauge	Qty/Box	Part#
26G Galv	1,000	CMF1002716G26
24G SS	1,000	CMF1002716S24
26G SS	1,000	CMF1002716S26



1-1/2" Mechanical Lock (1-5/8")
7/16" Top fits RF, NT, KN, EA1300, D150SS Galv or Stainless, 2 hole, 2" width

Gauge	Qty/Box	Part#
24G Galv	1,000	CMF1502716G24
24G SS	1,000	CMF1502716S24 S.O.
26G Galv	1,000	CMF1502716G26
26G SS	1,000	CMF1502716S26



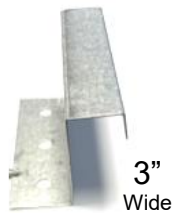
1-1/2" Mechanical Lock NFR(1-1/2")
7/16" Top fits Z1500, KR12, EA1300 US 1505, D150SS 2 hole, 2" width
NFR= No built in fastener relief this 1-1/2" panel clip is 1-1/2" in height.

Gauge	Qty/Box	Part#
26G Galv	1,000	CMF1372716G26



1-1/2" Mechanical Lock HD (1-5/8")
7/16" Top fits Z1500, EA1300, KR24, RF, US 1505 D150SS, 2or 3 hole, 3" width

Gauge	Qty/Box	Part#
24G Galv	500	CMF1503716G24
24G SS	500	CMF1503716S24



2"(2-1/8") Newtech Mechanical Lock
3/4" Top fits RF, NT Ultraseam, Knudson, E, 3 hole, 3" width.

Gauge	Qty/Box	Part#
24G Galv	600	CMF218334G24
24G SS	300	CMF218334S24 S.O.
22G Galv	600	CMF218334G22
22G SS	300	CMF218334S22 S.O.



2" Quadro Mechanical Lock
5/8" Top fits Quadro 3 hole, 3" width.

Gauge	Qty/Box	Part#
24G Galv	300	CMF218358G24 S.O.
24G SS	300	CMF218358S24 S.O.
22G Galv	300	CMF218358G22 S.O.
22G SS	300	CMF218358S22 S.O.

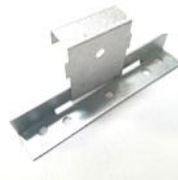
EXPANSION CLIPS FOR MECHANICAL LOCK PANEL CLIPS

Designed to allow for thermal expansion while providing secure fastening of mechanical lock style standing seam / concealed fastener metal roofing systems. The expansion style clips are available in 3 different styles one piece pre-assembled style, a two piece job site assembled and a butterfly style two piece job site assembled (Butterfly style is by special order only) . Most styles available in G-90 galvanized.



2" Newtech One Piece Expansion
3/4" Top fits Newtech Machines 2 hole, 4-3/8" width
No Assembly Required.
Galvanized G90 Top 22ga, Base 16G.
Stainless 304S Top 24ga, Galv Base 16G

Type	Qty/Box	Part#
Galvanized	100	CMEMLG200NT
Stainless	100	CMEMLS200NT



2" Newtech Two Piece Expansion
3/4" Top fits Newtech Machines 5 hole, 5 base width. This 2 piece clip requires field assembly. Each piece top and bottom sold separately.

Gauge	Qty/Box	Part#
Top 24G	1000	CMT2003416G24
Base 18G	500	CMB500G18



2" Quadro One Piece Expansion
5/8" Top fits Quadro Machines 2 hole, 4-3/8" width.
No Assembly Required.
Galvanized G90 Top 22ga, Base 16G.
Stainless 304S Top 24ga, Galv Base 16G

Gauge	Qty/Box	Part#
Galvanized	100	CMEMLG200QP
Stainless	100	CMEMLS200QP



1-1/2" Butterfly Style Expansion

2 hole, 4-3/8" width, Assembly Required. This product is produced to order, and is available in different gauges and materials. Consult your salesperson for options.

1-1/2" One Piece Expansion
fits Quadro & Newtech Machines 2 hole, 4-3/8" width, Assembly Required. Galvanized G90 Top 22ga, Base 16G. Stainless 304S Top 24ga, Galv Base 16G

Gauge	Qty/Box	Part#
Galvanized	100	CMEMLG150
Stainless	100	CMEMLS150

Getting to know DMI policies:

Shipping Policy:

Response Times and Same Day Shipping Cutoff Time:

DMI Florida, DMI Indiana, DMI Georgia service centers cutoff for same day shipping on in-stock products is **1:00 PM EST for LTL** pallet shipments and **3:00 PM EST for UPS** parcel service shipments.

Pennsylvania, New York, Illinois, California and Iowa service centers and partner warehouses order cutoff for same day shipping of in-stock items is **11:00 AM EST**. Painted items allow 3-7 days to ship.

The above shipping times apply to in-stock finished material at time of order. Materials that have to be painted, washed, packaged or manufactured will take additional lead time.

Freight Policy:

DMI freight terms are F.O.B. / freight charges will be additional. Some prepaid freight incentives are available on specific products shipping from the same service center on the same date. Please consult your DMI Distributor agreement and quotation for specifics on available prepaid freight incentives.

Return Policy:

All DMI distributors have the right to set their own policies with their customers including but not limited to: return, re-stock, pricing and terms of sale.

*DMI policy to our distributors is that all sales are considered final (**ALL SALES FINAL**). If DMI management will accept a return, it must be a standard stock product returned in original un-opened packaging, with a non-negotiable restocking fee. Any painted or special order product sales are final, no returns. Prior approval from Direct Metals, Inc management is required for any and all returns. No returns on sales older than **45 days**, regardless of circumstance. No returns on items longer than 6' in length including polycarbonate and PVC panels. **Re-stocking fee is 25%** of the invoice amount, in addition to all shipping costs to send original shipment and return product to a Direct Metals, Inc service center. All credits for qualifying returns will be given in the form of an account credit against new purchases. **No cash refunds available.***

2018 Sales Policies and Conditions:

Direct Metals, Inc. sells materials directly to our registered distributor network. We do not offer direct sales or new accounts to homeowners, contractors or installers; however we can assist you in finding the right product and your closest distributor.

If your company would like to apply to become a new registered DMI distributor, here are guidelines to see if you may qualify to join our distributor network.

Registered dealers must maintain a minimum stock of DMI products.

Registered dealers must purchase an average minimum of \$ 5,000.00 / month.

Registered dealers must offer products for resale and not intercompany use.

Registered dealers must maintain and provide a copy of a Tax exempt resellers license.

Registered dealers must have a strong financial background and be able to have credit approved by DMI.

Dealer applicants should be a minimum of 25 miles from any existing DMI dealer.

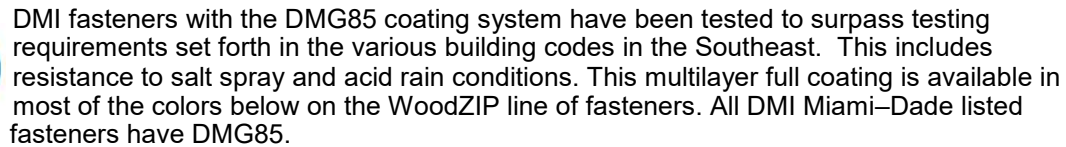
If your company does not meet all of the above criteria, DMI can assist you in creating a strong relationship with one of our very competitive distributors.

Information Policy:

DMI works to maintain to the best of our abilities correct and current information in our catalogs and on our websites. However data and information on our products and services can quickly become out of date without prior warning. Part numbers and box labels may change or vary from this catalog or DMI websites. The information presented is from sources believed to be reliable but no warranty (expressed or implied) is made regarding accuracy, adequacy, completeness, legality, reliability or usefulness of any of the information contained within this catalog or DMI websites.

Employment Policy:

The Equal Employment Opportunity Policy of DMI is to provide a fair and equal employment opportunity for all associates and job applicants regardless of race, color, religion, national origin, gender, sexual orientation, age, marital status or disability. DMI hires and promotes individuals solely on the basis of their qualifications for the job to be filled. DMI maintains a company handbook with internal policies of conduct and benefits. To inquire about employment opportunities with DMI, please email a resume to hr@directmetalsinc.com.

**DMG85**

VistaCoat fasteners are available with a full coat paint system. VistaCoat was developed to provide corrosion resistance above and beyond the industry 1000 hr salt spray standard (B117) on the whole fastener including the washer guard. Vista coat has built in UV resistance to combat paint fading and provides paint fade performance consistent with the top panel finishes in the industry. Vista coat is available on Woodgrip, Woodgrip XG, WoodZac, WoodMac and Impax self drilling fasteners in the standard colors below.

Direct Metals, Inc. also offers powder coated head paint systems on many of the Direct*Seal ST M-bit, ZXL and #12 SCAMP fasteners. Powder coated fasteners have excellent corrosion protection on the head and washer. Powder coating does not coat the whole fastener so galvanized and zinc platings are used to provide corrosion resistance on the shank and point portions of these fasteners. Powder coated fastener colors may vary slightly from the color chart below, minimums may apply.

Direct Metals, Inc. now offers 302/304 stainless steel #43 rivets in the standard colors noted below with a "R" in 250 count bag packaging. Additional colors in 100/bag packaging are designated with an "R100". These will be the only standard stock colors available in stainless steel rivets.

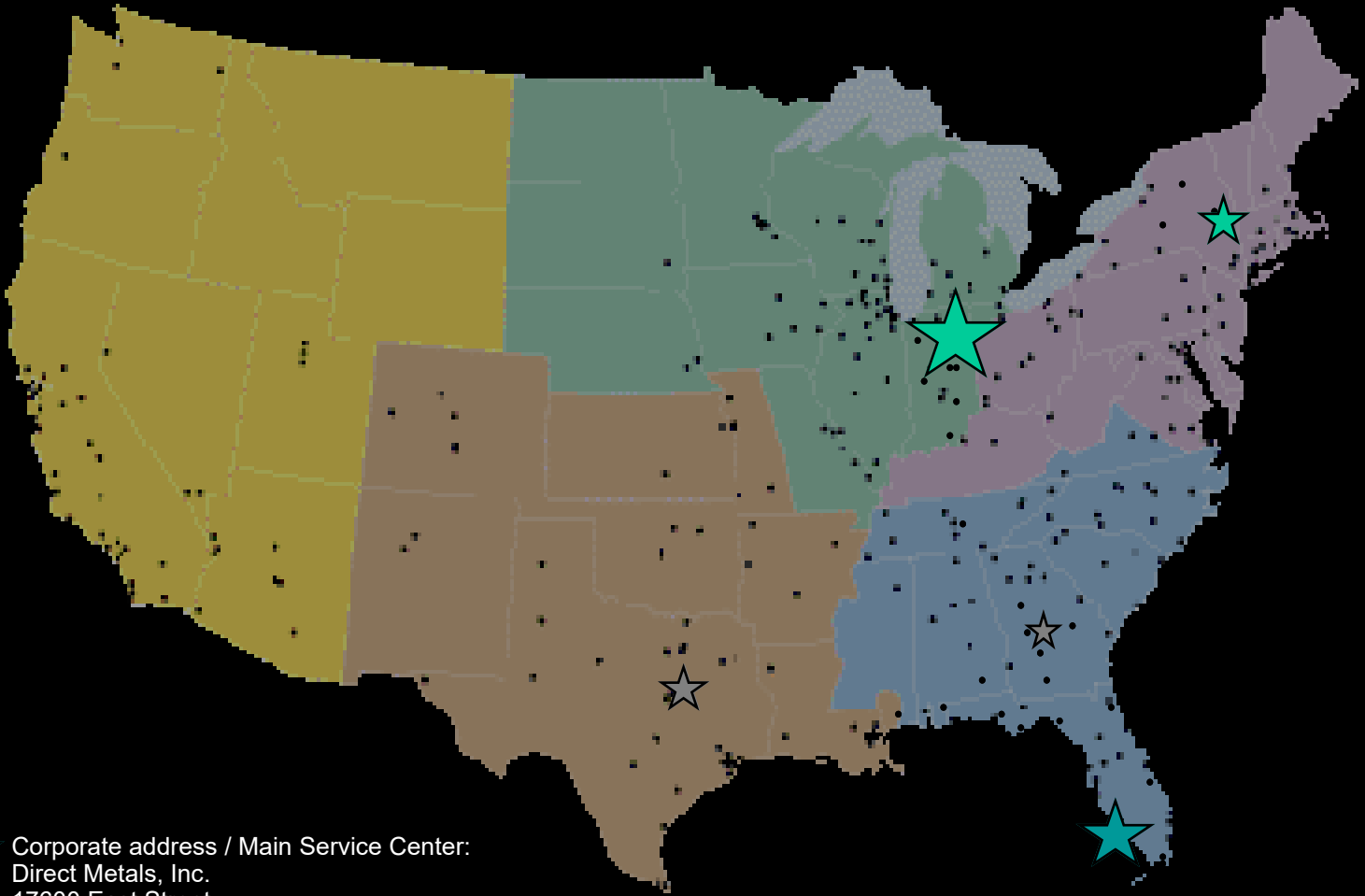
R	R				R			R	
014 Bright White	001 White	348 Std Bone White	330 Warm White	816 Sierra White	385 Patina	052 Teal Green	660 Hemlock	232 Evergreen	732 Denali Green
			R	R	R				R
422 Taupe/Clay	109 Sand Beige	415 Beige	248 Light Stone	548 Ivory	928 Terracotta	102 Crimson Red	798 Hartford/Fern	925 ClassicGreen	228 Forest Green
R		R		R	R				
020 Tan (STD)	230 Desert Brown	110 Cocoa Brown	374 Dark Brown	537 Medium Bronze	890 Red (STD)	691 Barn Red	074 Colonial Red	393 Burgundy	432 Blue Teal
R	SO	R	R	R		R		R	R
578 Old Town Gray	302 Pearl Gray	850 Ash Gray	324 Dark Bronze	042 Burnished Slate	023 Gloss Black	507 Matte Black	421 Navy	843 Gallery Blue	012 C./H. Blue
		R	R		Metallics	R	R	R	R
696 Pewter Gray	091 Zinc Gray	051 Charcoal Gray	416 Slate Gray		Metallic Paints >	1161 Silver	1160 Champagne	1162 Zactique	1116 Copper Penny

www.directmetalsinc.com



Distributor order entry or product inquiries:
Toll Free Phone: 855-800-8878
Toll Free Fax: 855-800-8877
orders@directmetalsinc.com
Website: www.directmetalsinc.com

We are proud to have over 1300 distributors across the United States of America. These distributors are serviced through our warehousing locations strategically placed to offer fast service and low shipping cost on our quality products.



★ Corporate address / Main Service Center:
Direct Metals, Inc.
17600 East Street
N. Ft Myers, FL 33917
Phone: 239-599-8527
Fax: 239-599-8545
Manager Email: andrew@directmetalsinc.com
Order tracking : tracking@directmetalsinc.com
Order entry : orders@directmetalsinc.com

★ Midwest Service Center:
Direct Metals of Indiana
1800 Jim Neu Drive, Suite 3
Plymouth, IN 46563
Phone: 574-935-3644
Fax: 574-935-3643
Order tracking : tracking@directmetalsinc.com
Order entry : orders@directmetalsinc.com

★ Future Service Center Coming Soon

Your Direct Metals, Inc. distributor is:



www.directmetalsinc.com