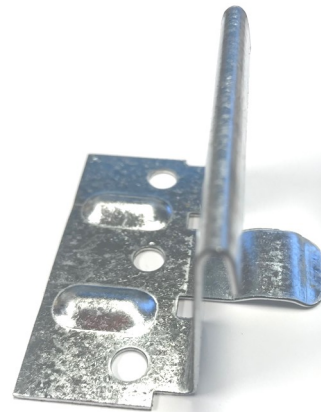


DM
DIRECT METALS INC.
**STANDING SEAM METAL
ROOFING ACCESSORY
MINI CATALOG 2018**





Toll Free Phone: 855-800-8878
Toll Free Fax: 855-800-8877
Website: www.directmetalsinc.com

Who is DMI?

Direct Metals, Inc. was founded by a team of experienced metal and fastener professionals. Direct Metals, Inc. has been supplying high quality materials and providing fast service since 1972. Product and application knowledge has allowed us to become one of the leading fastener and accessory master distributors in the United States of America. Over the past years, DMI has grown our abilities to support the building component industry. We are now providing components to manufacturers and distributors across our great Country. To find out more about the Direct Metals, Inc. line of products visit www.directmetalsinc.com

How can DMI help you ?

Increase ordering efficiency

DMI can offer the efficiency of many different accessory products from fasteners to pipe flashings, insulation to skylights, that can be shipped together. The efficiency of one shipment, one purchase order, and one customer service contact results in : lower costs, less paperwork, and less mistakes.

Decreasing lead times

DMI can offer same day shipping on most of our in-stock products. This allows distributors to carry lower stocking levels that can be replenished in a days notice instead of the cost of carrying months of inventory.

Access to more product choices

DMI offers many choices in products from entry level to premium grade products. We offer custom product manufacturing to complement our already large selection of on the shelf products. This allows your company the flexibility to offer your customers products that meet their specific wants and needs.

Access to product specialists

Not all manufacturers and distributors are the same. DMI invests in having qualified professionals available to answer technical and marketing questions. We offer training seminars, custom literature and other tools to help educate your sales team.

Guide Pages:

Low Profile Head Fasteners

Fasteners and Components

Pages 4-6

Blind Rivets

Stainless Blind Rivets

Pages 7,16

Rivet Color Chart

Page 16

Panel Clips

Snaplock Panel Clips

Page 8

Mechanical Lock Fixed Clips

Page 9

Mechanical Lock Expansion Clips

Page 9

Batten panel Clips

Page 8

Sealants

Butyl Roll Butyl Tape*

Page 10

Non Skinning Sealant

Page 10

Flashing Roll tape

Page 10

Rubber Flashings

Standard Pipe Flashings

Page 11

Retrofit / Electrical Mast Flashings

Page 11

End Cap Flashings

Page 12

Lightning Rod Flashings

Page 12

Ventilation

Razorback Ridgevent

Page 13

ProfileVent Ridgevent

Page 14

Universal Closure Rolls

*Direct*Seal and BG1*

Page 15

EMSEAL

Page 15

Sales & Return Policies

Sales and Return Policies

Page 15

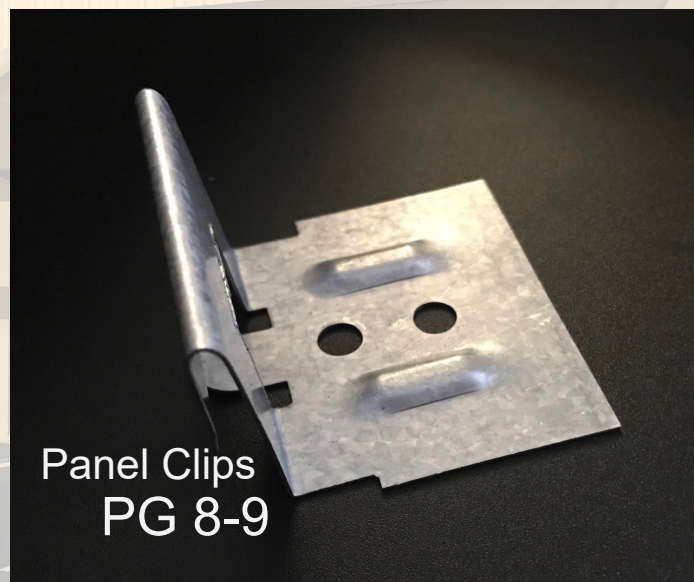
Order entry : orders@directmetalsinc.com

Toll Free Phone: 855-800-8878 Fax: 855-800-8877

Website: www.directmetalsinc.com



Panclip
PG 4-6



Panel Clips
PG 8-9



Sealants
PG 10

PANCLIP - for applications that require a low profile head with large flat under head load bearing surface. The Panclip head combines a larger clamping surface than a PFH fastener and a lower profile than a HWH or hex head fastener. Designed primarily for the installation of standing seam metal roofing panel clips. The Panclip has many other applications such as window, door, fixture, liner panel, cladding and siding panel installations. Panclip fasteners are now available for wood (MTW), steel (MTM) or wood to metal (WTM) applications.

#10 PANCLIP MTW - 1000 HR COATED

DMI's "standard" fastener for low profile fastening applications to wood substrates. This #10-9 fastener is a carbon steel fastener with E zinc galvanizing and DMG85 corrosion resistant coating. This fastener meets Miami-Dade and Florida Building Code requirements and has been corrosion tested to exceed ASTM B117 and G85 FBC 1506.6 and Miami-Dade requirements. Silver parts Miami-Dade Product Listing #L16-0706.02 come with a SQ2 drive. White colored Panclip fasteners are also available for use in window and liner panel applications. All Panclip MTW screws feature a TP-17 point and are packaged 250 pcs per bag.



Substrate	Pull out
1" x 4" Pine	665 lbs
1/2" Plywood	387 lbs
7/16 (1/2") OSB	192 lbs

DMI SILVER COATED MIAMI-DADE LISTED		
Available Sizes	Qty/Box	Part# 1000hr
#10 x 1"	TP17 5,000	DMIPD10100T
#10 x 1-1/2"	TP17 2,500	DMIPD10150T
#10 x 2"	TP17 2,000	DMIPD10200T
#10 x 2-1/2"	TP17 2,000	DMIPD10250T

MIAMI-DADE COUNTY LISTED

#L16-0706.02

WHITE/BRIGHT WHITE COATED

Available Sizes	Qty/Box	Part# 1000hr
#10 x 1"	TP17 5,000	DMIPD10100WT
#10 x 1-1/2"	TP17 2,500	DMIPD10150WT
#10 x 2"	TP17 2,000	DMIPD10200WT
#10 x 2-1/2"	TP17 2,000	DMIPD10250WT
#10 x 3"	TP17 1,500	DMIPD10300WT

PANCLIP SP MTW - 1000 HR COATED

Panclip fastener designed for clip installation into dimensional lumber wood substrates. Full Silver DMG85 coating and sharp point. Meets FBC 1506.6 and Miami Dade requirements. Available in older design thread patterns specified in some approved systems. Packaged 250 pcs / bag



PANCLIP SP MTW CTD SHARP POINT P2/S2		
Available Sizes	Qty/Box	Part#
#10-13 x 1" R2	5,000	DMIPDX1010BA
#12-11x 3/4" SP	5,000	DMIPD123411T
#12-11x 1" SP	5,000	DMIPD121011T
#12-11x 2" SP	2,000	DMIPD122011T

MIAMI-DADE COUNTY LISTED

#10 #L16-0706.01
#12 #L16-0706.05

PANCLIP ECONO - MTW

Panclip MTW fastener at a lower cost with the same specifications and design as the above Panclip DMG85 coated parts without the additional corrosion resistant coatings. Yellow E zinc plating only, SQ2 drive. Packaged 250 pcs / bag. Not for use in Florida, consult your local building codes before purchase.



PANCLIP ECONO Yellow E Zinc TP-17 Point		
Available Sizes	Qty/Box	Part#
#10-9 x 1" TP-17	5,000	DMIPD1010ZTS
#10-13 x 1-1/4" SP	5,000	DMIPD10125ZTS
#10-9 x 1-1/2" TP-17	2,500	DMIPD1015ZTS

Silver E Zinc Sharp Point PH2/SQ2 (not shown)

Available Sizes	Qty/Box	Part#
#10-12 x 1" Type A	5,000	DMIPD1010WZ

PANCLIP-SD-L LONG LENGTH PANCAKE

#14-13 Panclip fastener designed for clip installation through insulation into wood or light gauge metal up to 16 ga. Also popular for insulated panel, bearing plate or nailboard installation. Available in carbon steel with corrosion resistant 1000 hr DMG85 black coating exceeds ASTM B117 and FBC 1506.6 standards.



PANCLIP SD-L COATED BLACK B=BULK

Available Sizes	Qty/Box	Part#
#14 x 1-1/2"	2,500	DMIPL1415D
#14 x 3"	2,000 B	DMIPL1430D
#14 x 4"	1,000 B	DMIPL1440D
#14 x 5"	1,000 B	DMIPL1450D
#14 x 6"	1,000 B	DMIPL1460D
#14 x 7"	1,000 B	DMIPL1470D
#14 x 8"	500 B	DMIPL1480D

MIAMI-DADE COUNTY LISTED

#L16-0706.03

PAN*CON SS - MASONRY OR WOOD

410 Stainless Steel Panclip fastener designed for installation into predrilled masonry/concrete or wood. DMG85 Silver corrosion resistant coating exceeds ASTM B117 and FBC 1506.6 standards. SQ2 drive. Packaged in 100 piece boxes with a drill bit included. Popular for termination bar, Dura-clad and standing seam attachment to masonry.



Pan*Con 410 SS C Point SQ2 Drive

Available Sizes	Qty/Case	Part#
#14 x 1-1/2" SQ2	1,700	DMIPC41415T
#14 x 2-3/4" SQ2	1,600	DMIPC414275T

Pan*Con 410 SS C Point SQ2 Drive

Special Order Sizes	Qty/Case	Part#
#14 x 4" SQ2	1,200	DMIPC414400T
#14 x 6" SQ2	1,200	DMIPC414600T

STAINLESS STEEL PANCAKE & XLP PANCLIP FASTENERS

PANCLIPSS MTW - 300 STAINLESS STEEL Now available in 304SS or 316SS

#10-9 PanclipSS with low profile pancake head for installing standing seam panels, concealed panel clips, windows or fixtures into wood substrates. Ideal for coastal applications or when a high level of corrosion resistance is required. Corrosion resistance exceeds ASTM B117 and G85 standards. Miami-Dade Listing# L15-0209.10. SQ2 drive with TP-17 with extra low profile head. #10 x 1-1/2" & #12 x 1-1/2" now available in 316SS. Packaged 250 pcs / bag.



304 SS, #2SQ, TP-17 Low Profile L15-0209.10		
Available Sizes	Qty/Box	Part#
#10 x 1" SQ2 TP17	5,000	DMIP31010D
#10 x 1-1/2" SQ2 TP17	2,500	DMIP31015D
#10 x 2" SQ2 TP17	2,000	DMIP31020D

MIAMI-DADE COUNTY
LISTED

#L15-0602.01

Additional Sizes 304 SS, SQ2/PH2 Sharp Point		
Available Sizes	Qty/Box	Part#
#12-11 x 3/4" A SP	5,000	DMIP31234D
#12-11 x 1-1/2" 316	2,500	DMIP3161215D
316 SS #2SQ	Qty/Box	Part#
#10 x 1-1/2" TP17	2,500	DMIP3161015D

PANCLIP-SD-SS-L STAINLESS STEEL

#14-13 Stainless Steel Panclip fastener designed for clip installation through insulation into wood or light gauge metal up to 18 ga. Also popular for insulated panel, bearing plate or nailboard attachment to metal deck. 410 Stainless steel base material with DMG85 Silver corrosion resistant coating exceeds ASTM B117 and FBC 1506.6 standards. SQ2 drive, bulk packaged.



PANCLIP SD-SS-L 410SS DMG85 SILVER

Available Sizes	Qty/Box	Part#
#14 x 1-1/2"	2,500	DMIP41415D
#14 x 3"	1,000	DMIP41430D
#14 x 5"	500	DMIP41450D
#14 x 7"	500	DMIP41470D

PANCLIP XLP - The XLP is for applications that demand an extra low profile head that almost sits flush with the sheet metal that it is securing. Designed primarily for the installation of nail-strip / nail-fin standing seam metal roofing panels. The XLP can be used in many other applications that require an extra low profile installed finish with more holding or bearing surface than a PFH flat head fastener can provide.

PANCLIP XLP MTW NAILSTRIP FASTENER

With extra low profile pancake wafer head for installing nail strip style standing seam panels into wood substrates. XLP MTW comes standard with DMG85 Silver corrosion resistant coating designed to exceed Florida Building Code and Miami-Dade County requirements. The XLP's larger #12-8 diameter provides superior holding strength vs. competing #10 fasteners into wood substrates. The XLP has a sharp point and #2 Square drive for ease of installation. Packaged 250 pcs / bag.



XLP MTW 1000 HR Silver Coated, SQ2, SP

Available Sizes	Qty/Box	Part#
#12-8 x 1"	5,000	DMIPXLP121SD
#12-8 x 1-1/2"	2,500	DMIPXLP1215SD

MIAMI-DADE COUNTY
LISTED

#L16-0706.04

PANCLIP XLP SS STAINLESS STEEL NAILSTRIP FASTENER

The XLP SS is made of passivated 304 Stainless Steel for corrosion protection. The XLP head is made as low profile as possible to provide a pleasing installed appearance. The XLP has a sharp point and #2 Square drive for ease of installation. Packaged 250 pcs / bag.



XLP SS MTW 304 Stainless Steel, SQ2, SP

Available Sizes	Qty/Box	Part#
#12-8 x 1" 304SS	5,000	DMIPXLP121SS
#12-8 x 1-1/2" 304SS	2,500	DMIPXLP1215SS

PAN*CON XLP MASONRY/WOOD SCREW

1/4" (#14) diameter shank with a special XLP head taper and flange designed to better fit predrilled fastening points in popular windows. DMG95 1500 hour tested coating that exceeds Florida fastener corrosion resistance requirements. Conveniently packaged in 100 piece boxes that include 1 drill bit. Expect easier installation and better performance from the #2 square drive and full color coating.



White 014

Size	Qty/Box/Case	Part#
#14 x 3-1/4"	100/box/1000	DMIPCX325WW

Bronze 042

Size	Qty/Box/Case	Part#
#14 x 3-1/4"	100/box/1000	DMIPCX325WB

PANCLIP-SD for applications that require a low profile head with large flat under head load bearing surface. The Panclip head combines a larger clamping surface than a PFH fastener and a lower profile than a HWH or hex head fastener. Designed primarily for the installation of standing seam metal roofing panel clips. The Panclip also has many other applications such as window, door, fixture, liner panel, cladding and siding panel installations. Panclip SD fasteners are for metal substrate applications, Panclip SDL fasteners are for wood or light gauge metal applications.

PANCLIP-SD-L SELF DRILLING MTM **Light gauge applications up to 16 ga**

#14-13 Panclip fastener designed for clip, nailbase and fixture attachment to metal decking from 22 ga to 16 ga in thickness. The Panclip SD-L features the DMG85 black coating that meets FBC and MDC corrosion resistance requirements. Panclip SDL has a #2 square drive and precision drill point. Bulk packaged.



PANCLIP SD-L COATED BLACK B=BULK

Available Sizes	Qty/Box	Part#
#14 x 1-1/2"	2,500	DMIPL1415D
#14 x 3"	2,000 B	DMIPL1430D
#14 x 4"	1,000 B	DMIPL1440D
#14 x 5"	1,000 B	DMIPL1450D
#14 x 6"	1,000 B	DMIPL1460D
#14 x 7"	1,000 B	DMIPL1470D
#14 x 8"	500 B	DMIPL1480D



#L16-0706.03 (DMIPL1415D)

PANCLIP-SD SELF DRILLING MTM **Medium gauge applications .036"-.210"**

Panclip low profile pancake head mated to a self drilling drill point for drill and tap performance into metal and steel substrates. PANCLIP-SD features the 1000hr DMG85 silver coating to meet FBC1506.6 and other corrosion resistance requirements. Packaged in 250 count bags.



PANCLIP SD - DMI SILVER COATED P2/S2

Available Sizes	Qty/Box	Part# 1000hr
#10-16 x 1" SD2	5,000	DMIPD210100C
#10-16 x 1-1/2" SD2	2,500	DMIPD210150C
#12-14 x 1" SD3	5,000	DMIPD312100C
#12-14 x 2" SD3	2,000	DMIPD312200C

SD2 and SD3 point fasteners are designed to self drill and tap into metal substrates from 22ga up to 8 ga steel.

#12-24 PANCAKE HEAD PURLIN FASTENERS

Designed for installation of insulation and membrane stress plates. For attachment to steel purlins from 12 ga to 3/16" in thickness. #12 diameter, 24 threads per inch, #3 square drive. Black Senti XP coating. 3/4" of the length of this fastener is unthreaded and drill bit.



Available Sizes	Qty/Box	Part#
#12 x 3-3/4" SQ#3	1,000	DMI2C4325995B
#12 x 4-3/4" SQ#3	1,000	DMI2C4335995B
#12 x 5-3/4" SQ#3	1,000	DMI2C4345995B
#12 x 6-3/4" SQ#3	500	DMI2C4355995B

Bulk packaged (not bagged)

PANCLIP-SD #14 HD SELF DRILLING MTM **Heavy gauge/purlin applications .12"-.250"**

Panclip low profile pancake head designed for installing panel clips, fixtures and stress plates into steel substrates. PANCLIP-SD HD features a SD4 heavy drill point and square drive #3 for driving stability. Fully coated with DMG85 FBC 1506.6/MDC Coating, packaged 250 pcs / bag.



PANCLIP SD4 HD - DMI SILVER COATED SQ3

Available Sizes	Qty/Box	Part# 1000hr
1/4-20 x 1-1/2"	2,500	DMIP414150TC
1/4-20 x 5"	1,000	DMIP414500TC
1/4-20 x 7"	1,000	DMIP414700TC

SD4 point fasteners are designed to self drill and tap into metal substrates from 12ga up to 1/4" thick steel beams.

PANCLIP-SD-SS-L STAINLESS STEEL MTM **Light gauge applications up to 18 ga**

#14-13 Stainless Steel fastener designed for clip, nailbase and fixture attachment to metal decking from 22ga to 18ga in thickness. The Silver DMG85 coating provides a high level of corrosion & dissimilar metal reaction resistance. Panclip SD-SS-L comes bulk packaged and has a #2 square drive. DMG85 coated 410 Stainless steel exceeds 1506.6 & MDC standards.



PANCLIP SD-SS-L 410SS CTD BULK

Available Sizes	Qty/Box	Part#
#14 x 1-1/2"	2,500	DMIP41415D
#14 x 3"	1,000	DMIP41430D
#14 x 5"	500	DMIP41450D
#14 x 7"	500	DMIP41470D

PANCLIP-SDSS 410 STAINLESS STEEL MTM **Medium gauge applications .036"-.210"**

Panclip low profile pancake head with full 410 stainless steel construction and the DMG85 silver coating for resistance to dissimilar metal reaction and corrosion. Designed for clips and fixtures attachment to medium gauge steel substrates. #2 Square Drive. Packaged 250 pcs / bag.



PANCLIP SD-SS 410SS CTD SQ2 250/BAG

Available Sizes	Qty/Box	Part#
#10-16 x 3/4" SD3	5,000	DMIP41075DC
#10-16 x 1" SD3	5,000	DMIP41010DC
#12-14 x 2" SD3	2,000	DMIP41220DC



#L15-0518.08

WOOD TO WOOD, WOOD TO METAL FASTENERS & RIVETS

ECONO DECKING FASTENERS

Decking screws are used in wood to wood applications such as 1" x 4" to plywood. Other popular uses include installation of tile and shake roofing, exterior fencing and exterior wood deck structures. Econo decking screws have a countersink style bugle head with a #2 square drive, 500hr silver coating and coarse thread for maximum hold into wood substrate.



Stock	Sizes	Qty/Box	Part#
	#8 x 2-1/2"	2,500	DMI4BPCDS08212
	#8 x 3"	2,000	DMI4BPCDS08300

Special Order	Sizes	Qty/Box	Part#
	#10 x 3-1/2"	1,500	DMI4BPCDS10312
	#10 x 4"	1,000	DMI4BPCDS10400
	#10 x 5"	1,000	DMI4BPCDS10500
	#10 x 6"	1,000	DMI4BPCDS10600

Available in full box quantities only.

PREMIUM DECKING FASTENERS (BAGGED)

Decking screws are used in wood to wood applications such as 1" x 4" to plywood. Other popular uses include installation of tile and shake roofing, exterior fencing and exterior wood deck structures. Premium decking screws have a countersink style bugle head with a 6 lobe or a #2 square drive, and a green long-life coating. Packaged 250/bag.

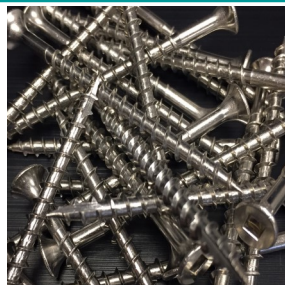


Stock	Sizes	Drive	Qty/Box	Part#
	#9 x 2-1/2"	T25	2,000	DMI4DA9250T25B
	#9 x 3"	S2	1,500	DMI4DA9300S2B

Larger #9 diameter, coarse thread and TP-17 cutpoint for improved holding into wood substrates and to limit splitting of 1" x 4" on installation.

305 STAINLESS STEEL TILE FASTENERS / 305 STAINLESS STEEL DECKING FASTENERS

When you need true corrosion resistance for applications such as clay or concrete tile installation into wood substrates, choose our full 305 stainless steel decking screws. Square flat head #2 Sq drive, #8 x 2" and 2-1/2" feature a TP-17 cutpoint. Available in full box quantities only.



Stock	Sizes	Qty/Box	Part#
	#8 x 2"	3,000	DMI1SS08200
	#8 x 2-1/2"	2,500	DMI1SS08212
	#10 x 2-1/2"	2,000	DMI1SS10212
	#10 x 3"	1,500	DMI1SS10300

Special Order	Sizes	Qty/Box	Part#
	#8 x 1-1/4"	5,000	DMI1SS08114
	#8 x 1-5/8"	4,000	DMI1SS08158
	#10 x 3-1/2"	1,000	DMI1SS10312
	#10 x 4"	1,000	Discontinued

PREMIUM WOOD TO METAL FASTENERS

XLP WTM SD3 with extra low profile pancake wafer head for installing plywood, OSB, MDF and dimensional lumber to metal deck and steel up to 14 ga in thickness. Special white DMG85 full coating for corrosion protection.

WTM SD4 is designed to install dimensional lumber (2x) to steel substrates up to 1/4" thick. Breakaway wings and countersink head allows for a flush surface after installation. Green DMG85 coating is designed for use with pressure treated lumber. 250/bag



XLP WTM to metal up to 6 ga SQ2, SD3 White
Available Sizes Qty/Box Part# (250/bag)
#10-16 x 1-7/8" 2,500 DMIXLP101780S3
Popular for plywood & OSB decking or 1"x4" dimensional lumber to metal deck or purlins.

WTM from 14 ga to 1/4" SQ3, SD4 Green
Available Sizes Qty/Box Part# (250/bag)
#14-20 x 2-3/4" 1,500 DMIXLP122750S4
#14 x 3" Gray ITW 1,000 DMI1096000
Popular for 2"x4" dimensional lumber to C, Z or I purlin applications, 0.07" to 0.25" thick steel.

#43 RIVETS

Blind rivets fasten joints without access to the reverse side of the sheet metal. DMI #43 painted stainless steel rivets are manufactured of corrosion resistant 302 / 304 stainless steel. DMI SS rivets exceed the corrosion resistant standards put forth in Florida Building Code section 1506.6. DMI also offers un-painted #43 rivets in 304 stainless steel, 316 stainless steel and copper/brass. Rivet length is measured to the end of the rivet body. A #43 rivet has a 1/8" diameter body with a 5/16" body length. Its grip range is material from .12" to .187" (1/8" - 3/16").



Mill Finish	Type	Qty/Box	Part#
#43	304SS	6,000	DMI2L1290C
#43	316SS	6,000	DMI43316SS
#43	Copper	6,000	DMI2L4300C



Painted SS	Qty/Box	Part#
#43 304SS	5000	DMI2L1290(color code)

SNAP LOCK STANDING SEAM METAL PANEL CLIPS

DMI SNAPLOCK PANEL CLIPS

Designed for secure fastening of snap lock style standing seam/concealed fastener metal roofing systems. Most styles available in G-90 galvanized or stainless steel. Panel clips can be manufactured to fit panels from most brands and styles of roll forming machines. Please specify make and model of machine when ordering. Most styles are designed with built in fastener relief to help eliminate panel dimpling. Made in the U.S.A. (full box orders only)



1-3/4" Snaplock Ultra Length HD
Fits 1-3/4" Snaplock Panels (1-7/8")
fits Quadro, RF, Newtech 675, D175S
Knudson & ES2000, US 175
18 ga steel or SS, 2 hole, 3-1/2" width

Gauge	Qty/Box	Part#
18G Galv	250	CSN134312G18V
18G SS	250	CSN134312S18V



1-1/2" Snaplock Ultra Length QSL HD
Fits 1-1/2" Snaplock Panels
fits Quadro & E 1500
18 ga steel or SS, 2 hole, 3-1/2" width

Gauge	Qty/Box	Part#
18G Galv	125	CSN112312G18Q
18G SS	250	CSN112312S18Q



1-3/4" Snaplock Econo Clip
Fits 1-3/4" Snaplock Panels (1-7/8")
fits Quadro, Rollformer, Newtech 675,
Knudson, Zimmerman & E US 175
18 ga steel or SS, 3 hole, 2-1/4" width

Gauge	Qty/Box	Part#
18G Galv	400	CSN134214G18
18G SS	400	CSN134214S18



1-1/2" Snaplock Econo QSL
Fits 1-1/2" Snaplock Panels
fits Quadro & E 1500
20 ga steel or SS, 3 hole, 2-1/4" width

Gauge	Qty/Box	Part#
20G Galv	500	CSN112214G20Q
20G SS	500	CSN112214S20Q



1-1/4" Snaplock Econo QSL
Fits Utility Panels, fits Quadro
24 ga steel 2" width

Gauge	Qty/Box	Part#
24G Galv	600	CSN11420G24QSL



1-1/2" Snaplock NT550 HD Clip
Fits Newtech 550
20 ga steel or SS, 2 hole, 3-1/2" width

Gauge	Qty/Box	Part#
20G Galv	300	CSN112916G20NHD
20G SS	300	CSN112916S20NHD



1" Zimmerman SL1000
Fits 1", 1-1/2" Zim Snaplock Panels
24 ga steel or 304SS, 2 hole, 3" width

Gauge	Qty/Box	Part#
24G Galv	500	CSN112916G24Z
24G SS	500	CSN112916S24Z



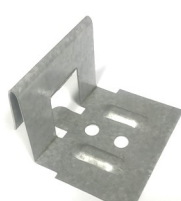
1-1/2" Snaplock Newtech 450 NDF
Fits Modified 450 panel, no fastener relief
dimples and flat tongue.
Fits Newtech 450 and EA1000, D450
24 ga steel or SS, 2 hole, 2" width

Gauge	Qty/Box	Part#
24G Galv	600	CSN11420G24UNDF
24G SS	600	CSN11420S24UNDF



1" Snaplock Rollformer Corp Clip
Fits 1" Snaplock Panels
Fits Rollformer
22 ga steel or 304SS, 2 hole, 2" width

Gauge	Qty/Box	Part#
22G Galv	1000	CSN100200G22RF
22G SS	1000	CSN100200S22RF

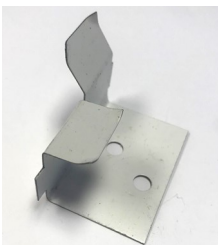


1-1/4" Snaplock Utility 450 LD Clip
Fits " Snaplock Econo Panels
Fits Newtech 450 and EA1000, D450
24 ga steel or SS, 2 hole, 2" width

Gauge	Qty/Box	Part#
24G Galv	600	CSN11420G24U
24G SS	600	CSN11420S24U

DMI BATTEN CLIPS - Batten Clip with dog ears. Pre-folded for easier installation. Popular for radius battens. Made in the U.S.A. (full box orders only)

DMI UNIVERSAL BEARING PLATES - Create a load bearing surface for panel clips overtop of insulation boards. Made in the U.S.A. (full box orders only)



Batten Seam Clip
24 Galv or Stainless, 2 hole, 2" width
11/16" Down leg, Pre-folded, Dog Ears

Size	Gauge	Qty/Box	Part#
1"	24G Galv	1000	CBC1020G24
1"	24G 304SS	1000	CBC1020S24



Universal 4" x 5" slotted

Size	Gauge	Qty/Box	Part#
4" x 5"	20ga G90	250	UBP4620G
4" x 5"	20ga 304SS	250	UBP4520S

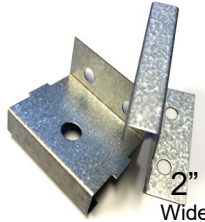
DMI MECHANICAL LOCK PANEL CLIPS

Designed for secure fastening of mechanical lock style standing seam / concealed fastener metal roofing systems. Most styles available in G-90 galvanized, painted steel or stainless steel. Panel clips can be manufactured to fit panels from most brands and styles of roll forming machines. Please specify make and model of machine when ordering. Made in the U.S.A. (full box orders only). Most styles are engineered to give fastener relief, and heights of clips are listed in panel height. 1" tall panel would use 1-1/8" tall clip, 1-1/2" panel would use 1-5/8" clip, etc.



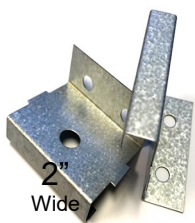
1" Mechanical Lock (1-1/8")
 7/16" Top fits RF, NT, KN, D100SS, EA1301, Galv or SS, 2 hole, 2" width

Gauge	Qty/Box	Part#
26G Galv	1,000	CMF1002716G26
24G SS	1,000	CMF1002716S24
26G SS	1,000	CMF1002716S26



1-1/2" Mechanical Lock (1-5/8")
 7/16" Top fits RF, NT, KN, EA1300, D150SS Galv or Stainless, 2 hole, 2" width

Gauge	Qty/Box	Part#
24G Galv	1,000	CMF1502716G24
24G SS	1,000	CMF1502716S24 S.O.
26G Galv	1,000	CMF1502716G26
26G SS	1,000	CMF1502716S26



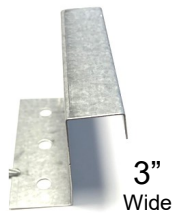
1-1/2" Mechanical Lock NFR(1-1/2")
 7/16" Top fits Z1500, KR12, EA1300 US 1505, D150SS 2 hole, 2" width
 NFR= No built in fastener relief this 1-1/2" panel clip is 1-1/2" in height.

Gauge	Qty/Box	Part#
26G Galv	1,000	CMF1372716G26



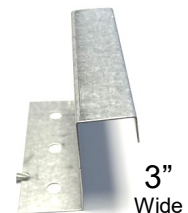
1-1/2" Mechanical Lock HD (1-5/8")
 7/16" Top fits Z1500, EA1300, KR24, RF, US 1505 D150SS, 2or 3 hole, 3" width

Gauge	Qty/Box	Part#
24G Galv	500	CMF1503716G24
24G Galv	500	CMF1503716G24V
24G SS	500	CMF1503716S24
24G SS	500	CMF1503716S24V



2"(2-1/8") Newtech Mechanical Lock
 3/4" Top fits RF, NT Ultraseam, Knudson, E, 3 hole, 3" width.

Gauge	Qty/Box	Part#
24G Galv	600	CMF218334G24
24G SS	300	CMF218334S24 S.O.
22G Galv	600	CMF218334G22
22G SS	300	CMF218334S22 S.O.



2" Quadro Mechanical Lock
 5/8" Top fits Quadro 3 hole, 3" width.

Gauge	Qty/Box	Part#
24G Galv	300	CMF218358G24 S.O.
24G SS	300	CMF218358S24 S.O.
22G Galv	300	CMF218358G22 S.O.
22G SS	300	CMF218358S22 S.O.

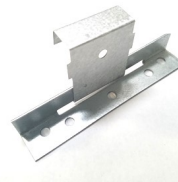
EXPANSION CLIPS FOR MECHANICAL LOCK PANEL CLIPS

Designed to allow for thermal expansion while providing secure fastening of mechanical lock style standing seam / concealed fastener metal roofing systems. The expansion style clips are available in 3 different styles one piece pre-assembled style, a two piece job site assembled and a butterfly style two piece job site assembled (Butterfly style is by special order only). Most styles available in G-90 galvanized.



2" Newtech One Piece Expansion
 3/4" Top fits Newtech Machines 2 hole, 4-3/8" width
 No Assembly Required.
 Galvanized G90 Top 22ga, Base 16G.
 Stainless 304S Top 24ga, Galv Base 16G

Type	Qty/Box	Part#
Galvanized	100	CMEMLG200NT
Stainless	100	CMEMLS200NT



2" Newtech Two Piece Expansion
 3/4" Top fits Newtech Machines 5 hole, 5 base width. This 2 piece clip requires field assembly. Each piece top and bottom sold separately.

Gauge	Qty/Box	Part#
Top 24G	1000	CMT2003416G24
Base 18G	500	CMB500G18



2" Quadro One Piece Expansion
 5/8" Top fits Quadro Machines 2 hole, 4-3/8" width.
 No Assembly Required.
 Galvanized G90 Top 22ga, Base 16G.
 Stainless 304S Top 24ga, Galv Base 16G

Gauge	Qty/Box	Part#
Galvanized	100	CMEMLG200QP
Stainless	100	CMEMLS200QP



1-1/2" Butterfly Style Expansion

2 hole, 4-3/8" width, Assembly Required.
 This product is produced to order, and is available in different gauges and materials. Consult your salesperson for options.

1-1/2" One Piece Expansion
 fits Quadro & Newtech Machines 2 hole, 4-3/8" width, Assembly Required.
 Galvanized G90 Top 22ga, Base 16G.
 Stainless 304S Top 24ga, Galv Base 16G

Gauge	Qty/Box	Part#
Galvanized	100	CMEMLG150
Stainless	100	CMEMLS150








Butyl*Roll PREMIUM BUTYL TAPE SEALANT ROLL

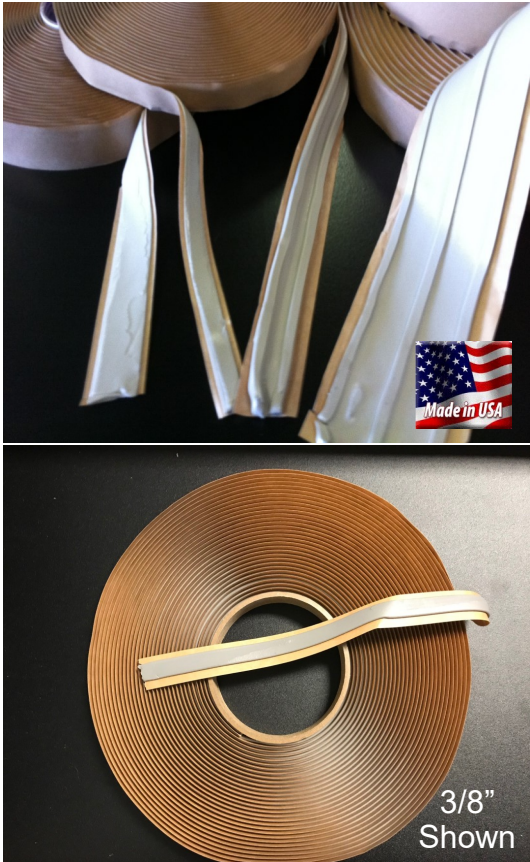
Designed for sealing and preventing the entry of moisture, air and dust into metal lap joints, Butyl*Roll has expanded to serve a wide range of applications. Unlike tube sealants, Butyl*Roll provides a consistent shaped bead, and is quick and easy to apply. Meets or exceeds the following specifications: MIL-C-18959B TIICB, TT-C-1996A TIICB, AAMA 904.3-92 and AAMA 807.3-92 and is Made in the U.S.A.

ADVANTAGES:

A premium quality sealant roll made of 100% solids, highly rubbery, sticky and easy to apply. It shows excellent performance over a wide range of temperatures and conditions. Excellent adhesion to Galvalume and Kynar 500, non-staining and permanently flexible. Butyl*Roll is mold and mildew resistant. Unlike many of the competitors Butyl*Roll is **Approved for use on Polycarbonate Panels.**

Standard stock sizes include

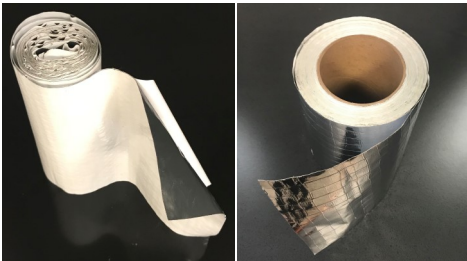
Size	Qty/Box	Part#	
Single bead styles			
3/32 x 3/8" x 45'	40	DMBT3323845	
3/32 x 1/2" x 45'	32	DMBT3321245	
3/32 x 3/4" x 45'	24	DMBT3323445	
3/32 x 1" x 45'	20	DMBT332145	
Double bead styles			
3/16 x 7/8" x 40'	10	DMBT31678D	
Triple bead styles			
3/16 x 7/8" x 25'	14	DMBT31678M	
3/16 x 2-1/2" x 20'	6	DMBT3162122	



Synthetic Butyl Backed Flashing Membrane Roll

PF19 is an extremely aggressive, self-adhering flashing membrane designed to protect windows and doors from moisture penetration. When properly integrated into the wall systems, PF19 will defend against water penetration into the building envelope. PF19 will also perform in many roofing applications such as seam sealing at hip and ridge areas. Not approved or designed for use with polycarbonate panels or materials.

- **Excellent adhesion to OSB, plywood, aluminum, vinyl, weather resistive barriers and underlayment.**
- **UV resistant up to 6months.**
- **Meets AAMA 711-07, Self Seals around nails and screws.**
- **Double split back release paper for easy install.**
- **Made in the U.S.A.**



Now with your choice of facing:
White woven vinyl facer or
silver Metallized facer with Scrim.

Facer / Size	Qty/Box	Part#
White 6" x 75'	8	DMI8Q18W675W
Silver 6" x 75'	8	DMI8Q18W675S

ACRYLIC BUTYL CAULK, ACRYL-R™ 5430 NON SKINNING / NON SAG SSR SEALANT

SM5430 Acryl-R® is a white non-skinning, non-drying sealant based on a unique elastomer that provides a non-stringy consistency and excellent resistance to severe environmental conditions of heat, cold and moisture. **(DO NOT EXPOSE TO SUNLIGHT)**. It has excellent webbing characteristics and adhesion to GALVALUME®, GALVALUME PLUS®, ACRYLUME®, ZINCALUME®, KYNAR 500®, siliconized and polyvinyl fluoride painted metals.

TYPICAL USES:

SM5430 is designed for factory sealing the female lip of a concealed standing seam roof (SSR) rib, as well as wall panels and polyurethane foam panel joints. Excellent for sealing between dissimilar metals to prevent electrolysis. Excellent for use as an acoustical sealant. Excellent for sealing hidden details in window and door installations; bedding of mounting fins and flashing and sealing end dams and receptor pans.

30 (10.1oz) tubes/cartridges per carton. Color:White Part # DMSM5430WC
50 gallon drum with polyliner. (4 drums/pallet) Color:White Part # DMSM5430W50



PIPE FLASHINGS FOR METAL ROOFING

DMI E.P.D.M. PIPE FLASHINGS FOR METAL ROOFING - UNIVERSAL ROUND BASE

Used to waterproof roof penetrations in metal roofing panels. Pliable E.P.D.M. with pitch relief. Our flashings feature an aluminum fastening ring with grooved sealant holding base. Light grey or black color E.P.D.M. rubber construction with UPC approval and 20 year warranty. Application temperature range up to constant 212 deg F. These parts are 100% North American Made and qualify for the Buy American Plan. No hose clamp required for proper installation.

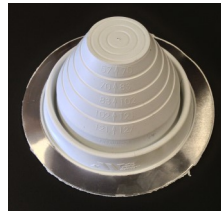


Size	Fits Pipes	Base	Qty/Box	Part#
#1	1/4" - 2"	4-1/2"	15	DML1GR
#2	1 1/4" - 3"	6"	15	DML2GR
#3	1/4" - 4"	8"	15	DML3GR
#4	3" - 6"	10"	10	DML4GR
#5	4" - 7"	11"	10	DML5GR
#6	5" - 9"	12"	10	DML6GR
#7	6" - 11"	14"	10	DML7GR
#8	7" - 13"	17"	5	DML8GR
#9	10" - 18"	25-3/8"	5	DML9GR
#10	13" to 26"	34" square	5	DML10GS

GR part # for Grey, Substitute BR in part# for Black.

DMI HIGH TEMPERATURE SILICONE PIPE FLASHINGS FOR METAL ROOFING - ROUND BASE

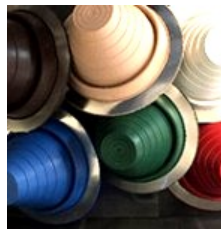
Now available in grey silicone with a round base to handle temperature spikes of up to 500 deg F. Used to waterproof roof penetrations in extreme temperature metal roof panel applications. High quality silicone construction with UPC approval and 20 year warranty. Temperature range up to constant 450 deg F. These parts are 100% North American Made and qualify for the B.A.P. No hose clamp required.



Size	Fits Pipes	Base	Qty/Box	Part#
#1	1/4" - 2"	4-1/2"	15	DML1HTG
#2	1 1/4" - 3"	6"	15	DML2HTG
#3	1/4" - 4"	8"	15	DML3HTG
#4	3" - 6"	10"	10	DML4HTG
#5	4" - 7"	11"	10	DML5HTG
#6	5" - 9"	12"	10	DML6HTG
#7	6" - 11"	14"	10	DML7HTG
#8	7" - 13"	17"	5	DML8HTG
#9	10" - 18"	25-3/8"	5	DML9HTG
#10	13" to 26"	34" square	5 Red	DML10HT

DMI ROUND COLOR MATCH PIPE FLASHINGS

11 colors to complement metal roofing panel color closer than our standard grey pipe flashings. This is not a painted pipe flashing, the 20 year E.P.D.M. is manufactured in color. #3 round is standard stock, all other sizes and styles are special order. Non standard colors and sizes can be custom manufactured with a minimum of 300 pipe flashings. Buy American Plan, designed for applications up to 212 deg F.



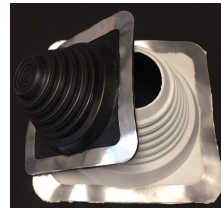
Size	Qty/Box	Available Colors
#3	15	Black, Bright Red, Brown, Copper, Dark Blue, Dark Gray, Dark Green, Light Blue, Tan, Terracotta, and White

#4 through #9 also available in Black or Dark Gray

Other sizes of colors are special order and may require a 300 piece minimum order for production.

DMI E.P.D.M. PIPE FLASHINGS FOR METAL ROOFING - SQUARE BASE PYRAMID STYLE

Used to waterproof roof penetrations in metal roofing panels. Features aluminum fastening flange with grooved sealant holding base. Light grey or black color E.P.D.M. rubber construction with UPC approval and 20 year warranty. Application temperature range up to constant 212 deg F. Buy American Plan of 50% American Made Content / 100% North American Made. This product is square but is suggested to be installed as a diamond.



Size	Fits Pipes	Base	Qty/Box	Part#
Mini	1/8" - 3/4"	2"	30	DML0GS
#3	1/4" - 4"	8"	15	DML3GS
#4	3" - 6"	10"	10	DML4GS
#5	4" - 7"	11"	10	DML5GS
#6	5" - 9"	12"	10	DML6GS
#8	7" - 13"	17"	5	DML8GS
#10	13" to 26"	34" square	5	DML10GS

GS part # for Grey, Substitute BS in part# for Black.

DMI ROUND RETROFIT FLASHINGS - (Zipperboot)

Designed to waterproof electrical conduit, masts, service poles and collared pipe penetrations through metal roofing panels. Stainless steel fastening teeth interlock with the rubber for fastening at the split. E.P.D.M. rubber construction with UPC approval and 20 year warranty. Standard gray to be used on mill finish metal roofing. #802 are available for special order in black EPDM or a white high temperature silicone.



Size	Fits	Base	Qty/Box	Part#GR
*#1	1/4"- 2-3/4"	6-3/10"	10	DM801G
*#2	2"- 7-1/4"	10-3/4"	10	DM802G
*#3	3-1/4"- 10"	14-1/2"	5	DM803G

Size	Fits	Base	Qty/Box	Part#WT
#802	2"- 7-1/4"	10-3/4"	5	DM802WT

#802 White High Temp is not American Made or BAP, and is made of white silicone <500 deg F.

DMI SQUARE BASE RETROFIT FLASHINGS

Designed to waterproof electrical conduit, masts, service poles and collared pipe penetrations through metal roofing panels. Includes corrosion resistant band and rivets for fastening. Accurate side markings make it easy to cut for a specific size. Light gray, square base E.P.D.M. rubber construction with UPC approval and 20 year warranty. Standard color is gray, however these parts are available by special order in black E.P.D.M. or red high temp silicone. Buy American Plan /100% N. American Made.



Size	Fits	Base	Qty/Box	Part#
#101	1/2"- 4"	8"	5	DML101G
#201	4"- 9-1/4"	14"	5	DML201G
#301	9-1/4"- 16-1/4"		5	DML301G

Size	Fits	Base	Qty/Box	Part#HT
#102	1/2"- 4"	8"	5	DML102H
#202	4"- 9-1/4"	14"	5	DML202H
#302	9-1/4"- 16-1/4"		5	DML302H

SPECIALTY PIPE FLASHINGS FOR METAL ROOFING

35YR ICC - ES CODE COMPLIANT PREMIUM PIPE FLASHINGS FOR METAL ROOFING

Code compliant, ICC- ES listed premium pipe flashing for pipe penetrations through metal roofing. Manufactured in Square base black with black fastening flange. Similar to our square based E.P.D.M. flashings in application but made from a premium material featuring a 35year warranty. 100% North American Made, BAP plan. Installed as a diamond.



Size	Fits Pipes	Base	Qty/Box	Part#
#2	1-1/4" - 3"	6"	15	DMLICCSQ201B
#3	1/4" - 4"	8"	15	DMLICCSQ301B
#4	3" - 6"	10"	10	DMLICCSQ401B
#5	4" - 7"	11"	10	DMLICCSQ501B
#8	7" - 13"	17"	5	DMLICCSQ801B

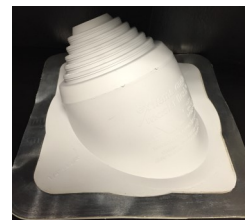
MULTI-FLASH SQUARE VENT , SQUARE PIPE BOOT

Fits standard square pipes and vents from 3/4" to 5" and retrofit applications for 1-1/2" up to 4". High quality black E.P.D.M. with 20 year warranty. Adaptable base and no hassle stainless steel gripper to secure in retrofit applications. Square base. Packaged 10 pcs/box Part# DMLMFSQ101BA



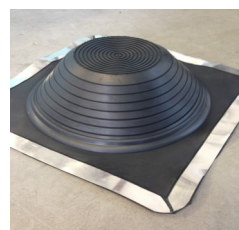
EAF ANGLE FLASHINGS

Designed for use on extreme pitch metal roofs. Built in 40 degree angle to make installation on extreme pitch roofs quick and easy. Manufactured in a diamond base, in Black or Gray E.P.D.M. Fits pipe sizes 1/4" - 6" Black EPDM Part # EA101BA 10/box Gray EPDM Part # EA101GA 10/box



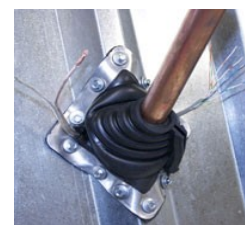
FIX-A-FLASH MASTERFLASH

Solution for smaller pipes with an oversized hole in your metal panel, and solution for overflash application of old pipe flashings. E.P.D.M. Black 20yr warranty rubber and adaptable base. Fits 0" to 15" pipes with a 19-1/2" base. Buy American Plan. 5 pcs per box Part# FF851BC



MULTI-PORT MASTER FLASH™

Easy to use 4 in 1 flashing, up to 4 cables or wires per flashing. Stainless steel gripper to secure in retrofit applications. Accommodates four 1/4" lines and 1 pipe 1/4" - 2-3/4". B.A.P. Black E.P.D.M. 10/box DMLMP101BA Red high temp 10/box DMLMP102RA



CAP FLASHINGS MASTERCAP & RIBCAP

Designed to seal up-slope profile ends. Popular applications such as: HVAC curb penetrations, skylight curb penetrations and chimney flashing points.

The MASTERCAP1 measures 3" high x inner Depth of 2" and Base width of 4-1/2" will accommodate many standing seam metal roofing profiles from 1-1/4" to 3" and popular commercial roofing panels with an 1-1/4" to 2" tall rib such as MR12 / R Panel / PBR Panel. (Old Part#DSLMLC101BA/GA, DMLMC051/MC101NG) *** New Part number and packaging, Packaged 20 pcs per box Gray part# MC101BA

THE RIBCAP is designed specifically for 3/4" rib profile ends. Packaged 10 pcs per box Part# DMRIBCAP

Size: 3/4" overall height x inner wall width 2" inner depth of 2-3/4". Gray E.P.D.M.



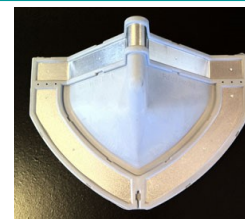
LIGHTNING ROD PIPE FLASHING

Designed to weatherproof lightning rod or wire penetrations through metal roofing panels or ridge caps. Easy to use, with the perfect low profile design. Also used in some solar stand applications on metal roofing. Packaged 40 pieces per box. Imported. Fits 0" to 1-3/8" Part# DM1RRG



END CAP FLASHING

Constructed of gray E.P.D.M. with a 20 year warranty. Applications include skylight, cupola and ridge ends. Flexible, corrosion resistant aluminum base conforms large standing seam and trapezoidal metal roof panels. Imported. 10 pcs per box Part# DM1DC1



DEK-STRIP™ EXPANDABLE EDGED FLASHING

STRETCHES TO ANY SHAPE, SEALS, & STAYS Wraps around almost any profile, paintable after installation, great for large, round pipes. Serpentine edges stretch up to 25% for added length. Handles vibration and expansion, TPE has a continuous service temperature range of -58°F to +240°F. Imported.

APPLICATIONS INCLUDE:

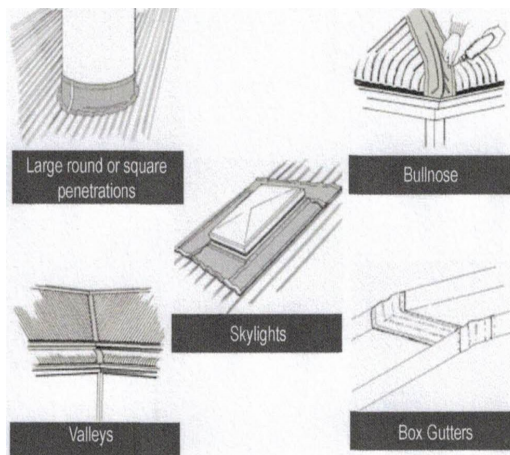
Large square and round ducts, chimneys, gutter detail, parapet flashings, skylights, expansion joints, stepped roof, dissimilar roof profiles, transition wall, gambrel roof and flash between dissimilar materials.

AVAILABLE SIZES:

7"x75" PN# DMDS775G

9"x75" PN# DMDS975G

12"x75" PN# DMDS1275G,



UNIVERSAL VENTILATION FOR METAL ROOFING

RAZORBACK FBC CODE APPROVED RIDGEVENT

Long life universal ridge vent rolls for metal roofing panels. Quick and easy installation directly to ridge cap with dual hot melt adhesive for peel and stick installation. Wind driven rain resistance tested and Florida Building Code Approved # FL4640 R4

Advantages include:

- Stock one product to match many roof panel configurations
- Designed for any pitch from 2/12 to 20/12
- Pure polyurethane foam with vinyl coating, UV stabilized and fire retardant
- Designed to withstand 100 MPH wind driven rain
- 25 year limited warranty
- Does not scratch painted metal surfaces
- Dust free material with convenient packaging and easy installation
- Low profile installed appearance
- Air flow - net free area 17 sq in per lineal foot
- Passed TAS 100A - Florida Building Code Approved # FL4640 R4

Please allow for 25% minimum compression, sizing chart found to the right >



Available Sizes
1-1/2" x 2" x 10'
1-3/4" x 2" x 10'

Qty/Box Part#
10 DMIRB1122010
10 DMIRB1342010

Available Sizes
1-1/2" x 2" x 10'
1-3/4" x 2" x 10'

Suggested for Panels
with 1/2" to 1" Tall Ribs
with 3/4" to 1-1/4" Tall Ribs

RAZORBACK RIDGEVENT PLUS

Long life universal ridge vent rolls for metal roofing panels. Quick and easy installation directly to ridge cap with full width positioning adhesive tape strip. Long term heat resistant coatings and flame retardants for extended product life. Made in the U.S.A. with all American Made components.

Advantages include:

- Inexpensive, quick and easy to install
- 40 year limited warranty, with fire retardant longlife coatings
- Designed for many roof panel configurations and pitches from 2/12 to 20/12
- Low profile attractive installed appearance
- Does not scratch painted metal surfaces
- Designed to withstand 110 MPH wind driven rain



Available Sizes
1-1/2" x 2" x 10'
1-3/4" x 2" x 10'
2" x 2" x 10'
2.12" x 2" x 10'

Qty/Box Part#
10 DMIRB1122010P
10 DMIRB1342010P
10 DMIRB2002010P
10 DMIRB2122010P

Available Sizes
1-1/2" x 2" x 10'
1-3/4" x 2" x 10'
2" x 2" x 10'
2.12" x 2" x 10'

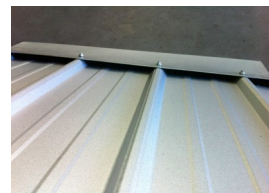
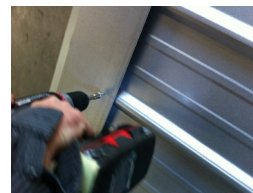
Suggested for Panels
with 1/2" to 1" Tall Ribs
with 3/4" to 1-1/4" Tall Ribs
with 1" to 1-1/2" Tall Ribs
with 1" to 1-1/2" Tall Ribs

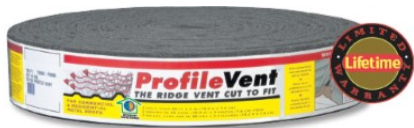
Allow for a minimum of 25% compression.

New full width
adhesive designed
for higher adhesion
in colder climates.



Both Razorback RidgeVent products are
quick and easy to install.





PROFILE SPECIFIC VENTILATION FOR METAL ROOFING

PROFILEVENT™ ROLLS

ProfileVent is a single layer ridge vent on a roll or now in limited profiles also available as a 3' stick. It is strong, durable, modified polyester, non-woven, non-wicking, fiber based matting designed for specific metal roofing profiles.

ProfileVent provides 17 sq in per lineal ft net free area ventilation. As with other attic ventilation systems, ProfileVent must be installed with soffit vents to meet HVI recommendations.

Miami-Dade product control approval # 12-0724.3 (3/4" rib)

Rolls: Sold in 2 roll (3" wide x 50' long) shrink wrapped packages. When planning please plan for installation on both sides of the ridge.

Example 1: You have 50' running feet of ridge cap to vent you need 100 lft of Profile Vent purchase one package.

Example 2: You have 75' running feet of ridge cap to vent you need 150 lft of Profile Vent purchase 2 packages.

Stock Roll Profiles

	Qty/Pkg	Part#
5V Crimp	2 roll/ 100lft	DMI2T1282PV
R/PBR	2 roll/ 100lft	DMI2T0679PV
3/4" RIB	2 roll/ 100lft	DMI2T0900PV
1" NailStripSS 16"OC	2 roll/ 100lft	DMI2T1564PV
1" NailStripSS 12"OC	2 roll/ 100lft	DMI2T99908V1

Stock 3' Strip Profiles

	Qty/Ctn	Part#
R/PBR	16 pcs	DMI2PV1357916
3/4" RIB	24 pcs	DMI2PV1300476

Special Order Roll Profiles Include:

Available Sizes	Qty/Pkg	Part#
2.67 CORR x 7/8"	100lft	DMI2T0120PV
1-1/2" SL SS 16" OC	100lft	DMI2T1639PV

Part#

	Qty/Pkg	Part#
5V Crimp	2 roll/ 100lft	DMI2T1282PV
R/PBR	2 roll/ 100lft	DMI2T0679PV
3/4" RIB	2 roll/ 100lft	DMI2T0900PV
1" NailStripSS 16"OC	2 roll/ 100lft	DMI2T1564PV
1" NailStripSS 12"OC	2 roll/ 100lft	DMI2T99908V1

Part#

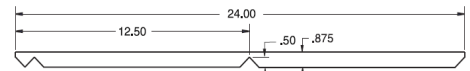
	Qty/Ctn	Part#
R/PBR	16 pcs	DMI2PV1357916
3/4" RIB	24 pcs	DMI2PV1300476

Part#

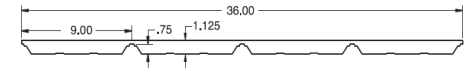
	Qty/Pkg	Part#
2.67 CORR x 7/8"	100lft	DMI2T0120PV
1-1/2" SL SS 16" OC	100lft	DMI2T1639PV



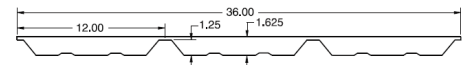
5V CRIMP



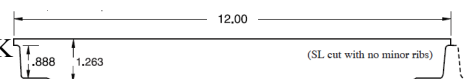
3/4" RIB



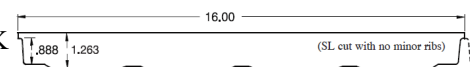
R/PBR



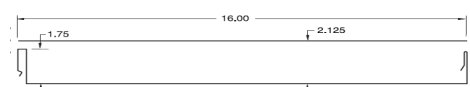
1" SNAPLOCK



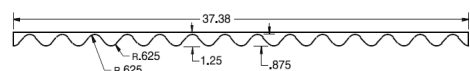
1" SNAPLOCK



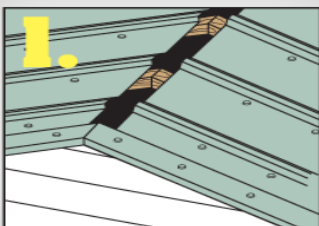
1-3/4"



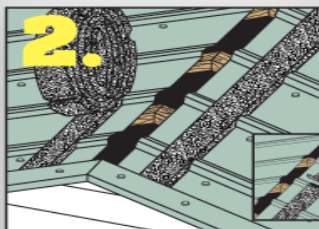
2.67" COR-



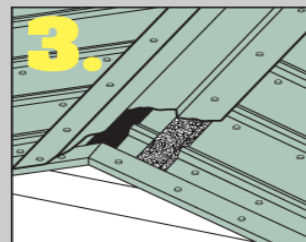
Standard installation procedures.



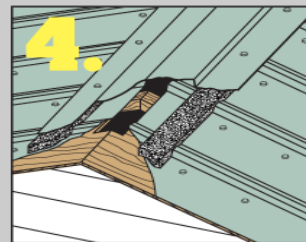
1. Allow a 2" opening at ridge for ventilation. ProfileVent is rolled out along the ridge, gable to gable. Install ProfileVent about 1/2" to 1" up-slope from the edge of the ridge cap. The positioning adhesive on most profiles will hold ProfileVent in position for easy installation.



2. ProfileVent can be cut with scissors or utility knife. When splicing ProfileVent, make the splice at the center top of the high rib and use caulk or sealant along the splice (see inset).



3. Screw through ridge cap and top of each anchor clip. Blind Rivets can be used to anchor the ridge cap when using architectural or standing seam panels.



4. New or Re-Roof on Purlin or Wood Deck Construction: Use a 2" opening at the ridge to provide ventilation. On new or re-roof wood deck construction, cut a 2" slot at the ridge (1" each side, start cut 6" from gable ends). On purlin construction position panels to leave a 2" opening.

PROFILEVENT™ ANCHOR CLIPS

ProfileVent anchor clip is designed to be used with ProfileVent in high wind areas and on panels with major ribs 16" on center or greater. Eliminates cutting of Zee Bar for installation of ridge cap. Painted black for corrosion protection.

AClip sizes should match your rib height

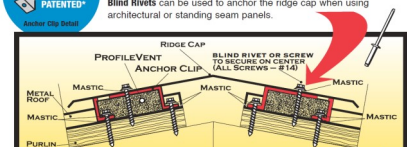
Available Sizes	Qty/Box	Part#
3/4" tall	100	DMI2PV80002
1" tall	100	DMI2PV80004
1-1/4" tall	100	DMI2PV80006
1-1/2" tall	100	DMI2PV80008
1-3/4" tall	100	DMI2PV80010

Ships from Warehouse 5 only.



OPTIONAL RIDGE CAP ANCHOR CLIP

We recommend using our anchor clip to hold down the ridge cap in high wind areas and on panels with major ribs 16" on center or greater. Blind Rivets can be used to anchor the ridge cap when using architectural or standing seam panels.



DMI FOAM CLOSURE ROLLS & POLICIES

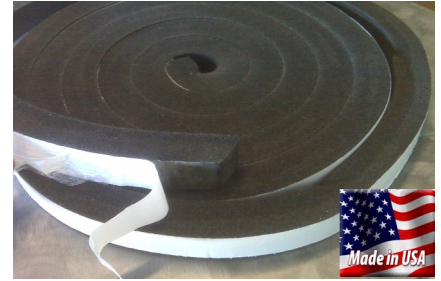
DIRECT*SEAL LONG LIFE UNIVERSAL CLOSURE ROLLS

Universal closure rolls designed to seal gaps in metal roofing, window and door installations. When compressed, Direct*Seal will become a water, pest, wind, and dust barrier in valley, hip and other panel to panel or panel to trim applications. Direct*Seal can also be used to close in gaps around windows and doors to help increase the energy efficiency of your building. Direct*Seal comes fully expanded in a single wrapped roll and is compressed at time of application.

Application Guide: Compression of the product is required to achieve the following:
25% Compression required for dust & sound protection, pest resistance and thermal insulation.
50% Compression required for wind, air and rain protection up to 20 psf.

Advantages:

- UV protected foam with no asphalt content (non-streaking, non-staining)
- Designed for any pitch from 2/12 to 20/12
- Will not scratch panel finishes
- Easy to apply with a full width peel back adhesive strip



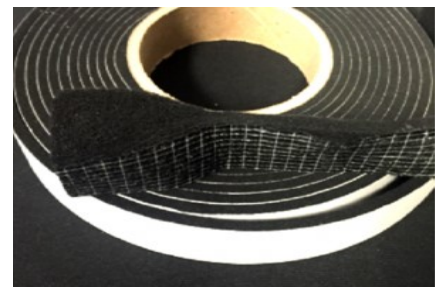
Available Sizes	Qty/Box	Part#
1" x 1" x 20'	20	DDS101020
1-1/2" x 1-1/2" X 20'	20	DDS151520
2" x 2" x 10'	10	DDS202010

Color : Gray

BG1 EXPANDING UNIVERSAL CLOSURE ROLLS

Precompressed, self-expanding polyurethane foam with acrylate dispersion impregnation. Used for sealing joints and seams in metal panels, gaps around door and window frames and expansion joints in buildings/construction. Ships in a compressed roll, expands to fill gaps between mechanically fixed panels and trim. Typical expansion occurs in 8-10 hours. Made in Europe.

Application Guide: Compression of the product is required to achieve the following:
20% Compression required for dust & sound protection, and thermal insulation
50% Compression required for wind, air, dust & sound resistance, and insulation
70% Compression required for rain protection up to 6.25 psf
80% Compression required for rain protection up to 21.57 psf



Available Sizes	Qty/Box	Part#
(1/4) 1" x 1" x 20'	12	DMI21305091
(3/8") 1" x 1-1/2" X 15'	12	DMI21305092

Full carton sales only. Color: Black

EMSEAL AST Hi-Acrylic UNIVERSAL CLOSURE ROLLS

Self-adhering tape seal made from resilient, open-cell polyurethane foam impregnated with a water-based acrylic-modified asphalt emulsion. High compression levels are required for water tightness in water run-off applications; lower compression can be used, for example, for snow seal at roof ridges. Used to seal out dust, air, wind-driven snow and moisture through joint details in metal buildings and roofs. Do not use on Polycarbonate or PVC panels. Refer to DMI website for compression requirements or ask your salesperson for a product flier.

Available Sizes	Qty/Box	Part#
(1/4) 1" x 1" x 19.58'	26	MTLBTAST14
(3/8") 1" x 1-1/2" X 13'	24	MTLBTAST38 SO

Full carton sales only. SO = Special order



Return Policy:

All DMI distributors have the right to set their own policies with their customers including but not limited to: return, re-stock, pricing and terms of sale.

DMI policy to our distributors is that all sales are considered final (**ALL SALES FINAL**). If DMI management will accept a return, it must be a standard stock product returned in original un-opened packaging, with a 25% non-negotiable restocking fee. All credits for qualifying returns will be given in the form of an account credit against new purchases. **No cash refunds available.**

2018 Sales Policies and Conditions:

Direct Metals, Inc. sells materials directly to our registered distributor network. We do not offer direct sales or new accounts to homeowners, contractors or installers; however we can assist you in finding the right product and your closest distributor.

If your company would like to apply to become a new registered DMI distributor, here are guidelines to see if you may qualify to join our distributor network.

Registered dealers must maintain a minimum stock of DMI products.

Registered dealers must purchase an average minimum of \$ 5,000.00 / month.

Registered dealers must offer products for resale and not intercompany use.

Registered dealers must maintain and provide a copy of a Tax exempt resellers license.

Registered dealers must have a strong financial background and be able to have credit approved by DMI.

Dealer applicants should be a minimum of 25 miles from any existing DMI dealer.

If your company does not meet all of the above criteria, DMI can assist you in creating a strong relationship with one of our very competitive distributors.

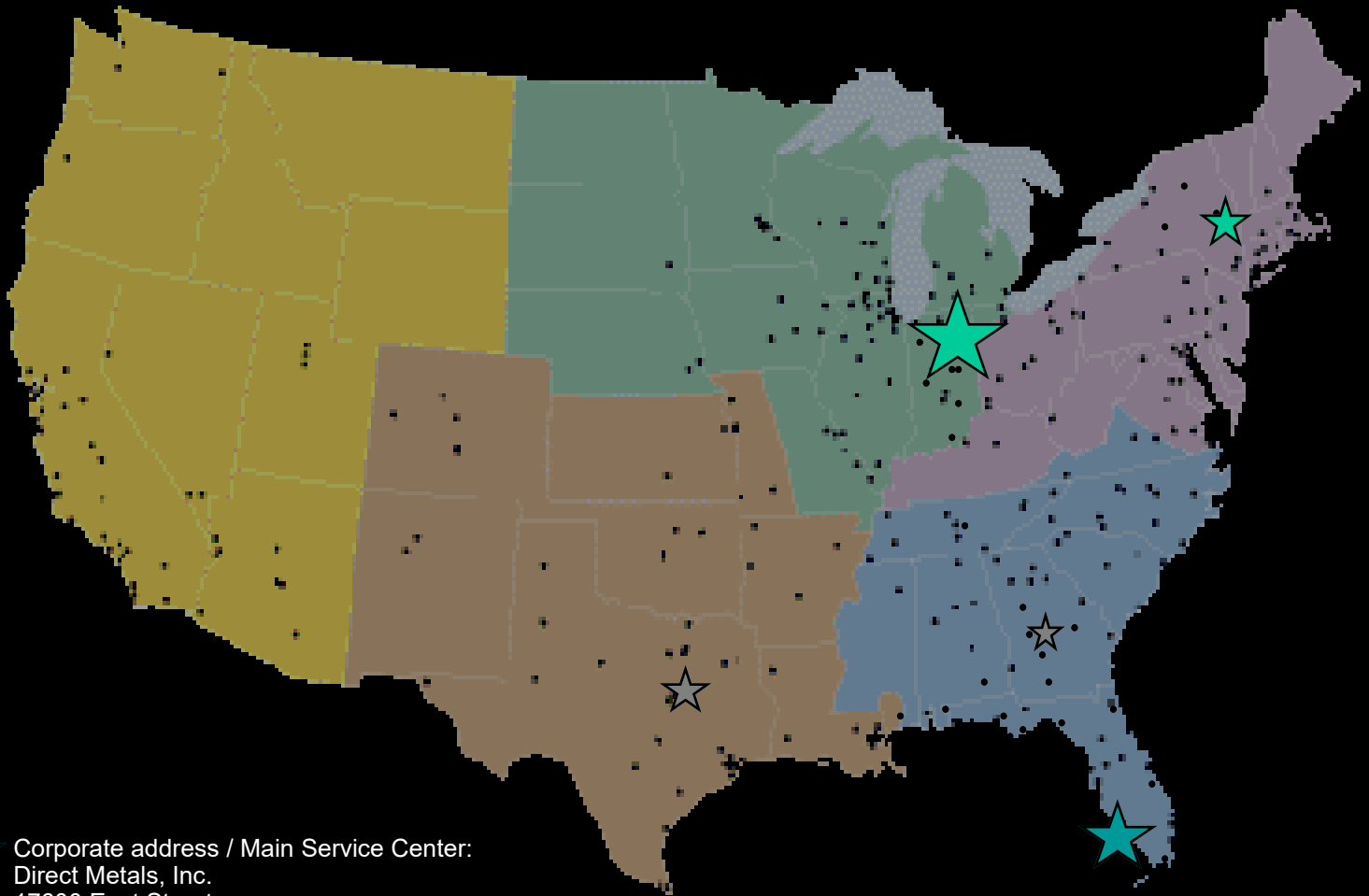


www.directmetalsinc.com



Distributor order entry or product inquiries:
Toll Free Phone: 855-800-8878
Toll Free Fax: 855-800-8877
orders@directmetalsinc.com
Website: www.directmetalsinc.com

We are proud to have over 1300 distributors across the United States of America. These distributors are serviced through our warehousing locations strategically placed to offer fast service and low shipping cost on our quality products.



★ Corporate address / Main Service Center:
Direct Metals, Inc.
17600 East Street
N. Ft Myers, FL 33917
Phone: 239-599-8527
Fax: 239-599-8545
Manager Email: andrew@directmetalsinc.com
Order tracking : tracking@directmetalsinc.com
Order entry : orders@directmetalsinc.com

★ Midwest Service Center:
Direct Metals of Indiana
1800 Jim Neu Drive, Suite 3
Plymouth, IN 46563
Phone: 574-935-3644
Fax: 574-935-3643
Order tracking : tracking@directmetalsinc.com
Order entry : orders@directmetalsinc.com

★ Future Service Center Coming Soon

Your Direct Metals, Inc. distributor is:



www.directmetalsinc.com