

DMI Color Pipe Flashings



11 colors of #3 pipe flashings are now available to complement metal panel colors.

- Used to waterproof pipe penetrations in metal roof panels
- 20 Year Warranty
- Universal and adjustable
- Made to fit multiple roof pitches
- Colored all the way through eliminating the need to paint
- In expensive upgrade to your metal roofing package



Specifications

#3 Color Pipe Flashing

Base diameter 8"

Suggested for pipes from 1/4" to 4" in diameter.

Material:

EPDM rubber with aluminum ring.

Application Temperature Range:

-65 deg F to + 212 deg F

Warranty: 20 Years,

UPC IAMPO and & CSA Listed

This product contains materials manufactured in the U.S.A. and Mexico and qualifies for the B.A.P .

Selection

<u>Sizes</u>	<u>Qty/Box</u>	<u>Part#</u>
#3 Black	15	DMLRD301BE
#3 Bright Red	15	DMLRD301BR
#3 Brown	15	DMLRD301BN
#3 Copper	15	DMLRD301CP
#3 Dark Gray/Charcoal	15	DMLRD301DGR
#3 Dark Green	15	DMLRD301DG
#3 Dark Green	15	DMLRD301DG
#3 Light Blue	15	DMLRD301LB
#3 Tan	15	DMLRD301TAN
#3 Terracotta	15	DMLRD301TC
#3 White	15	DMLRD301TC

To find a distributor call 855-800-8878 or visit www.directmetalsinc.com

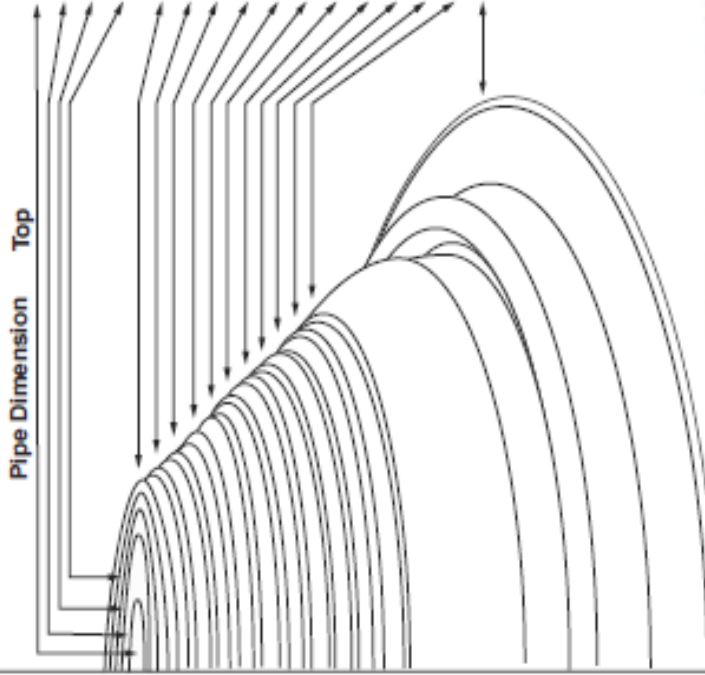
INSTALLATION INSTRUCTIONS

Size and Trimming Chart (Inches)

#1	#2	#3	#4	#5	#6	#7	#8	#9
.25		0.125						
.63		0.63						
.57		1.1						
.92 - 1.0		1.65						
1.25 - 1.50	1.75 - 2	2.25 - 2.75	3 - 3.75	4.25 - 5	5 - 5.50	6 - 6.50	7 - 8	10
1.75 - 2	2.37 - 2.5	2.75 - 3.25	3.75 - 4.50	5 - 5.75	5.50 - 6	6.50 - 7	8 - 8.50	11
2 - 2.37	2.75 - 3	3.25 - 4	4.50 - 5.25	5.75 - 6.50	6 - 6.50	7 - 7.50	8.50 - 9	12
		4 - 4.75	5.25 - 5.75	6.50 - 7	6.50 - 7	7.50 - 8	9 - 9.50	13
		4.75 - 5	5.75 - 6.25	7 - 7.50	7.50 - 8	8 - 8.50	9.50 - 10	14
					7.50 - 8	8.50 - 9	10 - 10.50	15
					8 - 8.50	9 - 9.50	10.50 - 11.50	16
					8.50 - 9	9.50 - 10	11.50 - 12	17
						10 - 10.50	12 - 13	18
						10.50 - 11		19
4.75	6.25	7.75	9.25	10.50	13	14.50	16.50	25.25

Base Dimension

- * Find pipe size in table and trim Universal Master Flash® as shown on outline at left.
- * Use one size larger Universal Master Flash® on steep roofs or deep corrugation.
- * Numbers 1 and 3 have closed tops.



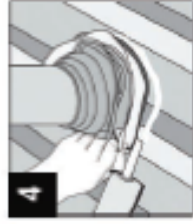
1 Choose pipe opening and trim



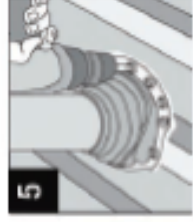
2 Slide over pipe



3 Form to roof profile



4 Apply sealant



5 Fasten to complete



To purchase please contact a Direct Metals, Inc registered distributor.