

Newtech 450, 1-1/2 Snaplock Clip



Designed for the installation of Newtech 450 Snaplock metal roofing panels to wood or steel substrates. Designed for use with specified Panclip low profile pancake head fasteners.

Features:

- Manufactured to consistent specifications
- Built-in fastener relief to help relieve dimpling of panel.
- Available in G90 galvanized steel to meet Florida Building code requirements from Section 1506.7 of the FBC Code.

Specifications

Made to fit Newtech 450 and
1-1/2" Snaplock Utility Panels

Size description:

Height: 1-1/4"

Width: 2"

With 3/4" downleg, dog ears and
offset tongue.

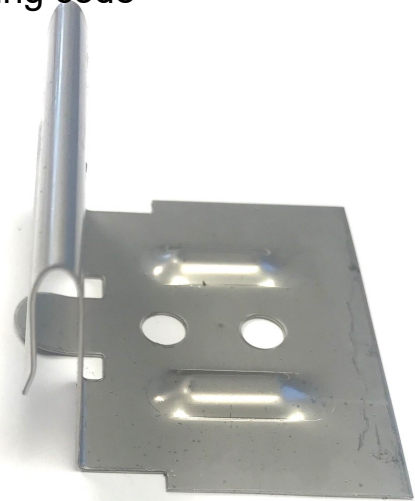
24 ga Galvanized metal or 304
Stainless Steel material

Country of Origin:

Made in the U.S.A.

Compliance

Any and all ratings for this panel clip are applied for and tested by the panel manufacturer. Please contact the panel manufacturer for any compliance or approval numbers. DMI does not test applications or field conditions for this product as it may vary per application, and must be tested as an assembly.



Selection

<u>Type</u>	<u>Qty/Box</u>	<u>Part#</u>
Galvanized	600	CSN11420G24U
304 Stainless	600	CSN11420S24U

Box Labeling: May vary

This product is private labeled for many
different panel manufacturers.

Installation

Please see panel manufacturers approved installation
guides for installation instructions.

MSDS Based on current requirements of the occupational safety and health administration code, 26CFR, part 1910120 (Hazard communication), it has been determined that the product is considered "articles". A material safety data sheet is not required for items meeting the code definition of "article". Installation guide available upon request.

To find a distributor call 855-800-8878 or visit www.directmetalsinc.com