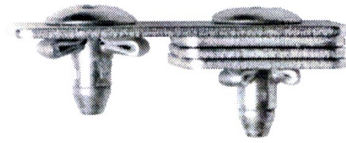


# BULB-TITE® Rivets



BULB-TITE rivets were first developed to solve application requirements in the Pre-Engineered Metal Building industry. Since that time, the BULB-TITE product line has been expanded to meet application requirements in a wide range of industries. The BULB-TITE rivet body folds into three separate legs forming a large blind-side head. This large bearing head evenly distributes the BULB-TITE's clamp force in soft, thin or brittle materials while providing high pull-through resistance. The wide grip range enables a single rivet to work in a greater variation of thicknesses. Special installation tool nosepieces are required for proper installation performance. See chart on page 13.

<p><b>RV6603 &amp; RV6604 – Dome Head (Protruding Crown)</b></p>	<p><b>RV6605 – Large Flange Head (Protruding Crown)</b></p>
<p><b>RV6606 – Dome Head (Recessed Crown)</b></p>	<p><b>RV6601 – Countersunk Head (82°)</b></p>
<p><b>A - Head Diameter   B - Body Height   D - Body Diameter   F - Blind Side Protrusion   L - Rivet Body Length</b></p>	

## Aluminum Rivet/Aluminum Mandrel

Head Style	Rivet Dia Nom.	SFS intec Code	SFS intec Part Number	Grip Range (Inches)	Hole Size (Inches) Drill No.	Dimensions (Inches)					Typ. Strength (lbs.)	
						D Max.	B Max.	A	L Max.	F Ref.	Shear	Tensile
Large Flange Prot. Crown	9/32"	RV6605-9-6	1194724	.042-.375	.308-.327	.304	.210	.720-.765	1.110	1.325	1500	1100
		RV6605-9-6W	1194725	.042-.375	5/16				1.110	1.325		
		RV6605-9-10	1194726	.250-.625	1.360				1.575			
		RV6605-9-10W	1194727	.250-.625	1.360				1.575			
		RV6605-9-12	1194728	.375-.750	1.485				1.700			
		RV6605-9-12W	1194730	.375-.750	1.485				1.700			

**RV66 0 4 - 6 - 8 W**

BULB-TITE \_\_\_\_\_  
 Rivet Material \_\_\_\_\_  
 0 - Aluminum

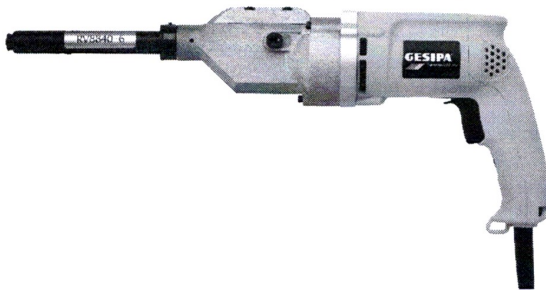
Washer for Weather Resistance  
 Maximum Grip (in 1/16")  
 Nominal Diameter (in 1/32")  
 Head Style  
 1 - Countersunk  
 3 & 4 - Dome (Protruding Crown)  
 5 - Large Flange  
 6 - Low Profile (Recessed Crown)

To Find a DMI distributor call 855-800-8878 or email [info@directmetalsinc.com](mailto:info@directmetalsinc.com)

## GESIPA® Installation Tools For BULB-TITE® Rivets

### RV 74G

*ELECTRIC (AC) POWERED BULB-TITE TOOL*



**WORK CAPACITY:** 5/32", 3/16", 1/4" & 9/32" BULB-TITE rivets.\*

\*Requires appropriate sized RV8840 series BULB-TITE pulling head

**WEIGHT:** 6.5 lbs. w/pulling head attached

**LENGTH:** 14" w/o pulling head, 18" w/pulling head attached

**TRACTION POWER:** 3,000 lbs.

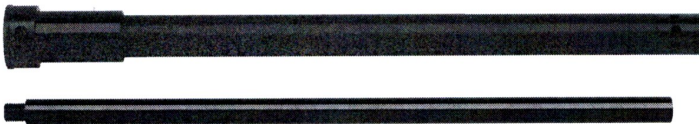
**WORKING STROKE:** Continuous reciprocating .375" per cycle

**FEATURES:**

- The RV74G is the newest refinement in GESIPA Electric Powered BULB-TITE installation tool that is designed for Metal Building Construction applications. This tool is suited to sidewall panel applications. Attaching the optional 74-EXT extension adapts the RV74G for installing BULB-TITES in roofing applications from a standing position.

### RV 74-EXT

*PULLING HEAD EXTENSION UNIT*



**WEIGHT:** 1.5 lbs.

**LENGTH:** 12 13/16" (Extends tool by 12")

**FEATURES:**

- Attachment of the 74-EXT extension unit adapts the RV74G tool for roofing applications. This ergonomic feature enables BULB-TITE rivet installation while standing.

### RV 74G with 74-EXT & RV8840 attached

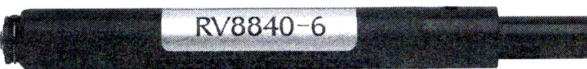
**WEIGHT:** 8 lbs.

**LENGTH:** 30"



### BULB-TITE Pulling Heads

*RV8840-X (-5,6,8,9 DIAMETER BULB-TITE RIVETS)*



Specify the BULB-TITE rivet diameter when ordering

**WEIGHT:** 0.5 lbs.

**LENGTH:** 6 1/16"

**FEATURES:**

- RV8840 series pulling heads are designed for use with 6603, 6604, and 6605 series BULB-TITE rivets which feature multi-grip type mandrels
- These heads are equipped with jaws and tips for specific diameter BULB-TITE rivets. The special BULB-TITE crown-swaging nose tip pivots to align the tip onto the BULB-TITE rivet's head crown for improved bore sealing of installed rivets.