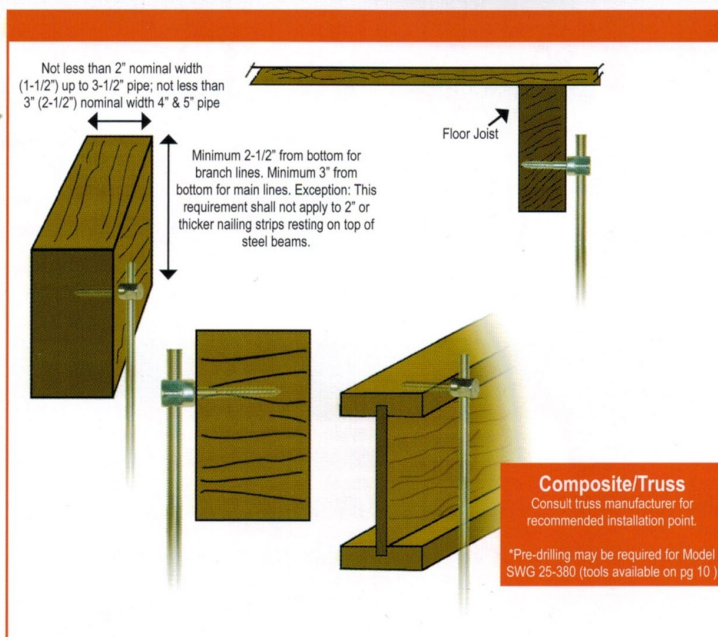
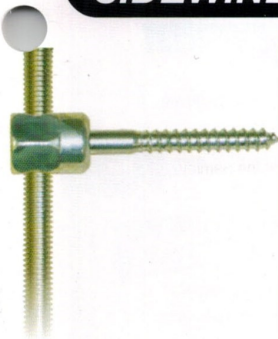


SIDEWINDERS® for Wood *Installs HORIZONTALLY into the side of wood structures easily and quickly!*



Product Features

- No pre-drilling required.
- Quick to install using the Sammy Nut Driver with an 18V cordless drill/driver.
- Saves time from traditional methods.
- Reduces installation cost.
- Made in the U.S.A.





Composite/Truss

Consult truss manufacturer for recommended installation point.

*Pre-drilling may be required for Model SWG 25-380 (tools available on pg 10)



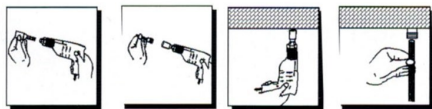
#14 SW Red
Nut Driver
Part # 8114910

Approvals	Rod Size	Part Number	Model	Screw Descriptions	Ultimate Pullout (lbs)	UL Test Load (lbs)	Box Qty	Case Qty
	1/4"	8018957	SWG 100	1/4 x 1"	622 (Fir)		25	125
	1/4"	8019957	SWG 200	1/4 x 2"	1725 (Fir)		25	125
	3/8"	8020957	SWG 10	1/4 x 1"	622 (Fir)	300	25	125
	3/8"	8021957	SWG 20	1/4 x 2"	1725 (Fir)	1050	25	125
	3/8"	8073925	SWG 20-SS	1/4 x 2"	1725 (Fir)	850	25	125
	3/8"	8022925	SWG 25-380	3/8 x 2-1/2"	2249 (Fir)	1500	25	125
	3/8"	8023925	SWG 30	1/4 x 3"	1884 (Fir)		25	125

INSTALLATION STEPS - VERTICAL INTO WOOD & STEEL:

1. Insert the appropriate nut driver into a 3/8" or 1/2" portable drill.
2. Insert the SAMMYS into the #14 (black) nut driver (p/n 8113910). Drill should be in a vertical position.
3. Push the face of the nut driver tight to the member. When the nut driver spins freely on the SAMMYS, stop drill and remove.
4. The SAMMYS is now ready to receive 1/4", 3/8", 1/2" or metric all thread rod or bolt stock. (The 1/2" requires the #14SW red nut driver)

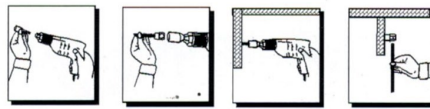
Note: When installing DSTR, follow the above instructions, then add retainer nut and torque to 20 foot lbs. for maximum pullout in purlin steel.



INSTALLATION STEPS - HORIZONTAL INTO WOOD & STEEL:

1. Insert the appropriate nut driver into a 3/8" or 1/2" portable drill.
2. Insert the SAMMYS into the #14SW (red) nut driver (p/n 8114910). With drill unit in a horizontal position and at a right angle to the structural member, begin installation.
3. When the nut driver spins free on the SAMMYS, stop the drill and remove.
4. The unit is now ready to receive 1/4", 3/8" or metric all thread rod or bolt stock.

Note: When installing SWDR, follow the above instructions, then add retainer nut and torque to 20 foot lbs. for maximum pullout in purlin steel.

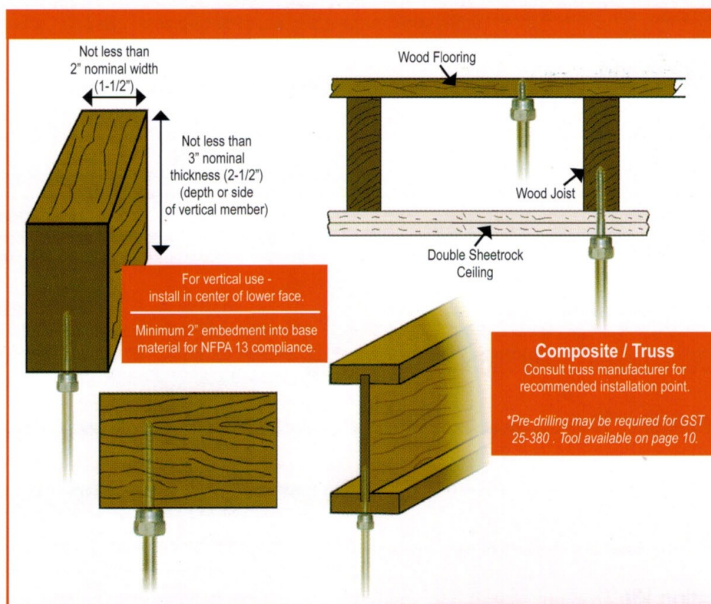


SPECIAL NUT DRIVER SYSTEM: The nut drivers were designed with a unique spin-off feature which provides a fast and safe installation each time. When the face of the driver comes into contact with the material you are installing into, continue drilling until nut driver spins free. Installation is then complete. Warranty requires the use of the appropriate nut driver for installations.

VERTICAL MOUNT

SAMMYS®

SAMMYS® for Wood Installs VERTICALLY into the bottom of wood structures easily and quickly!



Product Features

- No pre-drilling required.
- Quick to install using the Sammy Nut Driver with an 18V cordless drill/driver.
- Saves time from traditional methods.
- Reduces installation cost.
- Made in the U.S.A.

Approvals	Rod Size	Part Number	Model	Screw Descriptions	Ultimate Pullout (lbs)	UL Test Load (lbs)	FM Test Load (lbs)	Box Qty	Case Qty
	1/4"	8002957	GST 100	1/4 x 1"	210 (7/16" OSB) 670 (3/4" Ply)			25	125
	1/4"	8003957	GST 200	1/4 x 2"	1760 (Fir)			25	125
	1/4"	8004957	GST 300	1/4 x 3"	2060 (Fir)			25	125
	3/8"	8006957	GST .75	1/4 x 3/4"	564 (3/4" Ply)			25	125
UL	3/8"	8007957	GST 10	1/4 x 1"	210 (7/16" OSB) 670 (3/4" Ply)	300		25	125
UL FM	3/8"	8008957	GST 20	1/4 x 2"	1760 (Fir)	850	1475	25	125
UL FM	3/8"	8068925	GST 20-SS	1/4 x 2"	1760 (Fir)	850		25	125
UL FM	3/8"	8009925	GST 25-380	3/8 x 2-1/2"	2113 (Fir)	1500		25	125
UL FM	3/8"	8010957	GST 30	1/4 x 3"	2060 (Fir)	1500	1475	25	125
	3/8"	8069925	GST 30-SS	1/4 x 3"	2060 (Fir)			25	125
	3/8"	8011925	GST 40	1/4 x 4"	2180 (Fir)			25	125
	3/8"	8012925	GST 60	1/4 x 6"	2230 (Fir)			25	125
	1/2"	8013925	GST 2	1/4 x 2"	1760 (Fir)			25	125
	1/2"	8014925	GST 2.5-380	3/8 x 2-1/2"	2113 (Fir)			25	125
	1/2"	8015925	GST 3	1/4 x 3"	2275 (Fir)			25	125
	1/2"	8016925	GST 4	1/4 x 4"	2180 (Fir)			25	125
	1/2"	8017925	GST 6	1/4 x 6"	2230 (Fir)			25	125



#14 Black Nut Driver
Part # 8113910

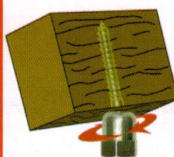


#14 SW Red Nut Driver
Part # 8114910

SAMMY Swivel Head® for Wood Installs VERTICALLY and swivels up to 17° in wood structure

Product Features

- Eliminates distortion of threaded rod.
- Accommodates up to 3 1/2" x 12 pitch roof.
- Allows 17° deflection from vertical.
- Saves time from traditional methods.
- Reduces installation cost.
- Made in the U.S.A.



Approvals	Rod Size	Part Number	Model	Screw Descriptions	Ultimate Pullout (lbs)	UL Test Load (lbs)	FM Test Load (lbs)	Box Qty	Case Qty
UL FM	3/8"	8139957	SH-GST 20	1/4 x 2"	1257 (Fir)	1050	1475	25	125
UL FM	3/8"	8141957	SH-GST 30	1/4 x 3"	1720 (Fir)	1500	1475	25	125

SPECIAL NUT DRIVER SYSTEM: The nut drivers were designed with a unique spin-off feature which provides a fast and safe installation each time. When the face of the driver comes into contact with the material you are installing into, continue drilling until nut driver spins free. Installation is then complete. Warranty requires the use of the appropriate nut driver for installations.



#14 Black Nut Driver
Part # 8113910

